

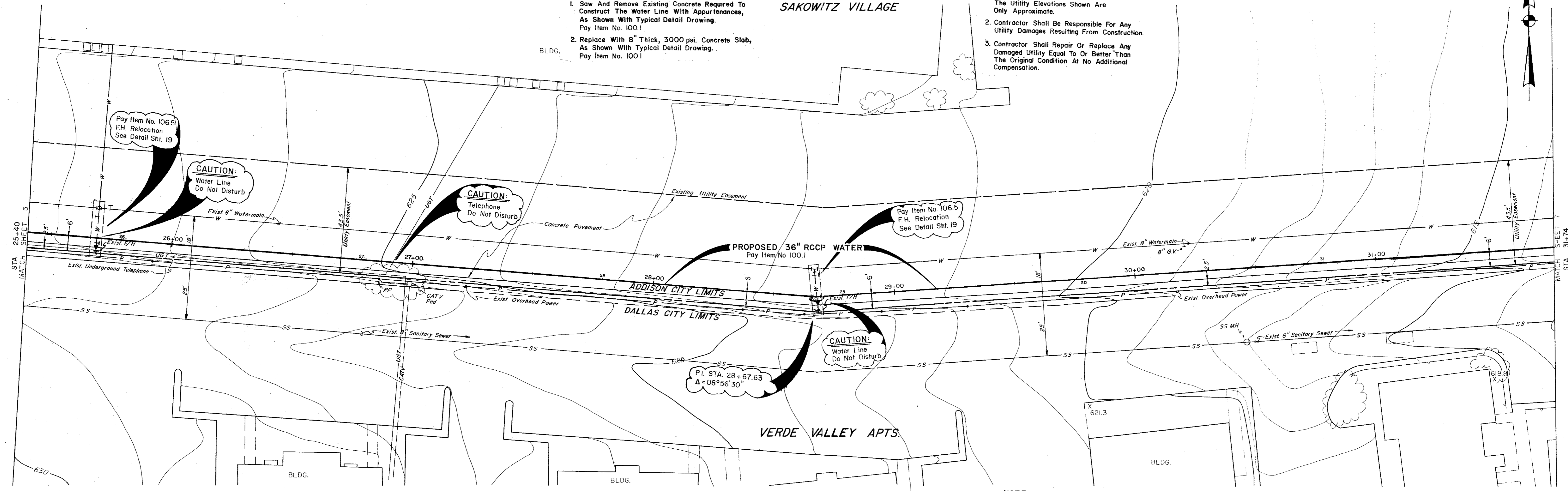
CONSTRUCTION NOTES:
(STA. 25+40 to 31+74 See Typ. Detail Sht.)

- The following notes correspond by station number with the appropriate typical detail drawing.
1. Saw And Remove Existing Concrete Required To Construct The Water Line With Appurtenances, As Shown With Typical Detail Drawing. Pay Item No. 100.1
 2. Replace With 8" Thick, 3000 psi. Concrete Slab, As Shown With Typical Detail Drawing. Pay Item No. 100.1

NOTE:

1. Contractor Shall Determine The Exact Location And Depth Of The Underground Utilities Shown Prior To Construction By Contacting The Utility Companies. The Utility Elevations Shown Are Only Approximate.
2. Contractor Shall Be Responsible For Any Utility Damages Resulting From Construction.
3. Contractor Shall Repair Or Replace Any Damaged Utility Equal To Or Better Than The Original Condition At No Additional Compensation.

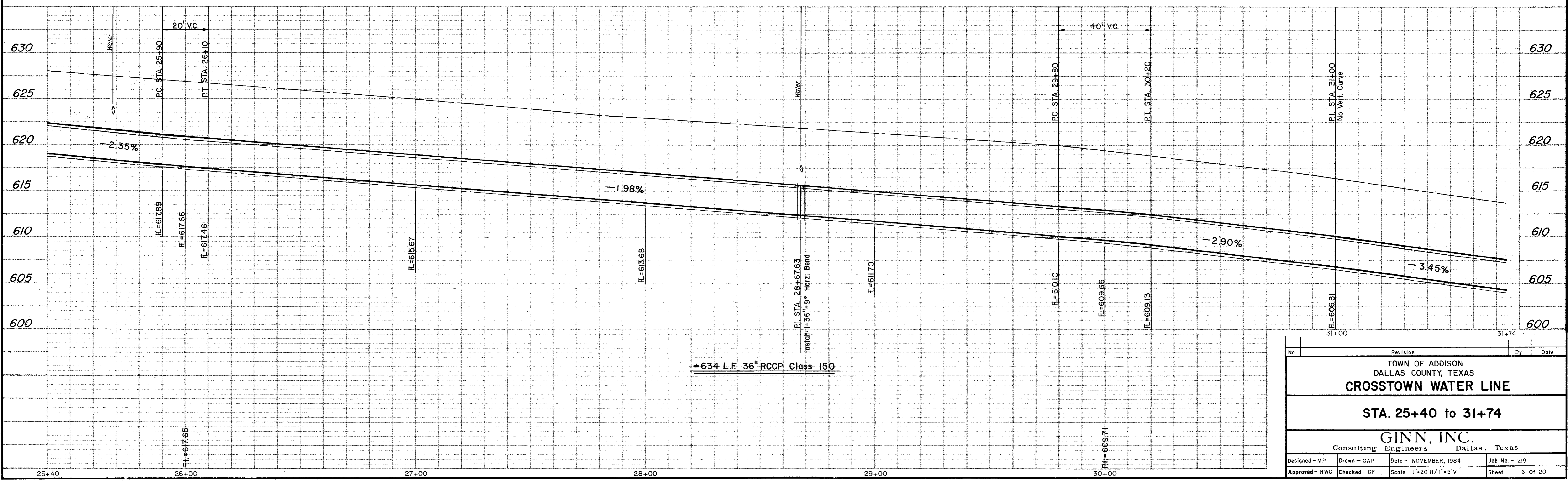
SAKOWITZ VILLAGE



NOTE:

Block All Bends, Tees And Plugs As Required By Appurtenances. See Typical Detail Sheet.

B.M. "□" Cut On Sidewalk *78' Lt. Of Sta. 27+82± At Sakowitz Village. Elev. 624.381



±634 L.F. 36" RCCP Class 150

No.	Revision	By	Date
TOWN OF ADDISON DALLAS COUNTY, TEXAS CROSTOWN WATER LINE STA. 25+40 to 31+74 GINN, INC. Consulting Engineers Dallas, Texas			
Designed - MP	Drawn - GAP	Date - NOVEMBER, 1984	Job No. - 219
Approved - HWG	Checked - GF	Scale - 1"=20'H/1"=5'V	Sheet 6 Of 20