

CONSTRUCTION NOTES:
(STA. 37+02 to 40+22 See Typ. Detail Sht.)

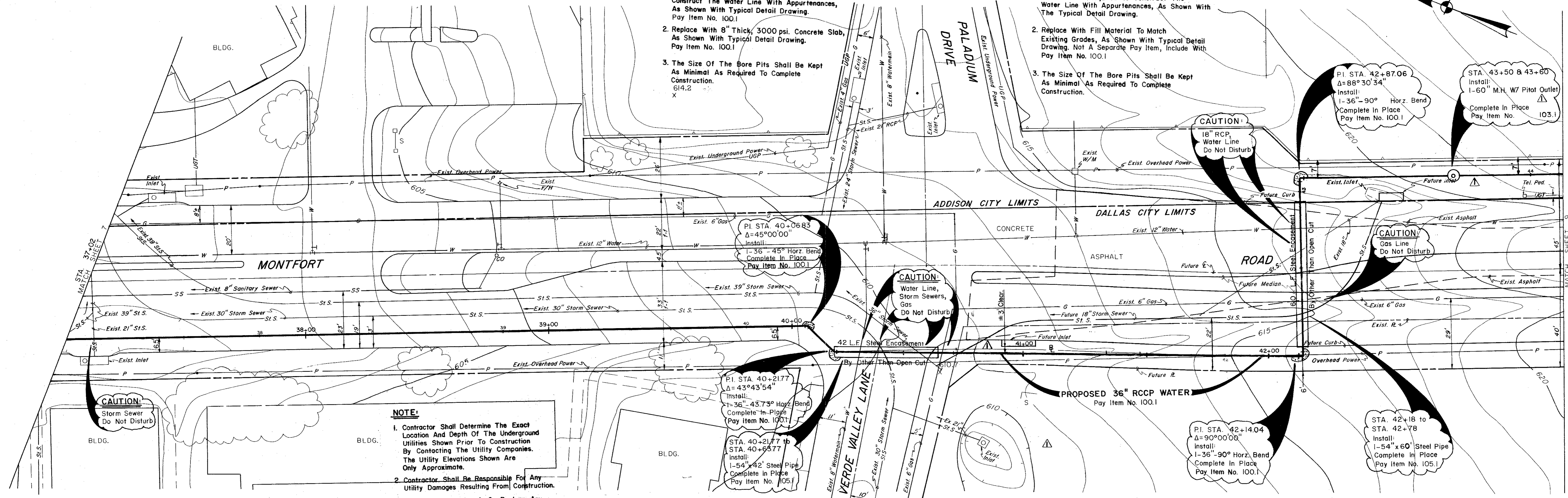
The following notes correspond by station number with the appropriate typical detail drawing.

1. Saw And Remove Existing Concrete Required To Construct The Water Line With Appurtenances, As Shown With Typical Detail Drawing. Pay Item No. 100.1
2. Replace With 8" Thick, 3000 psi. Concrete Slab, As Shown With Typical Detail Drawing. Pay Item No. 100.1
3. The Size Of The Bore Pits Shall Be Kept As Minimal As Required To Complete Construction. 614.2

CONSTRUCTION NOTES:
(STA. 40+64 to 43+95 See Typ. Detail Sht.)

The following notes correspond by station number with the appropriate typical detail drawing.

1. Excavate As Required To Construct The Water Line With Appurtenances, As Shown With The Typical Detail Drawing.
2. Replace With Fill Material To Match Existing Grades, As Shown With Typical Detail Drawing. Not A Separate Pay Item, Include With Pay Item No. 100.1
3. The Size Of The Bore Pits Shall Be Kept As Minimal As Required To Complete Construction.



NOTE:

1. Contractor Shall Determine The Exact Location And Depth Of The Underground Utilities Shown Prior To Construction By Contacting The Utility Companies. The Utility Elevations Shown Are Only Approximate.
2. Contractor Shall Be Responsible For Any Utility Damages Resulting From Construction.
3. Contractor Shall Repair Or Replace Any Damaged Utility Equal To Or Better Than The Original Condition At No Additional Compensation.

NOTE:

Block All Bends, Tees And Plugs As Required By Appurtenances. See Typical Detail Sheet.

STATION EQUATION:

Water Line Sta. 42+87.06 =
Base Line Sta. 43+07.15

B.M. "C" Cut On Top Of Curb Sta. 38+82 ±
On Montfort Rd. Elev. 604.714

GENERAL NOTES:

- Plug Upper End Of Casing W/ 6" Min. 2000 psi. Concrete. Plug Lower End W/ 6" Min. Clay.
- Voids Between Earth Or Rock And Encasement Pipe Shall Be Filled With 1:7 Grout Including 5% to 40% Air Entrained By Pressure Injection.
- Carrier Pipe Shall Be Supported On A Continuous 6" Thick, 2000 psi. Concrete Cradle, In CMP Encasement Pipe Only. There Shall Be A Minimum Of Two Hold Down Jacks Per Joint.

CASING PIPE NOTES: (Minimum Requirements)

1. Smooth Steel Shall Be 54" I.D. 0.500 Inch Thick, Minimum (H-20 Live Load), Minimum Yield Strength 35,000 psi., Coated With Intal. Bituminous Coating, Inside And Out.
2. OPTIONAL: Casing Pipe Shall Be 54" I.D. ASTM C-76, Class IV, Reinforced Concrete Pipe, Or Corrugated Metal Pipe, 54" I.D., 3" x 1" Corr., (2 ga. (0.109").

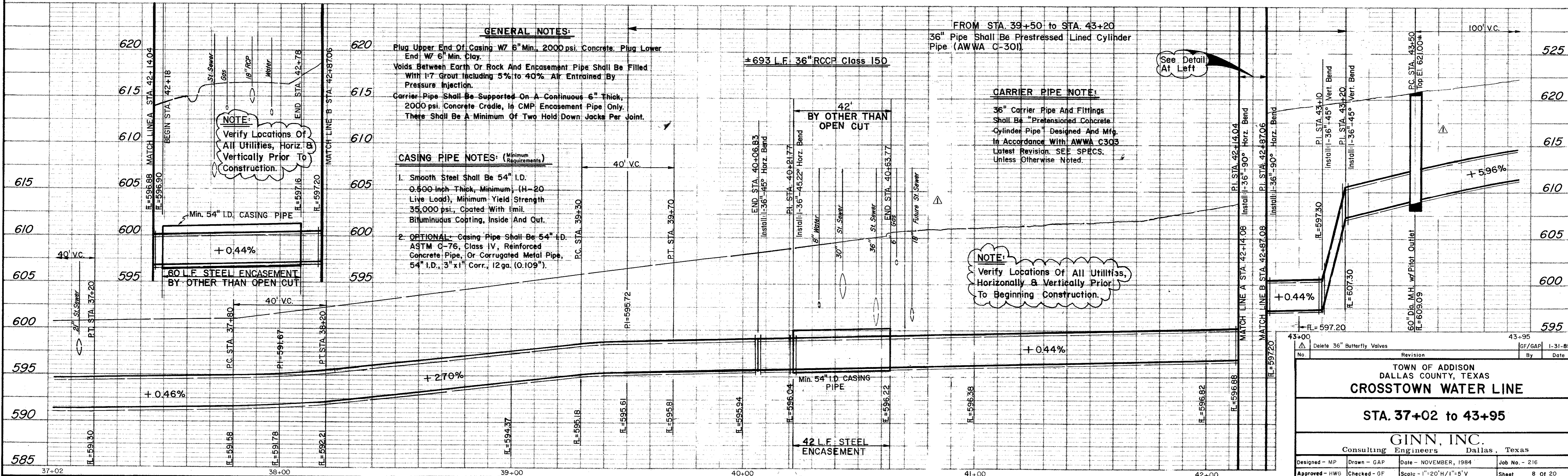
FROM STA. 39+50 to STA. 43+20
36" Pipe Shall Be Prestressed Lined Cylinder Pipe (AWWA C-301)

CARRIER PIPE NOTE:

36" Carrier Pipe And Fittings Shall Be "Prestressed Concrete Cylinder Pipe" Designed And Mfg. In Accordance With AWWA C303 Latest Revision. SEE SPECS. Unless Otherwise Noted.

NOTE:

Verify Locations Of All Utilities, Horizontally & Vertically Prior To Beginning Construction.



Delete 36" Butterfly Valves		Revision	By	Date
TOWN OF ADDISON DALLAS COUNTY, TEXAS CROSTOWN WATER LINE STA. 37+02 to 43+95 GINN, INC. Consulting Engineers Dallas, Texas Designed - MP Drawn - GAP Date - NOVEMBER, 1984 Job No. - 216 Approved - HWG Checked - GF Scale - 1"=20'H/1"=5'V Sheet 8 of 20				