

CONSTRUCTION NOTES:
(STA. 43+95 to 48+91 See Typ. Detail Sht.)

The following notes correspond by station number with the appropriate typical detail drawing.

1. Excavate As Required To Construct The Water Line With Appurtenances, As Shown With The Typical Detail Drawing.
2. Replace With Fill Material To Match Existing Grades, As Shown With Typical Detail Drawing. Not A Separate Pay Item, Include With Pay Item No. 100.1

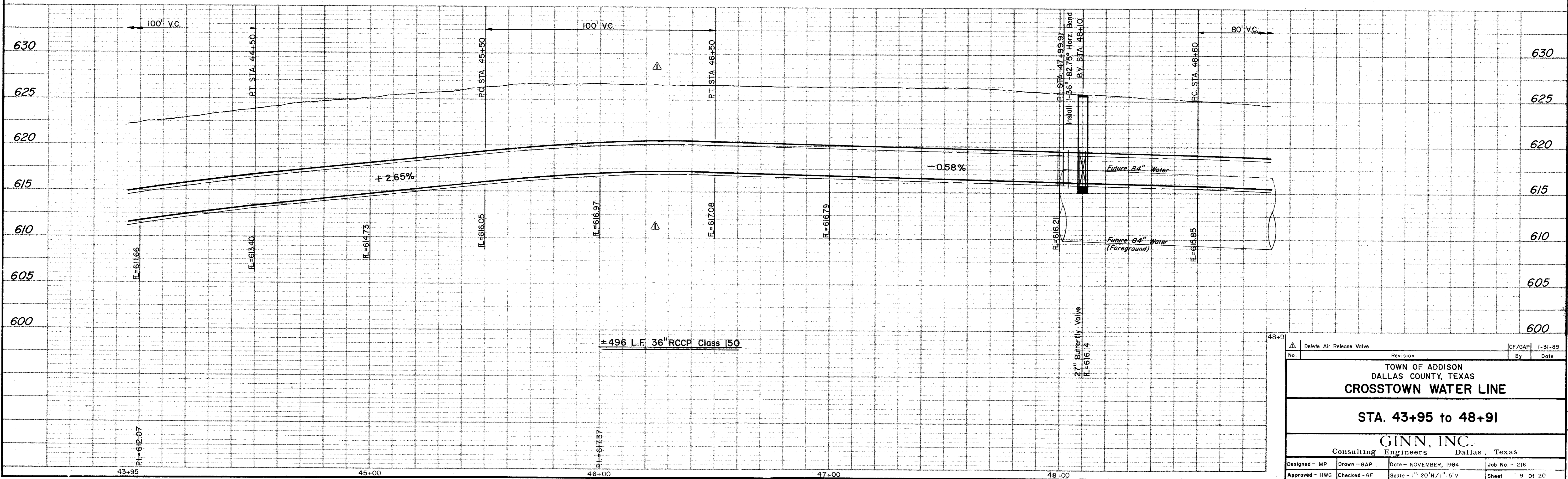
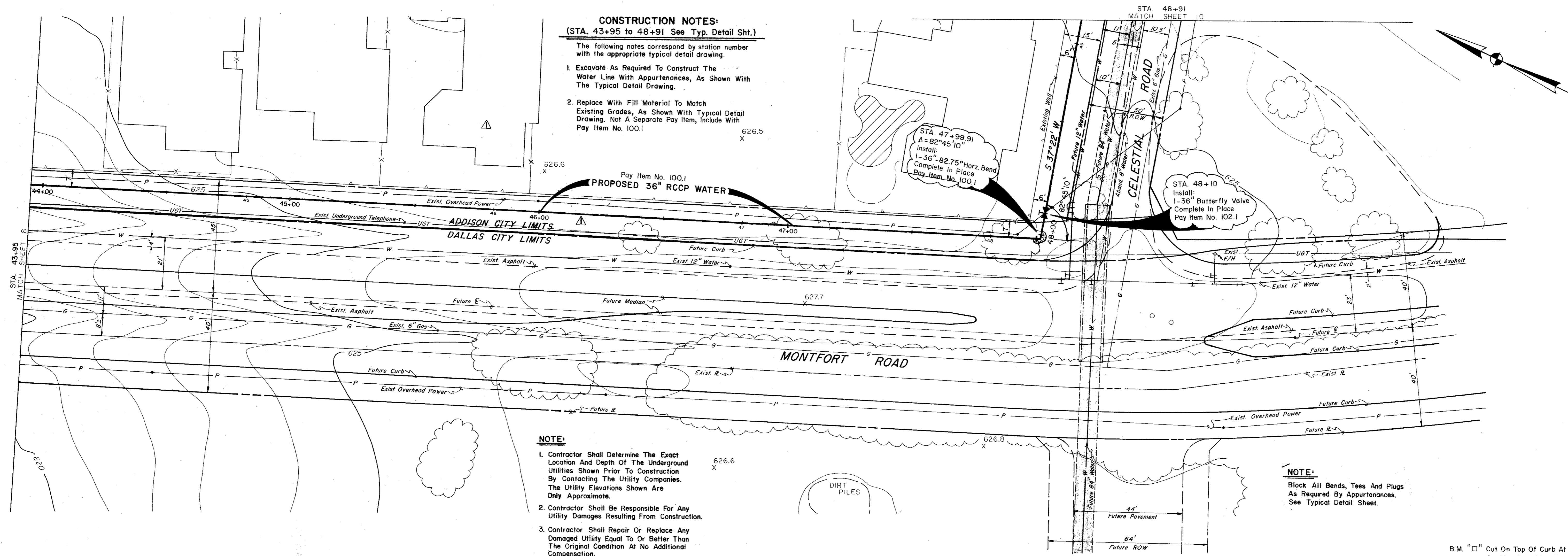
NOTE:

1. Contractor Shall Determine The Exact Location And Depth Of The Underground Utilities Shown Prior To Construction By Contacting The Utility Companies. The Utility Elevations Shown Are Only Approximate.
2. Contractor Shall Be Responsible For Any Utility Damages Resulting From Construction.
3. Contractor Shall Repair Or Replace Any Damaged Utility Equal To Or Better Than The Original Condition At No Additional Compensation.

NOTE:

Block All Bends, Tees And Plugs As Required By Appurtenances. See Typical Detail Sheet.

B.M. "□" Cut On Top Of Curb At Sta. 38+82± On Montfort Rd. Elev. 604.714



No.	Revision	By	Date	GF/GAP	I-31-85
1	Delete Air Release Valve				
TOWN OF ADDISON DALLAS COUNTY, TEXAS CROSTOWN WATER LINE STA. 43+95 to 48+91 GINN, INC. Consulting Engineers Dallas, Texas					
Designed - MP	Drawn - GAP	Date - NOVEMBER, 1984	Job No. - 216		
Approved - HWG	Checked - GF	Scale - 1"=20'H/1"=5'V	Sheet - 9	Of 20	