

TOWN OF
ADDISON
 DALLAS COUNTY, TEXAS

CONSTRUCTION PLANS FOR

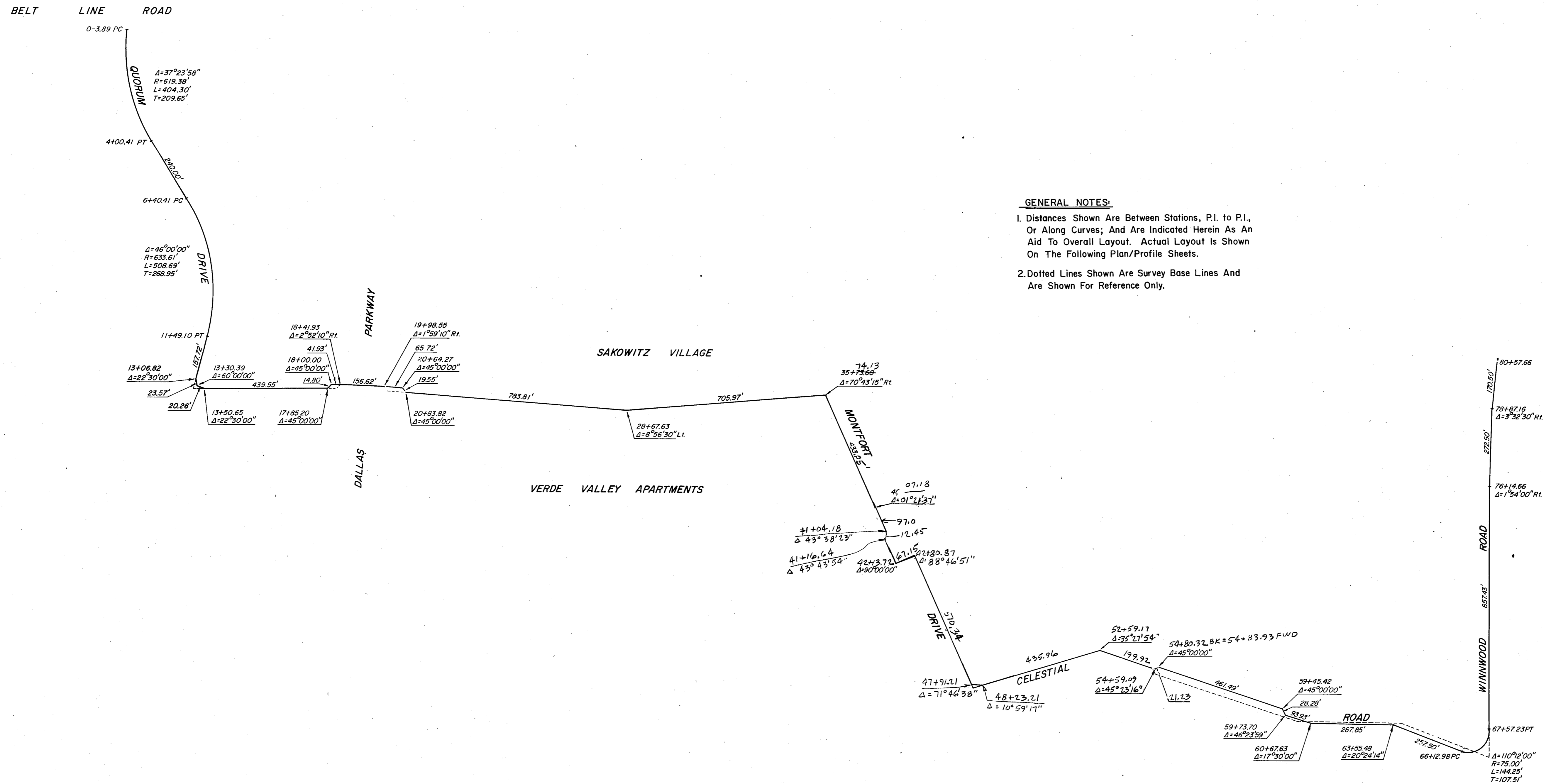
CROSSTOWN WATER LINE

Approved By:

 Mayor, Town Of Addison

 Date

GINN, INC.
 Consulting Engineers Dallas, Texas
 November, 1984



GENERAL NOTES:

1. Distances Shown Are Between Stations, P.I. to P.I., Or Along Curves; And Are Indicated Herein As An Aid To Overall Layout. Actual Layout Is Shown On The Following Plan/Profile Sheets.
2. Dotted Lines Shown Are Survey Base Lines And Are Shown For Reference Only.

AS BUILT 3-19-86

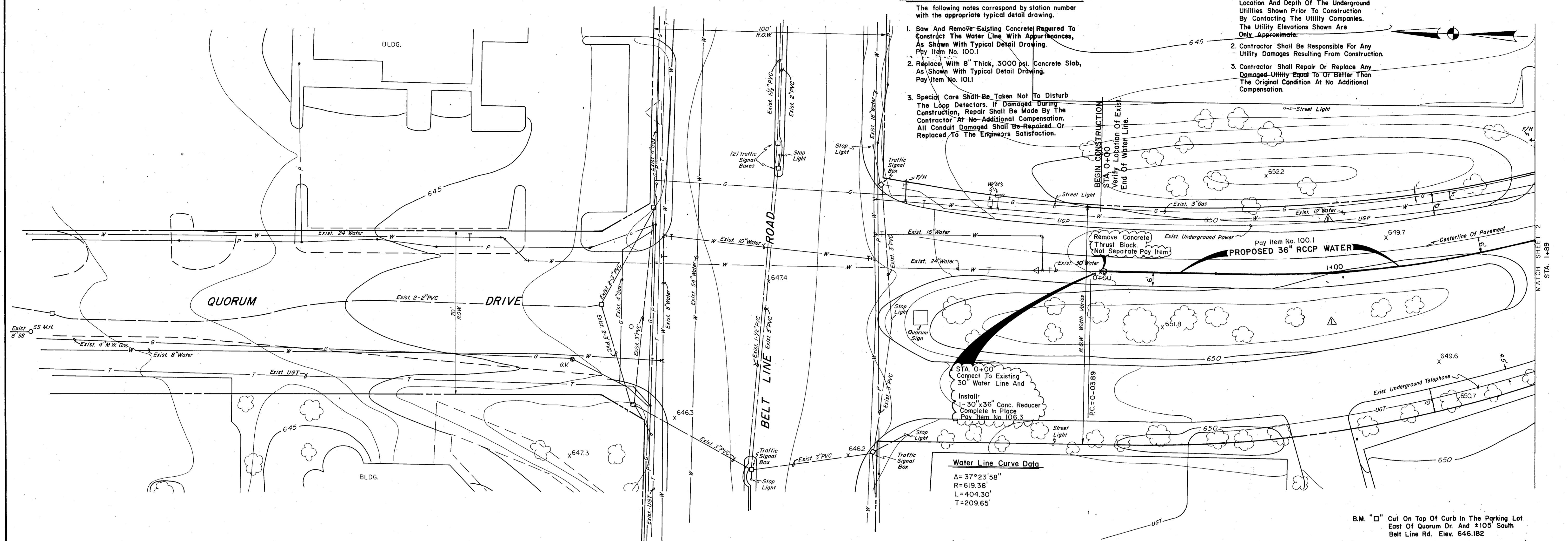
TOWN OF ADDISON DALLAS COUNTY, TEXAS			
CROSTOWN WATER LINE			
CENTERLINE ALIGNMENT LAYOUT PLAN			
GINN, INC.			
Consulting Engineers Dallas, Texas			
Designed - MP	Drawn - TEC	Date - NOVEMBER, 1984	Job No. - 216
Approved - HWG	Checked - GF	Scale - 1" = 200'	Sheet 8 Of

CONSTRUCTION NOTES:
(STA. 0+00 to 1+89 See Typ. Detail Sht.)

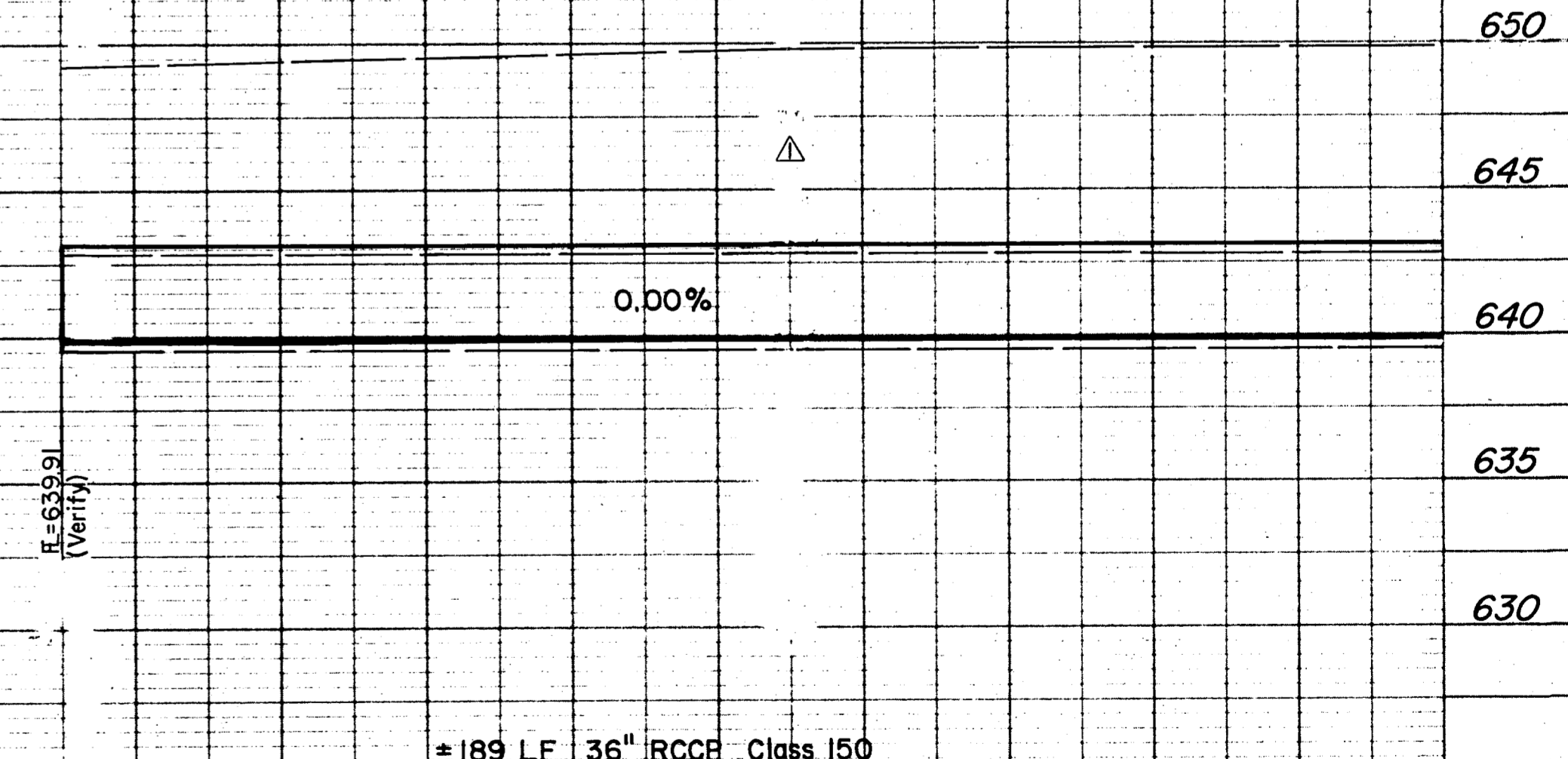
- The following notes correspond by station number with the appropriate typical detail drawing.
1. Saw And Remove Existing Concrete Required To Construct The Water Line With Apparances, As Shown With Typical Detail Drawing. Pay Item No. 100.1
 2. Replace With 8" Thick, 3000 psi Concrete Slab, As Shown With Typical Detail Drawing. Pay Item No. 101.1
 3. Special Care Shall Be Taken Not To Disturb The Loop Detectors. If Damaged During Construction, Repair Shall Be Made By The Contractor At No Additional Compensation. All Conduit Damaged Shall Be Repaired Or Replaced To The Engineers Satisfaction.

NOTE:

1. Contractor Shall Determine The Exact Location And Depth Of The Underground Utilities Shown Prior To Construction By Contacting The Utility Companies. The Utility Elevations Shown Are Only Approximate.
2. Contractor Shall Be Responsible For Any Utility Damages Resulting From Construction.
3. Contractor Shall Repair Or Replace Any Damaged Utility Equal To Or Better Than The Original Condition At No Additional Compensation.



Water Line Curve Data
 $\Delta = 37^\circ 23' 58''$
 $R = 619.38'$
 $L = 404.30'$
 $T = 209.65'$



189 LF 36" RCCP Class 150

Delete Air Release Valve		AS BUILT	1+89 3-19-84
No.	Revision	By	Date
TOWN OF ADDISON DALLAS COUNTY, TEXAS CROSTOWN WATER LINE			
STA. 0+00 to 1+89			
GINN, INC. Consulting Engineers Dallas, Texas			
Designed - MP	Drawn - GAP	Date - NOVEMBER, 1984	Job No. - 216
Approved - HWG	Checked - GF	Scale - 1" = 20' H / 1" = 5' V	Sheet 1 OF 20

CONSTRUCTION NOTES:
(STA. 1+89 to 7+87 See Typ. Detail Sht.)

- The following notes correspond by station number with the appropriate typical detail drawing.
1. Saw And Remove Existing Concrete Required To Construct The Water Line With Appurtenances, As Shown With Typical Detail Drawing. Pay Item No. 101.1
 2. Replace With 8" Thick, 3000 psi. Concrete Slab, As Shown With Typical Detail Drawing. Pay Item No. 101.1
 3. Special Care Shall Be Taken Not To Disturb The Loop Detectors. If Damaged During Construction, Repair Shall Be Made By The Contractor At No-Additional Compensation. All Conduit Damaged Shall Be Repaired Or Replaced To The Engineers Satisfaction.

STA. 2+00#
Install: 36" x 12" Tee
#25 L.F. 12" PVC Water Line
Tie To Existing 12" Water Line
w/ 12" x 12" Tapping Sleeve (Mueller H-615)
And Valve (Mueller H-667).
Pay Item No. 106.4

Saw, Remove & Replace
Exist. Pvmf. As Required.
Pay Item No. 101.1

Lower 20 L.F.
Exist. 8" Water Line
Pay Item No. 106.6

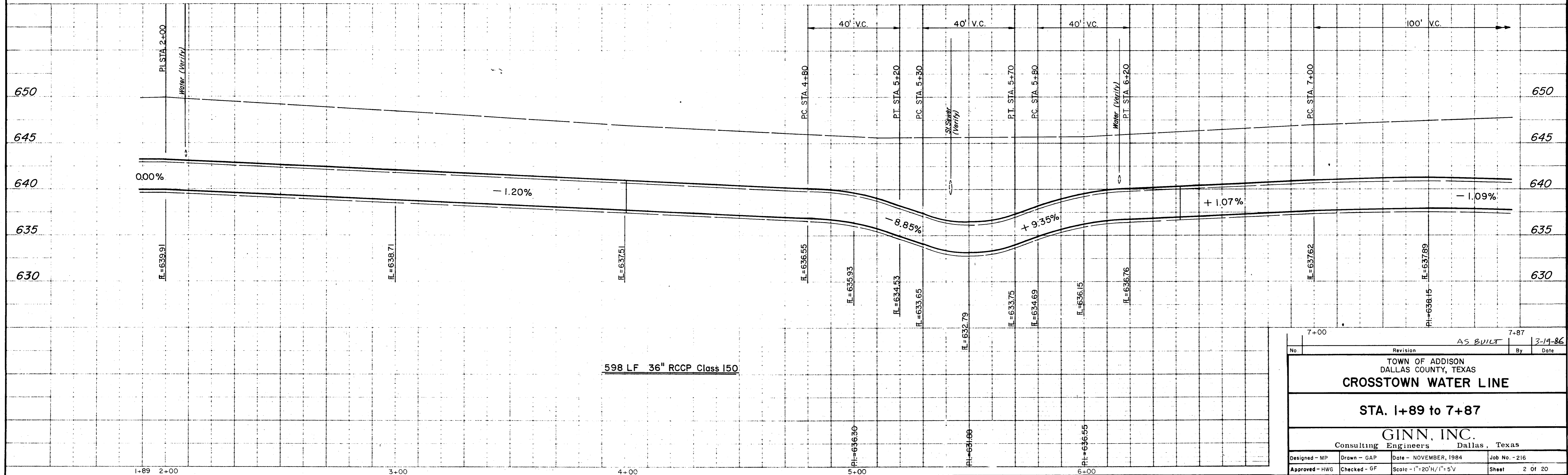
Lower 15 L.F.
Exist. 8" Water Line
Pay Item No. 106.6

Water Line Curve Data
Δ = 37° 23' 58"
R = 619.38'
L = 404.30'
T = 209.65'

Water Line Curve Data
Δ = 46° 00' 00"
R = 633.61'
L = 508.69'
T = 268.65'

- NOTE:**
1. Contractor Shall Determine The Exact Location And Depth Of The Underground Utilities Shown Prior To Construction By Contracting The Utility Companies. The Utility Elevations Shown Are Only Approximate.
 2. Contractor Shall Be Responsible For Any Utility Damages Resulting From Construction.
 3. Contractor Shall Repair Or Replace Any Damaged Utility Equal To Or Better Than The Original Condition At No Additional Compensation.

B.M. "□" Cut On Top Of Curb In The Parking Lot East Of Quorum Dr. And ±105' South Belt Line Rd. Elev. 646.182



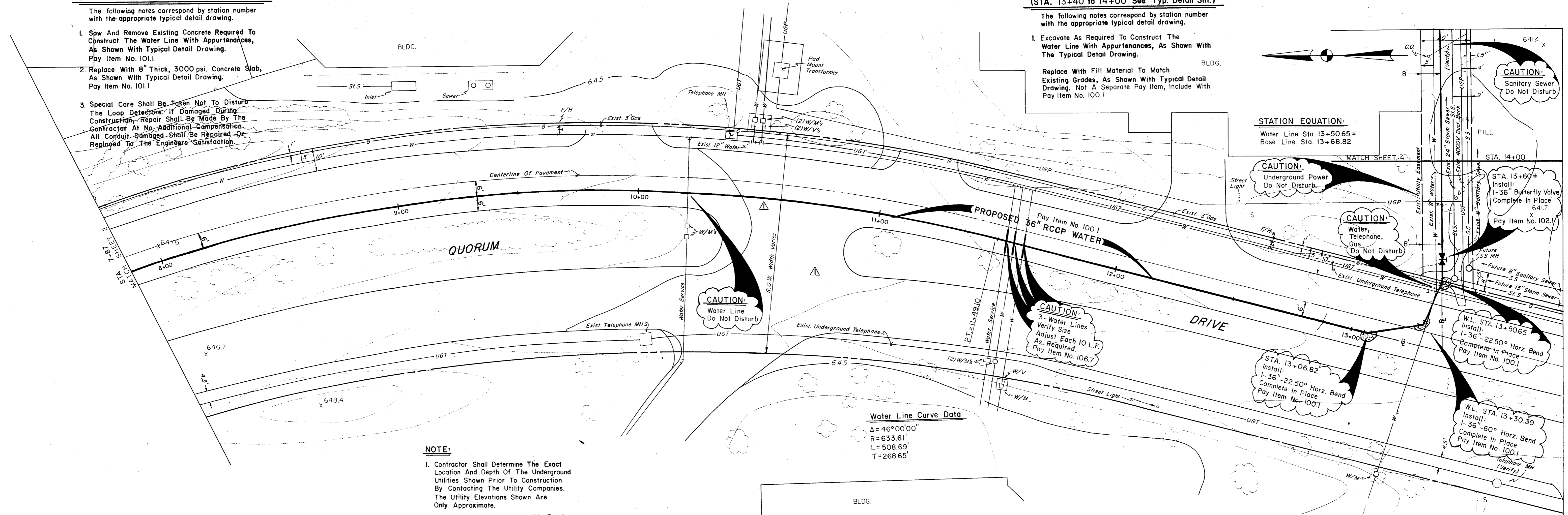
No.	Revision	By	Date
	AS BUILT		3-19-86
TOWN OF ADDISON DALLAS COUNTY, TEXAS CROSTOWN WATER LINE			
STA. 1+89 to 7+87			
GINN, INC. Consulting Engineers Dallas, Texas			
Designed - MP	Drawn - GAP	Date - NOVEMBER, 1984	Job No. - 216
Approved - HWG	Checked - GF	Scale - 1"=20'H/1"=5'V	Sheet 2 of 20

CONSTRUCTION NOTES:
(STA. 7+87 to 13+40 See Typ. Detail Sht.)

- The following notes correspond by station number with the appropriate typical detail drawing.
1. Saw And Remove Existing Concrete Required To Construct The Water Line With Appurtenances, As Shown With Typical Detail Drawing. Pay Item No. 101.1
 2. Replace With 8" Thick, 3000 psi. Concrete Slab, As Shown With Typical Detail Drawing. Pay Item No. 101.1
 3. Special Care Shall Be Taken Not To Disturb The Loop Detectors. If Damaged During Construction, Repair Shall Be Made By The Contractor At No Additional Compensation. All Conduit Damaged Shall Be Repaired Or Replaced To The Engineers Satisfaction.

CONSTRUCTION NOTES:
(STA. 13+40 to 14+00 See Typ. Detail Sht.)

- The following notes correspond by station number with the appropriate typical detail drawing.
1. Excavate As Required To Construct The Water Line With Appurtenances, As Shown With The Typical Detail Drawing.
- Replace With Fill Material To Match Existing Grades, As Shown With Typical Detail Drawing. Not A Separate Pay Item, Include With Pay Item No. 100.1



STATION EQUATION:
Water Line Sta. 13+50.65 =
Base Line Sta. 13+68.82

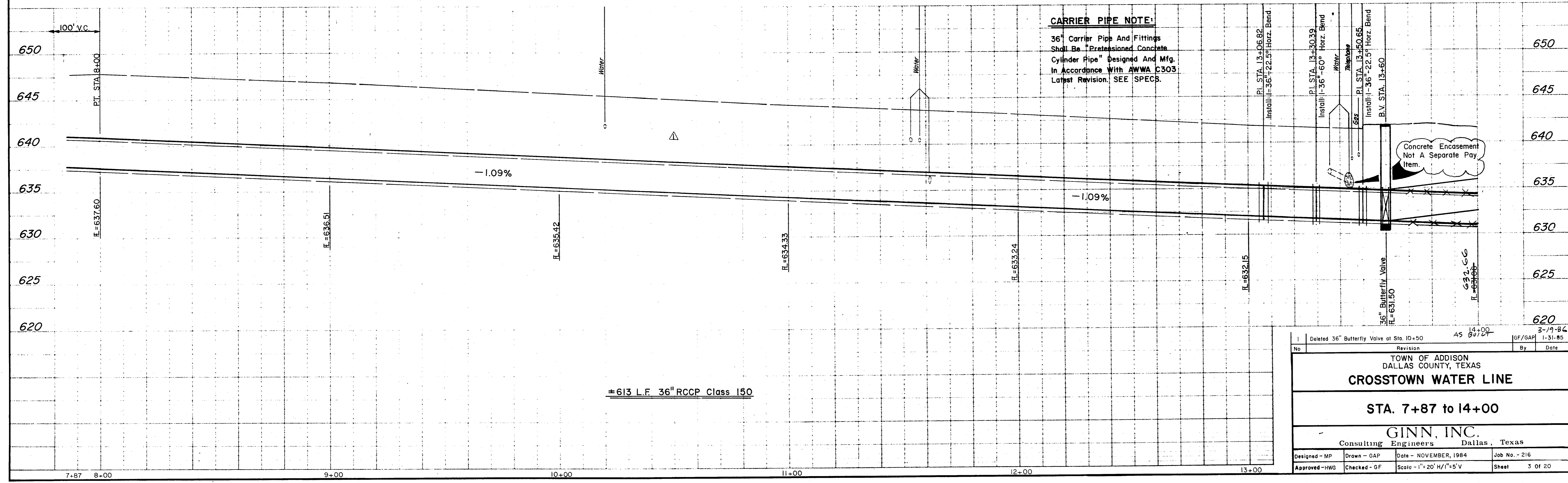
Water Line Curve Data:
Δ = 46°00'00"
R = 633.61'
L = 508.69'
T = 268.65'

- NOTE:**
1. Contractor Shall Determine The Exact Location And Depth Of The Underground Utilities Shown Prior To Construction By Contracting The Utility Companies. The Utility Elevations Shown Are Only Approximate.
 2. Contractor Shall Be Responsible For Any Utility Damages Resulting From Construction.
 3. Contractor Shall Repair Or Replace Any Damaged Utility Equal To Or Better Than The Original Condition At No Additional Compensation.

- NOTE:**
- Block All Bends, Tees And Plugs As Required By Appurtenances. See Typical Detail Sheet.

CARRIER PIPE NOTE:

36" Carrier Pipe And Fittings Shall Be "Prestressed Concrete Cylinder Pipe" Designed And Mfg. In Accordance With AWWA C303 Latest Revision. SEE SPECS.



Deleted 36" Butterfly Valve at Sta. 10+50		AS 8/1/84	GF/GAP	3-19-84
No.	Revision	By	Date	
TOWN OF ADDISON DALLAS COUNTY, TEXAS CROSTOWN WATER LINE				
STA. 7+87 to 14+00				
GINN, INC. Consulting Engineers Dallas, Texas				
Designed - MP	Drawn - GAP	Date - NOVEMBER, 1984	Job No. - 216	
Approved - HWG	Checked - GF	Scale - 1" = 20' H/I = 5' V	Sheet 3 of 20	

NOTE:

- Contractor Shall Determine The Exact Location And Depth Of The Underground Utilities Shown Prior To Construction By Contacting The Utility Companies. The Utility Elevations Shown Are Only Approximate.
- Contractor Shall Be Responsible For Any Utility Damages Resulting From Construction.
- Contractor Shall Repair Or Replace Any Damaged Utility Equal To Or Better Than The Original Condition At No Additional Compensation.

CONSTRUCTION NOTES:
(STA. 14+00 to 18+20 See Typ. Detail Sht.)

- The following notes correspond by station number with the appropriate typical detail drawing.
- Excavate As Required To Construct The Water Line With Appurtenances, As Shown With The Typical Detail Drawing.
- Replace With Fill Material To Match Existing Grades, As Shown With Typical Detail Drawing. Not A Separate Pay Item, Include With Pay Item No. 100.1
- The Size Of The Bore Pits Shall Be Kept As Minimal As Required To Complete Construction.

STA. 18+10 to STA. 19+02
Install:
1-54"x92" Steel Pipe
Complete In Place
Pay Item No. 105.1

LINE RELOCATED AROUND EXIST. TRANSFORMER & OVER EXIST. LINES W/GRADE ADAPTORS

P.I. STA. 18+00
Δ = 45°00'00"
Install:
1-36"-45° Horz. Bend
Complete In Place
Pay Item No. 100.1

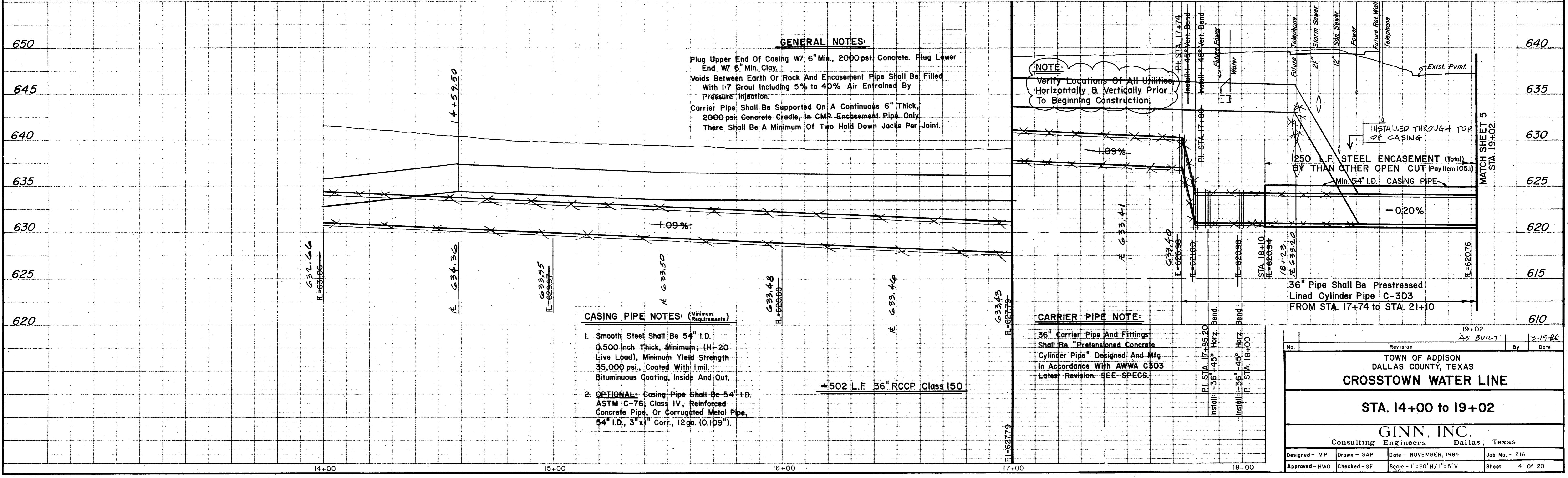
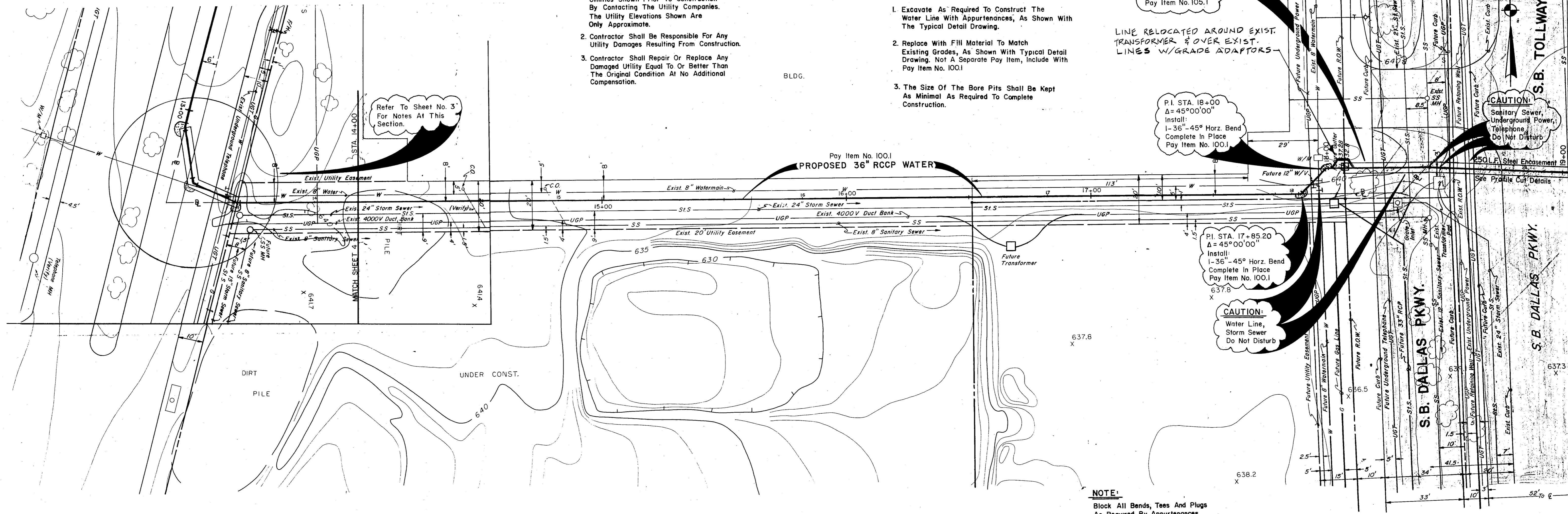
P.I. STA. 17+85.20
Δ = 45°00'00"
Install:
1-36"-45° Horz. Bend
Complete In Place
Pay Item No. 100.1

CAUTION:
Water Line, Storm Sewer
Do Not Disturb

CAUTION!
Sanitary Sewer, Underground Power, Telephone, Do Not Disturb

NOTE:
Block All Bends, Tees And Plugs As Required By Appurtenances. See Typical Detail Sheet.

B.M. "□" Cut On Top Of West Median Curb On Dallas Pkwy. Elev. 646.317



GENERAL NOTES:

- Plug Upper End Of Casing W/ 6" Min., 2000 psi. Concrete. Plug Lower End W/ 6" Min. Clay.
- Voids Between Earth Or Rock And Encasement Pipe Shall Be Filled With 1:7 Grout Including 5% to 40% Air Entrained By Pressure Injection.
- Carrier Pipe Shall Be Supported On A Continuous 6" Thick, 2000 psi. Concrete Cradle, In CMP Encasement Pipe Only. There Shall Be A Minimum Of Two Hold Down Jacks Per Joint.

NOTE:
Verify Locations Of All Utilities Horizontally & Vertically Prior To Beginning Construction.

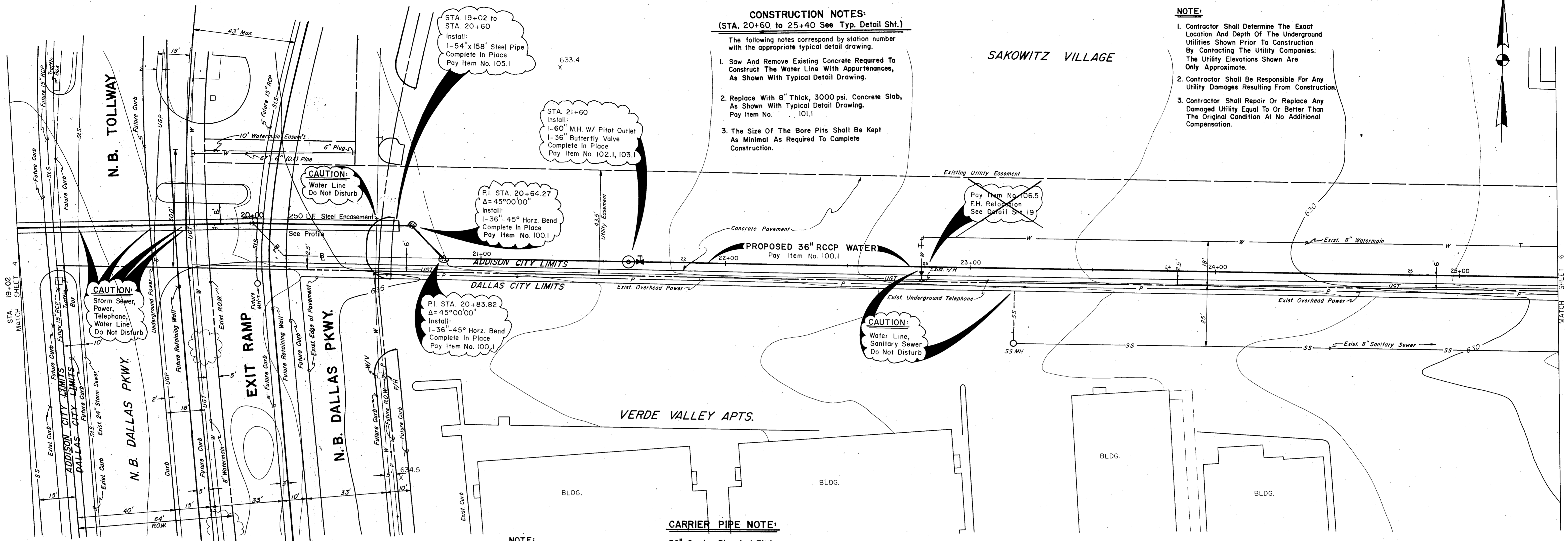
CASING PIPE NOTES: (Minimum Requirements)

- Smooth Steel Shall Be 54" I.D. 0.500 Inch Thick, Minimum; (H-20 Live Load), Minimum Yield Strength 35,000 psi., Coated With 1mil. Bituminous Coating, Inside And/Out.
- OPTIONAL:** Casing Pipe Shall Be 54" I.D. ASTM C-76; Class IV, Reinforced Concrete Pipe, Or Corrugated Metal Pipe, 54" I.D., 3"x1" Corr., 12 ga. (0.109").

CARRIER PIPE NOTE:

36" Carrier Pipe And Fittings Shall Be "Prestressed Concrete Cylinder Pipe" Designed And Mfg In Accordance With AWWA C303 Latest Revision. SEE SPECS.

19+02		AS BUILT		3-19-84	
No.	Revision	By	Date		
TOWN OF ADDISON DALLAS COUNTY, TEXAS CROSSTOWN WATER LINE STA. 14+00 to 19+02 GINN, INC. Consulting Engineers Dallas, Texas					
Designed - MP	Drawn - GAP	Date - NOVEMBER, 1984	Job No. - 216		
Approved - HWG	Checked - GF	Scale - 1"=20' H/1"=5' V	Sheet 4 OF 20		



CONSTRUCTION NOTES:
(STA. 20+60 TO 25+40 See Typ. Detail Sht.)

- The following notes correspond by station number with the appropriate typical detail drawing.
1. Saw And Remove Existing Concrete Required To Construct The Water Line With Appurtenances, As Shown With Typical Detail Drawing.
 2. Replace With 8" Thick, 3000 psi. Concrete Slab, As Shown With Typical Detail Drawing. Pay Item No. 101.1
 3. The Size Of The Bore Pits Shall Be Kept As Minimal As Required To Complete Construction.

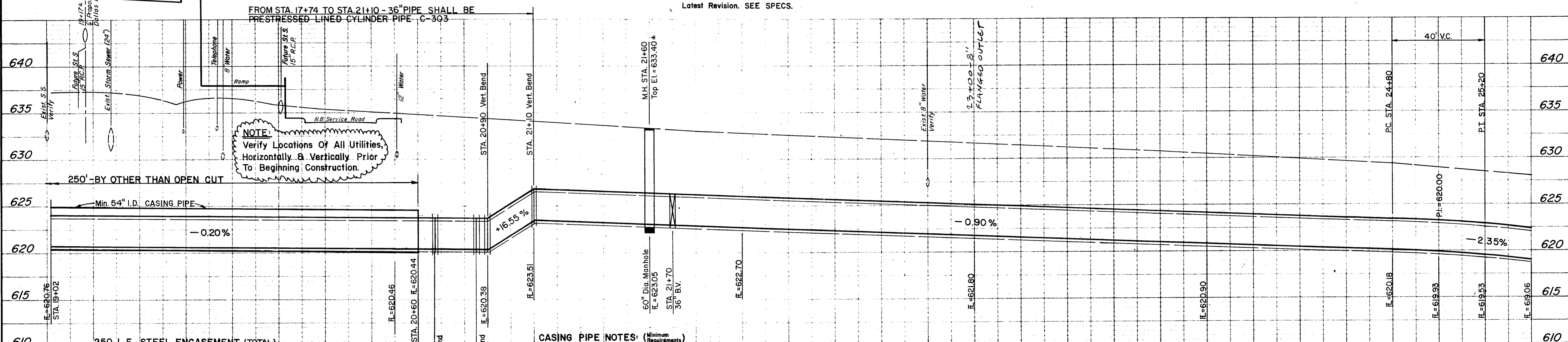
- NOTE:**
1. Contractor Shall Determine The Exact Location And Depth Of The Underground Utilities Shown Prior To Construction By Contacting The Utility Companies. The Utility Elevations Shown Are Only Approximate.
 2. Contractor Shall Be Responsible For Any Utility Damages Resulting From Construction.
 3. Contractor Shall Repair Or Replace Any Damaged Utility Equal To Or Better Than The Original Condition At No Additional Compensation.

CARRIER PIPE NOTE:

36" Carrier Pipe And Fittings Shall Be "Pretensioned Concrete Cylinder Pipe" Designed And Mfg. In Accordance With AWWA C303 Latest Revision. SEE SPECS.

NOTE:
Block All Bends, Tees And Plugs As Required By Appurtenances. See Typical Detail Sheet.

B.M. "□" Cut On Top Of West Median Curb On Dallas Pkwy. Elev. 646.317



NOTE:
Verify Locations Of All Utilities, Horizontally & Vertically Prior To Beginning Construction.

CASING PIPE NOTES: (Minimum Requirements)

1. Smooth Steel Shall Be 54" I.D. 0.500 inch Thick, Minimum; (H-20 Live Load), Minimum Yield Strength 35,000 psi., Coated With mil. Bituminous Coating, Inside And Out.
2. OPTIONAL: Casing Pipe Shall Be 54" I.D. ASTM C-76, Class IV, Reinforced Concrete Pipe, Or Corrugated Metal Pipe, 54" I.D.; 3' x 1' Corr; 12 ga. (0.109").

± 638 L.F. 36" RCCP Class 150

GENERAL NOTES:

- Plug Upper End Of Casing W/ 6" Min., 2000 psi. Concrete. Plug Lower End W/ 6" Min. Clay.
- Voids Between Earth Of Rock And Encasement Pipe Shall Be Filled With 1:7 Grout Including 5% to 40% Air Entrained By Pressure Injection.
- Carrier Pipe Shall Be Supported On A Continuous 6" Thick, 2000 psi. Concrete Cradle, In CMP Encasement Pipe Only. There Shall Be A Minimum Of Two Hold Down Jacks Per Joint.

No.	Revision	AS BUILT	By	Date
				5-19-86
TOWN OF ADDISON DALLAS COUNTY, TEXAS CROSSTOWN WATER LINE				
STA. 19+02 TO 25+40				
GINN, INC. Consulting Engineers Dallas, Texas				
Designed - MP	Drawn - GAP	Date - NOVEMBER, 1984	Job No. - 216	
Approved - HWG	Checked - GF	Scale - 1" = 20' H/1" = 5' V	Sheet 5 OF 20	

CONSTRUCTION NOTES:
(STA. 25+40 to 31+74 See Typ. Detail Sht.)

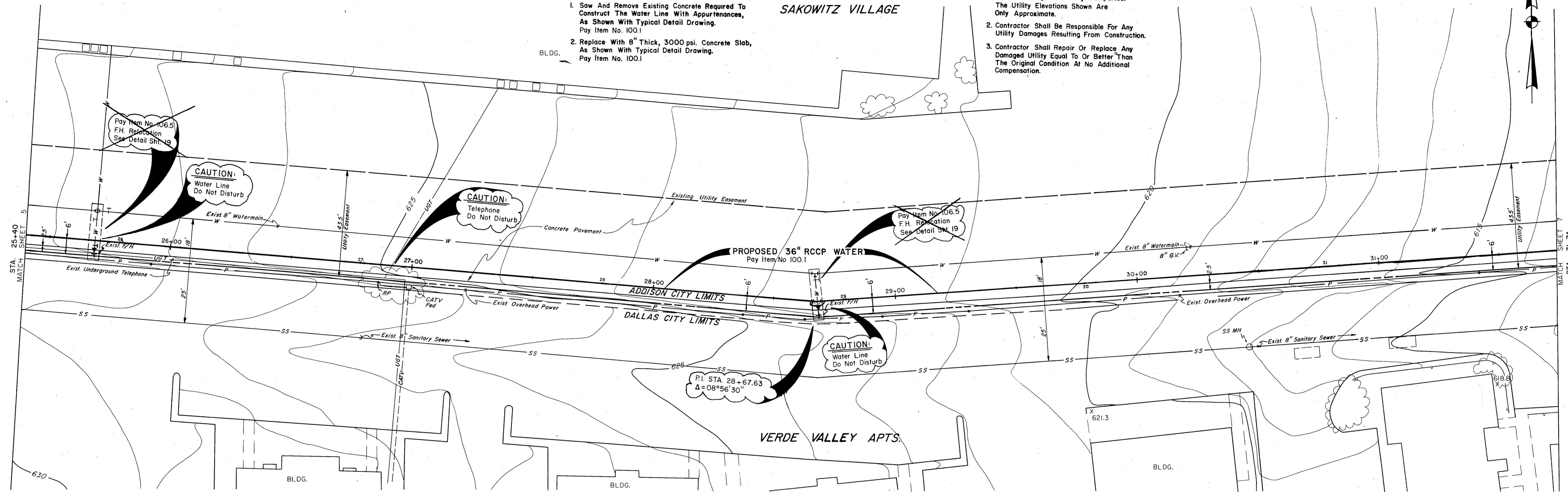
The following notes correspond by station number with the appropriate typical detail drawing.

1. Saw And Remove Existing Concrete Required To Construct The Water Line With Appurtenances, As Shown With Typical Detail Drawing. Pay Item No. 100.1
2. Replace With 8" Thick, 3000 psi. Concrete Slab, As Shown With Typical Detail Drawing. Pay Item No. 100.1

NOTE:

1. Contractor Shall Determine The Exact Location And Depth Of The Underground Utilities Shown Prior To Construction By Contacting The Utility Companies. The Utility Elevations Shown Are Only Approximate.
2. Contractor Shall Be Responsible For Any Utility Damages Resulting From Construction.
3. Contractor Shall Repair Or Replace Any Damaged Utility Equal To Or Better Than The Original Condition At No Additional Compensation.

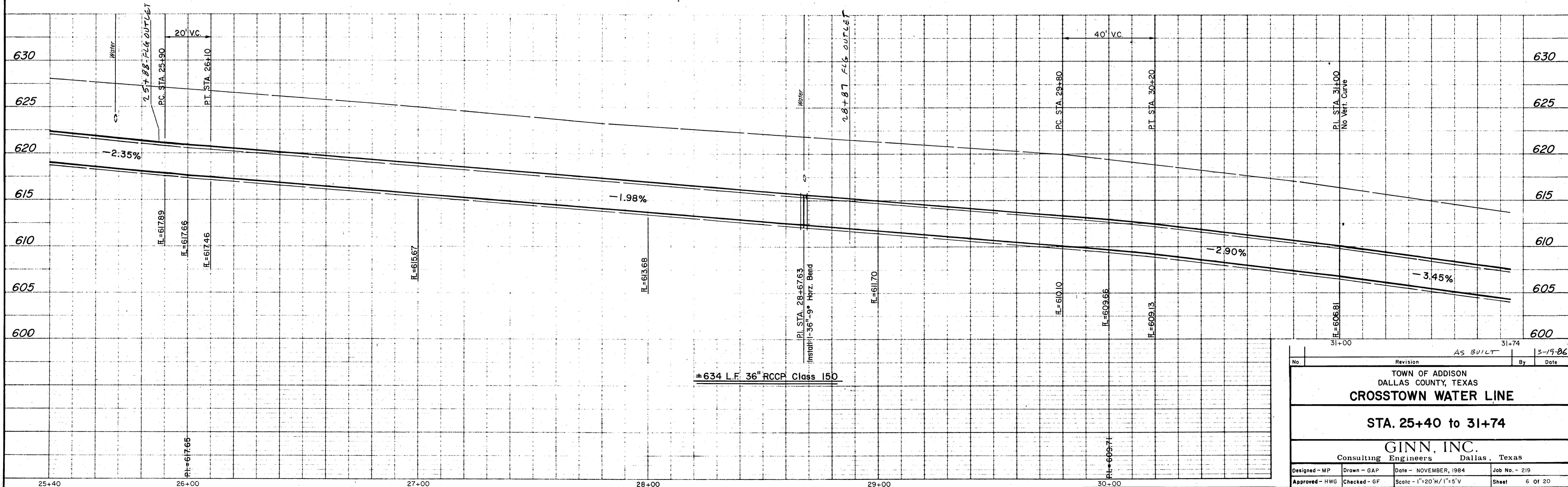
SAKOWITZ VILLAGE



NOTE:

Block All Bends, Tees And Plugs As Required By Appurtenances. See Typical Detail Sheet.

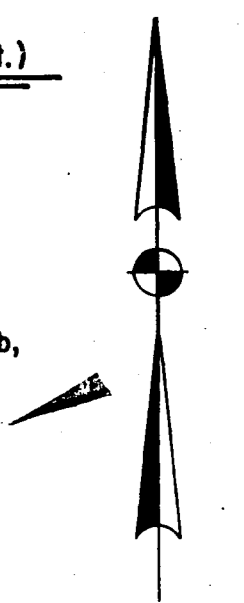
B.M. "□" Cut On Sidewalk #78' Lt. Of Sta. 27+82± At Sakowitz Village. Elev. 624.381



No.	Revision	AS BUILT	By	Date
				3-19-86
TOWN OF ADDISON DALLAS COUNTY, TEXAS CROSTOWN WATER LINE				
STA. 25+40 to 31+74				
GINN, INC. Consulting Engineers Dallas, Texas				
Designed - MP	Drawn - GAP	Date - NOVEMBER, 1984	Job No. - 219	
Approved - HWG	Checked - GF	Scale - 1"=20' H/1"=5' V	Sheet 6 OF 20	

CONSTRUCTION NOTES:
(STA. 31+74 to 37+02 See Typ. Detail Sht.)

- The following notes correspond by station number with the appropriate typical detail drawing.
1. Saw And Remove Existing Concrete Required To Construct The Water Line With Appurtenances, As Shown With Typical Detail Drawing. Pay Item No. 100.1
 2. Replace With 8" Thick, 3000 psi. Concrete Slab, As Shown With Typical Detail Drawing. Pay Item No. 100.1

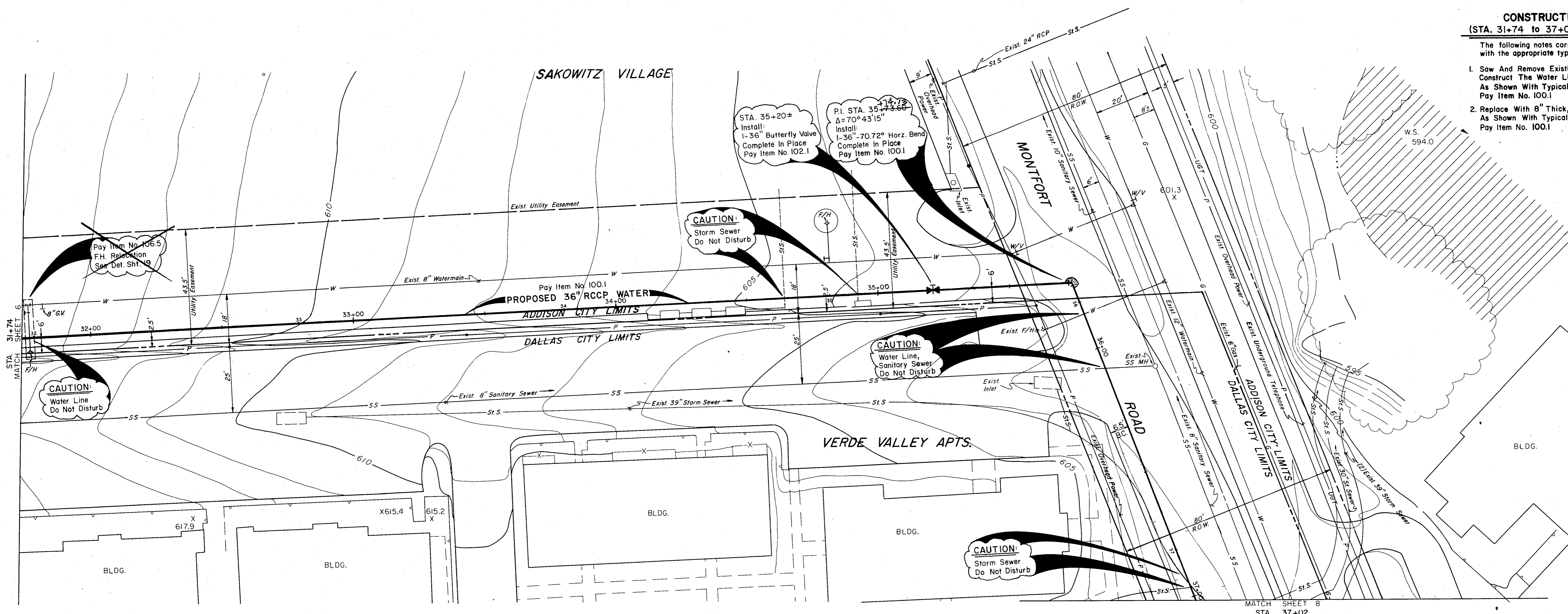


NOTE:

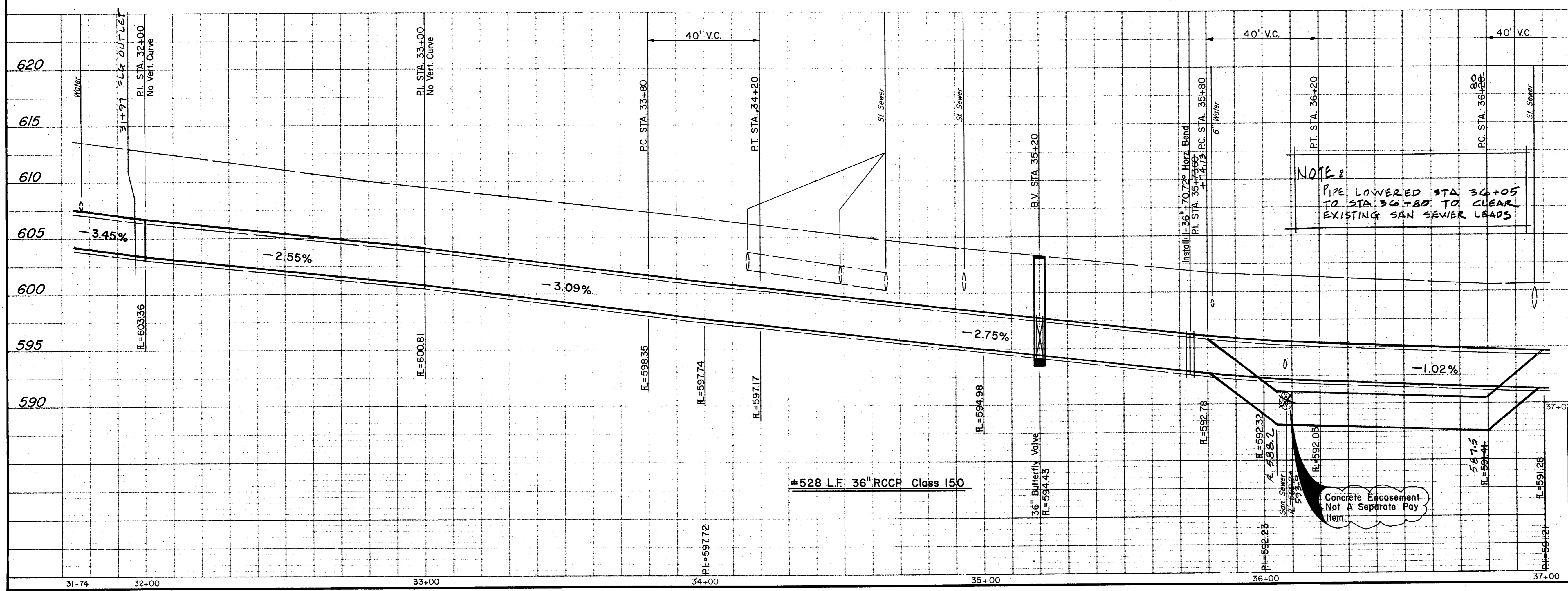
1. Contractor Shall Determine The Exact Location And Depth Of The Underground Utilities Shown Prior To Construction By Contacting The Utility Companies. The Utility Elevations Shown Are Only Approximate.
2. Contractor Shall Be Responsible For Any Utility Damages Resulting From Construction.
3. Contractor Shall Repair Or Replace Any Damaged Utility Equal To Or Better Than The Original Condition At No Additional Compensation.

NOTE:

Block All Bends, Tees And Plugs As Required By Appurtenances. See Typical Detail Sheet.



B.M. "□" Cut On Inlet Top Of Curb At Sta. 35+29±, 42' Lt. Of B In Sakowitz Village. Elev. 603.741



Revision		AS BUILT		3-19-84	
No.	By	Date			
TOWN OF ADDISON DALLAS COUNTY, TEXAS CROSTOWN WATER LINE					
STA. 31+74 to 37+02					
GINN, INC. Consulting Engineers Dallas, Texas					
Designed - MP	Drawn - GAP	Date - NOVEMBER, 1984	Job No. - 216		
Approved - HWG	Checked - GF	Scale - 1" = 20'H / 1" = 5' V	Sheet 7 of 20		

CONSTRUCTION NOTES:
(STA. 37+02 to 40+22 See Typ. Detail Sht.)

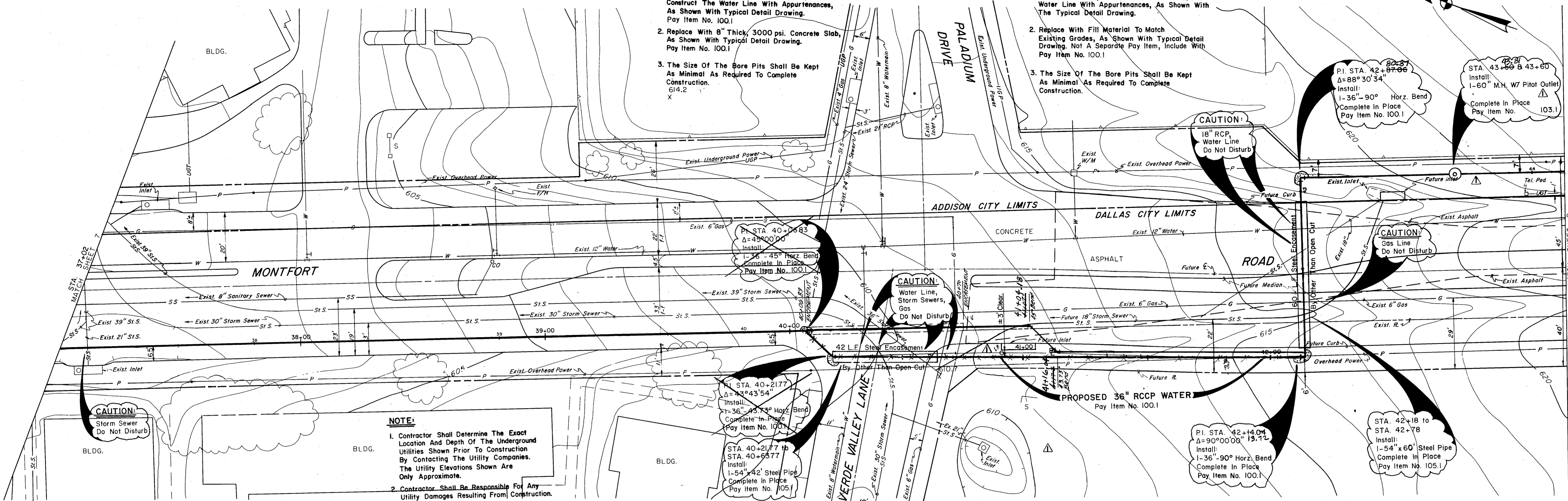
The following notes correspond by station number with the appropriate typical detail drawing.

1. Saw And Remove Existing Concrete Required To Construct The Water Line With Appurtenances, As Shown With Typical Detail Drawing. Pay Item No. 100.1
2. Replace With 8" Thick, 3000 psi. Concrete Slab, As Shown With Typical Detail Drawing. Pay Item No. 100.1
3. The Size Of The Bore Pits Shall Be Kept As Minimal As Required To Complete Construction. 614.2 X

CONSTRUCTION NOTES:
(STA. 40+64 to 43+95 See Typ. Detail Sht.)

The following notes correspond by station number with the appropriate typical detail drawing.

1. Excavate As Required To Construct The Water Line With Appurtenances, As Shown With The Typical Detail Drawing.
2. Replace With Fill Material To Match Existing Grades, As Shown With Typical Detail Drawing. Not A Separate Pay Item, Include With Pay Item No. 100.1
3. The Size Of The Bore Pits Shall Be Kept As Minimal As Required To Complete Construction.



CAUTION:
Storm Sewer
Do Not Disturb

NOTE:
1. Contractor Shall Determine The Exact Location And Depth Of The Underground Utilities Shown Prior To Construction By Contacting The Utility Companies. The Utility Elevations Shown Are Only Approximate.
2. Contractor Shall Be Responsible For Any Utility Damages Resulting From Construction.
3. Contractor Shall Repair Or Replace Any Damaged Utility Equal To Or Better Than The Original Condition At No Additional Compensation.

NOTE:
Block All Bends, Tees And Jugs As Required By Appurtenances. See Typical Detail Sheet.

CAUTION:
18" RCP Water Line
Do Not Disturb

P.I. STA. 42+87.06
Δ=88°30'34"
Install:
1-36"-90° Horiz. Bend
Complete In Place
Pay Item No. 100.1

STA. 43+59 & 43+60
Install:
1-60" M.H. W7 Pilot Outlet
Complete In Place
Pay Item No. 103.1

CAUTION:
Water Line,
Storm Sewers,
Gas
Do Not Disturb

CAUTION:
Gas Line
Do Not Disturb

P.I. STA. 42+14.04
Δ=90°00'00" 13.12
Install:
1-36"-90° Horiz. Bend
Complete In Place
Pay Item No. 100.1

STA. 42+18 to
STA. 42+78
Install:
1-54" x 60" Steel Pipe
Complete In Place
Pay Item No. 105.1

STATION EQUATION:
Water Line Sta. 42+87.06=
Base Line Sta. 43+07.15

B.M. "□" Cut On Top Of Curb Sta. 38+82=
On Montfort Rd. Elev. 604.714

GENERAL NOTES:

- 1. Plug Upper End Of Casing W/ 6" Min. 2000 psi. Concrete. Plug Lower End W/ 6" Min. Clay.
- 2. Voids Between Earth Or Rock And Encasement Pipe Shall Be Filled With 1:7 Grout Including 5% to 40% Air Entrained By Pressure Injection.
- 3. Carrier Pipe Shall Be Supported On A Continuous 6" Thick, 2000 psi. Concrete Cradle, In CMP Encasement Pipe Only. There Shall Be A Minimum Of Two Hold Down Jacks Per Joint.

CASING PIPE NOTES: (Minimum Requirements)

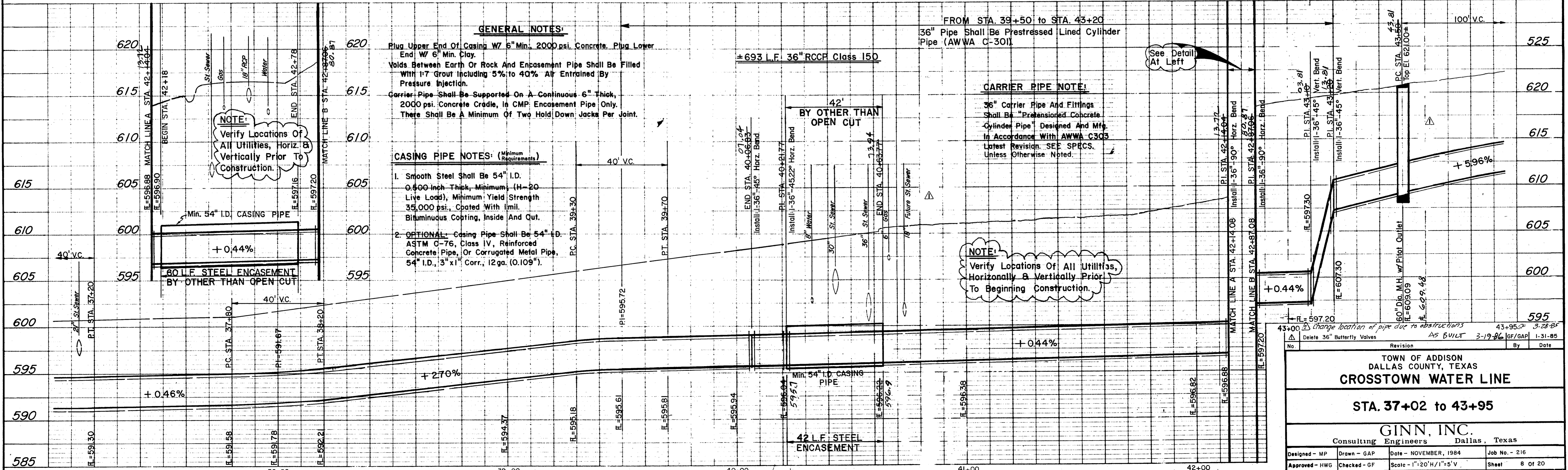
1. Smooth Steel Shall Be 54" I.D. 0.500 Inch Thick, Minimum (H-20 Live Load), Minimum Yield Strength 35,000 psi., Coated With Imil. Bituminous Coating, Inside And Out.
2. OPTIONAL Casing Pipe Shall Be 54" I.D. ASTM C-76, Class IV, Reinforced Concrete Pipe, Or Corrugated Metal Pipe, 54" I.D., 3" x 1" Corr., 12 ga. (0.109").

CARRIER PIPE NOTE:

36" Carrier Pipe And Fittings Shall Be "Prestressed Concrete Cylinder Pipe" Designed And Mfg. In Accordance With AWWA C303 Latest Revision. SEE SPECS. Unless Otherwise Noted.

NOTE:

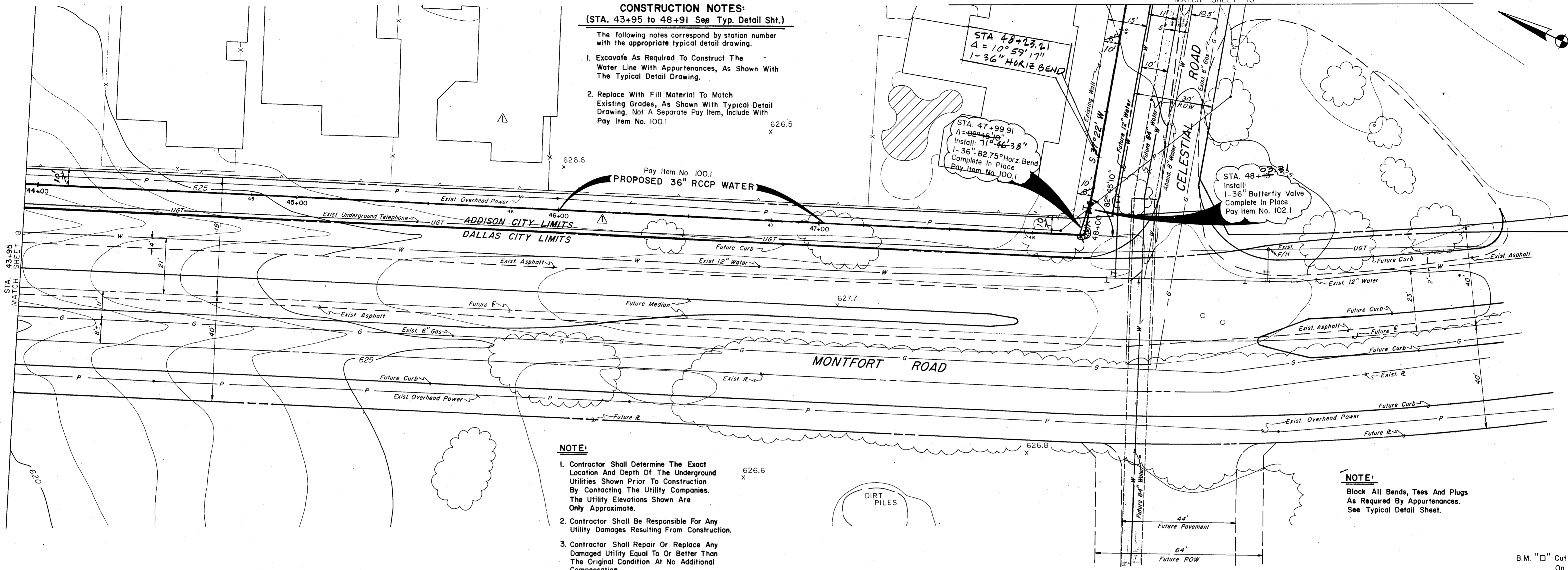
Verify Locations Of All Utilities, Horizontally & Vertically Prior To Beginning Construction.



<p>43+00 Change location of pipe due to obstructions AS BUILT 3-19-86 16F/GAP 1-31-85</p>			
No.	Revision	By	Date
<p>TOWN OF ADDISON DALLAS COUNTY, TEXAS CROSTOWN WATER LINE STA. 37+02 to 43+95</p>			
<p>GINN, INC. Consulting Engineers Dallas, Texas</p>			
Designed - MP	Drawn - GAP	Date - NOVEMBER, 1984	Job No. - 216
Approved - HWG	Checked - GF	Scale - 1"=20'H/1"=5'V	Sheet 8 OF 20

CONSTRUCTION NOTES:
(STA. 43+95 to 48+91 See Typ. Detail Sht.)

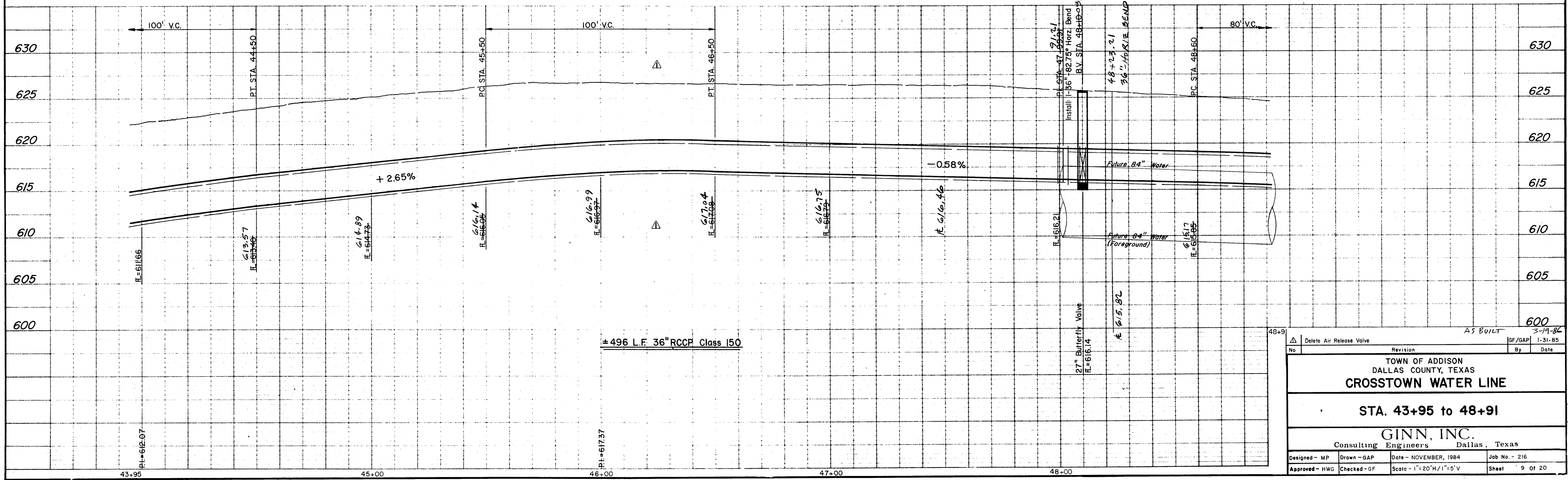
- The following notes correspond by station number with the appropriate typical detail drawing.
- Excavate As Required To Construct The Water Line With Appurtenances, As Shown With The Typical Detail Drawing.
 - Replace With Fill Material To Match Existing Grades, As Shown With Typical Detail Drawing. Not A Separate Pay Item, Include With Pay Item No. 100.1



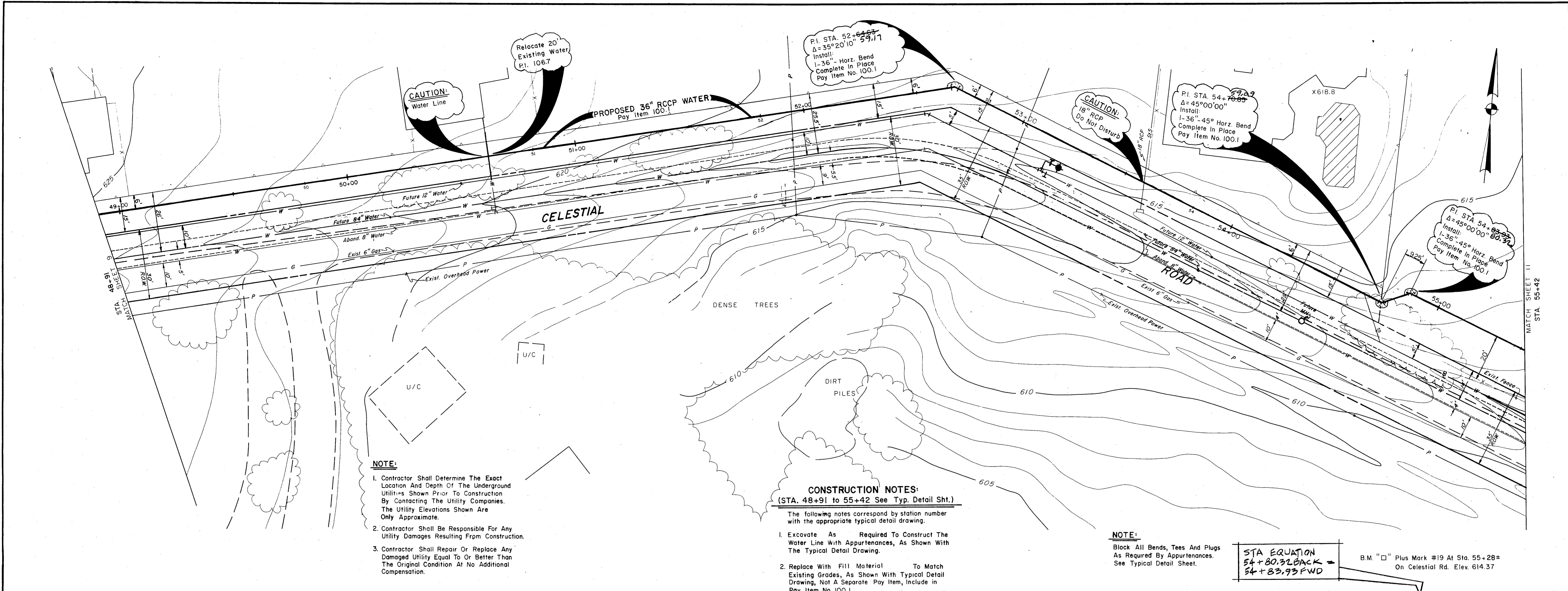
- NOTE:**
- Contractor Shall Determine The Exact Location And Depth Of The Underground Utilities Shown Prior To Construction By Contacting The Utility Companies. The Utility Elevations Shown Are Only Approximate.
 - Contractor Shall Be Responsible For Any Utility Damages Resulting From Construction.
 - Contractor Shall Repair Or Replace Any Damaged Utility Equal To Or Better Than The Original Condition At No Additional Compensation.

NOTE:
Block All Bends, Tees And Plugs As Required By Appurtenances. See Typical Detail Sheet.

B.M. "□" Cut On Top Of Curb At Sta. 38+82+ On Montfort Rd. Elev. 604.714



Delete Air Release Valve		Revision	By	Date
TOWN OF ADDISON DALLAS COUNTY, TEXAS CROSTOWN WATER LINE				
STA. 43+95 to 48+91				
GINN, INC. Consulting Engineers Dallas, Texas				
Designed - MP	Drawn - GAP	Date - NOVEMBER, 1984	Job No. - 216	
Approved - HWG	Checked - GF	Scale - 1"=20'H/1"=5'V	Sheet 9 Of 20	



NOTE:

- Contractor Shall Determine The Exact Location And Depth Of The Underground Utilities Shown Prior To Construction By Contacting The Utility Companies. The Utility Elevations Shown Are Only Approximate.
- Contractor Shall Be Responsible For Any Utility Damages Resulting From Construction.
- Contractor Shall Repair Or Replace Any Damaged Utility Equal To Or Better Than The Original Condition At No Additional Compensation.

CONSTRUCTION NOTES:
(STA. 48+91 to 55+42 See Typ. Detail Sht.)

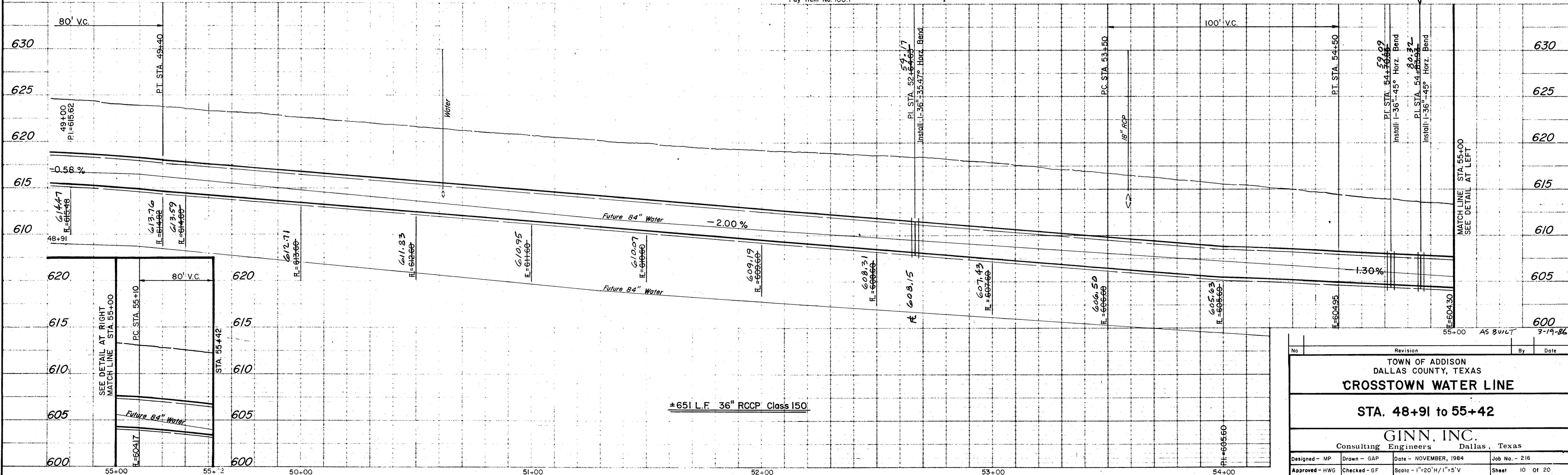
The following notes correspond by station number with the appropriate typical detail drawing.

- Excavate As Required To Construct The Water Line With Appurtenances, As Shown With The Typical Detail Drawing.
- Replace With Fill Material To Match Existing Grades, As Shown With Typical Detail Drawing, Not A Separate Pay Item, Include in Pay Item No. 100.1

NOTE:
Block All Bends, Tees And Plugs As Required By Appurtenances. See Typical Detail Sheet.

STA EQUATION
54+80.32 BACK
54+83.93 FWD

B.M. "□" Plus Mark #19 At Sta. 55+28±
On Celestial Rd. Elev. 614.37



No.	Revision	By	Date
TOWN OF ADDISON DALLAS COUNTY, TEXAS CROSTOWN WATER LINE STA. 48+91 to 55+42 GINN, INC. Consulting Engineers Dallas, Texas			
Designed - MP	Drawn - GAP	Date - NOVEMBER, 1984	Job No. - 216
Approved - HWG	Checked - GF	Scale - 1"=20'H/1"=5'V	Sheet 10 of 20

NOTE:

1. Contractor Shall Determine The Exact Location And Depth Of The Underground Utilities Shown Prior To Construction By Contacting The Utility Companies. The Utility Elevations Shown Are Only Approximate.
2. Contractor Shall Be Responsible For Any Utility Damages Resulting From Construction.
3. Contractor Shall Repair Or Replace Any Damaged Utility Equal To Or Better Than The Original Condition At No Additional Compensation.

CONSTRUCTION NOTES:
(STA. 55+42 to 61+51 See Typ. Detail Sht.)

1. Excavate As Required To Construct The Water Line With Appurtenances, As Shown With The Typical Detail Drawing.
2. Replace With Fill Material To Match Existing Grades, As Shown With Typical Detail Drawing, Not A Separate Pay Item Include In Pay Item No. 101.2

STATION EQUATION:

Water Line Sta. 60+37.63=
Base Line Sta. 60+53.12

PROPOSED 24" RCCP WATER

Pay Item No. 100.2

STA. 58+70
SEE ADDENDUM NO. 2
DRAWING ATTACHED FOR
LIMITS OF CONSTRUCTION.

PI. STA. 59+45.42
Δ = 45°00'00"
Install:
1-24" 45° Horz. Bend
Complete In Place

STA. 59+20±
Install:
1-8" x 12" Conc. Box Vault
3-24" Butterfly Valves
1-24" x 24" Tee

STA. 59+35±
Install:
1-24" x 12" Tee
1-12" Gate Valve w/ Box
Tie To Proposed 12" Water
w/ 12" Ductile Iron Pipe

CAUTION:
18" RCP
Do Not Disturb

PI. STA. 60+67.63
Δ = 17°30'00"
Install:
1-24" 17.5° Horz. Bend
Complete In Place
Welded Joints

STA. 60+48 to
STA. 60+75
1. Saw And Remove Exist. 5" Asphalt.
See Detail Sheet
2. Replace With 5" Thick Asphalt.
See Detail Sheet
Pay Item No. 101.2

PI. STA. 59+73.70
Δ = 46°24'00"
Install:
1-24" 46.40° Horz. Bend
Complete In Place
Welded Joints

Install:
1-36" 45° Horz. Bend

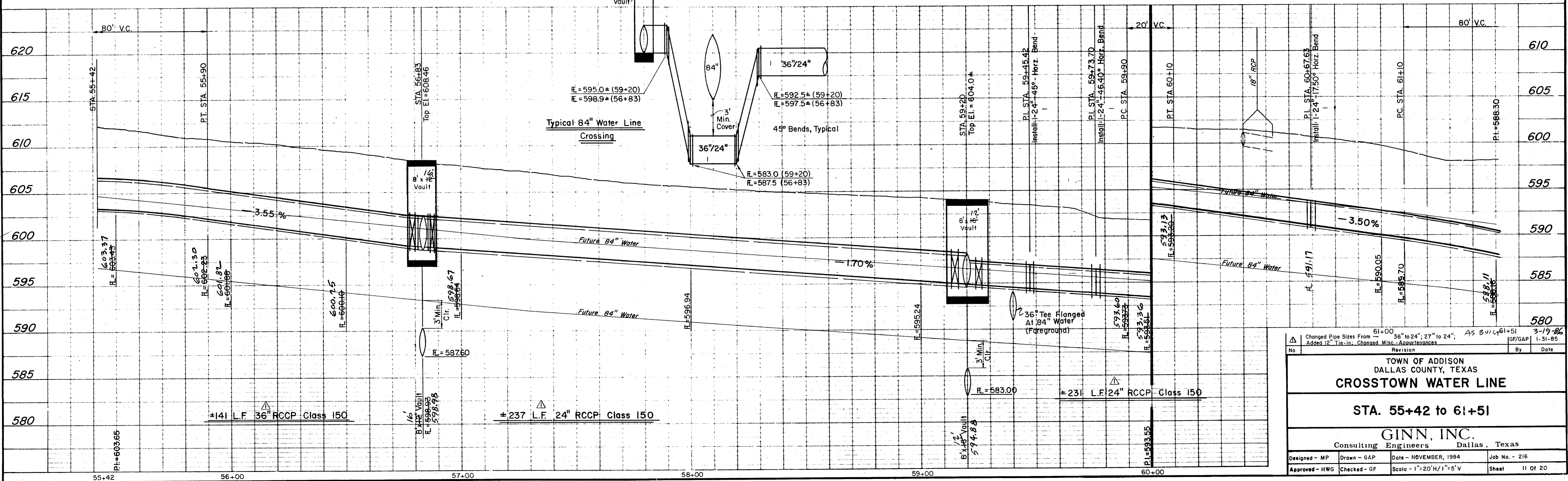
Install:
1-36" 45° Wye

Install:
1-36" Butterfly Valve
Complete In Place
Pay Item No. 102.1

NOTE:

Block All Bends, Tees And Plugs
As Required By Appurtenances.
See Typical Detail Sheet.

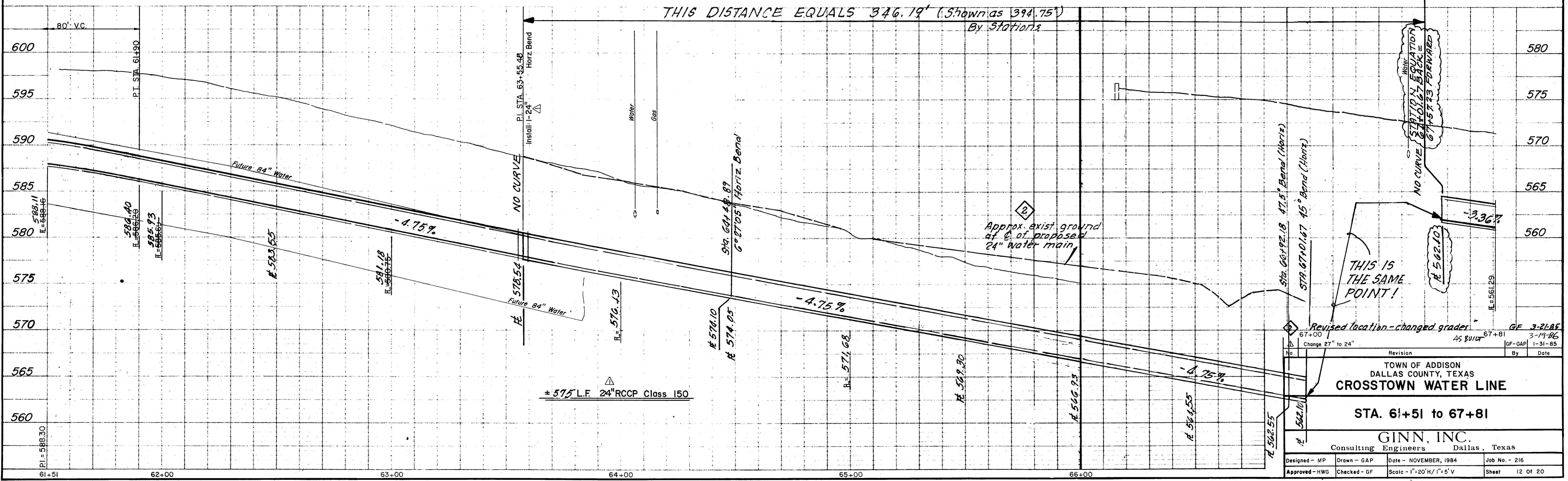
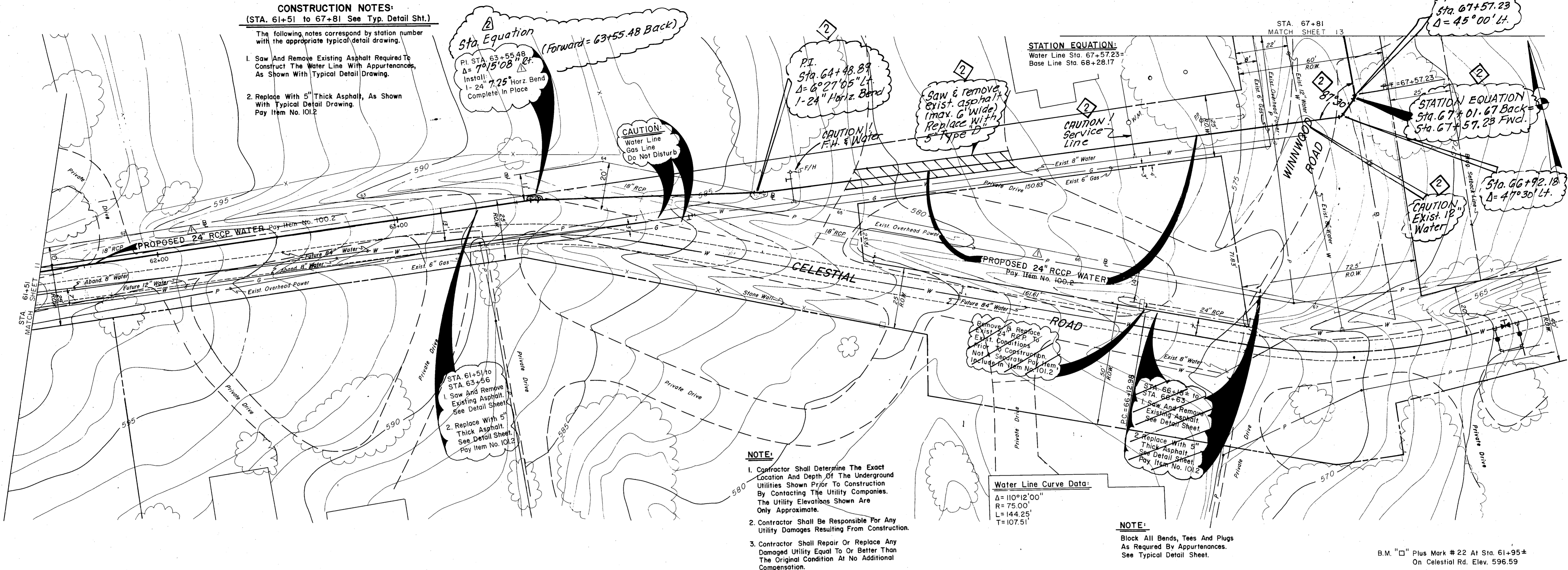
B.M. "□" Plus Mark #20 At Sta. 56+79±
On Celestial Rd. Elev. 607.32



Changed Pipe Sizes From 61+00 36" to 24", 27" to 24", AS BUIL 61+51 3-19-86 Added 12" Tie-in, Changed Misc. Appurtenances		By: Date:
TOWN OF ADDISON DALLAS COUNTY, TEXAS CROSTOWN WATER LINE		
STA. 55+42 to 61+51		
GINN, INC. Consulting Engineers Dallas, Texas		
Designed - MP Drawn - GAP Approved - HWG	Date - NOVEMBER, 1984 Checked - GF Scale - 1"=20'H/1"=5'V	Job No. - 216 Sheet 11 OF 20

CONSTRUCTION NOTES:
(STA. 61+51 to 67+81 See Typ. Detail Sht.)

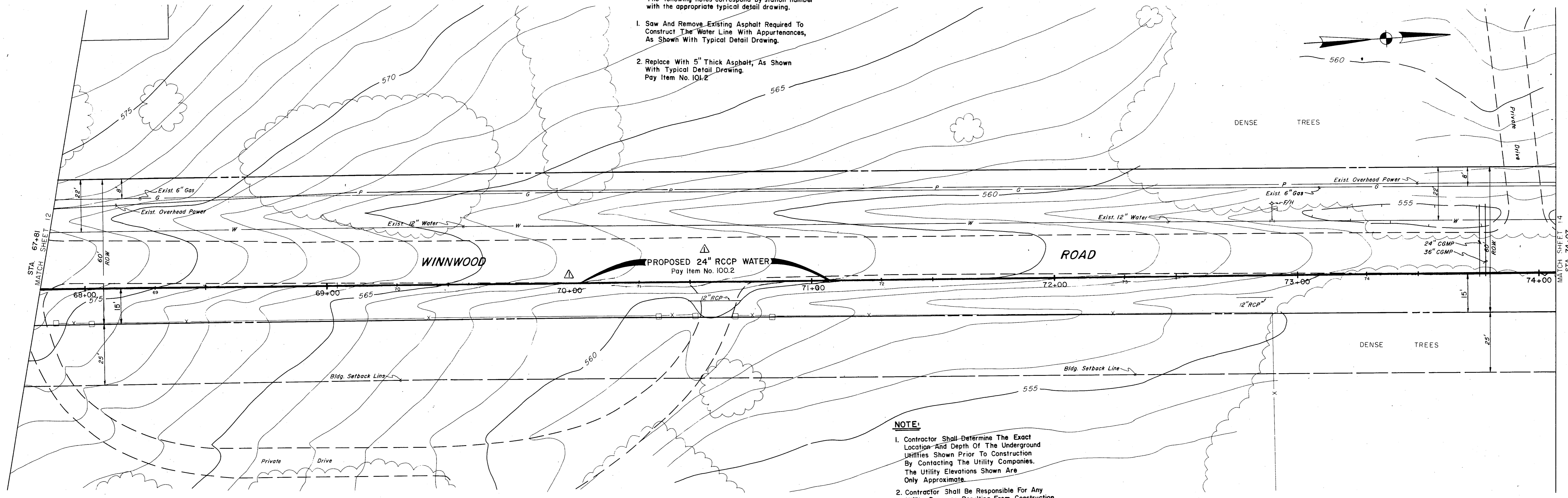
- The following notes correspond by station number with the appropriate typical detail drawing.
1. Saw And Remove Existing Asphalt Required To Construct The Water Line With Appurtenances, As Shown With Typical Detail Drawing.
 2. Replace With 5" Thick Asphalt, As Shown With Typical Detail Drawing. Pay Item No. 101.2



CONSTRUCTION NOTES:
(STA. 67+81 to 74+07 See Typ. Detail Sht.)

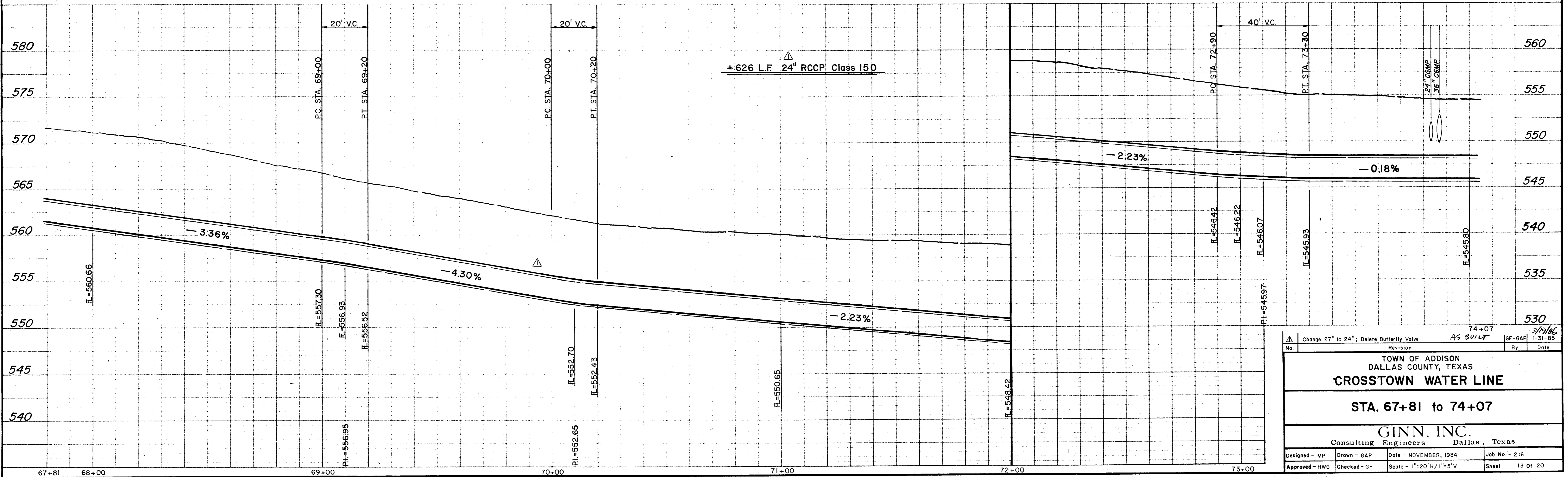
The following notes correspond by station number with the appropriate typical drawing.

1. Saw And Remove Existing Asphalt Required To Construct The Water Line With Appurtenances, As Shown With Typical Detail Drawing.
2. Replace With 5" Thick Asphalt, As Shown With Typical Detail Drawing. Pay Item No. 101.2

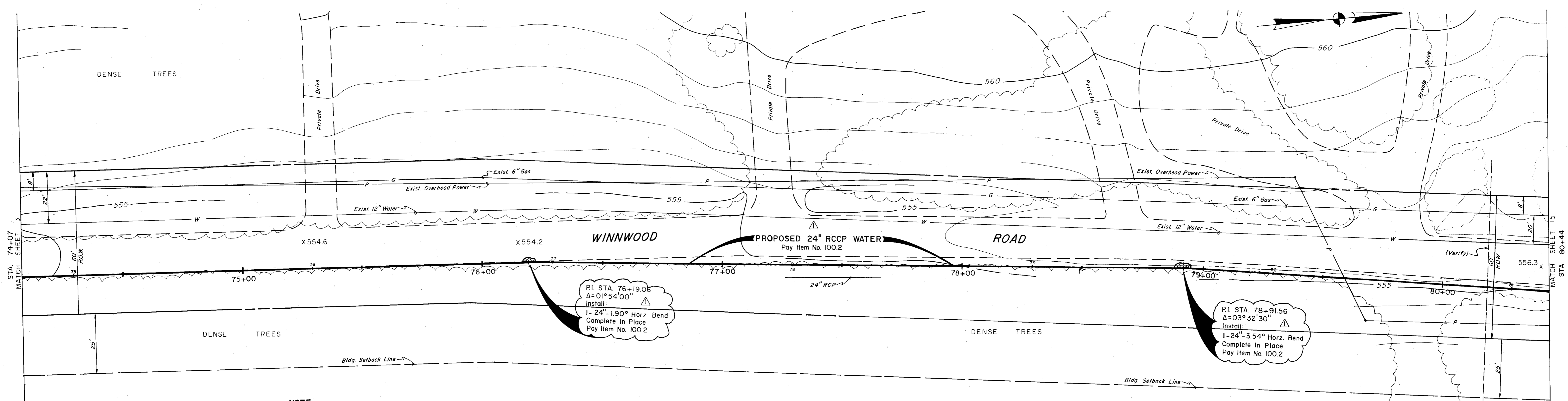


- NOTE:**
1. Contractor Shall Determine The Exact Location And Depth Of The Underground Utilities Shown Prior To Construction By Contacting The Utility Companies. The Utility Elevations Shown Are Only Approximate.
 2. Contractor Shall Be Responsible For Any Utility Damages Resulting From Construction.
 3. Contractor Shall Repair Or Replace Any Damaged Utility Equal To Or Better Than The Original Condition At No Additional Compensation.

B.M. "□" Plus Mark #26 At Sta. 71+00±
On Winnwood Rd. Elev. 559.71



Change 27" to 24"; Delete Butterfly Valve	AS BUILT	By	Date
TOWN OF ADDISON DALLAS COUNTY, TEXAS CROSTOWN WATER LINE			
STA. 67+81 to 74+07			
GINN, INC. Consulting Engineers Dallas, Texas			
Designed - MP	Drawn - GAP	Date - NOVEMBER, 1984	Job No. - 216
Approved - HWG	Checked - GF	Scale - 1"=20' H/1"=5' V	Sheet 13 OF 20



NOTE:

- Contractor Shall Determine The Exact Location And Depth Of The Underground Utilities Shown Prior To Construction By Contacting The Utility Companies. The Utility Elevations Shown Are Only Approximate.
- Contractor Shall Be Responsible For Any Utility Damages Resulting From Construction.
- Contractor Shall Repair Or Replace Any Damaged Utility Equal To Or Better Than The Original Condition At No Additional Compensation.

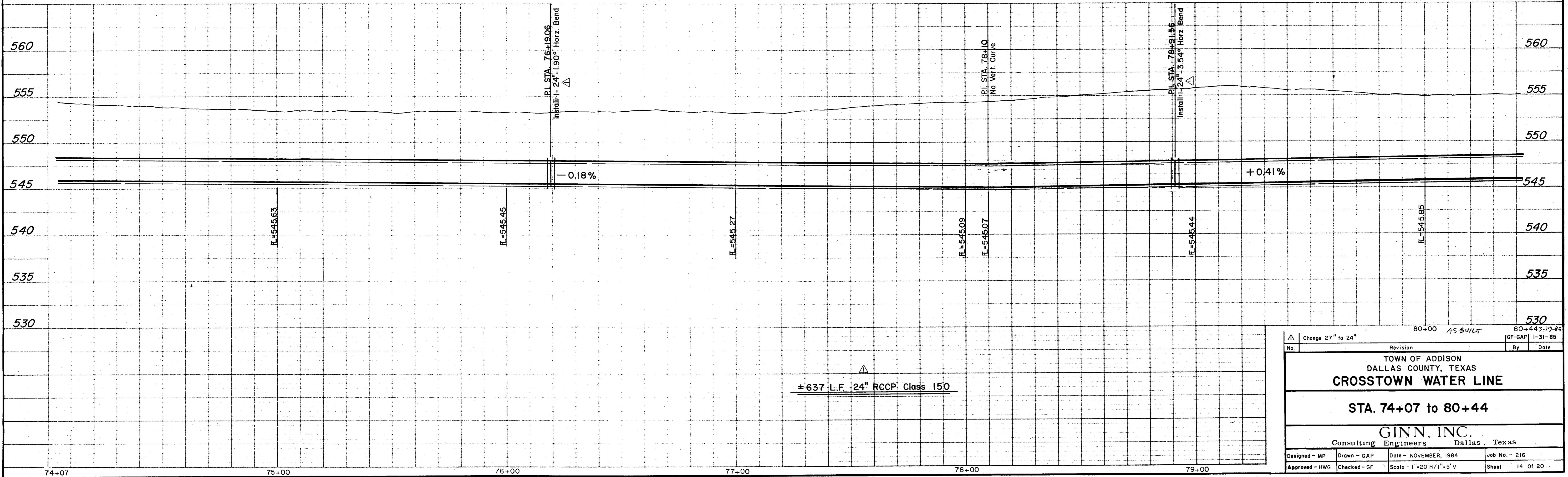
CONSTRUCTION NOTES:
(STA. 74+07 to 80+44 See Typ. Detail Sht.)

- The following notes correspond by station number with the appropriate typical detail drawing.
- Saw And Remove Existing Asphalt Required To Construct The Water Line With Appurtenances, As Shown With Typical Detail Drawing.
 - Replace With 5" Thick Asphalt, As Shown With Typical Detail Drawing. Pay Item No. 101.2

NOTE:

Block All Bends, Tees And Plugs As Required By Appurtenances. See Typical Detail Sheet.

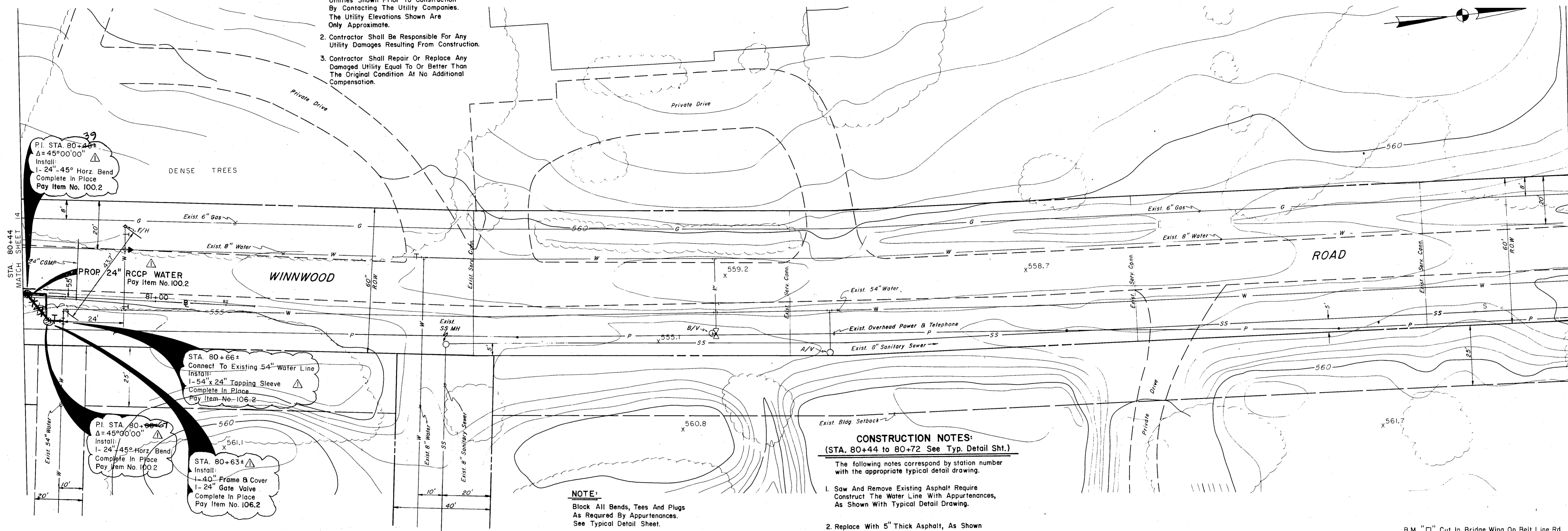
B.M. "□" Plus Mark #26 At Sta. 71+00* On Winnwood Rd. Elev. 559.71



Change 27" to 24"		Revision		By		Date	
TOWN OF ADDISON DALLAS COUNTY, TEXAS CROSTOWN WATER LINE STA. 74+07 to 80+44 GINN, INC. Consulting Engineers Dallas, Texas							
Designed - MP	Drawn - GAP	Date - NOVEMBER, 1984	Job No. - 216		Sheet 14 Of 20		
Approved - HWG	Checked - GF	Scale - 1"=20'H/1"=5'V					

NOTE:

1. Contractor Shall Determine The Exact Location And Depth Of The Underground Utilities Shown Prior To Construction By Contacting The Utility Companies. The Utility Elevations Shown Are Only Approximate.
2. Contractor Shall Be Responsible For Any Utility Damages Resulting From Construction.
3. Contractor Shall Repair Or Replace Any Damaged Utility Equal To Or Better Than The Original Condition At No Additional Compensation.



39
 P.I. STA. 80+40.7
 $\Delta = 45^\circ 00' 00''$
 Install:
 1- 24" 45° Horz. Bend
 Complete In Place
 Pay Item No. 100.2

PROP. 24" RCCP WATER
 Pay Item No. 100.2

STA. 80+66±
 Connect To Existing 54" Water Line
 Install:
 1- 54" x 24" Tapping Sleeve
 Complete In Place
 Pay Item No. 106.2

P.I. STA. 80+60.71
 $\Delta = 45^\circ 00' 00''$
 Install:
 1- 24" 45° Horz. Bend
 Complete In Place
 Pay Item No. 100.2

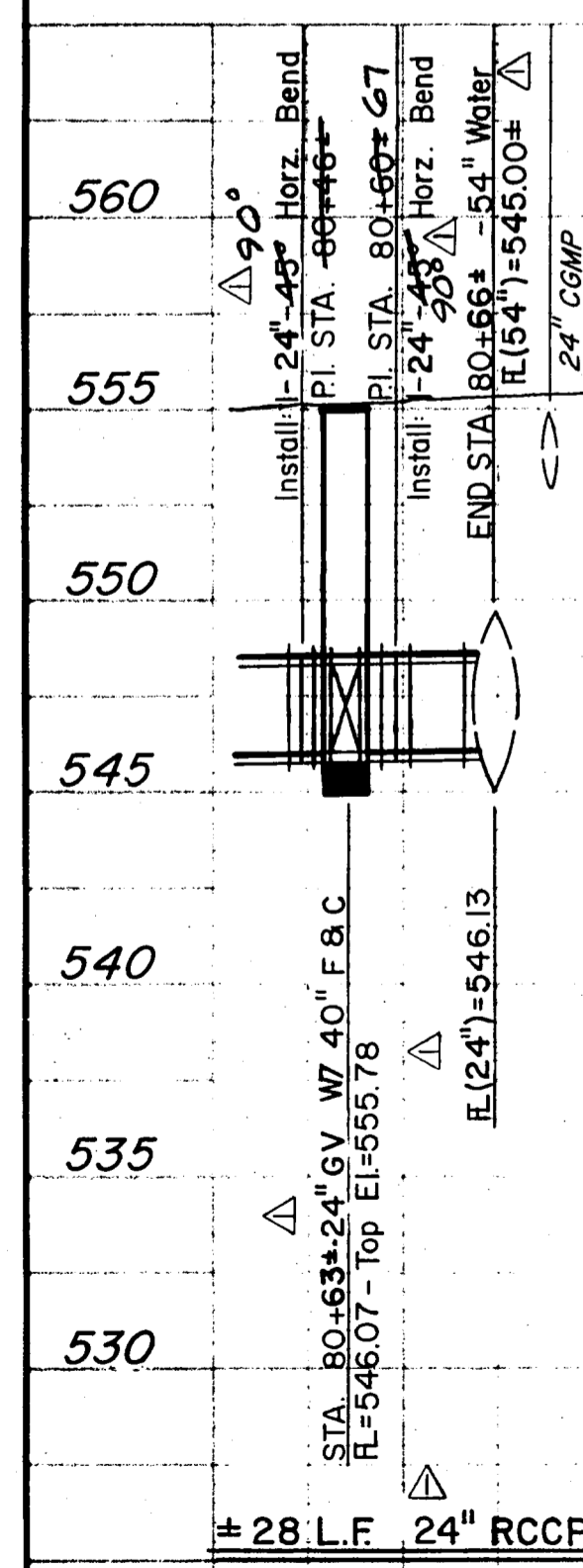
STA. 80+63.4
 Install:
 1- 40" Frame & Cover
 1- 24" Gate Valve
 Complete In Place
 Pay Item No. 106.2

CONSTRUCTION NOTES:
 (STA. 80+44 to 80+72 See Typ. Detail Sht.)

- The following notes correspond by station number with the appropriate typical detail drawing.
1. Saw And Remove Existing Asphalt. Require Construct The Water Line With Appurtenances, As Shown With Typical Detail Drawing.
 2. Replace With 5" Thick Asphalt, As Shown With Typical Detail Drawing.
 Pay Item No. 101.2

NOTE:
 Block All Bends, Tees And Plugs As Required By Appurtenances. See Typical Detail Sheet.

B.M. "C" Cut In Bridge Wing On Belt Line Rd.
 Elev. 563.87



Change 27" to 24" - Used 45° Bends in place of 90° Bends		GF-GAP	3-19-86
No.	Revision	By	Date
TOWN OF ADDISON DALLAS COUNTY, TEXAS CROSSTOWN WATER LINE STA. 80+44 to 80+72 GINN, INC. Consulting Engineers Dallas, Texas			
Designed - MP	Drawn - GAP	Date - NOVEMBER, 1984	Job No. - 216
Approved - HWG	Checked - GF	Scale - 1" = 20' H / 1" = 5' V	Sheet 15 OF 20