

e:\94010.212\sh1\cs10008.040
13 AUG 97
DART.TBL
JAMES LANDRY

9000-100 ON 9AD

SYMBOLS

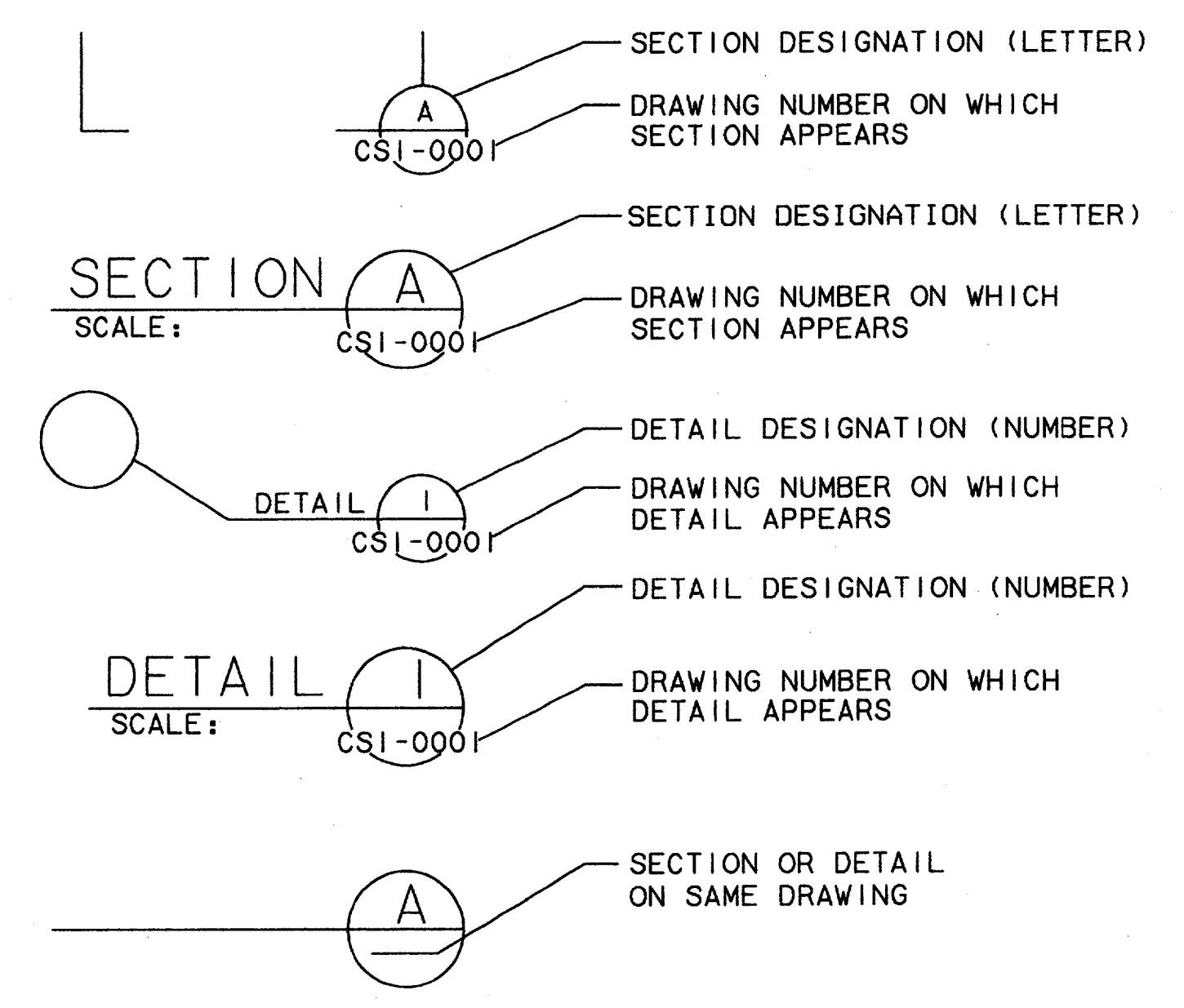
MISCELLANEOUS

EXISTING		PROPOSED
	CONTOUR LINE	
	CENTER OR BASE LINE	
	TRACK (TRANSIT) CENTER LINE	
	FENCE LINE	
	SURFACE FLOW DIRECTION	
	STORM SEWER LINE 24" OR LESS	
	STORM SEWER LINE 24" OR MORE	
	UNDERDRAIN LINE	
	STRUCTURE OUTLINE	
	RAILROAD TRACKS	
	CLEANOUT	
	MANHOLE	
	SIDEWALK AND MISC LINES	
	DROP INLET, CATCH BASIN OR DRAIN	
	CULVERT HEADWALLS	
	SPOT ELEVATION	
	DENOTES SC STATION 926+34.75 ON B LINE	
	DART PRIMARY CONTROL POINT	
	OTHER SURVEY MONUMENTS	
	TEST BORING 18	
	CURB LINE	
	RETAINING WALL	
	GUARD RAIL	
	HAND RAIL	
	TEMPORARY BARRIER	
	GROUND OR GRADE LINE	
	MON. WELL	
	CONCRETE PAVEMENT	
	ASPHALT PAVEMENT	

TRAFFIC CONTROL SYMBOLS

EXISTING		PROPOSED
	TRAFFIC SIGNAL POLE WITH MAST ARM	
	TRAFFIC SIGNAL HEAD	
	TRAFFIC SIGNAL CONTROLLER, BASE MOUNTED	
	TRAFFIC SIGNAL CONTROLLER, POLE MOUNTED	
	SPAN WIRE POLE	
	TRAFFIC PULLBOX	
	PEDESTRIAN SIGNAL	
	LOOP DETECTOR	
	RED LENS	
	YELLOW LENS	
	GREEN LENS	

SECTIONS AND DETAILS



RIGHT-OF-WAY SYMBOLS

EXISTING		PROPOSED
	PARCEL NUMBER	
	COUNTY OF DALLAS BLOCK NUMBER	
	PARCEL OWNERSHIP SAME AS ADJACENT PARCEL	
	DEGREES, MINUTES & SECONDS	
	PROPERTY LINE	
	RIGHT-OF-WAY LINE	
	EASEMENT LINE	
	MUNICIPAL BOUNDARY-CITY/COUNTY	
	PROPERTY/ROW LINE WITH CALLOUT	
	INTERSECTION OF EXISTING PROPERTY LINE	
	INTERSECTION AT PROPOSED PROPERTY LINE (ROW)	

ALIGNMENT AND TRACK SYMBOLS

	CURVE NUMBER
	POINT ON ALIGNMENT
	POINT OF SWITCH
	LEFT HAND LATERAL TURNOUT
	RIGHT HAND LATERAL TURNOUT
	POINT OF INTERSECTION OF TURNOUT
	BUMPING POST
	DOUBLE CROSSOVER

Professional Engineer Seal
 State of Texas
 License No. 10000
 Wendy Lopez
 7-7-99

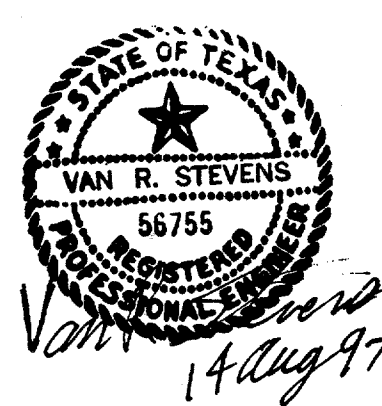
CONFORMED

CONTRACT SHEET No. 6 OF 95

CIVIL STANDARD

SYMBOLS

REV	DATE	DESCRIPTION	BY	ENG	CHK	APP	REV	DATE	DESCRIPTION	BY	ENG	CHK	APP



WENDY LOPEZ & ASSOC.
 LOCKWOOD, ANDREWS & NEWMAN
 THE SWA GROUP
 GERARD & ASSOCIATES
 ZAXON



DART PROJECT

SCALE	NO SCALE
DRAWN	D. KRUCIAK
DESIGNED	P. ZHAO
CHECKED	V. STEVENS
IN CHARGE	V. STEVENS
DATE	14 AUG. 1997

CONTRACT C-97000136 DWG No. GC1-0005 REV 0