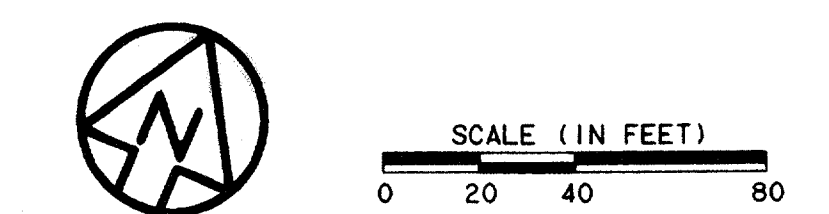
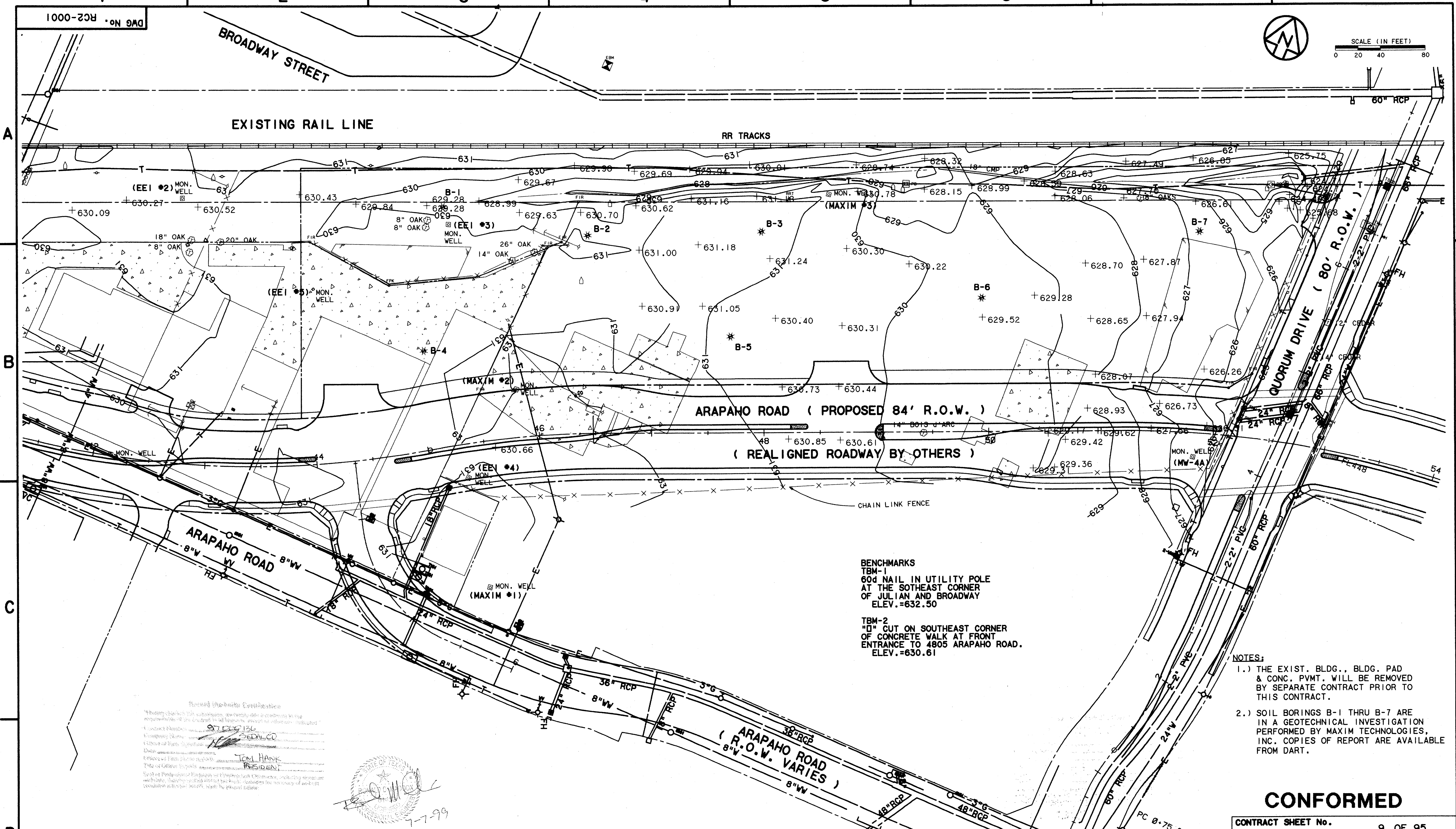


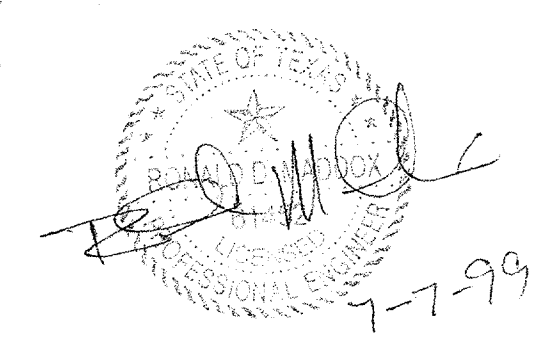
e:\94010.212\shf\abtcop04.040  
 13 AUG 97  
 DART.TBL  
 JAMES LANDRY



**BENCHMARKS**  
 TBM-1  
 60d NAIL IN UTILITY POLE  
 AT THE SOUTHEAST CORNER  
 OF JULIAN AND BROADWAY  
 ELEV.=632.50  
  
 TBM-2  
 "D" CUT ON SOUTHEAST CORNER  
 OF CONCRETE WALK AT FRONT  
 ENTRANCE TO 4805 ARAPAHO ROAD.  
 ELEV.=630.61

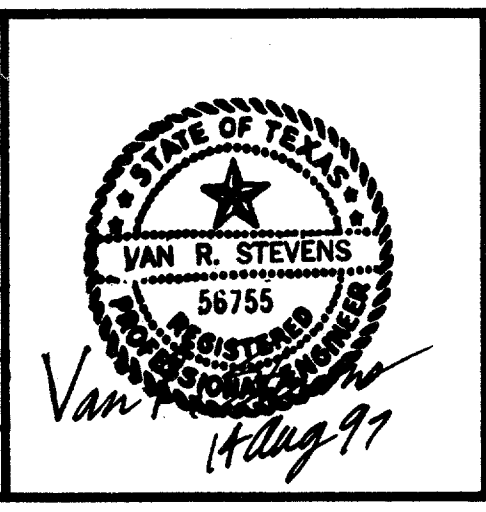
- NOTES:**
- 1.) THE EXIST. BLDG., BLDG. PAD & CONC. PVMT. WILL BE REMOVED BY SEPARATE CONTRACT PRIOR TO THIS CONTRACT.
  - 2.) SOIL BORINGS B-1 THRU B-7 ARE IN A GEOTECHNICAL INVESTIGATION PERFORMED BY MAXIM TECHNOLOGIES, INC. COPIES OF REPORT ARE AVAILABLE FROM DART.

Surveyed & Certified  
 I hereby certify that the information furnished on this plan is true and correct to the best of my knowledge and belief, and that I am a duly Licensed Professional Engineer in the State of Texas.  
 JAMES LANDRY  
 LICENSE NO. 136  
 REGISTERED PROFESSIONAL ENGINEER  
 STATE OF TEXAS  
 JAMES LANDRY  
 PRESIDENT



**CONFORMED**  
 CONTRACT SHEET No. 9 OF 95

REV	DATE	DESCRIPTION	BY	ENG	CHK	APP	REV	DATE	DESCRIPTION	BY	ENG	CHK	APP
△							△						
△							△						
△							△						
△							△						
△							△						



WENDY LOPEZ & ASSOC.  
 LOCKWOOD, ANDREWS & NEWNAM  
 THE SWA GROUP  
 GERARD & ASSOCIATES  
 ZAXON

**WLA**  
 WENDY LOPEZ & ASSOCIATES, INC.  
 ENGINEERING & SURVEYING & CONSTRUCTION SERVICES  
 205 MARKET CENTER BLVD - SUITE 200  
 DALLAS, TEXAS 75201  
 (214) 748-7777

**DART PROJECT**

SCALE 1"=40'  
 DRAWN D. KRUCIAK  
 DESIGNED P. ZHAO  
 CHECKED V. STEVENS  
 IN CHARGE V. STEVENS  
 DATE 14 AUG. 1997

**ADDISON TRANSIT CENTER EXISTING TOPOGRAPHIC PLAN**  
 CONTRACT C-97000136  
 DWG No. RC2-0001  
 REV 0