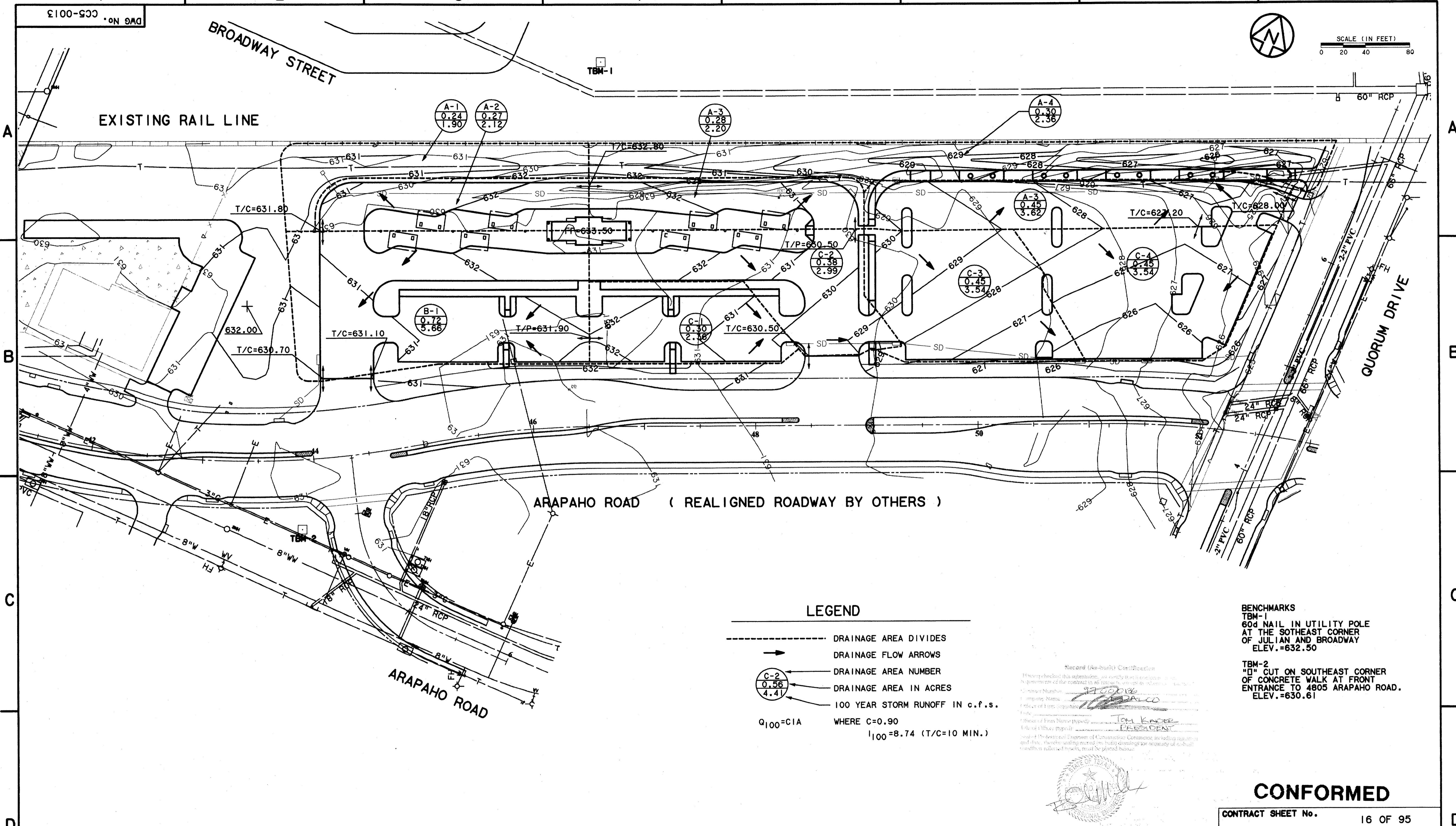
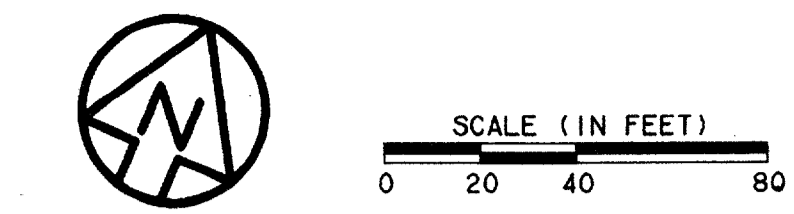


c:\cadd\94010.2\12\shf\abtdca01.0
 02 MAR 98
 DART.TBL
 \$(USER)

DWG No. CC5-0013



LEGEND

- DRAINAGE AREA DIVIDES
- DRAINAGE FLOW ARROWS
- C-2
0.56
4.41 DRAINAGE AREA NUMBER
- C-2
0.56
4.41 DRAINAGE AREA IN ACRES
- Q₁₀₀=CIA WHERE C=0.90
- I₁₀₀=8.74 (T/C=10 MIN.)

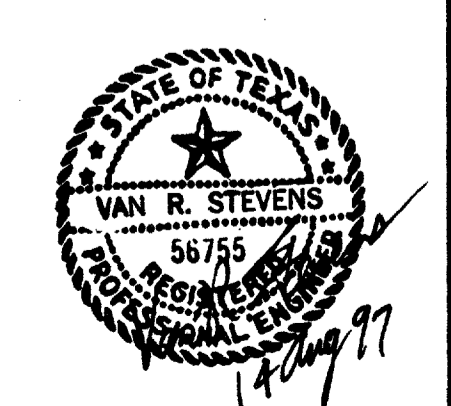
Record (As-built) Certification
 I have checked this submission, as certified by a professional engineer, and find it to be correct and in accordance with the contract documents. I hereby certify that the work shown on this drawing was done in accordance with the contract documents and the laws and regulations of the State of Texas.
 Date: 8/14/97
 Signature: [Signature]
 Title: [Title]
 Seal: [Seal]

BENCHMARKS
 TBM-1
 60" NAIL IN UTILITY POLE
 AT THE SOUTHEAST CORNER
 OF JULIAN AND BROADWAY
 ELEV. = 632.50
 TBM-2
 "I" CUT ON SOUTHEAST CORNER
 OF CONCRETE WALK AT FRONT
 ENTRANCE TO 4805 ARAPAHO ROAD.
 ELEV. = 630.61

CONFORMED

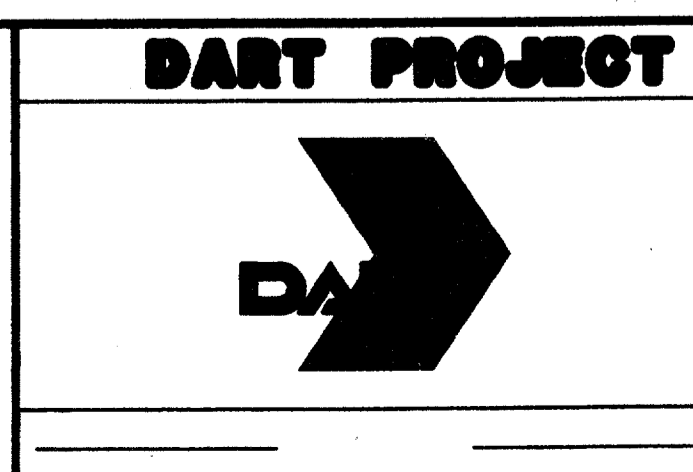
CONTRACT SHEET No. 16 OF 95

REV	DATE	DESCRIPTION	BY	ENG	CHK	APP	REV	DATE	DESCRIPTION	BY	ENG	CHK	APP



WENDY LOPEZ & ASSOC.
 LOCKWOOD, ANDREWS & NEWNAM
 THE SWA GROUP
 GERARD & ASSOCIATES
 ZAXON

WLA
 WENDY LOPEZ & ASSOCIATES, INC.
 ENGINEERING • SURVEYING • CONSTRUCTION SERVICES
 185 MARKET CENTER BLVD - SUITE 300
 DALLAS, TEXAS 75207
 (214) 748-7777



SCALE 1"=40'
 DRAWN D. KRUCIAK
 DESIGNED P. ZHAO
 CHECKED V. STEVENS
 IN CHARGE V. STEVENS
 DATE AUG. 14, 1997

**ADDISON
 TRANSIT CENTER
 DRAINAGE AREA MAP**

CONTRACT C-97000136 DWG No. CC5-0013 REV 0