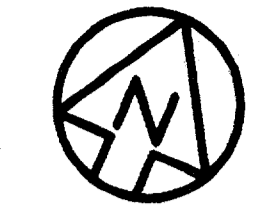
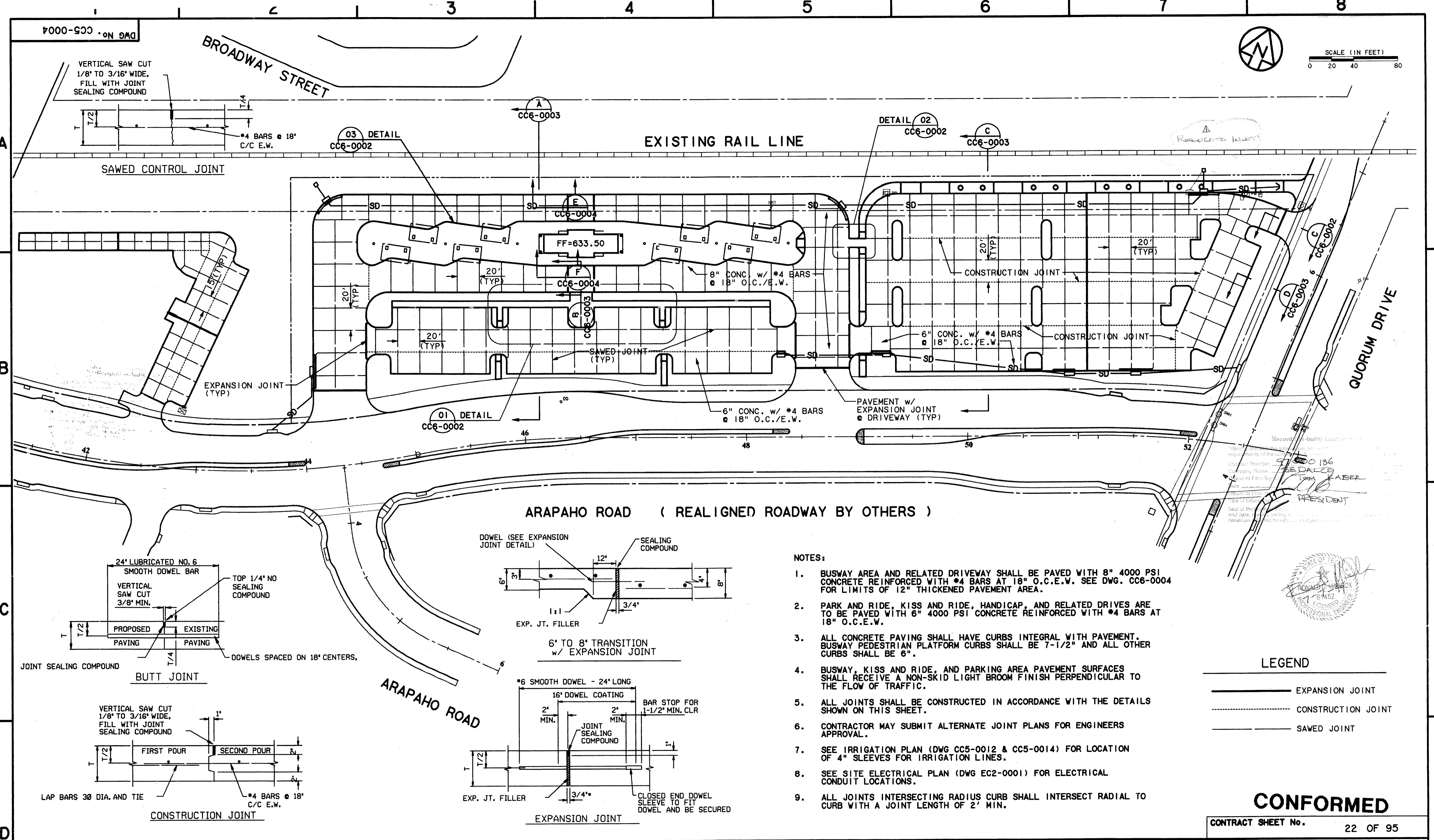


c:\cadd\94010.2\12\sh\abtcz01.  
02 MAR 98  
DART.TBL  
\$(USER)



SCALE (IN FEET)  
0 20 40 80

**NOTES:**

- BUSWAY AREA AND RELATED DRIVEWAY SHALL BE PAVED WITH 8" 4000 PSI CONCRETE REINFORCED WITH #4 BARS AT 18" O.C.E.W. SEE DWG. CC6-0004 FOR LIMITS OF 12" THICKENED PAVEMENT AREA.
- PARK AND RIDE, KISS AND RIDE, HANDICAP, AND RELATED DRIVES ARE TO BE PAVED WITH 6" 4000 PSI CONCRETE REINFORCED WITH #4 BARS AT 18" O.C.E.W.
- ALL CONCRETE PAVING SHALL HAVE CURBS INTEGRAL WITH PAVEMENT. BUSWAY PEDESTRIAN PLATFORM CURBS SHALL BE 7-1/2" AND ALL OTHER CURBS SHALL BE 6".
- BUSWAY, KISS AND RIDE, AND PARKING AREA PAVEMENT SURFACES SHALL RECEIVE A NON-SKID LIGHT BROOM FINISH PERPENDICULAR TO THE FLOW OF TRAFFIC.
- ALL JOINTS SHALL BE CONSTRUCTED IN ACCORDANCE WITH THE DETAILS SHOWN ON THIS SHEET.
- CONTRACTOR MAY SUBMIT ALTERNATE JOINT PLANS FOR ENGINEERS APPROVAL.
- SEE IRRIGATION PLAN (DWG CC5-0012 & CC5-0014) FOR LOCATION OF 4" SLEEVES FOR IRRIGATION LINES.
- SEE SITE ELECTRICAL PLAN (DWG EC2-0001) FOR ELECTRICAL CONDUIT LOCATIONS.
- ALL JOINTS INTERSECTING RADIUS CURB SHALL INTERSECT RADIAL TO CURB WITH A JOINT LENGTH OF 2' MIN.

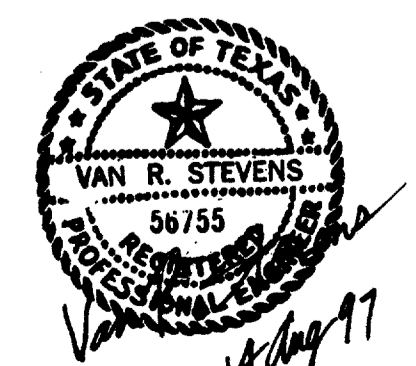
**LEGEND**

- EXPANSION JOINT
- - - CONSTRUCTION JOINT
- SAWED JOINT

**CONFORMED**

CONTRACT SHEET No. 22 OF 95

REV	DATE	DESCRIPTION	BY	ENG	CHK	APP	REV	DATE	DESCRIPTION	BY	ENG	CHK	APP



WENDY LOPEZ & ASSOC.  
LOCKWOOD, ANDREWS & NEWMAN  
THE SWA GROUP  
GERARD & ASSOCIATES  
ZAXON



**DART PROJECT**



SCALE 1"=40'  
DRAWN D. KRUCIAK  
DESIGNED P. ZHAO  
CHECKED V. STEVENS  
IN CHARGE V. STEVENS  
DATE AUG. 14, 1997

**ADDISON TRANSIT CENTER PAVEMENT JOINT LAYOUT**

CONTRACT C-97000136 DWG No. CC5-0004 REV 0