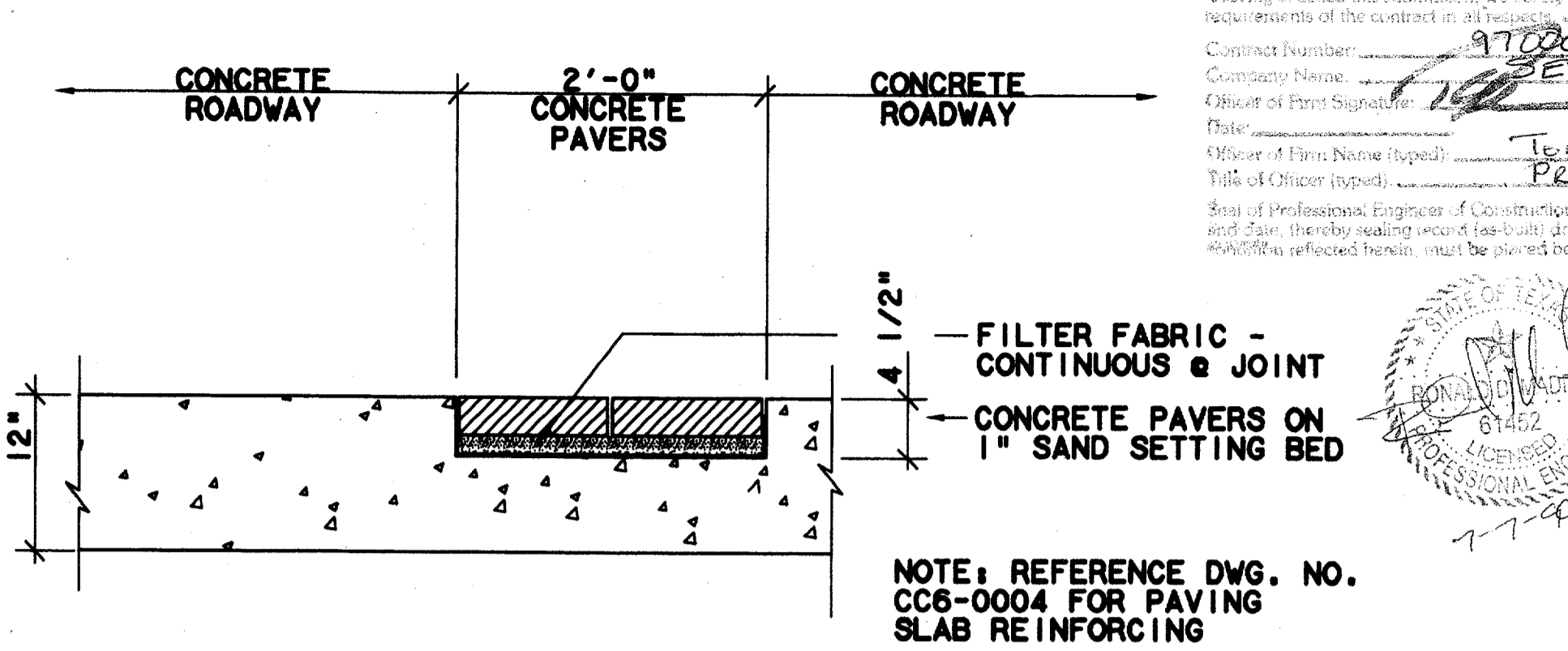
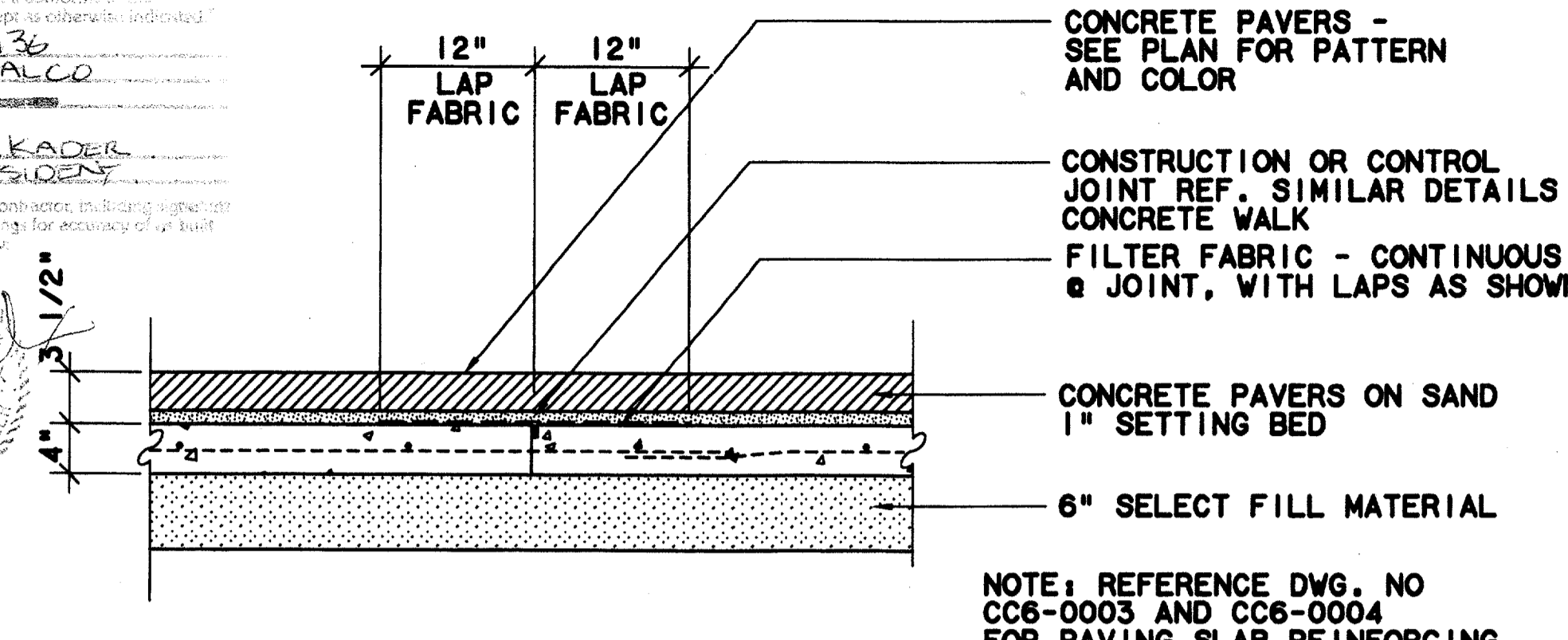


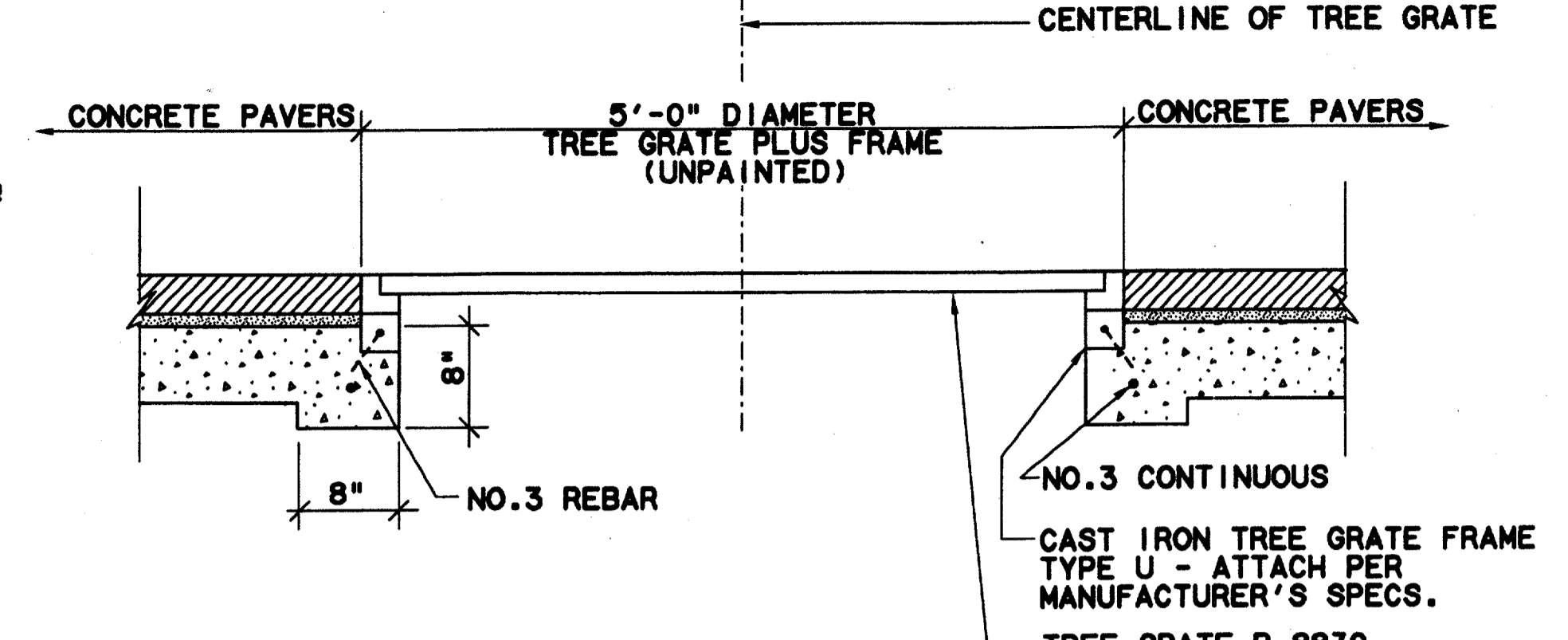
Record (As-built) Certification
 "Having checked the submission, we certify that it conforms to the requirements of the contract in all respects, except as otherwise indicated."
 Contract Number: 9700136
 Company Name: SEDALCO
 Date: 11/14/97
 Name of Firm (Typed): SEDALCO
 Title of Officer (Typed): PRESIDENT
 Seal of Professional Engineer of Construction Contracting, State of Texas, No. 11199, expires 11/14/98, hereby reading record of as-built drawings for accuracy of as-built drawings reflected herein, must be placed below.



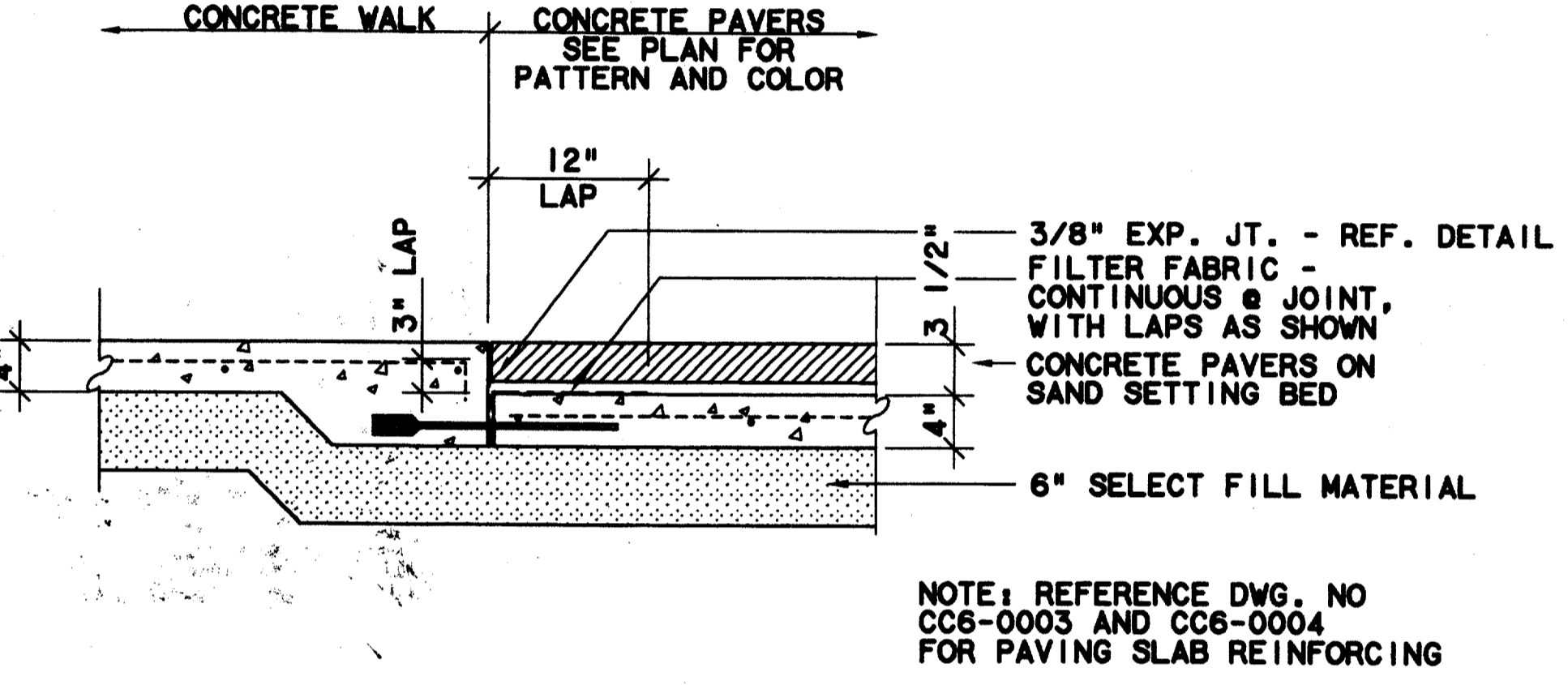
PAVER INSET @ ROADWAY - SECTION
 SCALE: 1"=1'-0"
 7
 CC5-0009
 CC5-0010



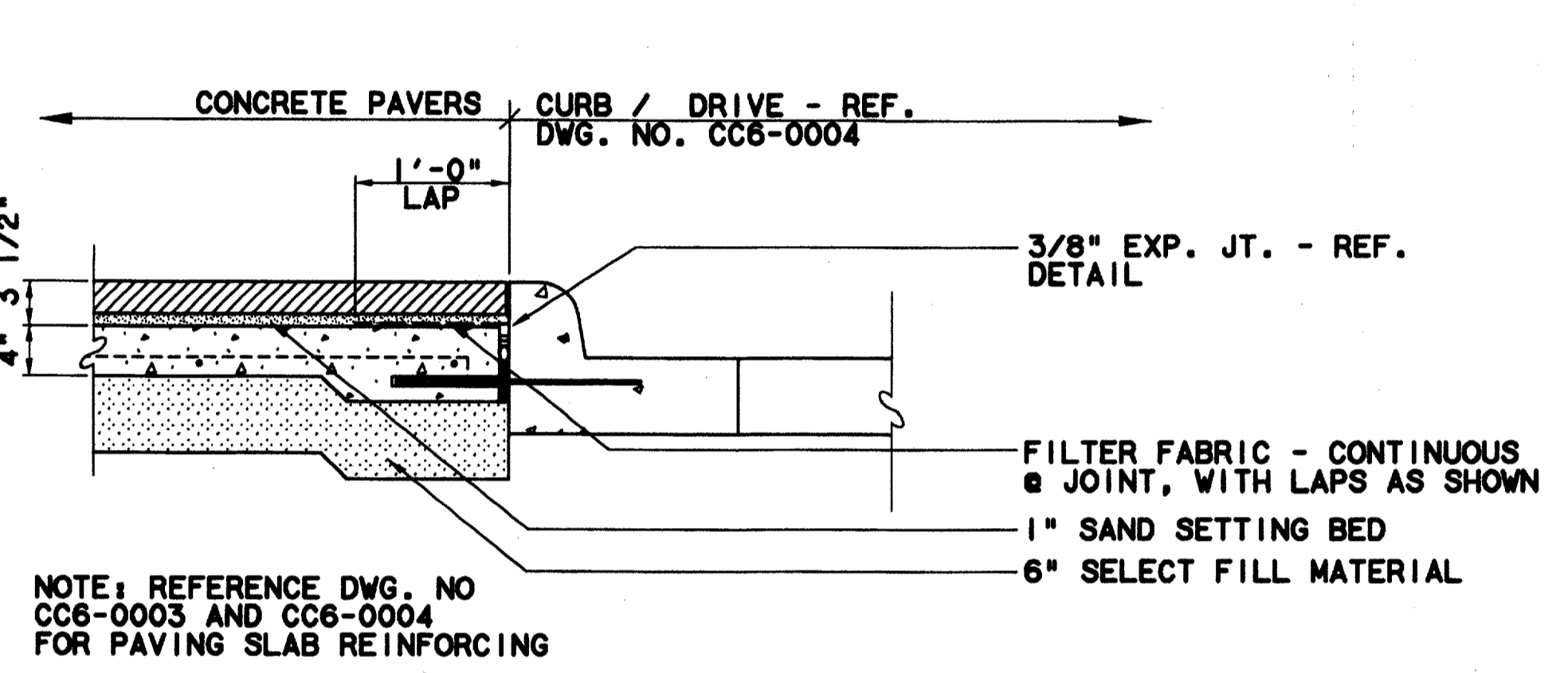
PAVERS OVER CONTROL JOINT - SECTION
 SCALE: 1"=1'-0"
 4
 CC5-0008



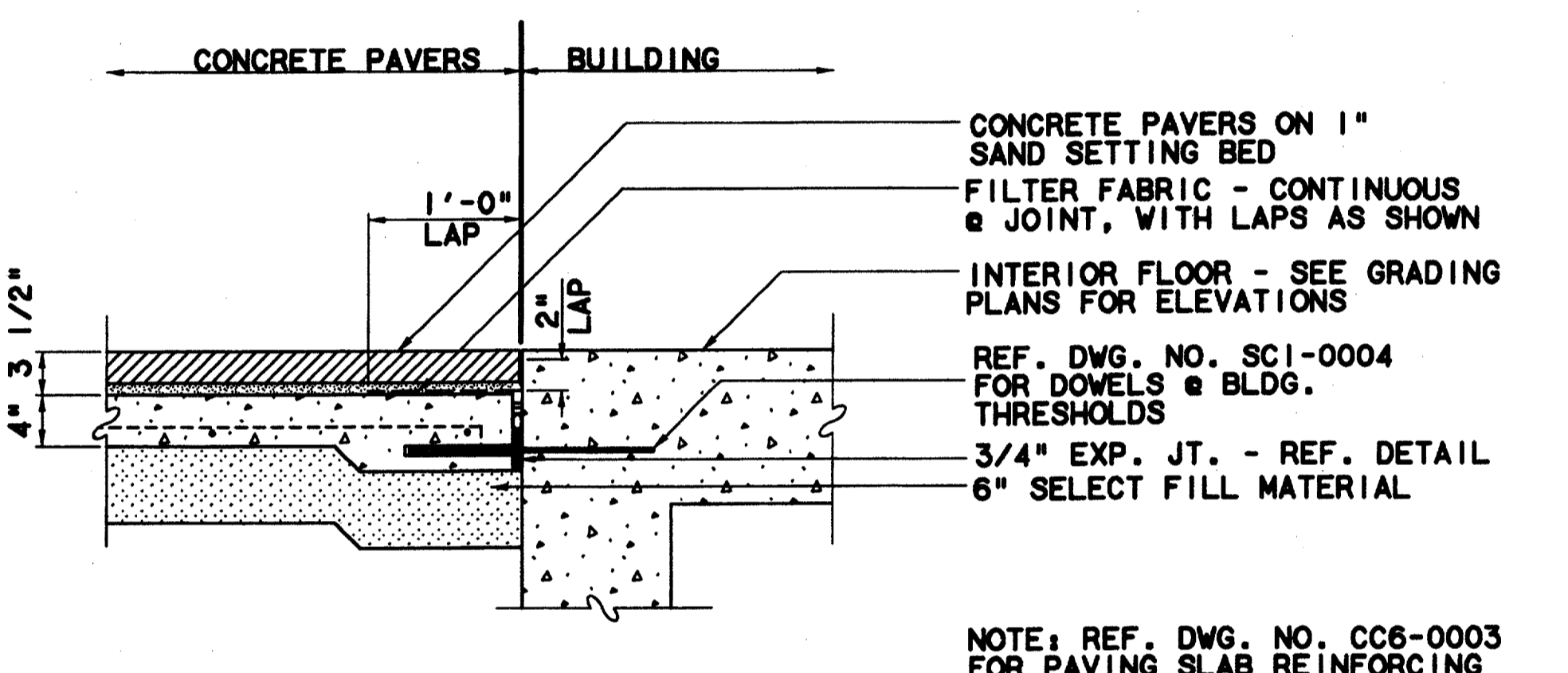
PAVERS @ TREE GRATE - SECTION
 SCALE: 1"=1'-0"
 1
 CC5-0009



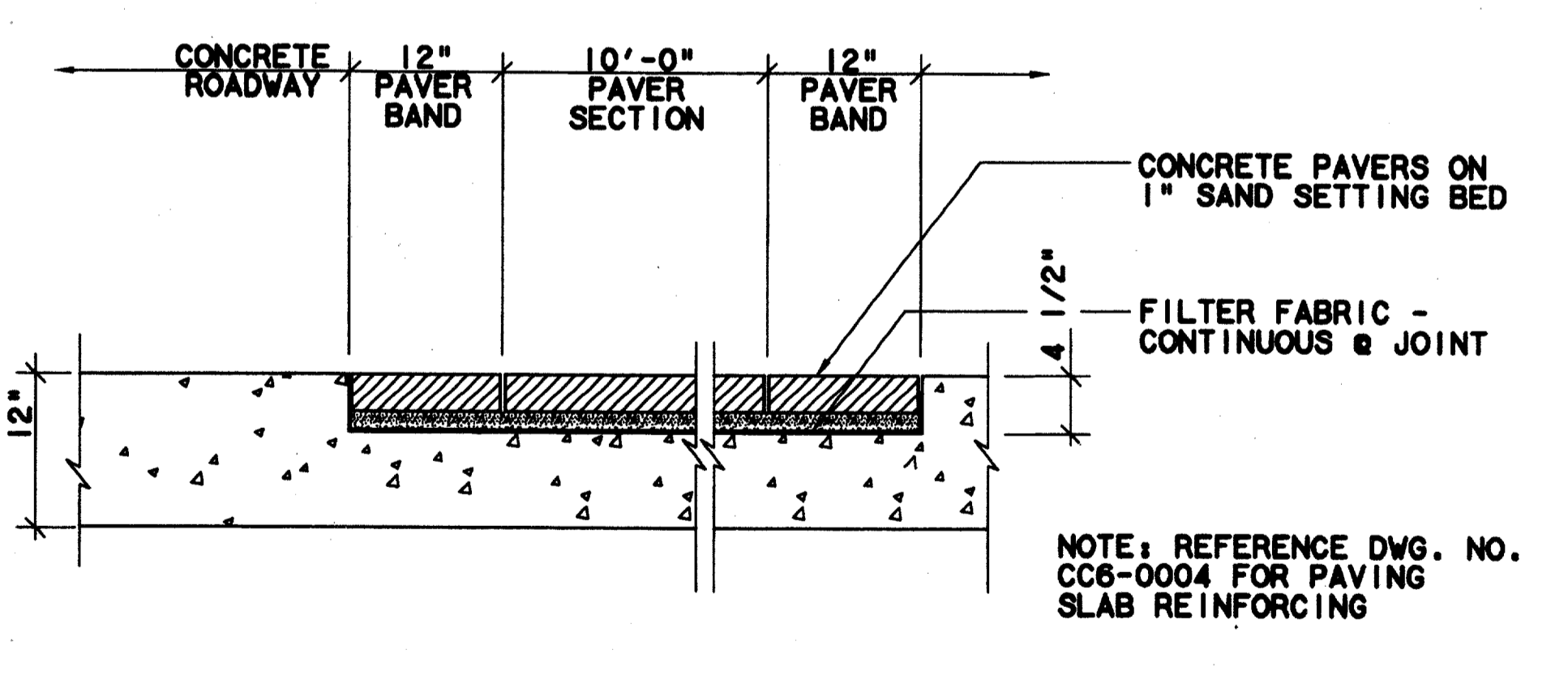
PAVERS @ CONCRETE WALK - SECTION
 SCALE: 1"=1'-0"
 8
 CC5-0009
 CC5-0010



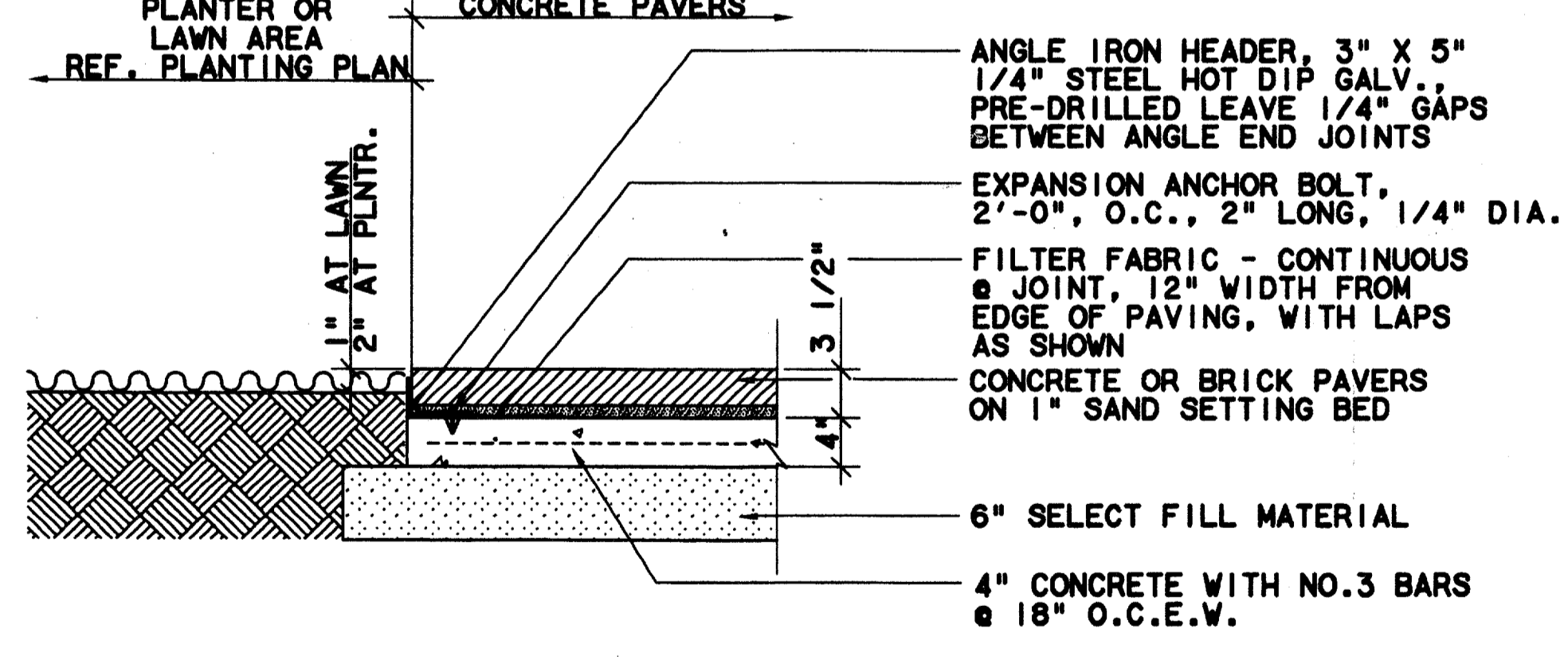
PAVERS @ CURB - SECTION
 SCALE: 1"=1'-0"
 5
 CC5-0009



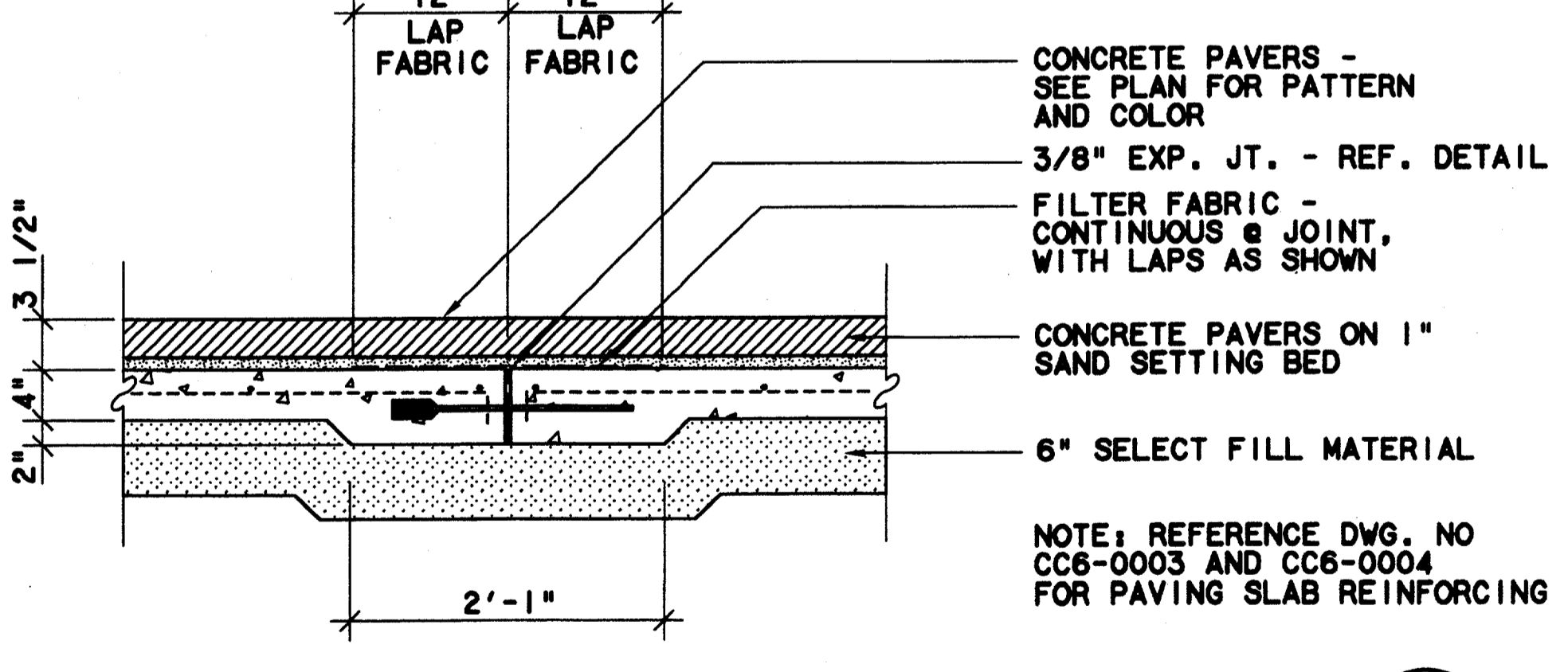
PAVERS @ BUILDING - SECTION
 SCALE: 1"=1'-0"
 2
 CC5-0009



PAVER INSET @ ROADWAY - CONCRETE SECTION
 SCALE: 1"=1'-0"
 9
 CC5-0010



PAVERS @ PLANTER - SECTION
 SCALE: 1"=1'-0"
 6
 CC5-0009
 CC5-0010



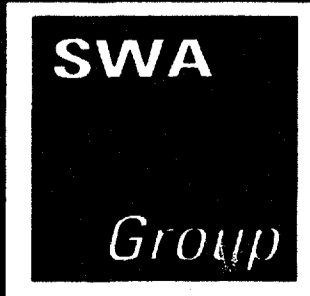
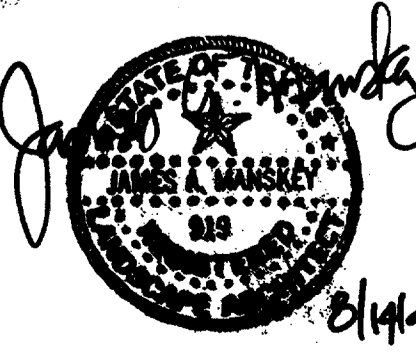
PAVERS OVER EXPANSION JOINT - SECTION
 SCALE: 1"=1'-0"
 3
 CC5-0008

CONFORMED

CONTRACT SHEET No. 47 OF 95

ADDISON
 TRANSIT CENTER
 HARDSCAPE DETAILS

REV	DATE	DESCRIPTION	BY	ENG	CHK	APP	REV	DATE	DESCRIPTION	BY	ENG	CHK	APP

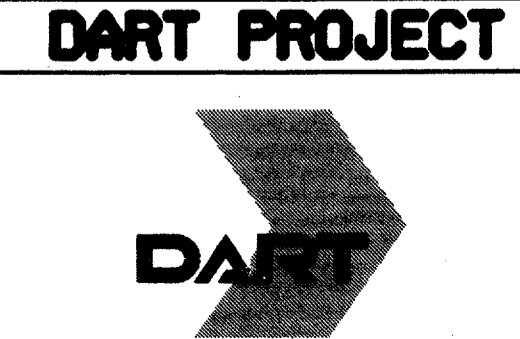


2211 North Lamar
 Dallas, Texas 75202
 214-654-0016

Landscape Architecture
 Site Planning
 Urban Design



WENDY LOPEZ & ASSOCIATES, INC.
 ENGINEERING • SURVEYING • CONSTRUCTION SERVICES
 1825 MARKET CENTER BLVD - SUITE 510
 DALLAS, TEXAS 75207
 (214) 746-7777



SCALE	AS NOTED
DRAWN	N. AVETON
DESIGNED	C. MILLER
CHECKED	C. MILLER
IN CHARGE	V. STEVENS
DATE	14 AUGUST 97



CONTRACT C-97000136

DWG No. LC2-0001

REV 0