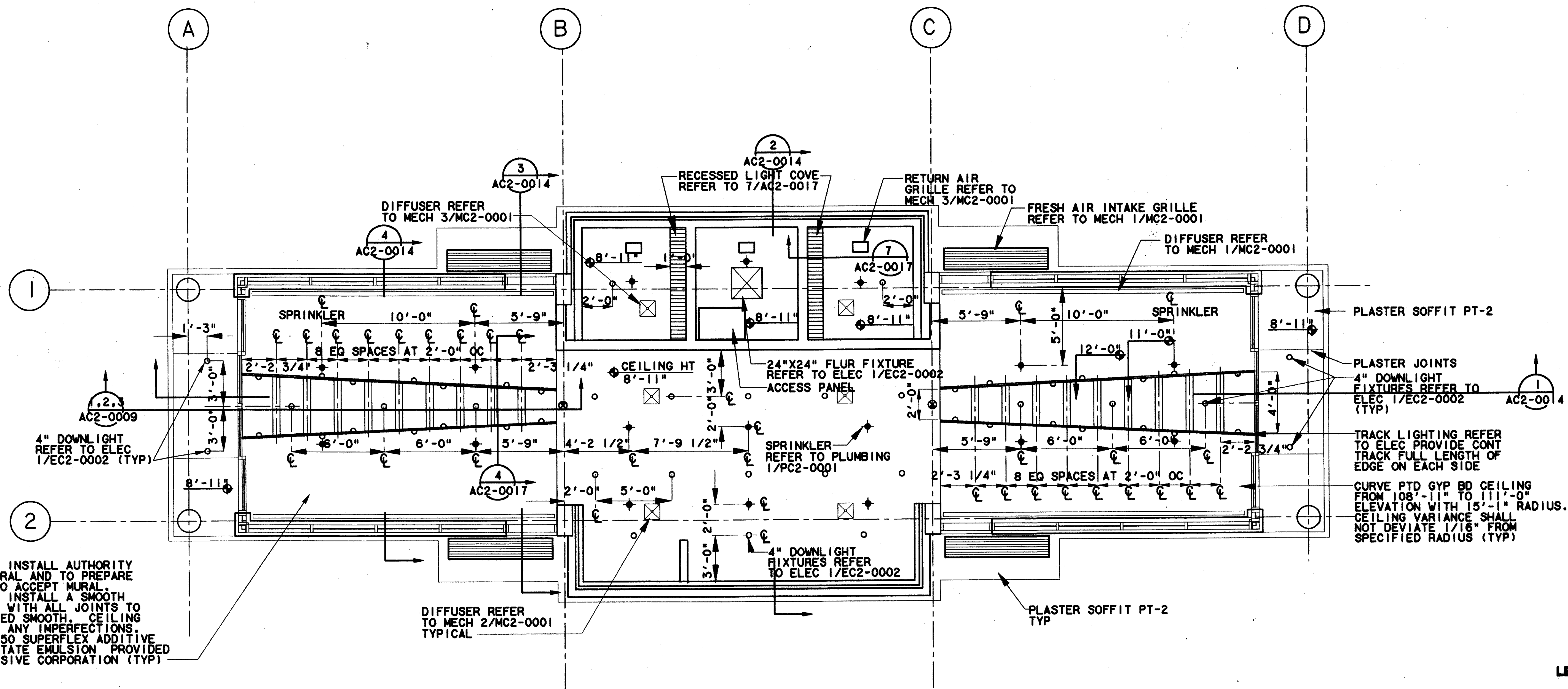
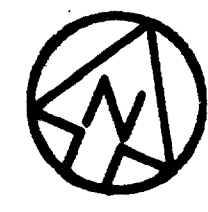


\$\$\$SYTIME\$\$\$\$  
 \$\$\$PRF\$\$\$  
 \$\$\$SERNAME\$\$\$  
 \$\$\$PRF ROT\$\$\$  
 \$\$\$PEN\$\$\$  
 \$\$\$ILE6\$\$\$  
 \$\$\$ILE7\$\$\$  
 \$\$\$ILE8\$\$\$  
 \$\$\$ILE9\$\$\$  
 \$\$\$ILE10\$\$\$  
 \$\$\$ILE1\$\$\$  
 \$\$\$ILE2\$\$\$  
 \$\$\$ILE3\$\$\$  
 \$\$\$ILE4\$\$\$  
 \$\$\$ILE5\$\$\$

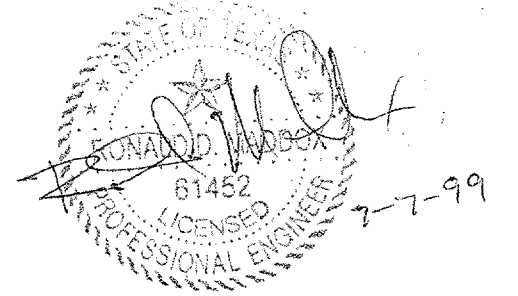
9000-23V ON 9AG



CONTRACTOR TO INSTALL AUTHORITY  
 FURNISHED MURAL AND TO PREPARE  
 GYP CEILING TO ACCEPT MURAL.  
 CONTRACTOR TO INSTALL A SMOOTH  
 CURVE CEILING WITH ALL JOINTS TO  
 BE TAPED SANDED SMOOTH. CEILING  
 TO BE FREE OF ANY IMPERFECTIONS.  
 USE EVANS 00450 SUPERFLEX ADDITIVE  
 POLYVINYL ACETATE EMULSION PROVIDED  
 BY EVANS ADHESIVE CORPORATION (TYP)

**REFLECTED CEILING PLAN**  
SCALE: 1/4" = 1'-0"

Record (As-Built) Certification  
 Having checked this submission, we certify that it conforms to the  
 requirements of the contract in all respects, except as otherwise indicated.  
 Contract Number: 97000136  
 Company Name: WEA  
 Officer of Firm Signature: [Signature]  
 Date: 7-7-99  
 Officer of Firm Name (typed): ILM KADEL  
 Title of Officer (typed): PRESIDENT  
 Seal of Professional Engineer of Construction Contractors, including signature  
 and date, thereby sealing record (as-built) drawings for accuracy of as-built  
 conditions reflected herein, must be placed below.

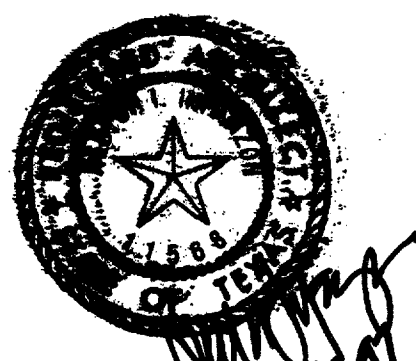


- LEGEND:**
- DIFFUSER
  - RETURN AIR
  - FRESH AIR INTAKE
  - DIFFUSER
  - SPRINKLER HEAD
  - LIGHT COVE
  - DOWNLIGHT
  - 2'X2' FLUORESCENT FIXTURE
  - TRACK LIGHTING
  - EXIT LIGHTING

**CONFORMED**

CONTRACT SHEET No. 58 OF 95

REV	DATE	DESCRIPTION	BY	ENG	CHK	APP	REV	DATE	DESCRIPTION	BY	ENG	CHK	APP



**Lockwood, Andrews & Newnam, Inc.**  
 A SUBSIDIARY OF LEO A DALY

**WLA**  
**WENDY LOPEZ & ASSOCIATES, INC.**  
 ENGINEERING - SURVEYING - CONSTRUCTION SERVICES  
 185 MARKET CENTER BLVD - SUITE 50  
 DALLAS, TEXAS 75201  
 (214) 746-7777

**DART PROJECT**

SCALE: 1/4" = 1'-0"  
 DRAWN: K. DEAN  
 DESIGNED: N. INFANZON/K. DEAN  
 CHECKED: N. INFANZON/RON BOLTON  
 IN CHARGE: V. STEVENS  
 DATE: 14 AUGUST 97

**ADDISON  
 TRANSIT CENTER  
 ENCLOSURE REFLECTED  
 CEILING PLAN**

CONTRACT C-97000136    DWG No. AC2-0006    REV 0