

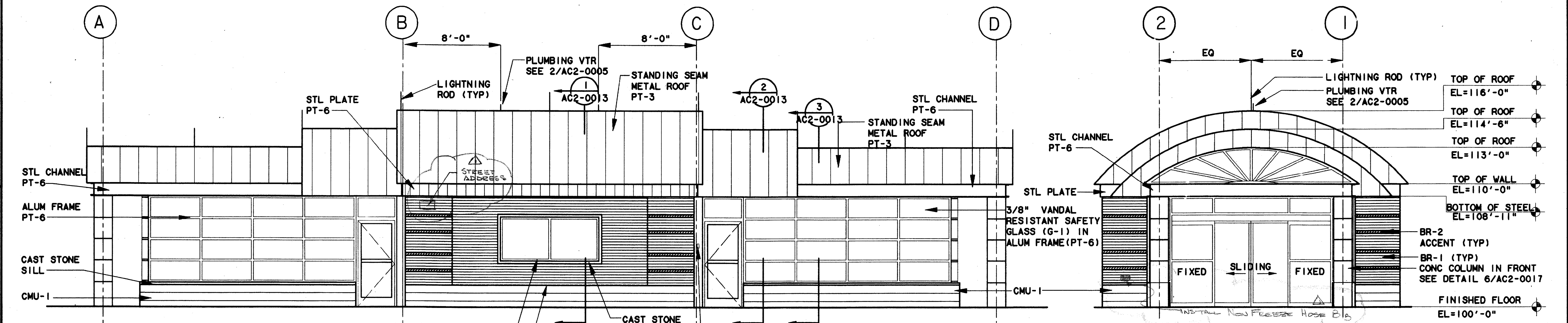
1000-23V ON 9AD  
 \$\$\$SYTIME\$\$\$  
 \$\$\$PRF\$\$\$  
 \$\$\$USERNAME\$\$\$

\$\$\$PRF ROT\$\$\$  
 \$\$\$PEN\$\$\$

\$\$\$FILE6\$\$\$  
 \$\$\$FILE7\$\$\$  
 \$\$\$FILE8\$\$\$  
 \$\$\$FILE9\$\$\$  
 \$\$\$FILE10\$\$\$

\$\$\$FILE1\$\$\$  
 \$\$\$FILE2\$\$\$  
 \$\$\$FILE3\$\$\$  
 \$\$\$FILE4\$\$\$  
 \$\$\$FILE5\$\$\$

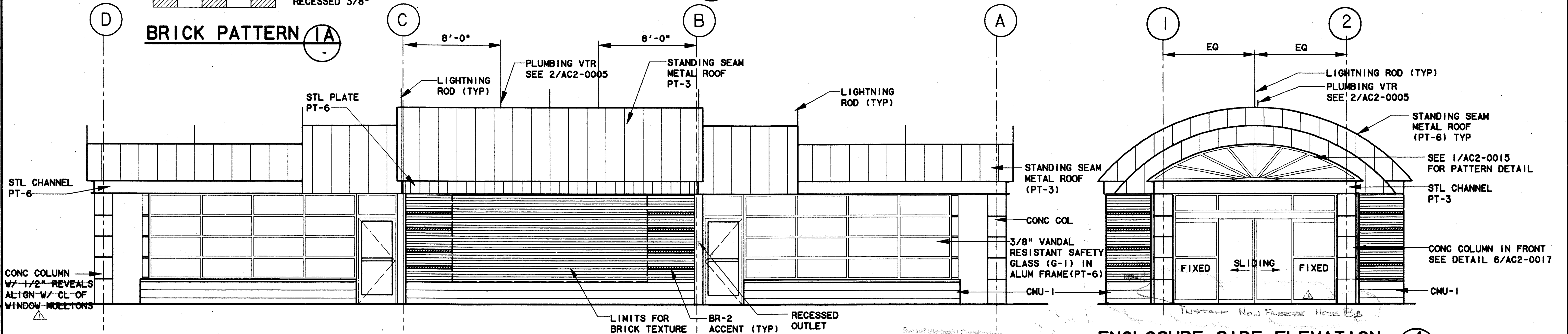
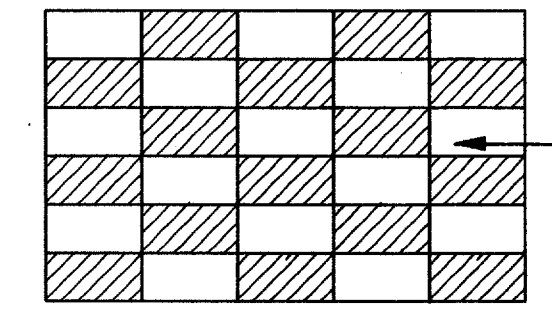
1 2 3 4 5 6 7 8



**ENCLOSURE FRONT ELEVATION (1)**  
 SCALE: 1/4"=1'-0"  
 AC2-0004

**ENCLOSURE SIDE ELEVATION (2)**  
 SCALE: 1/4"=1'-0"  
 AC2-0004

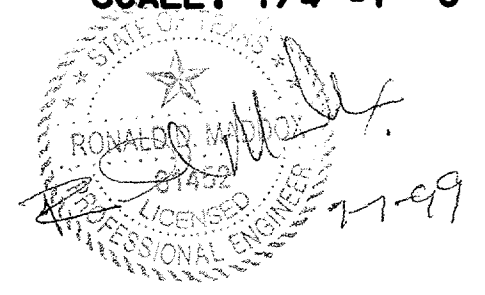
**BRICK PATTERN (IA)**



**ENCLOSURE BACK ELEVATION (3)**  
 SCALE: 1/4"=1'-0"  
 AC2-0004

**ENCLOSURE SIDE ELEVATION (4)**  
 SCALE: 1/4"=1'-0"  
 AC2-0004

Special (As-Built) Consideration  
 Having checked this submission, we certify that it conforms to the requirements of the contract in all respects, subject as otherwise indicated.  
 Contract Number: 97000136  
 Date of Issue: 8/14/99  
 Signature of Firm: [Signature]  
 Title of Official: [Title]  
 Name of Firm: [Firm Name]  
 Title of Official: [Title]  
 Seal of Professional Engineer of Construction Contracting, including a separate unit file, thereby waiving second (as-built) drawings for accuracy of as-built conditions captured herein. Must be returned to: [Address]



**CONFORMED**

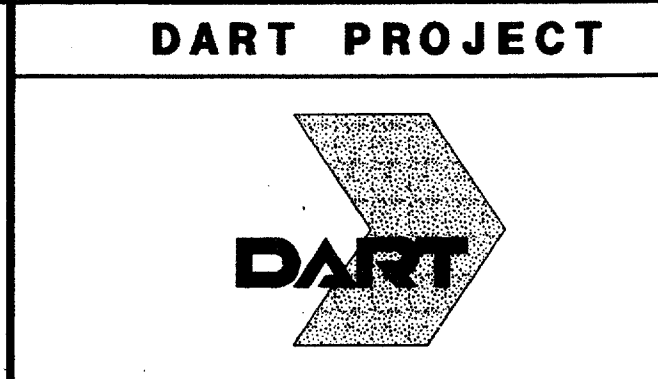
CONTRACT SHEET No. 59 OF 95

REV	DATE	DESCRIPTION	BY	ENG	CHK	APP	REV	DATE	DESCRIPTION	BY	ENG	CHK	APP
△	8/30/99	RECORD (AS BUILT) DRAWINGS	RDH		SLM		△						
△							△						
△							△						
△							△						
△							△						
△							△						



**Lockwood, Andrews & Newnam, Inc.**  
 A SUBSIDIARY OF LEO A DALY

**WLA**  
**WENDY LOPEZ & ASSOCIATES, INC.**  
 ENGINEERING • SURVEYING • CONSTRUCTION SERVICES  
 180 MARKET CENTER BLVD - SUITE 510  
 DALLAS, TEXAS 75207  
 (214) 741-7777



SCALE: 1/4"=1'-0"  
 DRAWN: K. DEAN  
 DESIGNED: N. INFANZON/K. DEAN  
 CHECKED: N. INFANZON/RON BOLTON  
 IN CHARGE: V. STEVENS  
 DATE: 14 AUGUST 97

**ADDISON TRANSIT CENTER ENCLOSURE ELEVATIONS**

CONTRACT C-97000136 DWG No. AC2-0007 REV 01