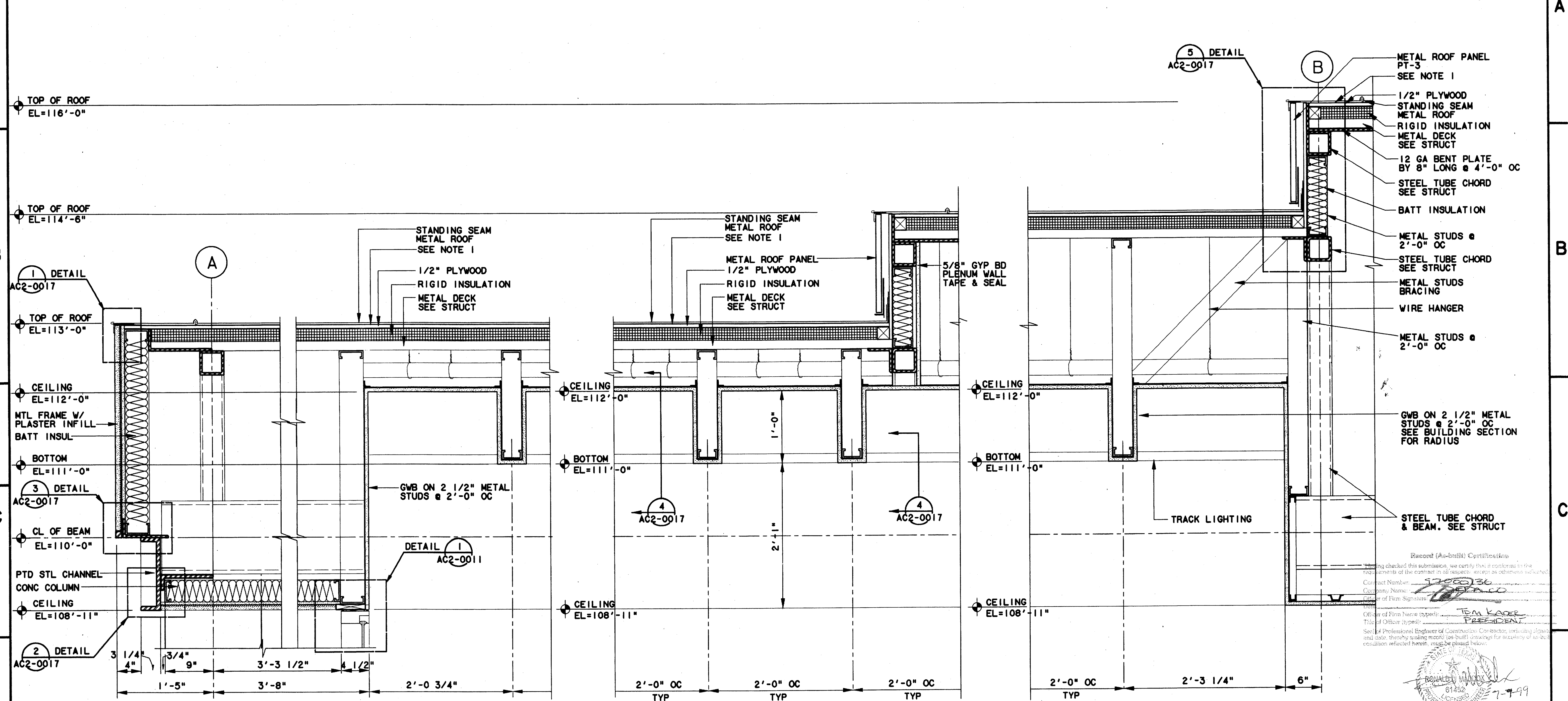


NOTE:  
 1. PROVIDE SELF ADHERING RUBBERIZED ASPHALT MEMBRANE (SELF SEALING) AT ALL ROOF AREAS OF 3" IN 12" OR LESS & CONTINUOUS @ WALLS, PARAPETS & CANOPY EDGES. LAP MEMBRANE UP & TERMINATE IN FLASHING REGLET. LAP EDGE OF MEMBRANE OVER FELT UNDERLAYMENT 4" MIN.



**ROOF/FASCIA DETAIL 1**  
 SCALE: 1/2"=1'-0"  
 AC2-0014 & AC2-0005

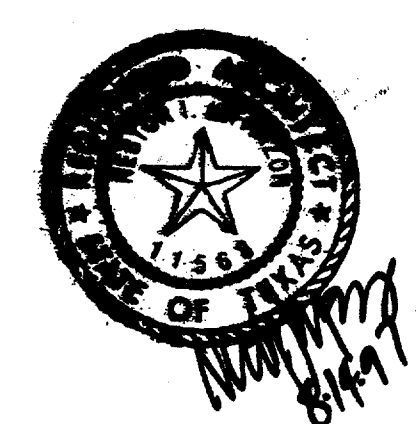
**ROOF/FASCIA DETAIL 2**  
 SCALE: 1/2"=1'-0"  
 AC2-0014 & AC2-0005

**ROOF/FASCIA DETAIL 3**  
 SCALE: 1/2"=1'-0"  
 AC2-0014 & AC2-0005

**CONFORMED**

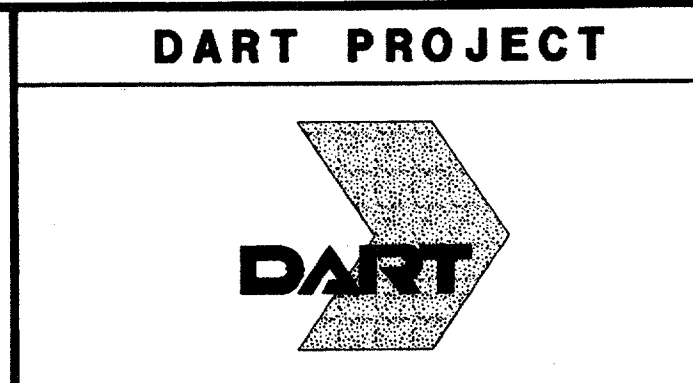
CONTRACT SHEET No. 61 OF 95

REV	DATE	DESCRIPTION	BY	ENG	CHK	APP	REV	DATE	DESCRIPTION	BY	ENG	CHK	APP



**LAN**  
 Lockwood, Andrews & Newnam, Inc.  
 A SUBSIDIARY OF LEO A DALY

**WLA**  
 WENDY LOPEZ & ASSOCIATES, INC.  
 ENGINEERING • SURVEYING • CONSTRUCTION SERVICES  
 1823 MARKER CENTER BLVD - SUITE 510  
 DALLAS, TEXAS 75207  
 (214) 76-7777



SCALE: 1/2"=1'-0"  
 DRAWN: K. DEAN  
 DESIGNED: N. INFANZON/K. DEAN  
 CHECKED: N. INFANZON/FRAN BOLTON  
 IN CHARGE: V. STEVENS  
 DATE: 14 AUGUST 97

**ADDISON TRANSIT CENTER**  
**ENCLOSURE SECTIONS & DETAILS**

\$\$\$PRF ROT\$\$\$  
 \$\$\$SYTIME\$\$\$  
 \$\$\$PRF\$\$\$  
 \$\$\$USERNAME\$\$\$  
 \$\$\$FILE1\$\$\$  
 \$\$\$FILE2\$\$\$  
 \$\$\$FILE3\$\$\$  
 \$\$\$FILE4\$\$\$  
 \$\$\$FILE5\$\$\$