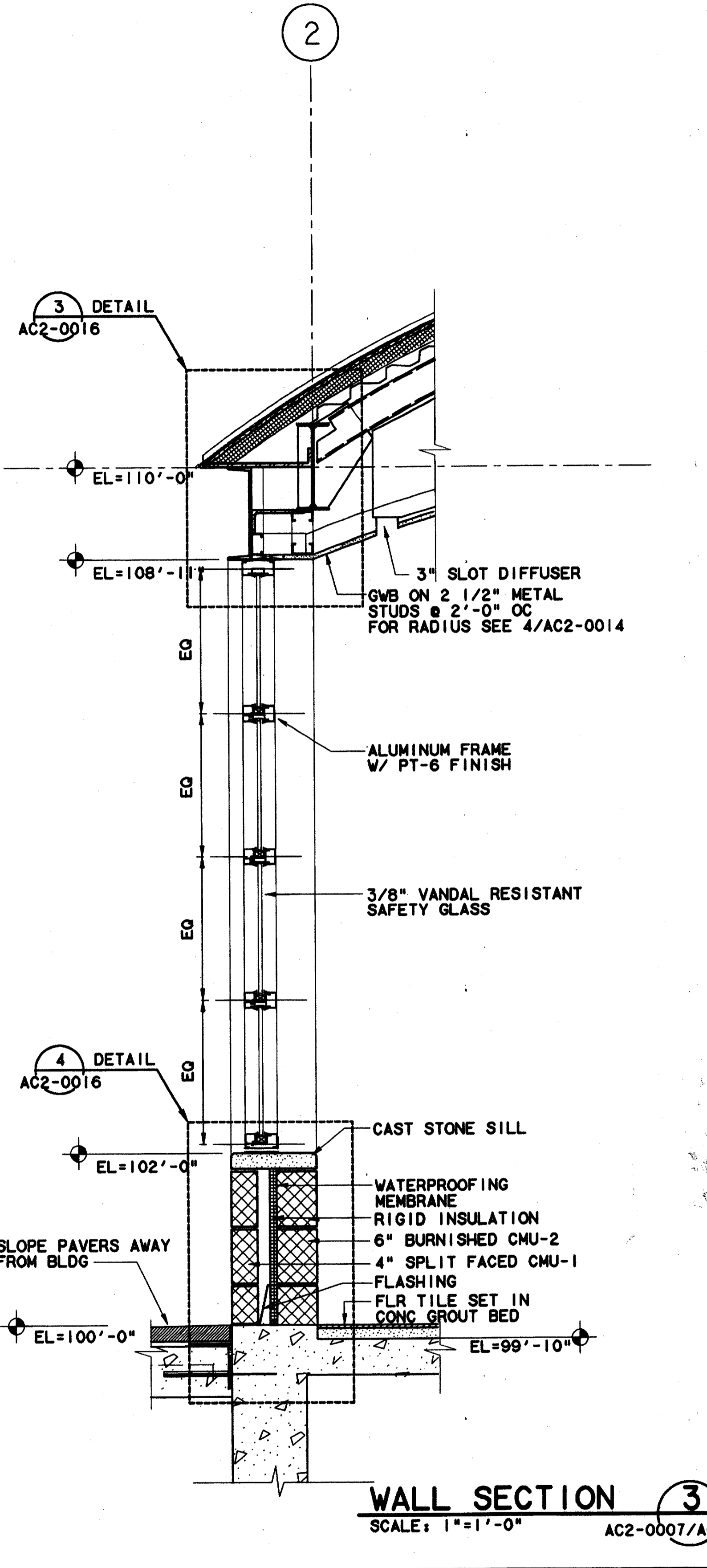
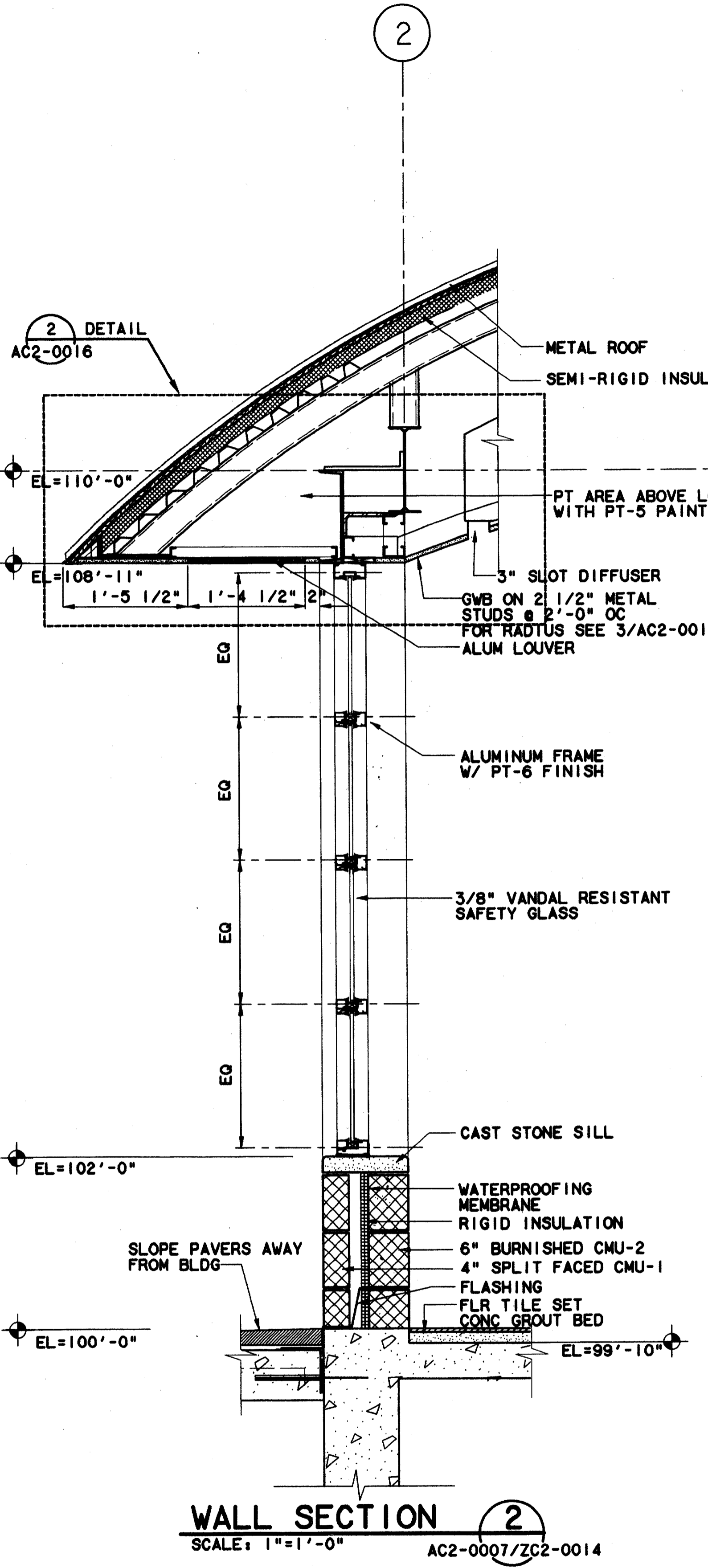
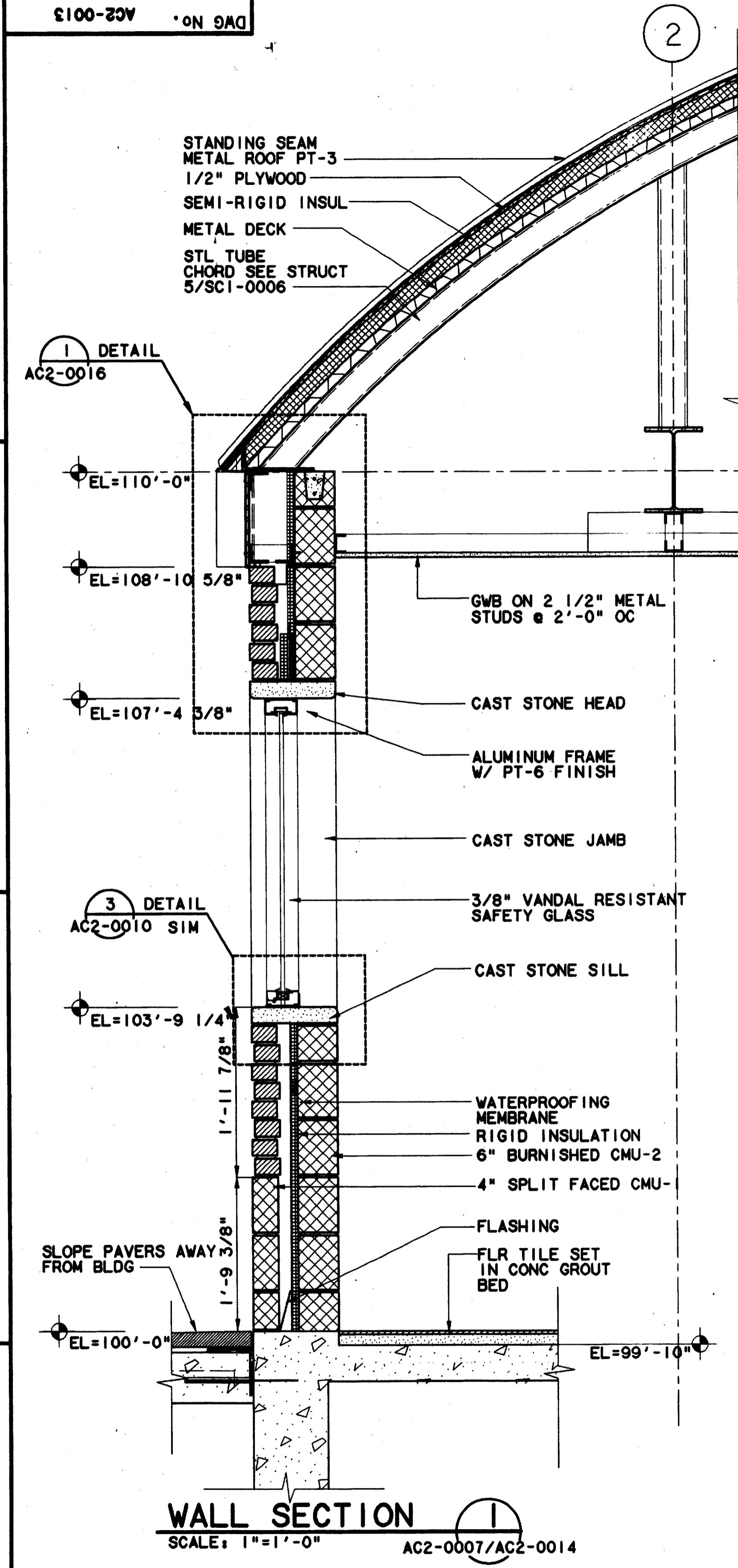


\$\$\$\$\$SYTIME\$\$\$\$\$  
 \$\$\$PRF\$\$\$  
 \$\$\$USERNAME\$\$\$

\$\$\$PRF ROT\$\$\$  
 \$\$\$PEN\$\$\$

\$\$\$FILE6\$\$\$  
 \$\$\$FILE7\$\$\$  
 \$\$\$FILE8\$\$\$  
 \$\$\$FILE9\$\$\$  
 \$\$\$FILE10\$\$\$

FILE1\$\$\$  
 FILE2\$\$\$  
 FILE3\$\$\$  
 FILE4\$\$\$  
 FILE5\$\$\$

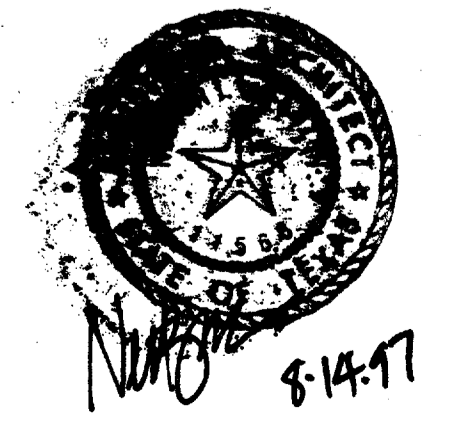


Record (As-built) Certification  
 Having checked the submission, we certify that it complies with the requirements of the contract in all respects as submitted and approved.  
 Contract Number: 97000136  
 Company Name: W&A  
 Professional Firm Signature: Tom Kader, President  
 Date: 7-7-99  
 Title of Professional Engineer of Construction Contractor, including signature and seal of said Professional Engineer, must be placed below.

**CONFORMED**

CONTRACT SHEET No. 65 OF 95

REV	DATE	DESCRIPTION	BY	ENG	CHK	APP	REV	DATE	DESCRIPTION	BY	ENG	CHK	APP



**LA**  
 Lockwood, Andrews & Newnam, Inc.  
 A SUBSIDIARY OF LEO A DALY

**W&A**  
 WENDY LOPEZ & ASSOCIATES, INC.  
 ENGINEERING • SURVEYING • CONSTRUCTION SERVICES  
 105 MARKET CENTER BLVD - SUITE 90  
 DALLAS, TEXAS 75207  
 (214) 761-7777

**DART PROJECT**

SCALE: 1"=1'-0"  
 DRAWN: K. DEAN  
 DESIGNED: N. INFANZON/K. DEAN  
 CHECKED: N. INFANZON/RON BOLTON  
 IN CHARGE: V. STEVENS  
 DATE: 14 AUGUST 97

**ADDISON  
 TRANSIT CENTER**  
**ENCLOSURE WALL  
 SECTIONS & DETAILS**  
 CONTRACT C-97000136    DWG No. AC2-0015    REV 0