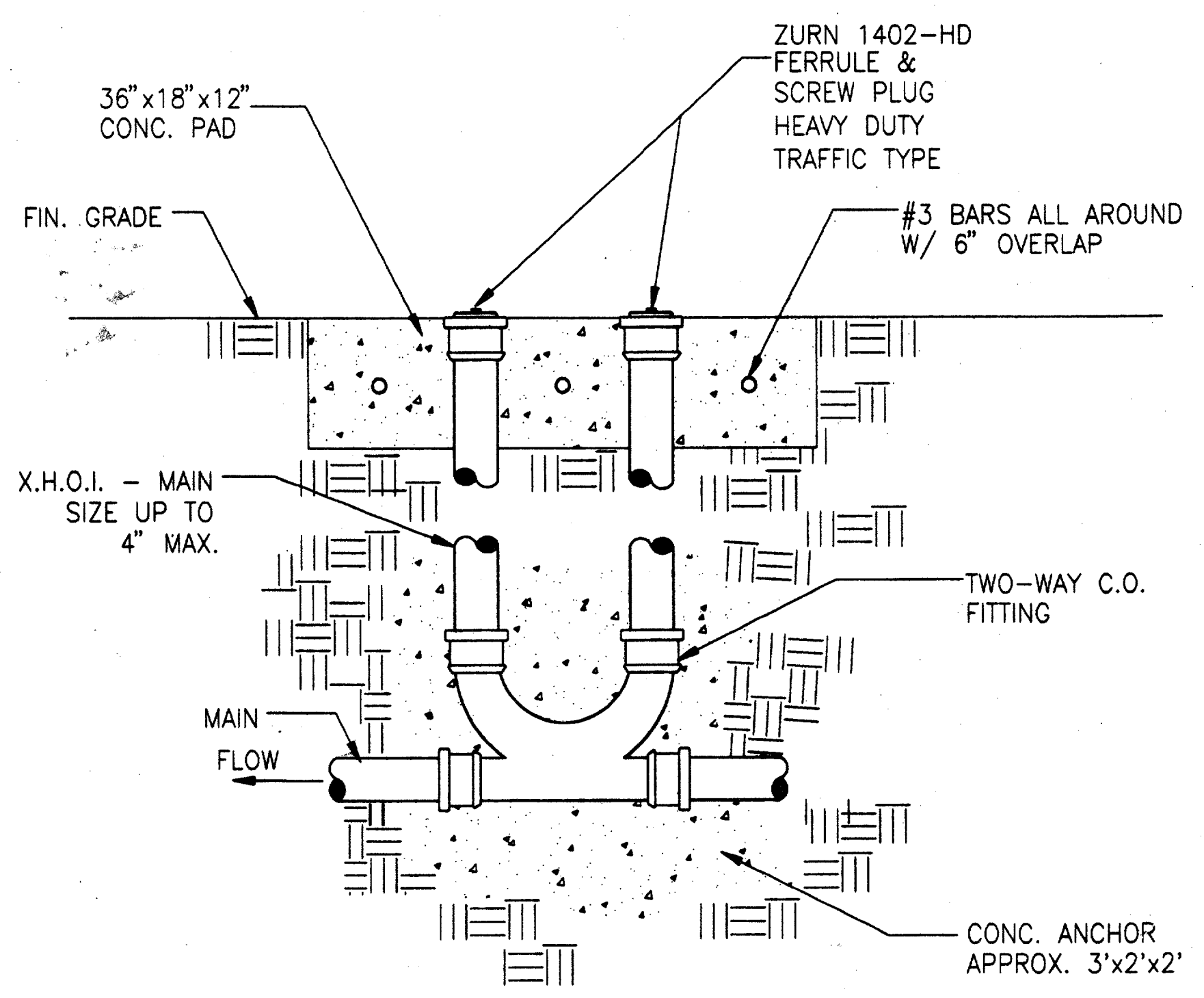


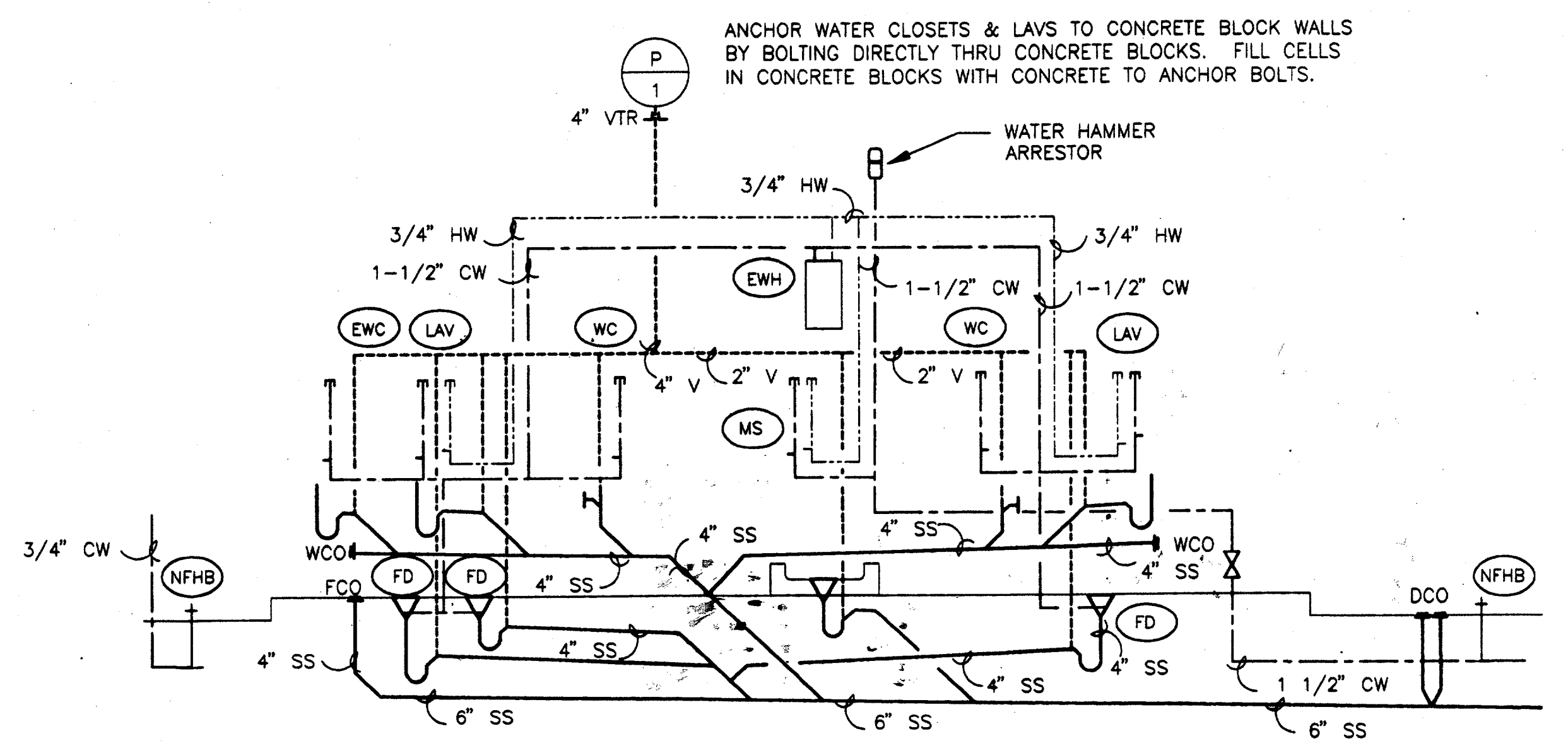
**ELECTRIC WATER HEATER DETAIL 1**  
NOT TO SCALE PC2-0002

ITEM	FIXTURE	MANUFACTURER AND MODEL NO.	TRIM	MOUNTING			ROUGH-IN SIZES (INCHES)				NOTE NUMBERS	REMARKS
				WALL	CHAIR CARRIER	FLOOR COUNTER TOP	HW	CW	V	W		
(WC)	WATER CLOSET	ACORN 2115-ADA SERIES SIPHON JET TOILET STAINLESS STEEL - ELONGATED	SLOAN ROYAL OPTIMA 152ES-S w/EL-150-L INFRARED FLUSH VALVE				-	1 1/2"	2"	4"	1	LOW FLOW 1.6 GAL. BACK OUTLET CONCEALED INSTALLATION (HANDICAP)
(LAV)	LAVATORY	ACORN 1953-ADA SERIES HANDICAPPED LAV STAINLESS STEEL	SPEAKMAN S-8000 SENSORFLO SERIES INFRARED FAUCET				3/8"	3/8"	1 1/4"	1 5/8"	1, 2, 3	CONCEALED INSTALLATION (HANDICAP)
(EWC)	ELECTRIC WATER COOLER	HALSEY TAYLOR HACBBL-Q BARRIER-FREE COOLER STAINLESS STEEL	PUSH ACTUATION MECHANISM, STANDARD FINISH				-	1 1/2"	1 1/4"	1 1/2"	1	DUAL BUBBLER (HANDICAP)
(MS)	MOP SINK	FIAT MSB-3624 MOLDED STONE W/HOSE & BRACKETS	832-AA-30" 830-AA W/TOP BRACE				3/4"	3/4"	1 1/2"	3"		
(FD)	FLOOR DRAIN	WADE W-1100 CAST IRON FLOOR DRAIN WITH SATIN STRAINER					-	-	2"	3"		PROVIDE TRAP PRIMER
(EWH)	ELECTRIC WATER HEATER	SEE DETAIL 1										
(NFHB)	NON-FREEZE HOSE BIBB	ZURN Z-1360 ANTISIPHON GROUND HYDRANT WITH LOCKABLE HEAVY DUTY COVER					-	3/4"	-	-		

NOTES: 1. FIXTURES TO MEET HANDICAPPED REQUIREMENTS OF ADA.  
2. PROVIDE INSULATION ON PIPING AND P-TRAP FOR UNDER-COUNTER PIPING TO MEET ADA REQUIREMENTS. PROVIDE BRASSCRAFT FR1917C ANGLE STOPS.  
3. PROVIDE LAWLER 3000 THERMOSTATICALLY CONTROLLED MIXING VALVE ON LAV INFRARED FAUCET TO MIX HOT AND COLD WATER.



**EXTERIOR TWO-WAY CLEANOUT 2**  
NOT TO SCALE PC2-0002



**PLUMBING RISER DETAIL 3**  
NOT TO SCALE PC2-0002

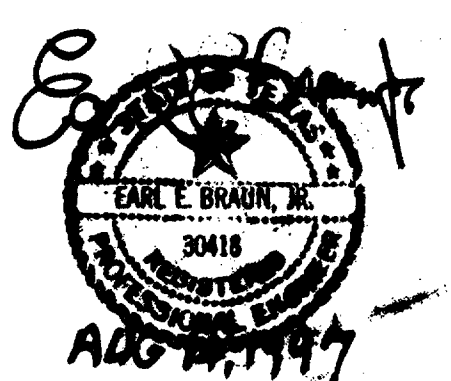
Required (As-Built) Certification  
Having checked this submission, we certify that it conforms to the stated requirements of the contract in all respects, except as otherwise indicated.  
Contract Number: 7700036  
Company Name: JACO  
Date: 7-7-99  
Title of Officer: PRESIDENT  
Seal of Professional Engineer of Construction Contractors, including signature and date, thereby certifying that the drawings for accuracy of all work conditions reflected herein, must be placed below.

**CONFORMED**

CONTRACT SHEET No. 89 of 95

**ADDISON TRANSIT CENTER**  
PLUMBING SCHEDULES AND DETAILS

REV.	DATE	DESCRIPTION	BY	ENG.	CHK.	APP.	REV.	DATE	DESCRIPTION	BY	ENG.	CHK.	APP.
Δ	8/30/99	REVISION AS BUILT SUBMISSION	RDM		DLM								
Δ													
Δ													
Δ													
Δ													
Δ													



**GERARD & ASSOCIATES**  
CONSULTING ENGINEERS  
Mechanical Electrical Plumbing Systems Design  
4125 N. Central Expressway Dallas, TX 75204  
(214) 528-8044 FAX (214) 528-0766

**WINDY LOPEZ & ASSOCIATES, INC.**  
INSPECTION • SURVEYING • CONSTRUCTION SERVICES  
288 MAUNSELL CENTER BLVD - SUITE 200  
DALLAS, TEXAS 75201  
(972) 748-7777

DART PROJECT



SCALE: NO SCALE  
DRAWN: P. JACKSON  
DESIGNED: E. BRAUN  
CHECKED: W. GERARD  
IN CHARGE: V. STEVENS  
DATE: 14-AUG-97



CONTRACT C-97000136 DWG. No. PC2-0002 REV. 01