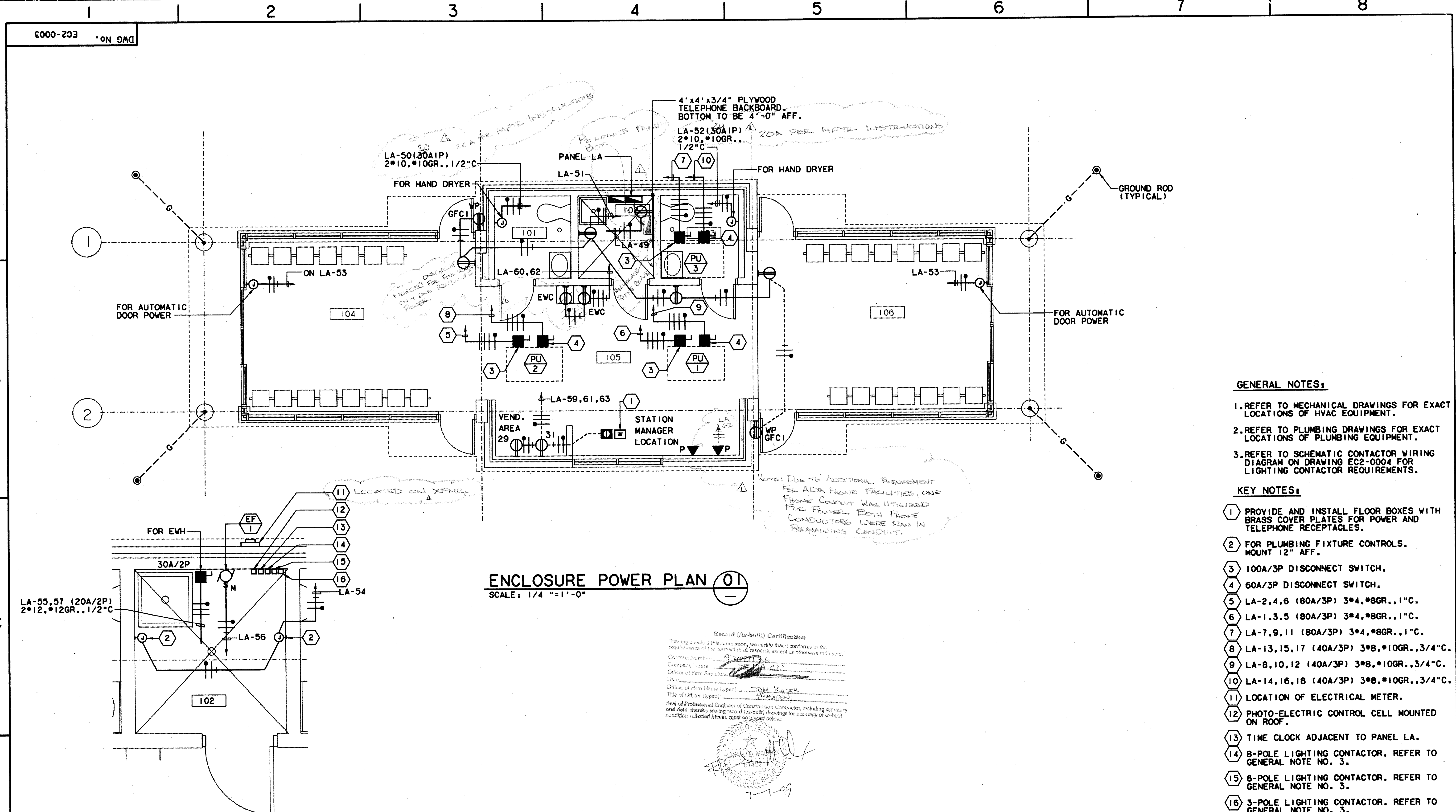


\$\$\$SYTIME\$\$\$\$
 \$\$\$PRF\$\$\$\$
 \$\$\$USERNAME\$\$\$\$
 \$\$\$PRF ROT\$\$\$\$
 \$\$\$PEN\$\$\$\$
 \$\$\$ILE6\$\$\$\$
 \$\$\$ILE7\$\$\$\$
 \$\$\$ILE8\$\$\$\$
 \$\$\$ILE9\$\$\$\$
 \$\$\$ILE10\$\$\$\$
 \$\$\$ILE11\$\$\$\$
 \$\$\$ILE12\$\$\$\$
 \$\$\$ILE13\$\$\$\$
 \$\$\$ILE14\$\$\$\$
 \$\$\$ILE15\$\$\$\$
 \$\$\$ILE16\$\$\$\$
 \$\$\$ILE17\$\$\$\$
 \$\$\$ILE18\$\$\$\$
 \$\$\$ILE19\$\$\$\$
 \$\$\$ILE20\$\$\$\$



ENCLOSURE POWER PLAN 01
SCALE: 1/4" = 1'-0"

ENLARGED PLAN-JANITOR CLOSET 02
SCALE: 1/2" = 1'-0"

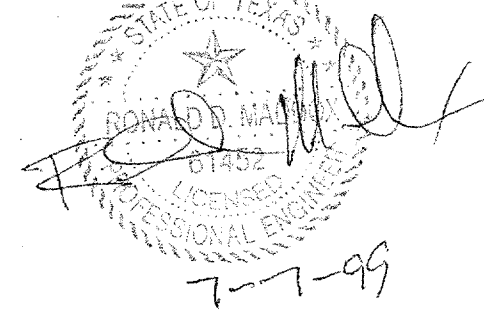
GENERAL NOTES:

1. REFER TO MECHANICAL DRAWINGS FOR EXACT LOCATIONS OF HVAC EQUIPMENT.
2. REFER TO PLUMBING DRAWINGS FOR EXACT LOCATIONS OF PLUMBING EQUIPMENT.
3. REFER TO SCHEMATIC CONTACTOR WIRING DIAGRAM ON DRAWING EC2-0004 FOR LIGHTING CONTACTOR REQUIREMENTS.

KEY NOTES:

- 1 PROVIDE AND INSTALL FLOOR BOXES WITH BRASS COVER PLATES FOR POWER AND TELEPHONE RECEPTACLES.
- 2 FOR PLUMBING FIXTURE CONTROLS. MOUNT 12" AFF.
- 3 100A/3P DISCONNECT SWITCH.
- 4 60A/3P DISCONNECT SWITCH.
- 5 LA-2,4,6 (80A/3P) 3*4, #8GR., 1"C.
- 6 LA-1,3,5 (80A/3P) 3*4, #8GR., 1"C.
- 7 LA-7,9,11 (80A/3P) 3*4, #8GR., 1"C.
- 8 LA-13,15,17 (40A/3P) 3*8, #10GR., 3/4"C.
- 9 LA-8,10,12 (40A/3P) 3*8, #10GR., 3/4"C.
- 10 LA-14,16,18 (40A/3P) 3*8, #10GR., 3/4"C.
- 11 LOCATION OF ELECTRICAL METER.
- 12 PHOTO-ELECTRIC CONTROL CELL MOUNTED ON ROOF.
- 13 TIME CLOCK ADJACENT TO PANEL LA.
- 14 8-POLE LIGHTING CONTACTOR. REFER TO GENERAL NOTE NO. 3.
- 15 6-POLE LIGHTING CONTACTOR. REFER TO GENERAL NOTE NO. 3.
- 16 3-POLE LIGHTING CONTACTOR. REFER TO GENERAL NOTE NO. 3.

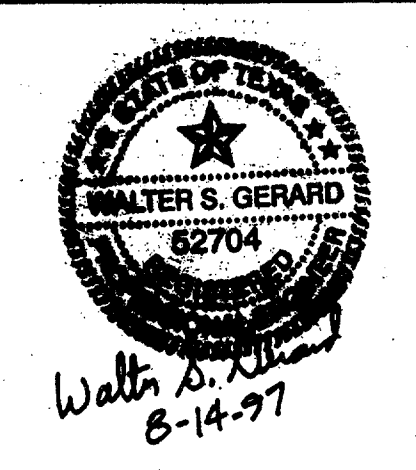
Record (As-built) Certification
 Having checked this submission, we certify that it conforms to the requirements of the contract in all respects, except as otherwise indicated.
 Contract Number: 970206
 Company Name: W.S. GERARD & ASSOCIATES
 Officer of Firm Signature: [Signature]
 Date: 7-7-99
 Officer of Firm Name (typed): W.S. GERARD
 Title of Officer (typed): PRESIDENT
 Seal of Professional Engineer of Construction Contractor, including signature and date, thereby sealing record (as-built) drawings for accuracy of as-built condition reflected herein, must be placed below.



CONFORMED

CONTRACT SHEET No. 94 OF 95

REV	DATE	DESCRIPTION	BY	ENG	CHK	APP	REV	DATE	DESCRIPTION	BY	ENG	CHK	APP
△	8/30/99	RECORD AS-BUILT SUBMITTAL	RDM				△						
△							△						
△							△						
△							△						
△							△						
△							△						



GERARD & ASSOCIATES
 CONSULTING ENGINEERS
 Mechanical Electrical Plumbing
 System Design
 409 Centre Dallas, Texas 75208 (214)946-6404



WENDY LOPEZ & ASSOCIATES, INC.
 ENGINEERING - SURVEYING - CONSTRUCTION SERVICES
 125 MARKET CENTER BLVD - SUITE 510
 DALLAS, TEXAS 75207
 (214) 742-7777

DART PROJECT

DART

SCALE	1/4" = 1'-0"
DRAWN	P. LLOYD
DESIGNED	V. GERARD
CHECKED	V. GERARD
IN CHARGE	V. STEVENS
DATE	14 AUG 97

ADDISON TRANSIT CENTER ENCLOSURE POWER PLAN

CONTRACT C-97000136

DWG No. EC2-0003

REV 01

ITCB02.004 BORDER
 ITCB01.008 POWER
 ITCB02.004 ARCH
 ITCB02.004 JANITOR