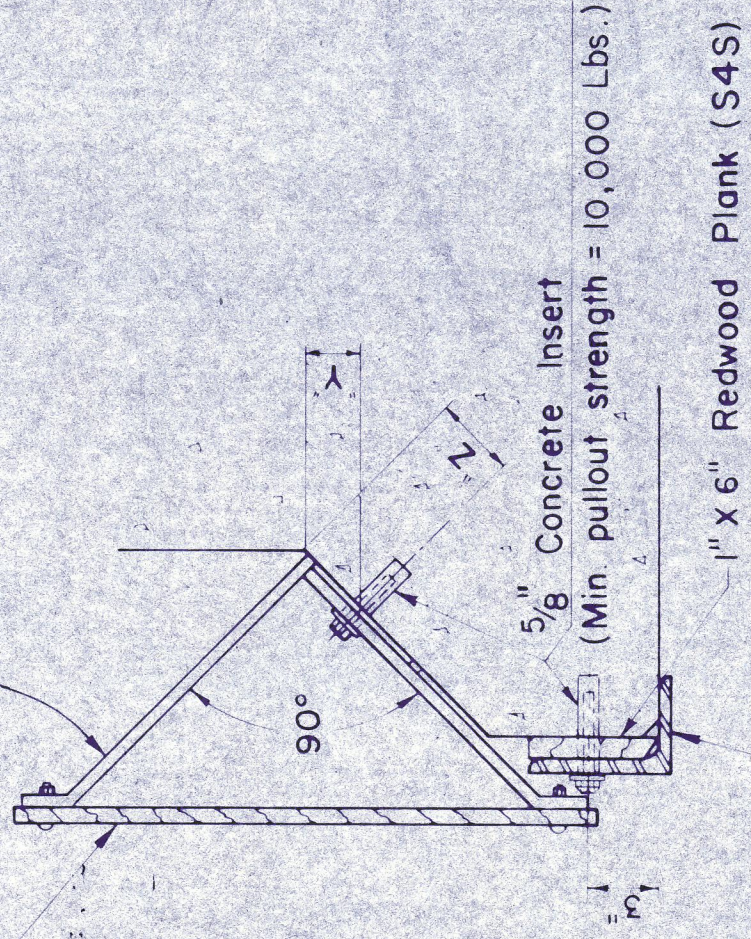


# PRESTRESSED CONCRETE UNITS

W12-3 CLEARANCE SIGN

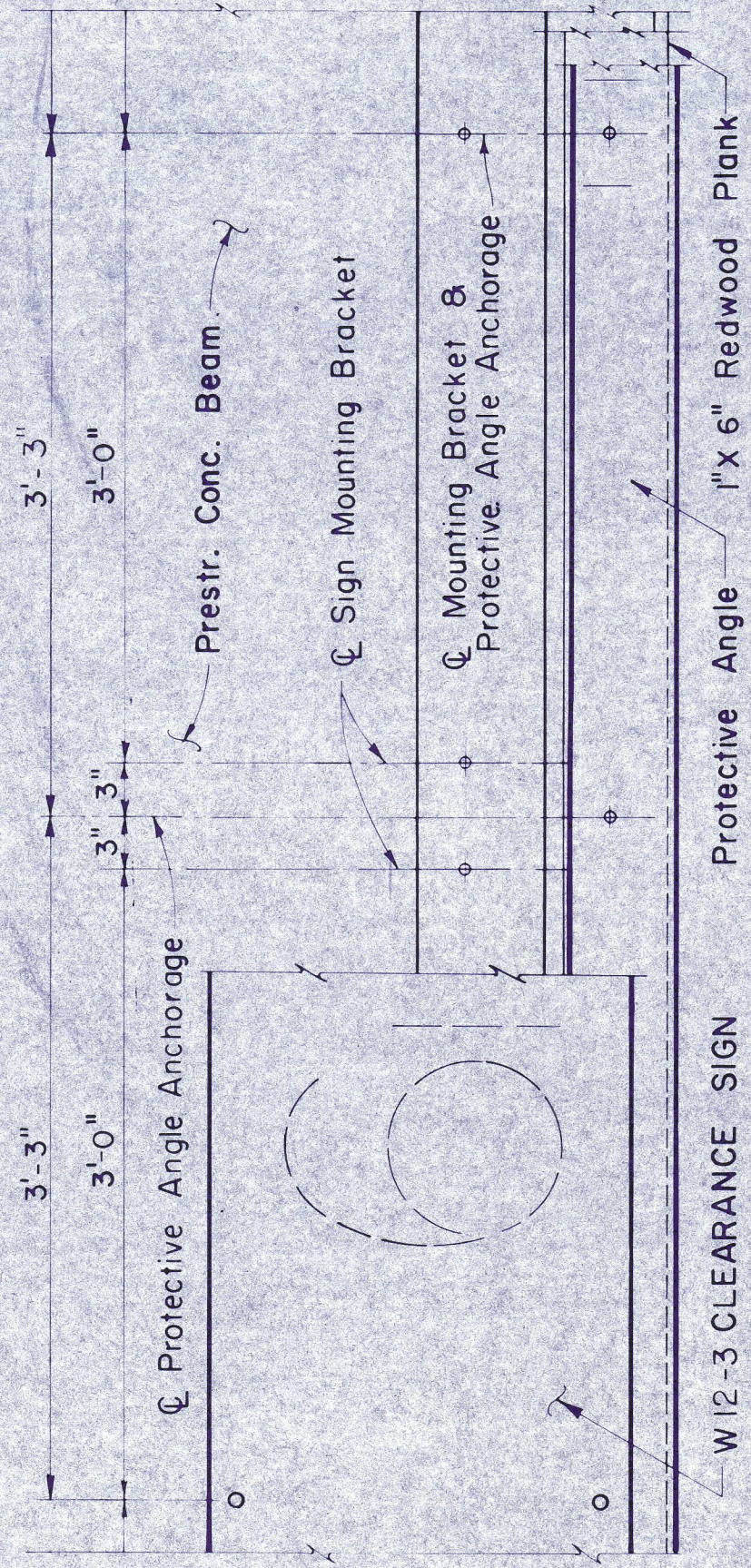
BEAM	"Y"	"Z"
TY. A	2 9/16	3 5/8
TY. B	2 1/4	3 3/16
TY. C	2 1/4	3 3/16
TY. 54	2 1/4	3 3/16
TY. 72	2 1/4	3 3/16
TY. IV	6 1/4	8 13/16

Sign Mounting Bracket

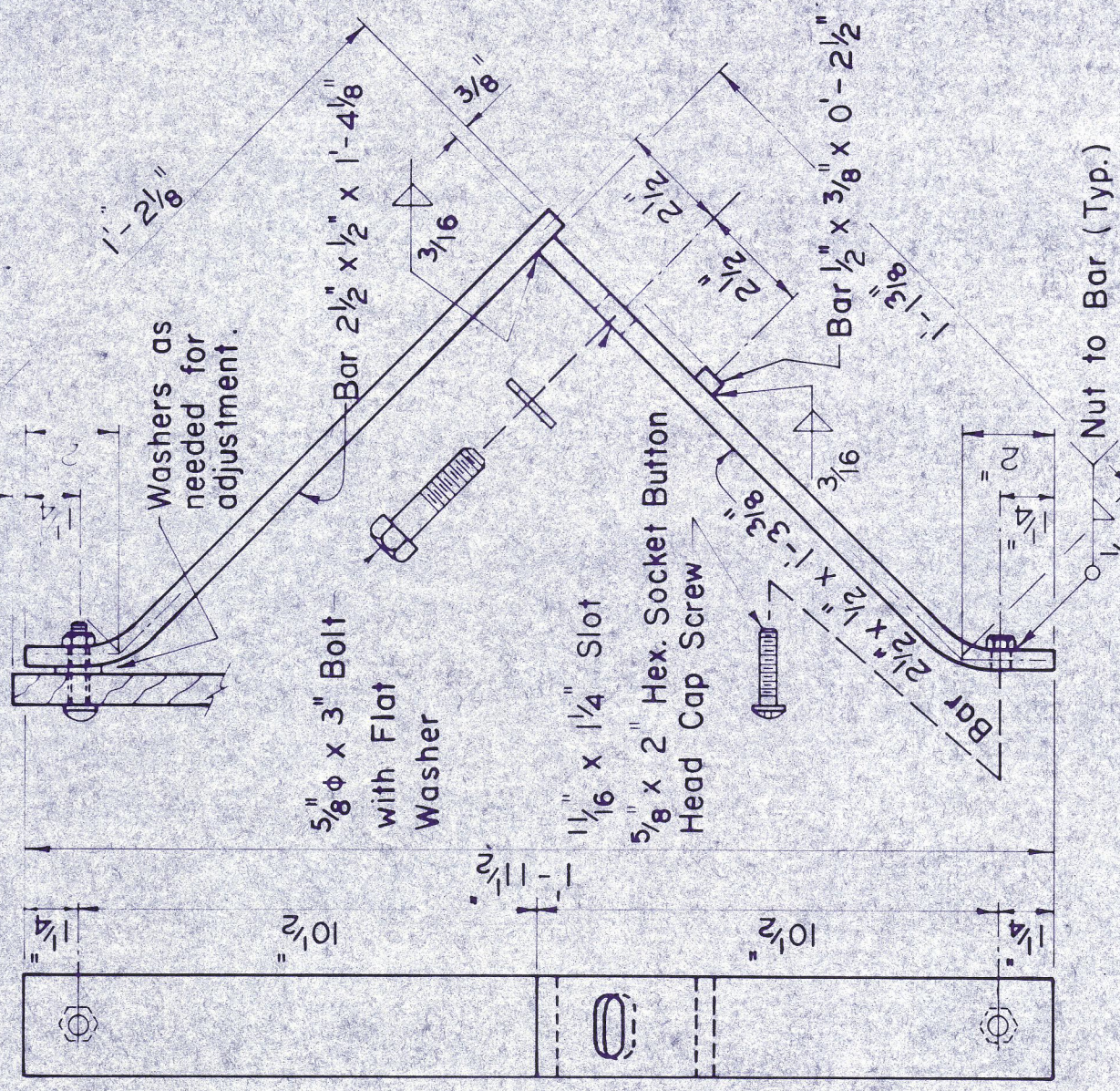


Protective Angle

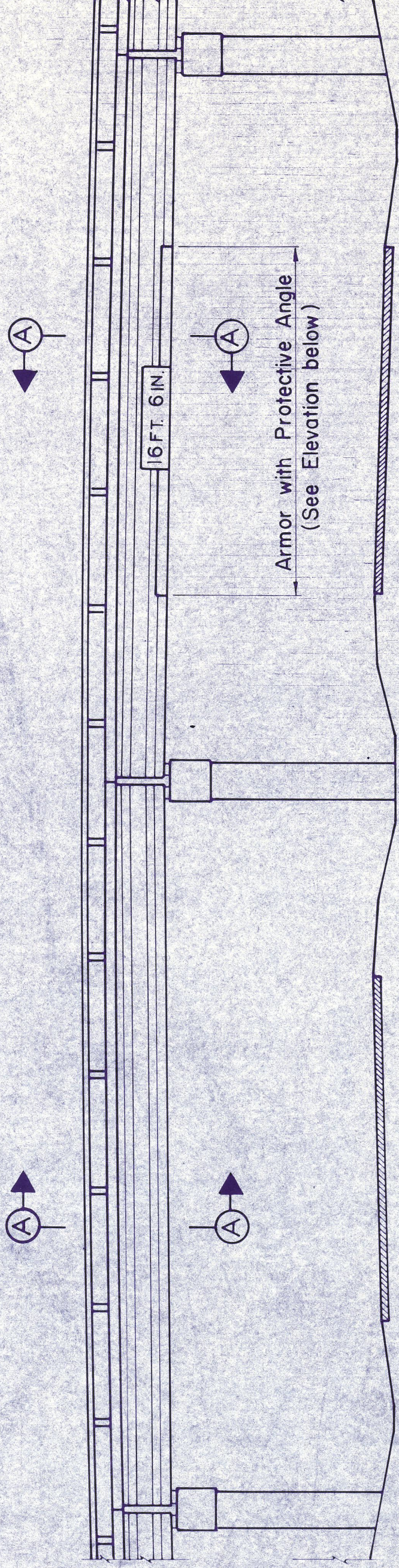
## SEC. A-A



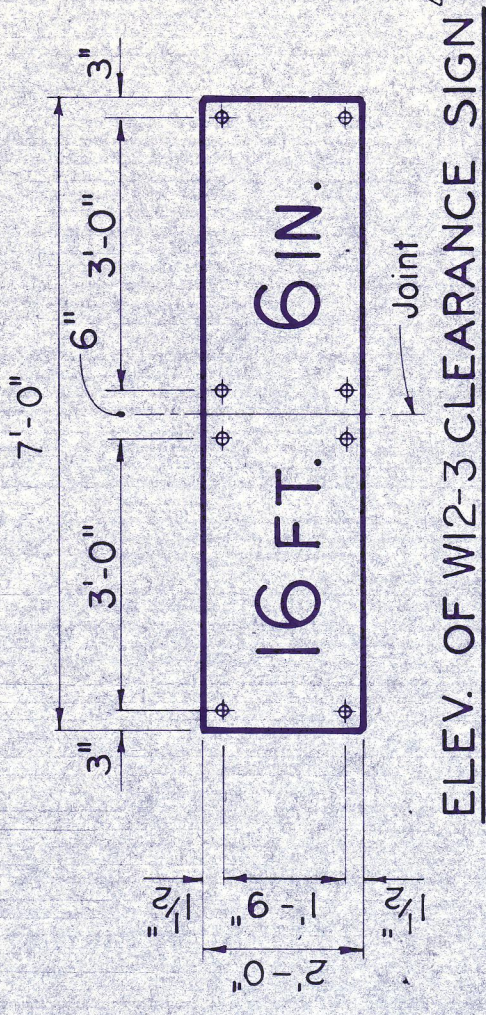
TYPICAL INSTALLATION OF CLEARANCE SIGN & PROTECTIVE ANGLE



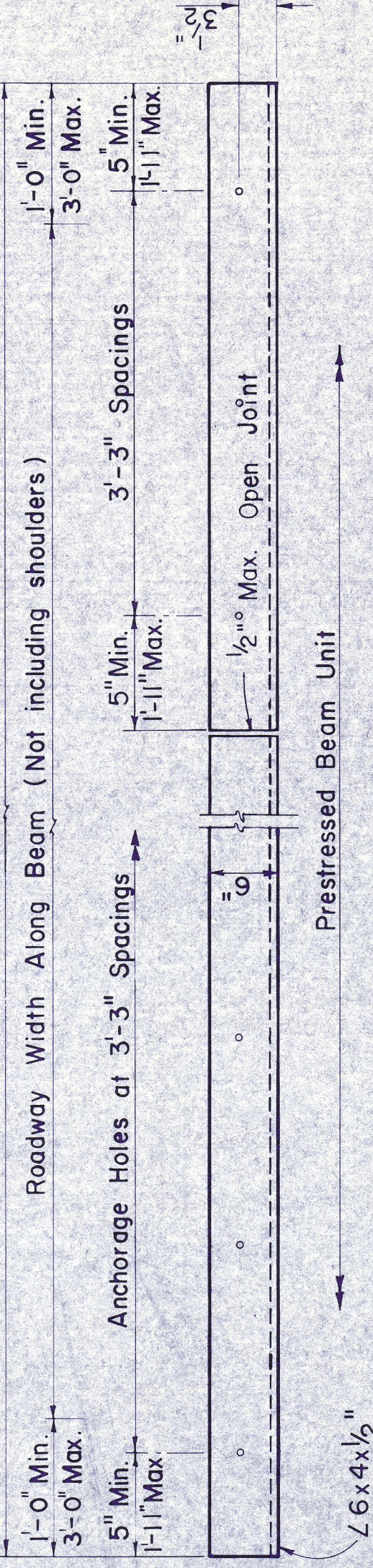
CLEARANCE SIGN MOUNTING BRACKET



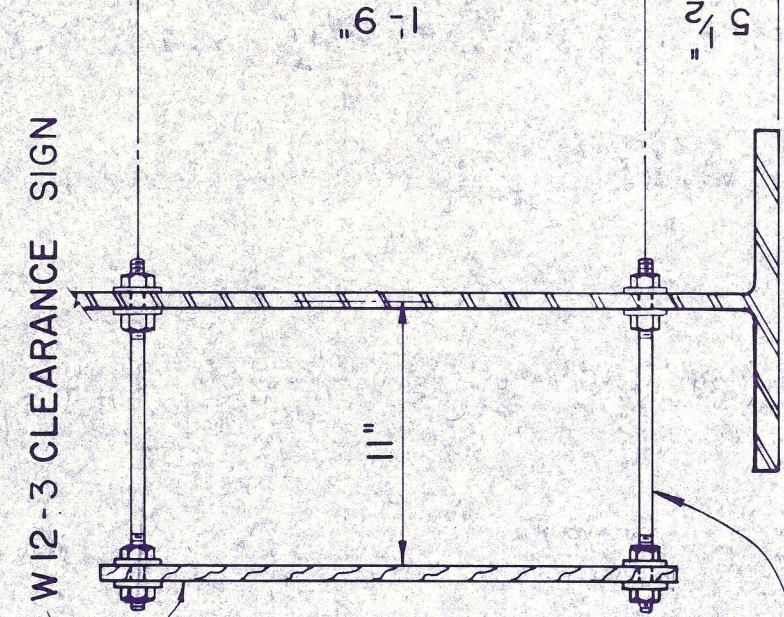
## TYPICAL BRIDGE ELEVATION



See General Plan for Overall Length



## STEEL GIRDER & I-BEAM UNITS



5/8" x 1-4" Threaded Rod with 4 Hex. Nuts & 4 Flat Washers.

TEXAS STATE DEPARTMENT OF HIGHWAYS AND PUBLIC TRANSPORTATION

STANDARD DRAWING BPA

Rev. 5-81

REPRODUCED FROM

CLEARANCE SIGN MOUNTING BOLTS

### GENERAL NOTES:

- Clearance signs shall be furnished by the Authority for installation by the Contractor. Blanks shall be of 0.080 inch aluminum. Sign numerals and letters shall be Series E with stroke modified to 20% of letter height. Numbers shall be 12 inches high and letters shall be 8 inches high.
- Protective Angles shall be Structural steel conforming to A.S.T.M. Designation A36, A441, A572 or A588 and may be shipped in convenient lengths (11'-4" Min.)
- Redwood Planks shall be beveled to clear inside radius of Protective Angle and shall be full length of angle. Joints in plank shall not coincide with joints in angle.
- Either clearance signs, protective angles or both together may be installed using these details. For clearance signs these details are appropriate for skew angles up to 30°. For protective angles these details are appropriate for any skew.
- Plans may require the complete assembly consisting of protective angle and mounting brackets, sign and sign mounting brackets, or may require only portions of this assembly, all as noted on the General Plan and Elevation sheet.

NO.	GENERAL REVISIONS	DATE
1	JFH	3-14-83

TEXAS TURNPIKE AUTHORITY  
DALLAS NORTH TOLLWAY

BRIDGE PROTECTIVE ASSEMBLY

HNTB  
SECTION VII

HOWARD NEEDLES TAMMEN & BERGENDOFF	DESIGNED	DRAWN	CHECKED
THD	5-81	THD	5-81
GDH	3-12-83	NONE	NONE

STANDARD DRAWING NO 29

CONTRACT NO. DNT-115