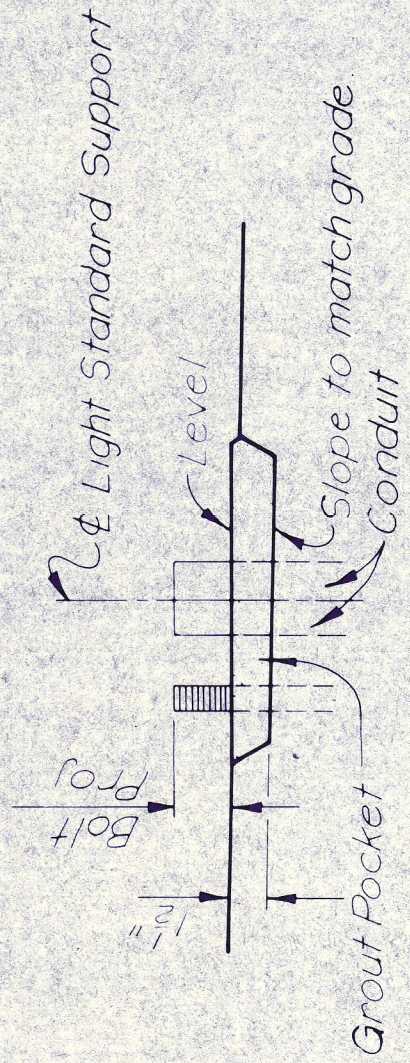
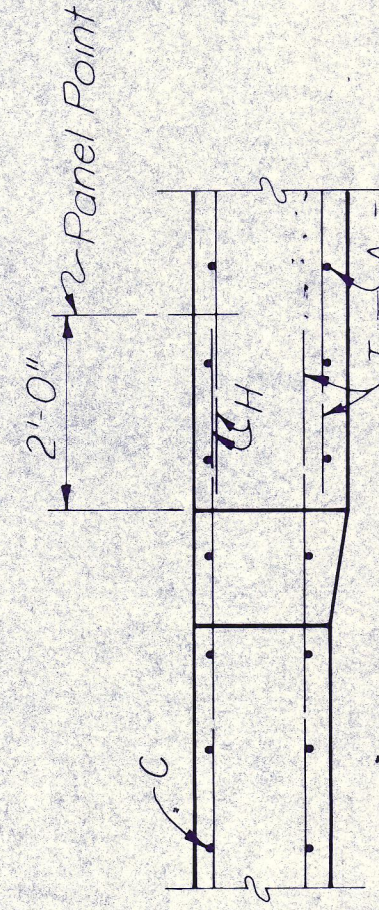


PLAN

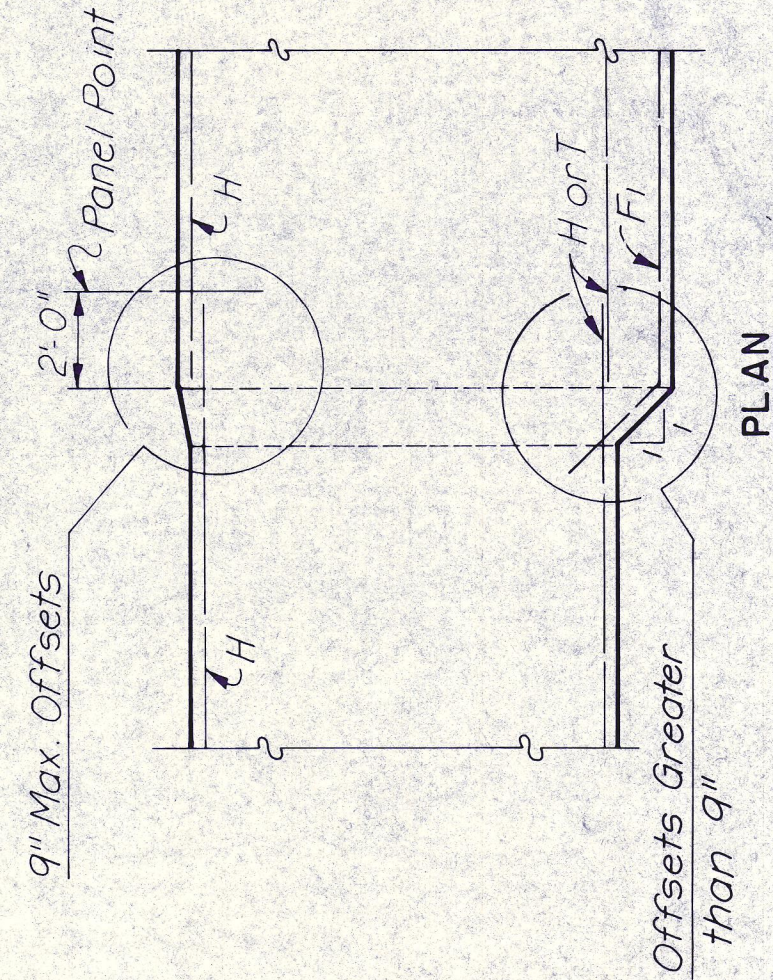
Note: Light standard supports shall not be paid for directly, but shall be considered subsidiary to Item 450, "Railing (Type T5)".



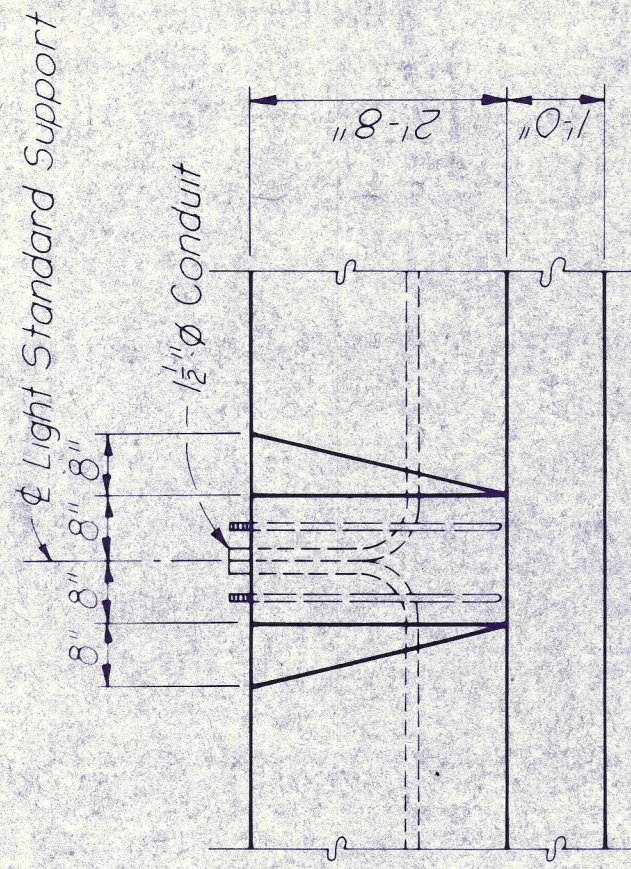
GROUT POCKET DETAIL



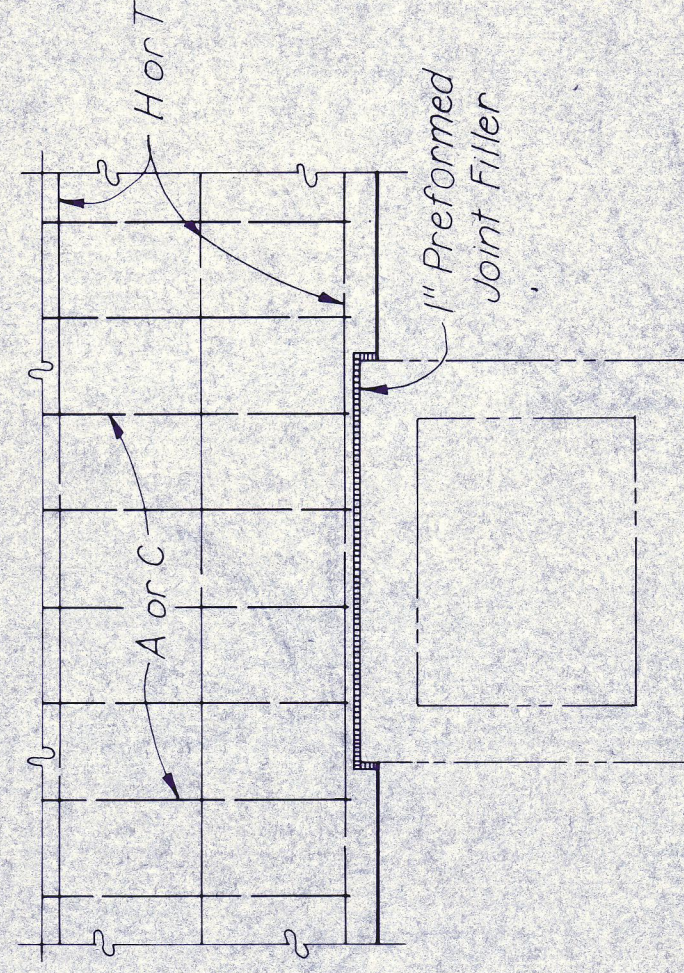
ELEVATION



FOOTING TRANSITION DETAILS

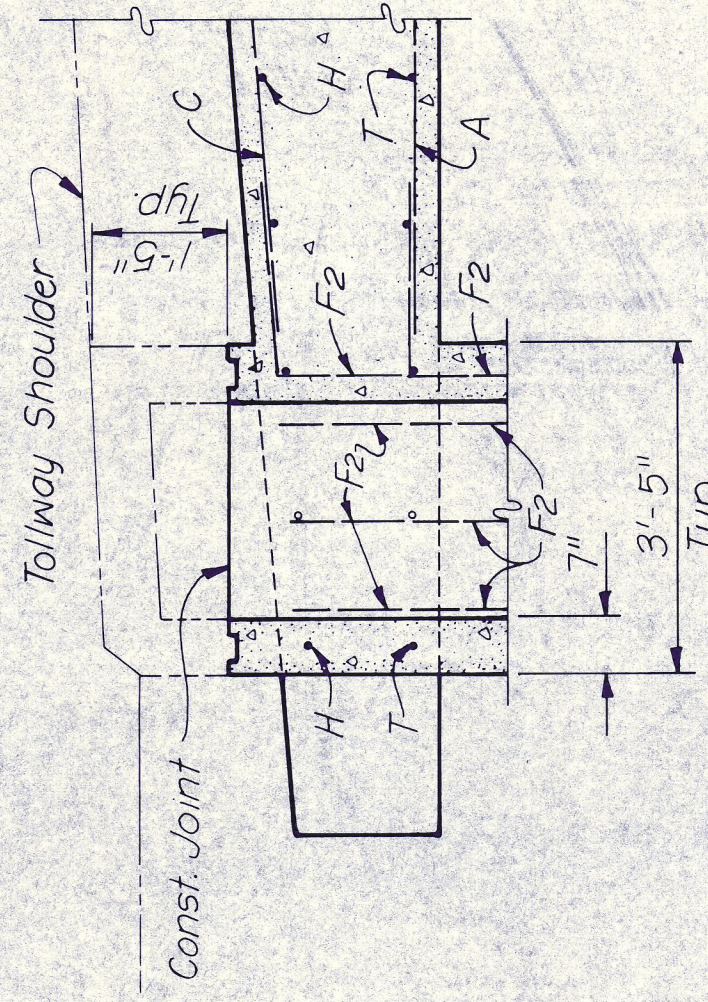


ELEVATION

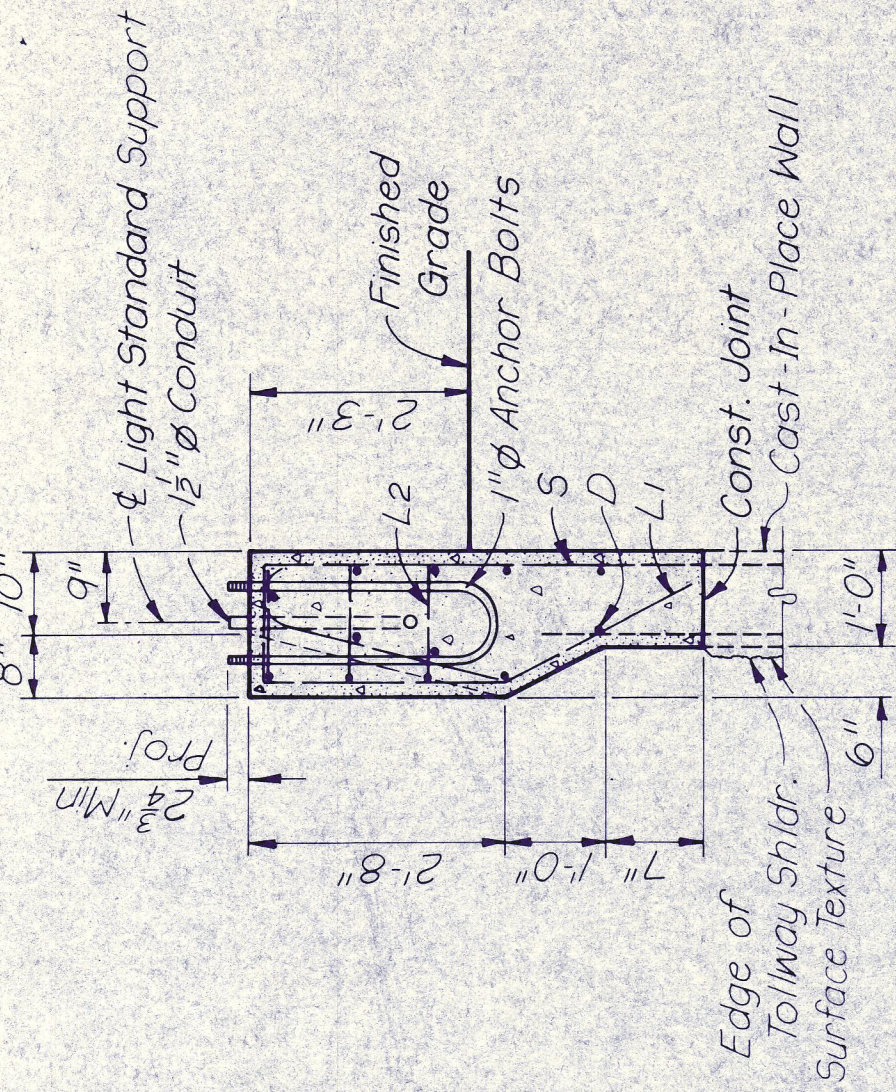


PLAN

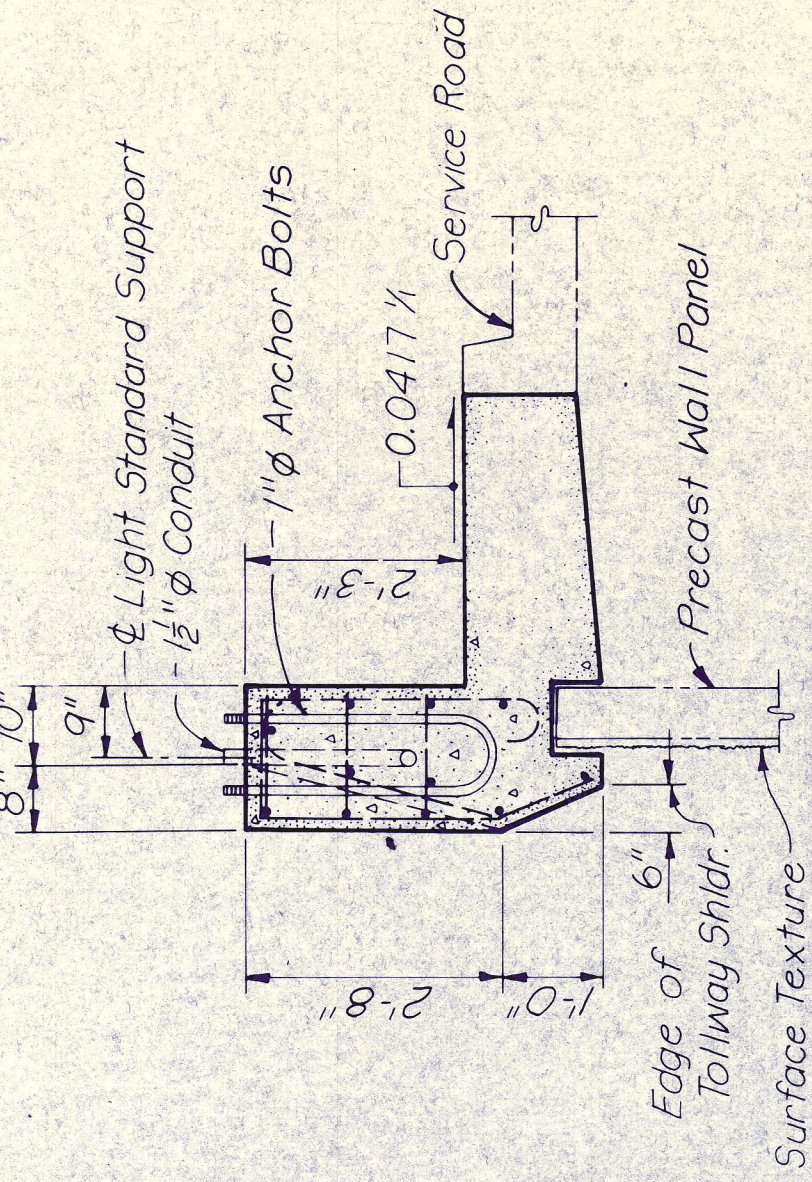
Cut footing reinforcing to fit inlets. 2nd and 4th longitudinal bars from toe are not cut.



SECTION A-A

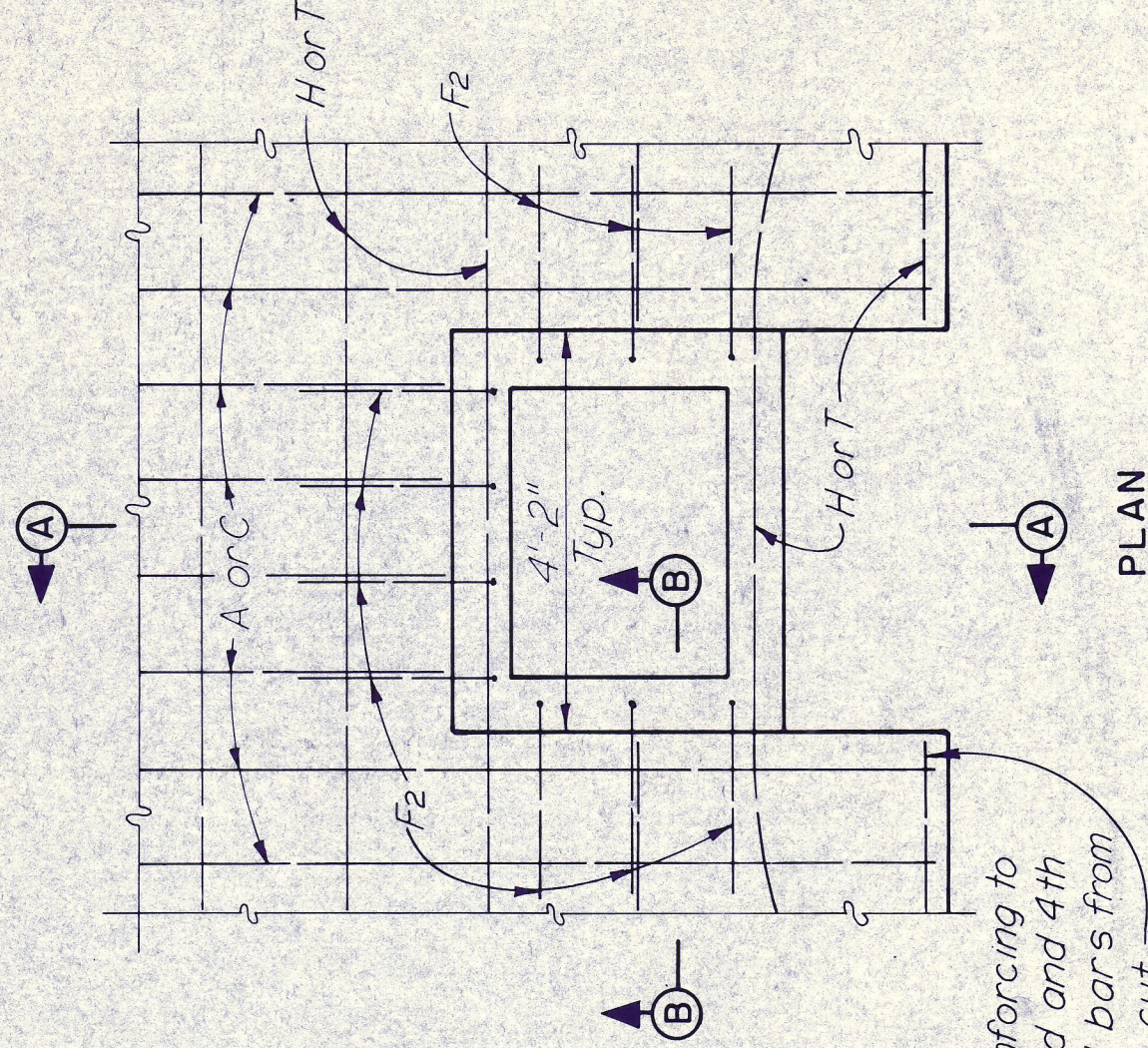


SECTION - C.I.P WALLS

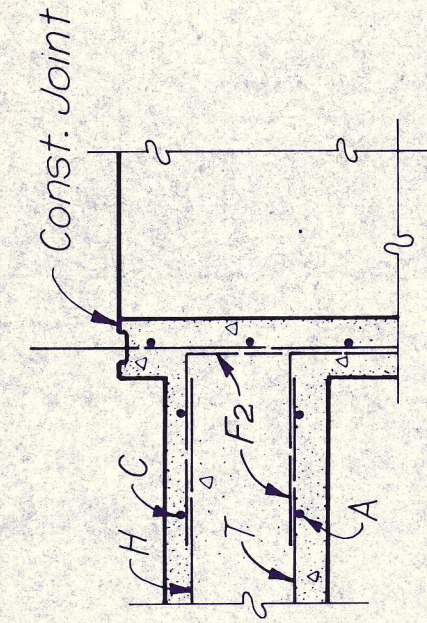


SECTION - PRECAST WALLS

LIGHT STANDARD SUPPORT DETAILS

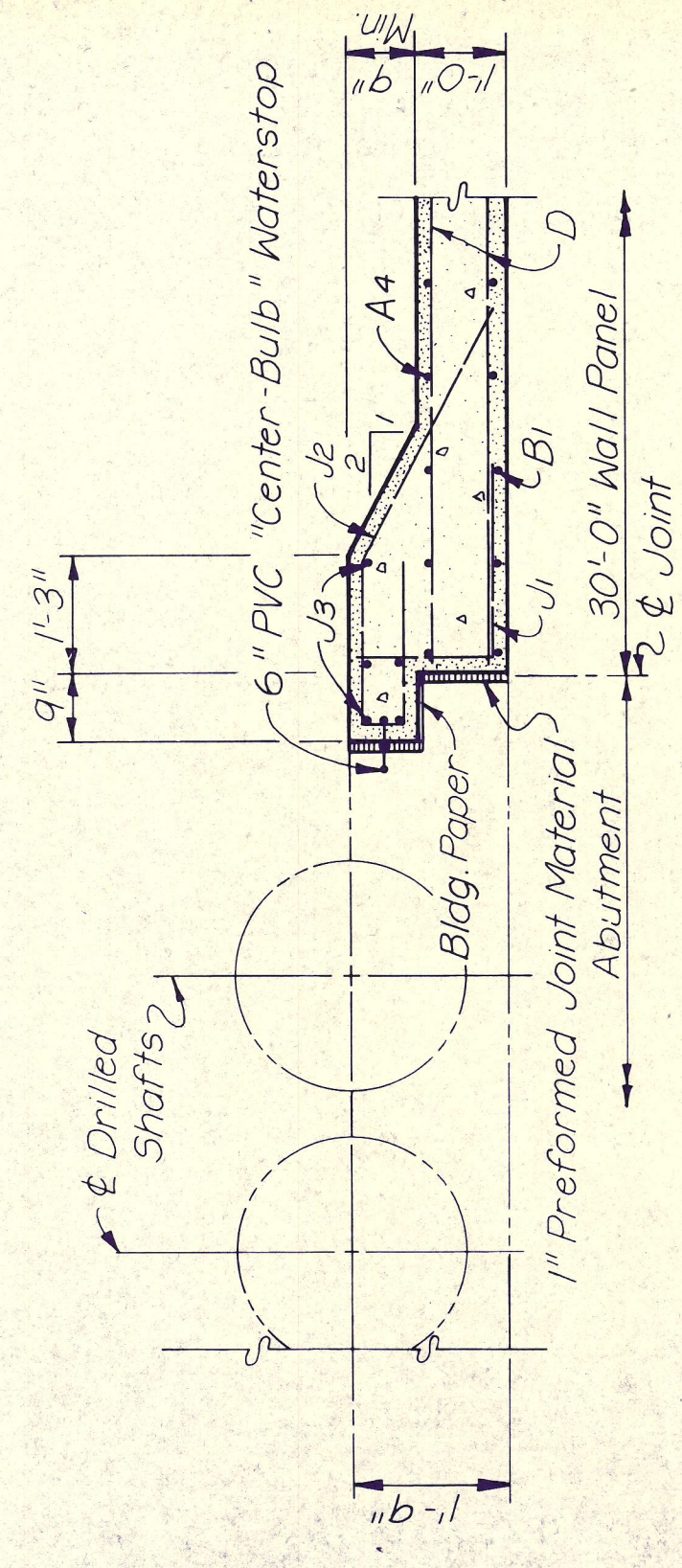


PLAN

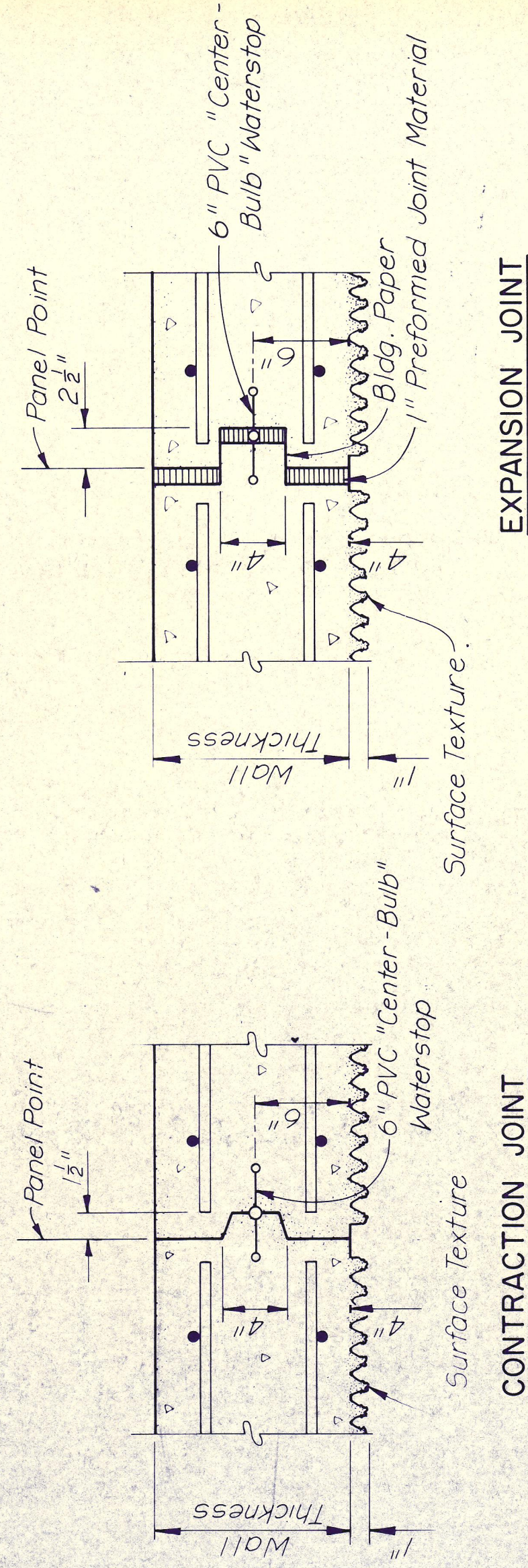


SECTION B-B

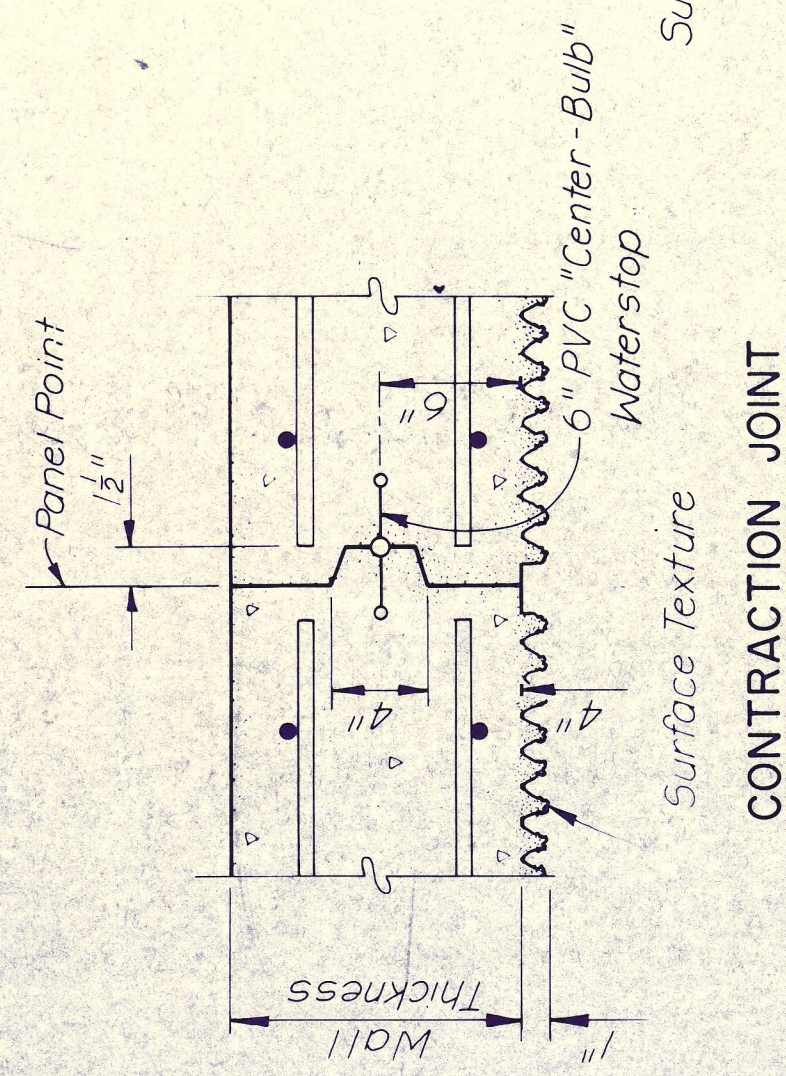
BOX INLET DETAILS



ABUTMENT CONNECTION



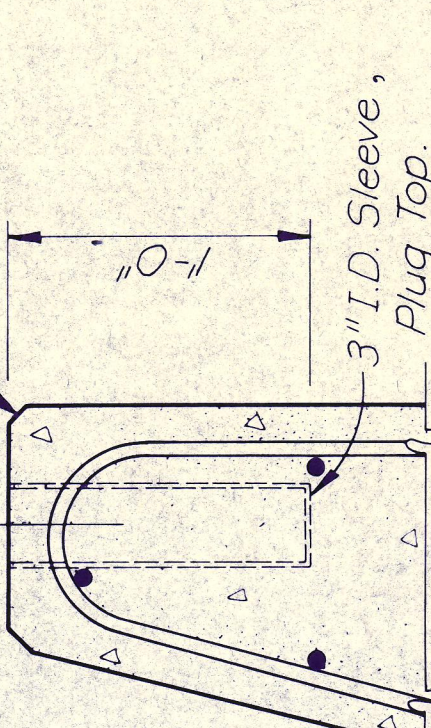
EXPANSION JOINT



CONTRACTION JOINT

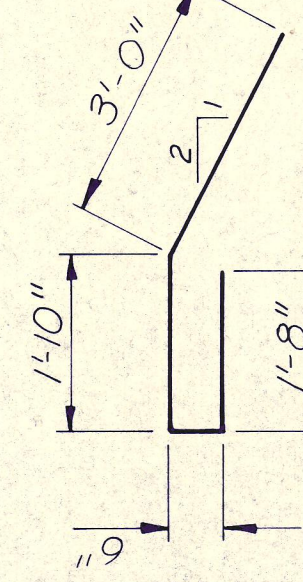
5" Fence Post @ 10'-0" (Max.) Centers.

3/8" Chamfer, Typ.

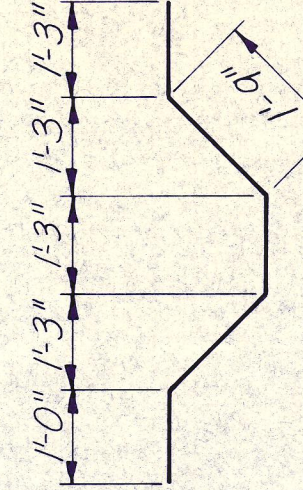


FENCE POST HOLE DETAIL

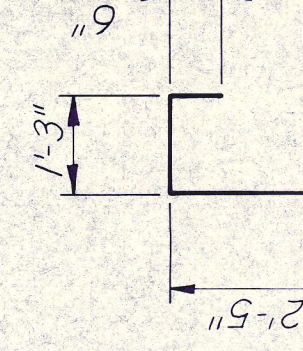
Note: For surface texture pattern details, see Standard Drawing No. 41.



BAR J2



BAR L2



BAR J1 & F2

Note: Reinforcing bars shall be #5, ASTM A-615, Grade 60.

BAR BENDING DIAGRAMS

FOOTING TRANSITION DETAILS

NO.	REVISION	BY	DATE
TEXAS TURNPIKE AUTHORITY			
DALLAS NORTH TOLLWAY			
DEPRESSED ROADWAY SECTION			
CAST-IN-PLACE CONCRETE			
RETAINING WALL DETAILS			
HNTB			SECTION VII
HOWARD NEEDLES TAMMEN & BERGENDOFF			
DRAWN	J.T.K.	DATE	4-6-83
CHECKED	Y.A.L.	DATE	5-9-83
DESIGNED	G.D.H.	DATE	3-20-83
SCALE	None		
STANDARD DRAWING NO. 43			