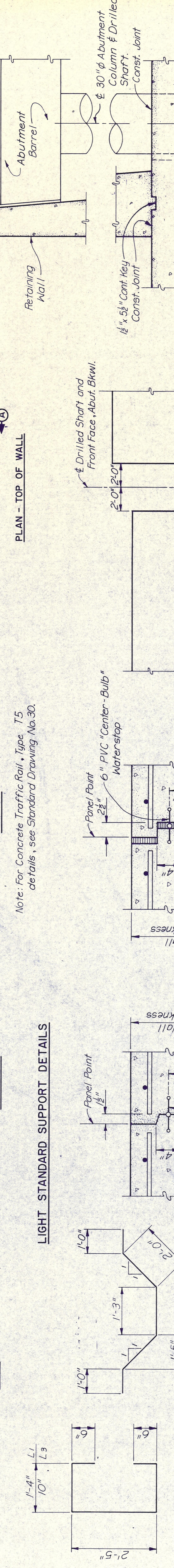


**PLAN**  
 Note: All light support reinforcing bars shall be #5, ASTM A-615, Grade 60.

**ELEVATION**  
 Note: Light standard supports shall not be paid for directly, but shall be considered subsidiary to Item 450, Traffic Rail, Type "T5".

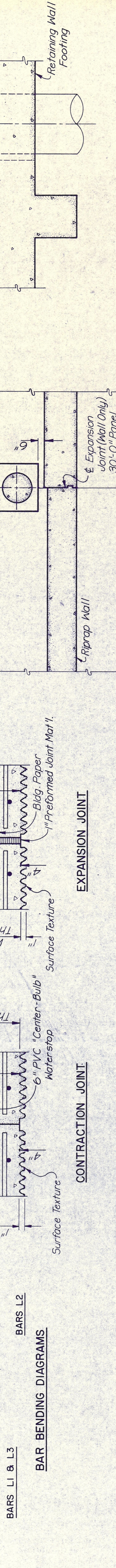
**SECTION**  
 Note: For Concrete Traffic Rail, Type T5 details, see Standard Drawing No. 30.



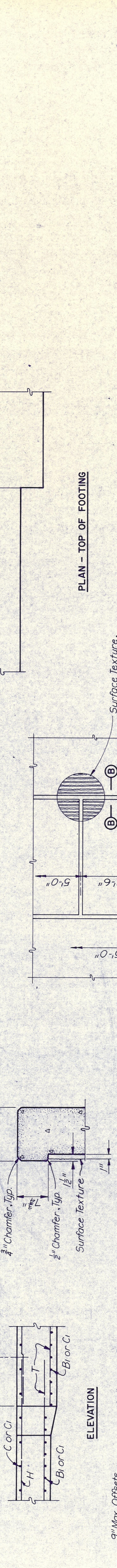
**PLAN**  
 Note: All light support reinforcing bars shall be #5, ASTM A-615, Grade 60.

**ELEVATION**  
 Note: Light standard supports shall not be paid for directly, but shall be considered subsidiary to Item 450, Traffic Rail, Type "T5".

**SECTION**  
 Note: For Concrete Traffic Rail, Type T5 details, see Standard Drawing No. 30.

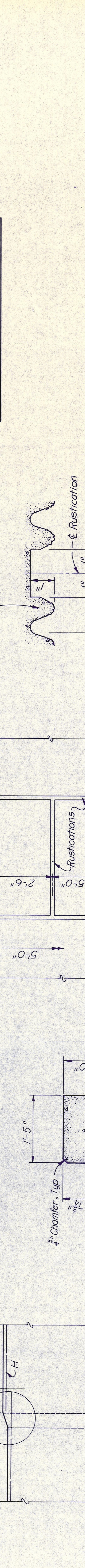


**BAR BENDING DIAGRAMS**



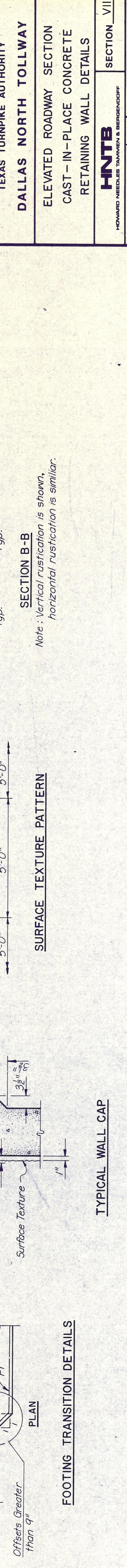
**CONTRACTION JOINT**

**EXPANSION JOINT**



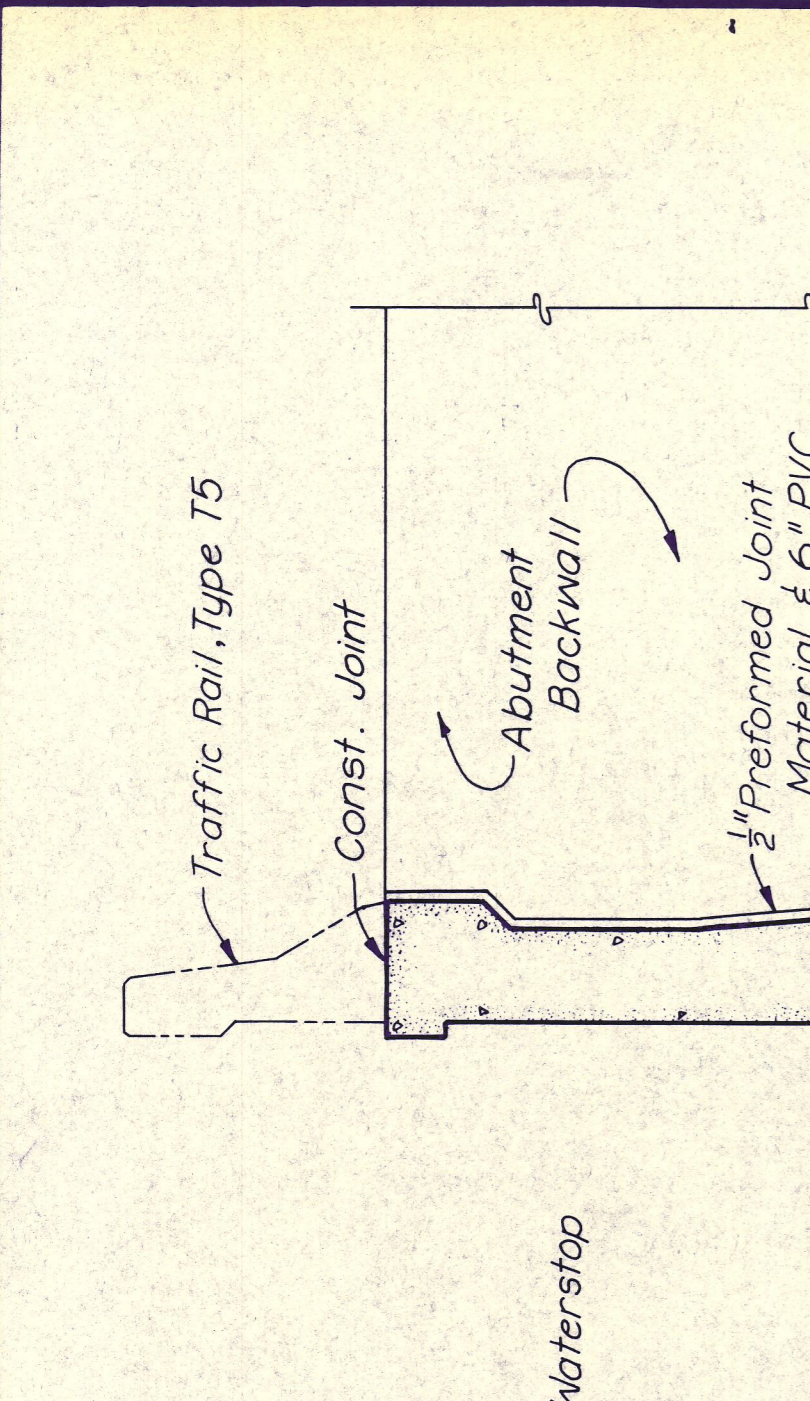
**WALL CAP AT RIPRAP**

**TYPICAL WALL CAP**



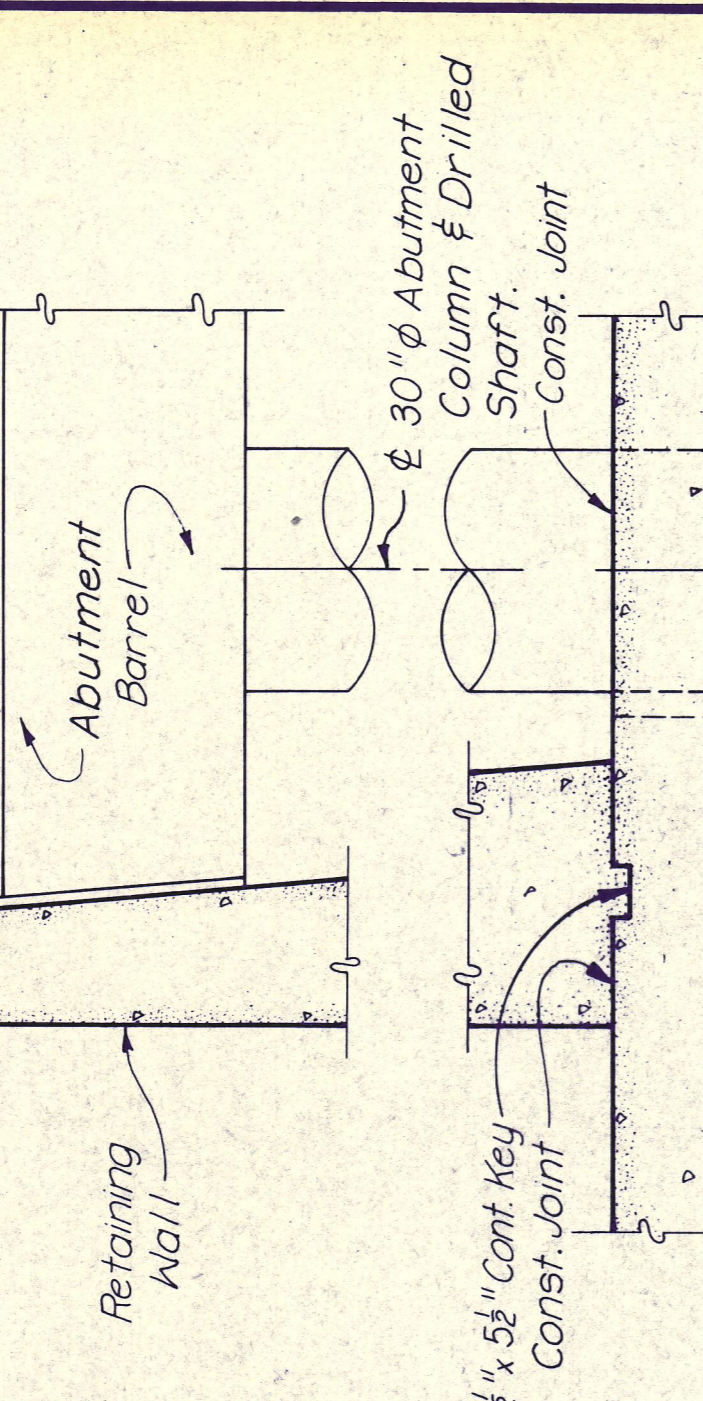
**FOOTING**

**FOOTING TRANSITION DETAILS**



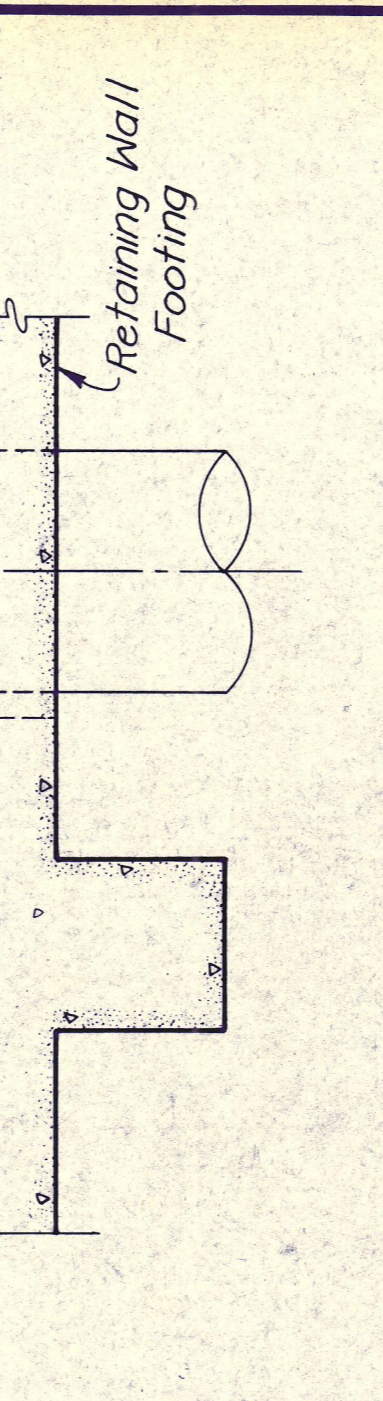
**PLAN - TOP OF WALL**

**SECTION A-A**



**PLAN - TOP OF FOOTING**

**SECTION B-B**



**SURFACE TEXTURE PATTERN**

Note: Vertical rustication is shown, horizontal rustication is similar.

**ABUTMENT CONNECTION DETAILS**

NO.	REVISION	BY	DATE
TEXAS TURNPIKE AUTHORITY <b>DALLAS NORTH TOLLWAY</b> ELEVATED ROADWAY SECTION CAST-IN-PLACE CONCRETE RETAINING WALL DETAILS			
<b>HNTB</b> HOWARD NEEDLES TAMMEN & BERGENDOFF		SECTION VII	
DRAWN	J.T.K.	DATE	4-8-83
CHECKED	J.A.L.	DATE	5-3-83
		DESIGNED	G.D.H.
		SCALE	4-8-83
STANDARD DRAWING NO. 41			