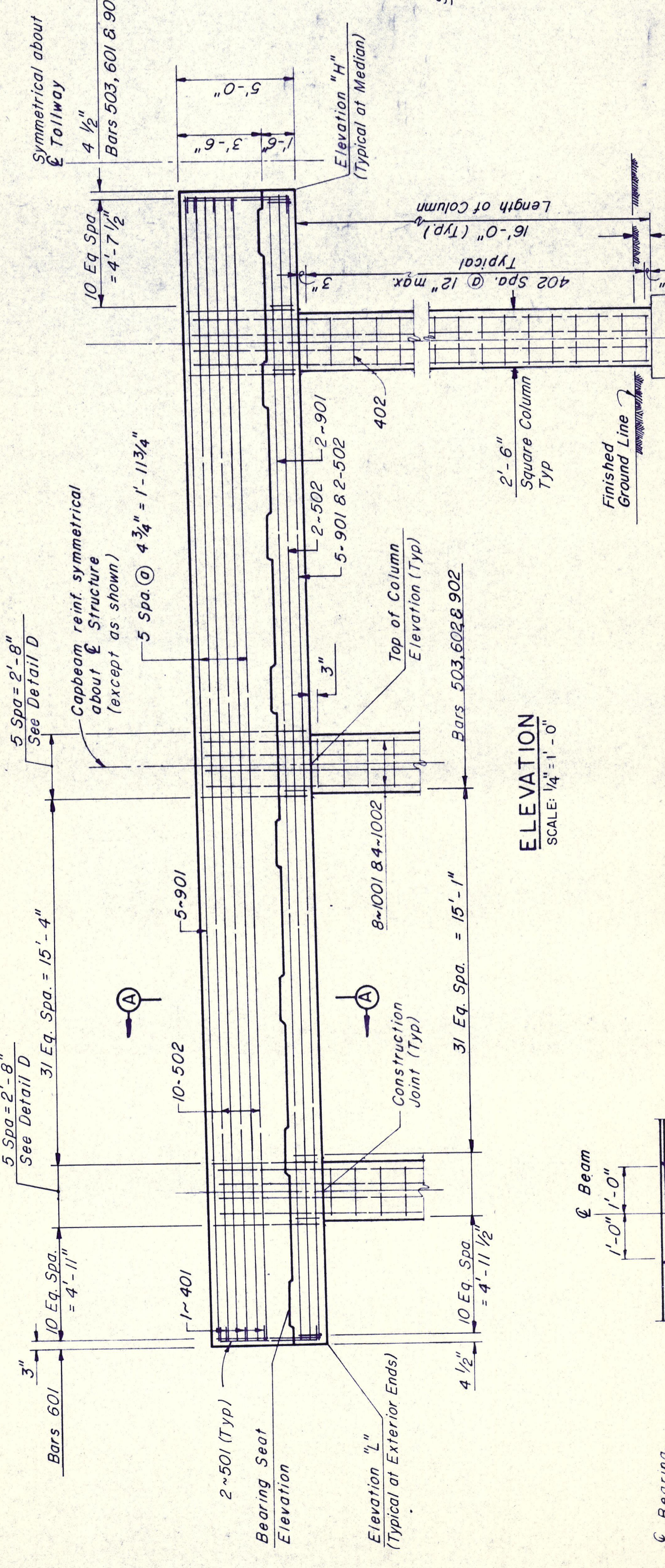
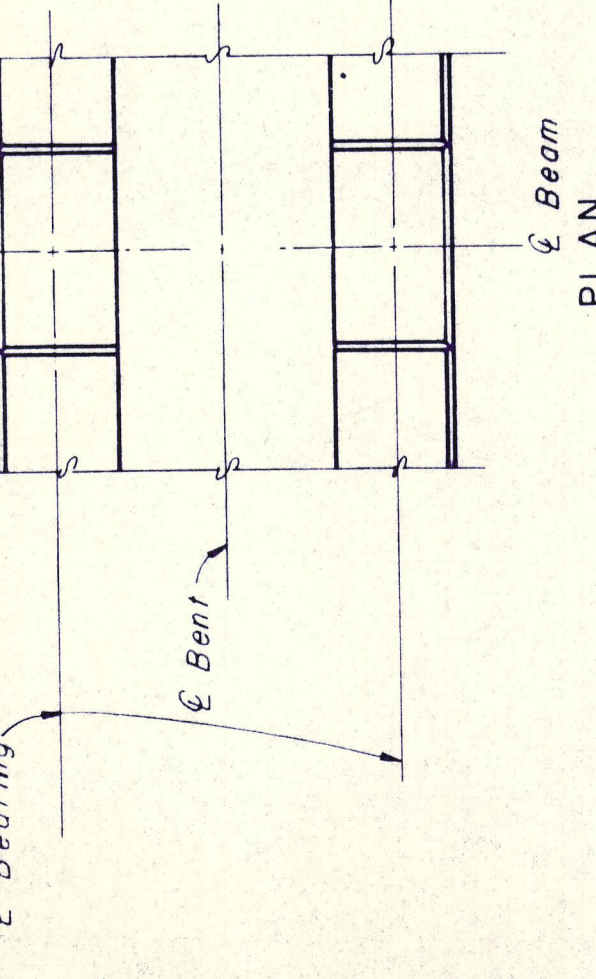


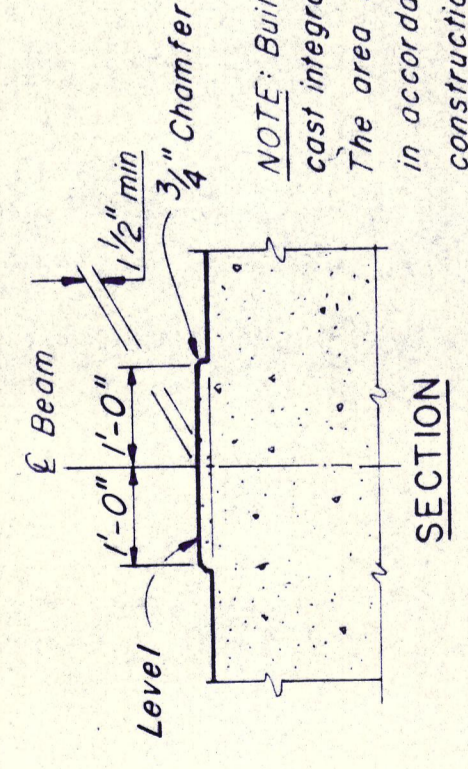
PLAN
SCALE: 1/4" = 1'-0"



ELEVATION
SCALE: 1/4" = 1'-0"

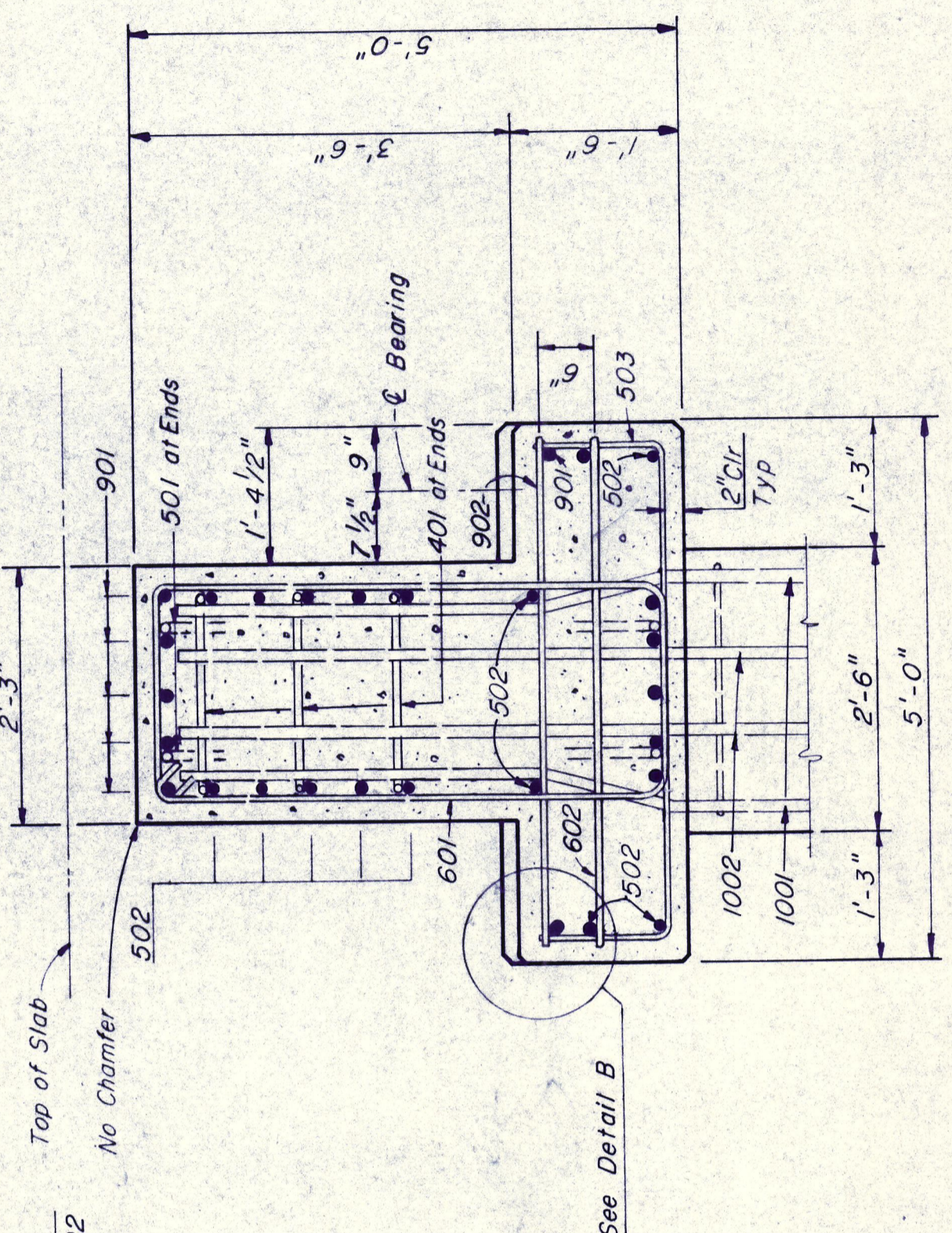


BEARING SEAT DETAILS
SCALE: 1/2" = 1'-0"



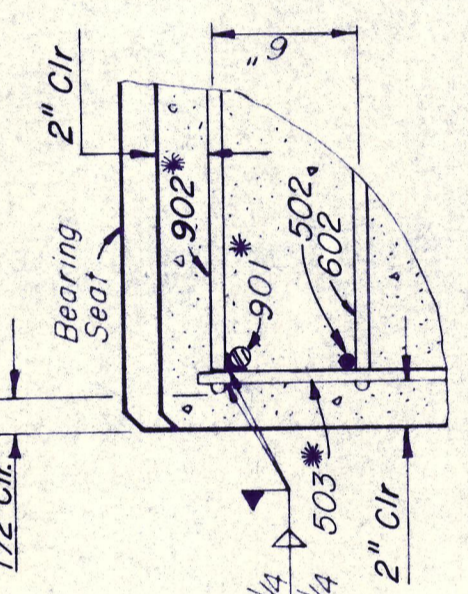
SECTION

NOTE: Built-up portions of bearing seat shall be cast integrally with cap or constructed as follows: The area under the built-up portion is to be prepared in accordance with specification requirements for construction joints. The pedestal shall then be placed using an approved pre-packaged, non-shrink, impact resistant grout containing non-metallic fibers, similar to Set "Impact Resistant Grout." The grout shall be mixed and applied in accordance with the manufacturer's recommendations.



SECTION A-A
SCALE: 3/4" = 1'-0"

NOTES: 1. Contractor's attention is being directed to the requirements of the latest edition of the Structural Welding Code for Reinforcing Steel published by the American Welding Society. The preheat requirements of Section 5.2 and the proper welding rods, as defined in Table 5.1, must be strictly adhered to.
2. Bars marked with an asterisk (*) in the Bill of Reinforcing Steel shall conform to the requirements of ASTM A-706, Grade 60.



DETAIL B
SCALE: 1/2" = 1'-0"

GENERAL NOTES:

- All cast-in-place concrete to be Class C.
- Design $f'_c = 3,600$ psi
- Reinforcing steel shall be ASTM A-615, Grade 60.
- Chamfer all exposed capbeam edges $3/4"$, except the top of web edges.
- denotes the beam number.
- identifies the columns.
- For location of beam erection inserts to be cast into the capbeams, see Standard Drawing No. 26.
- For drilled shaft and column details see Sheet S6.
- Maximum drilled shaft load is 458.5k
- For Detail D see Sheet S6.

BENTS 1E & 2E

BENTS 1W & 2W

BENT DATA

LOCATION	BEARING SEAT ELEVATIONS																TOP OF COLUMN ELEVATIONS																	
	1	2	3	4	5	6	7	8	9	10	11	12	13	14	15	16	A	B	C	D	E	F	ELEV "H"	ELEV "L"										
SPAN 1	632.14	632.24	632.34	632.44	632.55	632.65	632.75	632.85	632.95	633.05	633.15	633.25	633.35	633.45	633.55	633.65	630.88	631.17	631.45	631.74	632.02	632.30	630.88	631.17	631.45	631.74	632.02	632.30	630.88	631.17	631.45	631.74	632.02	632.30
1	632.16	632.26	632.36	632.46	632.57	632.67	632.77	632.87	632.97	633.07	633.17	633.27	633.37	633.47	633.57	633.67	630.88	631.17	631.45	631.74	632.02	632.30	630.88	631.17	631.45	631.74	632.02	632.30	630.88	631.17	631.45	631.74	632.02	632.30
2	632.44	632.54	632.64	632.74	632.85	632.95	633.05	633.15	633.25	633.35	633.45	633.55	633.65	633.75	633.85	633.95	630.88	631.17	631.45	631.74	632.02	632.30	630.88	631.17	631.45	631.74	632.02	632.30	630.88	631.17	631.45	631.74	632.02	632.30
3	632.45	632.55	632.65	632.75	632.86	632.96	633.06	633.16	633.26	633.36	633.46	633.56	633.66	633.76	633.86	633.96	630.88	631.17	631.45	631.74	632.02	632.30	630.88	631.17	631.45	631.74	632.02	632.30	630.88	631.17	631.45	631.74	632.02	632.30

NO. _____ REVISION _____ BY _____ DATE _____

TEXAS TURNPIKE AUTHORITY
DALLAS NORTH TOLLWAY
KELLER SPRINGS ROAD OVERPASS
BENT DETAILS

Gibbs & Hill, Inc.
ENGINEERS DESIGNERS CONSTRUCTORS
DALLAS

SECTION VII
DRAWN: JEP DATE: 8-10-83 DESIGNED: REF DATE: 8-8-83
CHECKED: REF DATE: 8-11-83 SCALE: AS SHOWN

CONTRACT NO. DNT-115 SHEET S.5 OF S.21