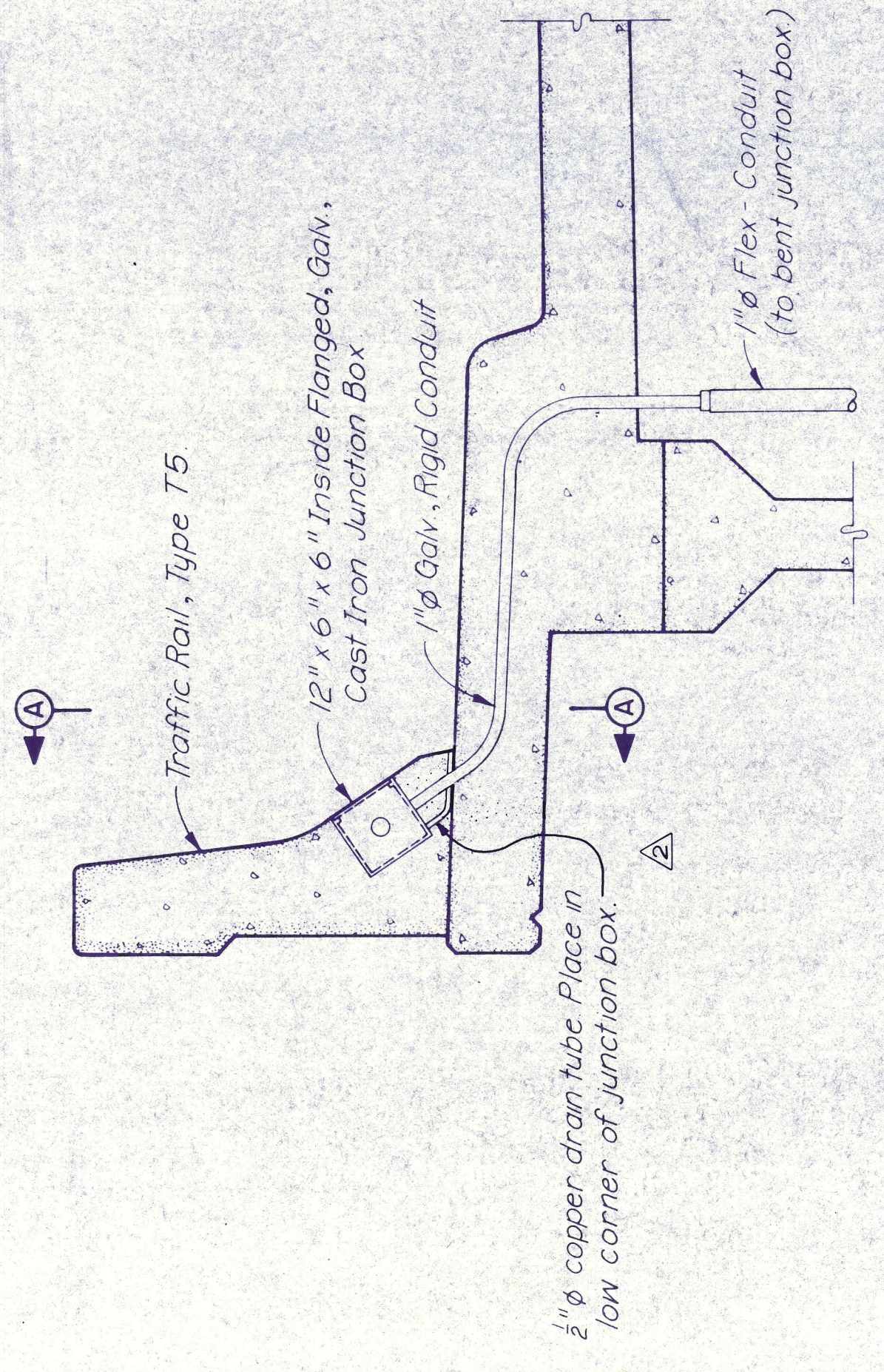
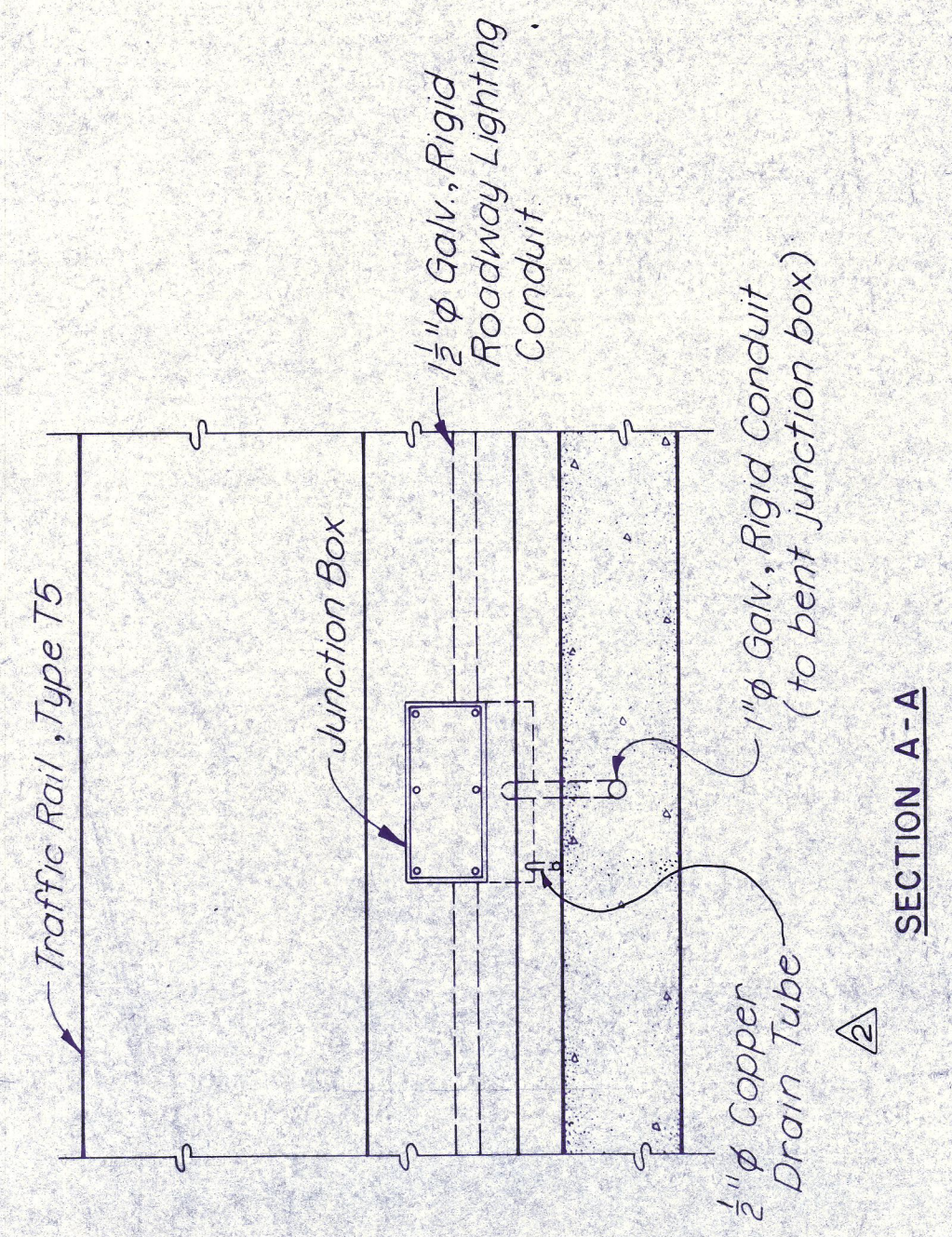


GENERAL NOTES:

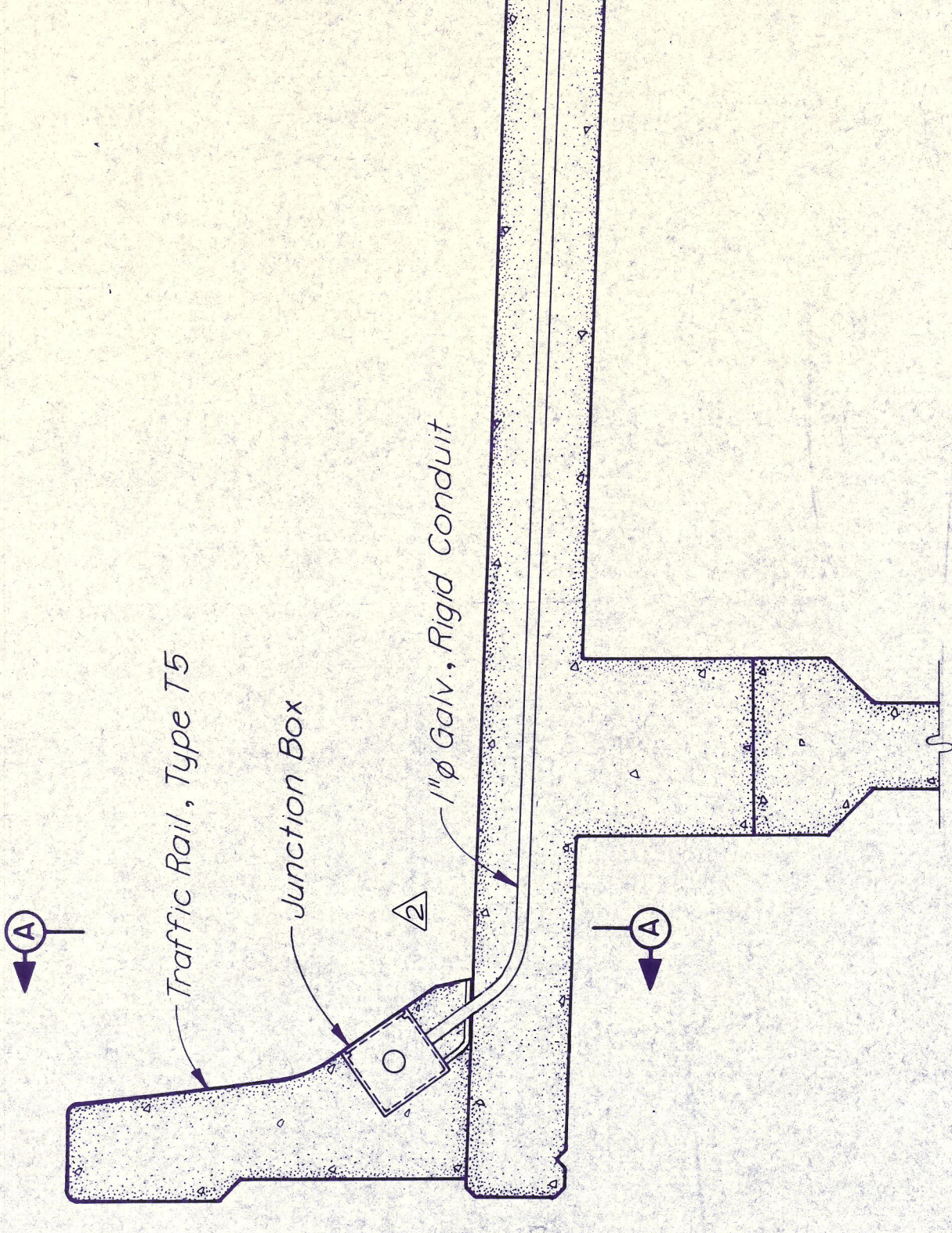
Embedded conduit, junction boxes, and related items pertinent to the roadway lighting system shall conform to the requirements of Item 618, "Conduit". Surface mounted rigid conduit, flexible conduit, junction boxes, luminaires, and related items pertinent to the roadway lighting system shall conform to the requirements of Special Specification 759, "Roadway Illumination".



3'-0" SHOULDER

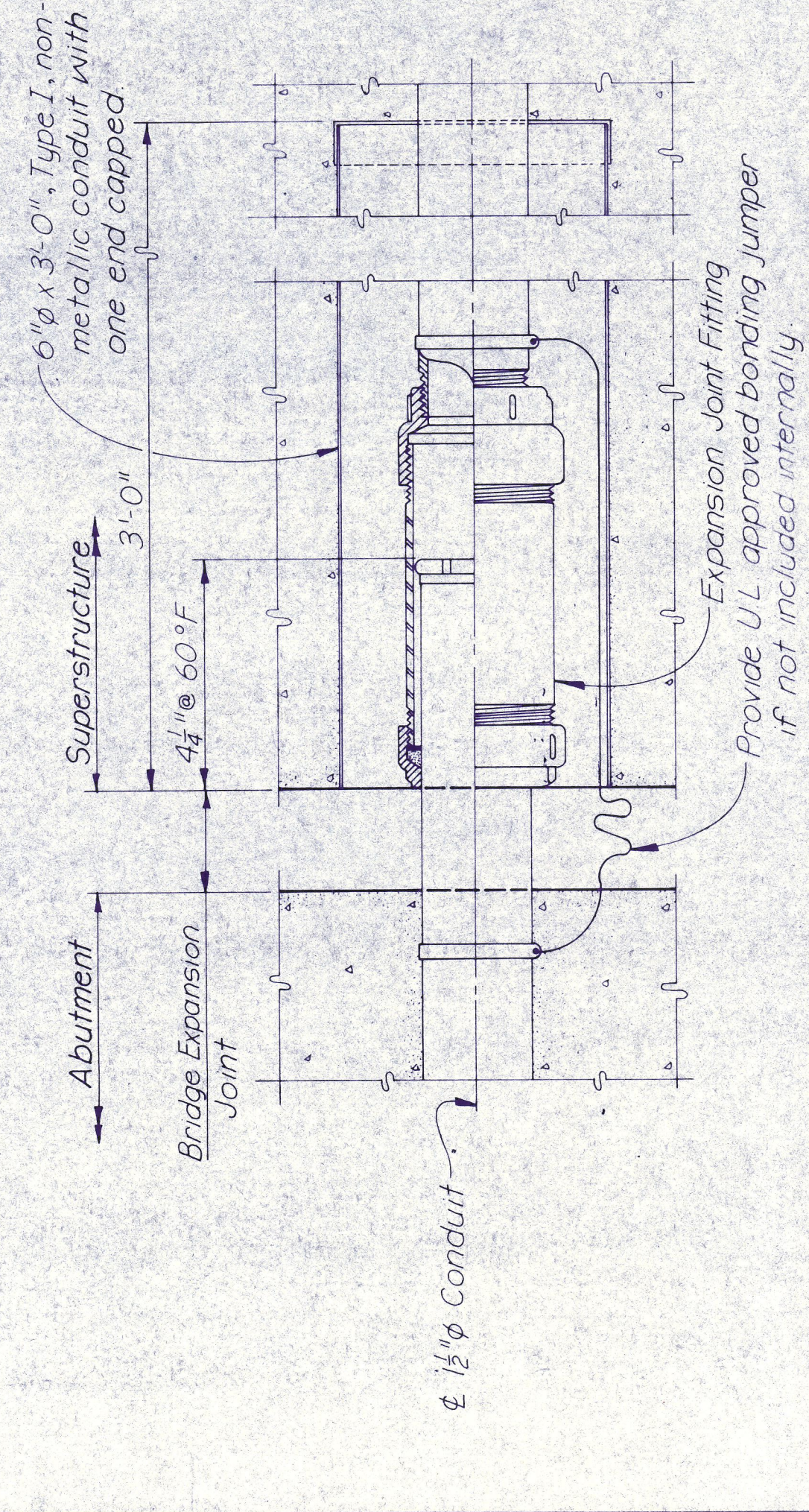


SECTION A-A

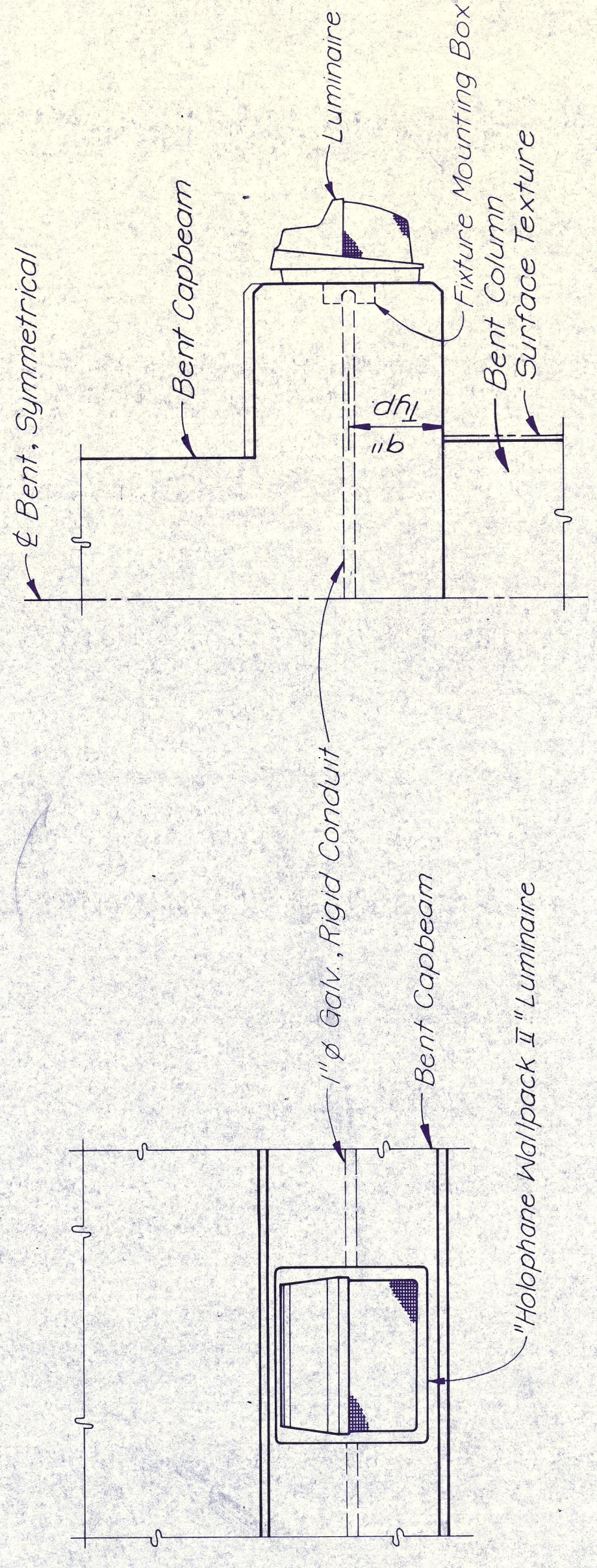


10'-0" SHOULDER

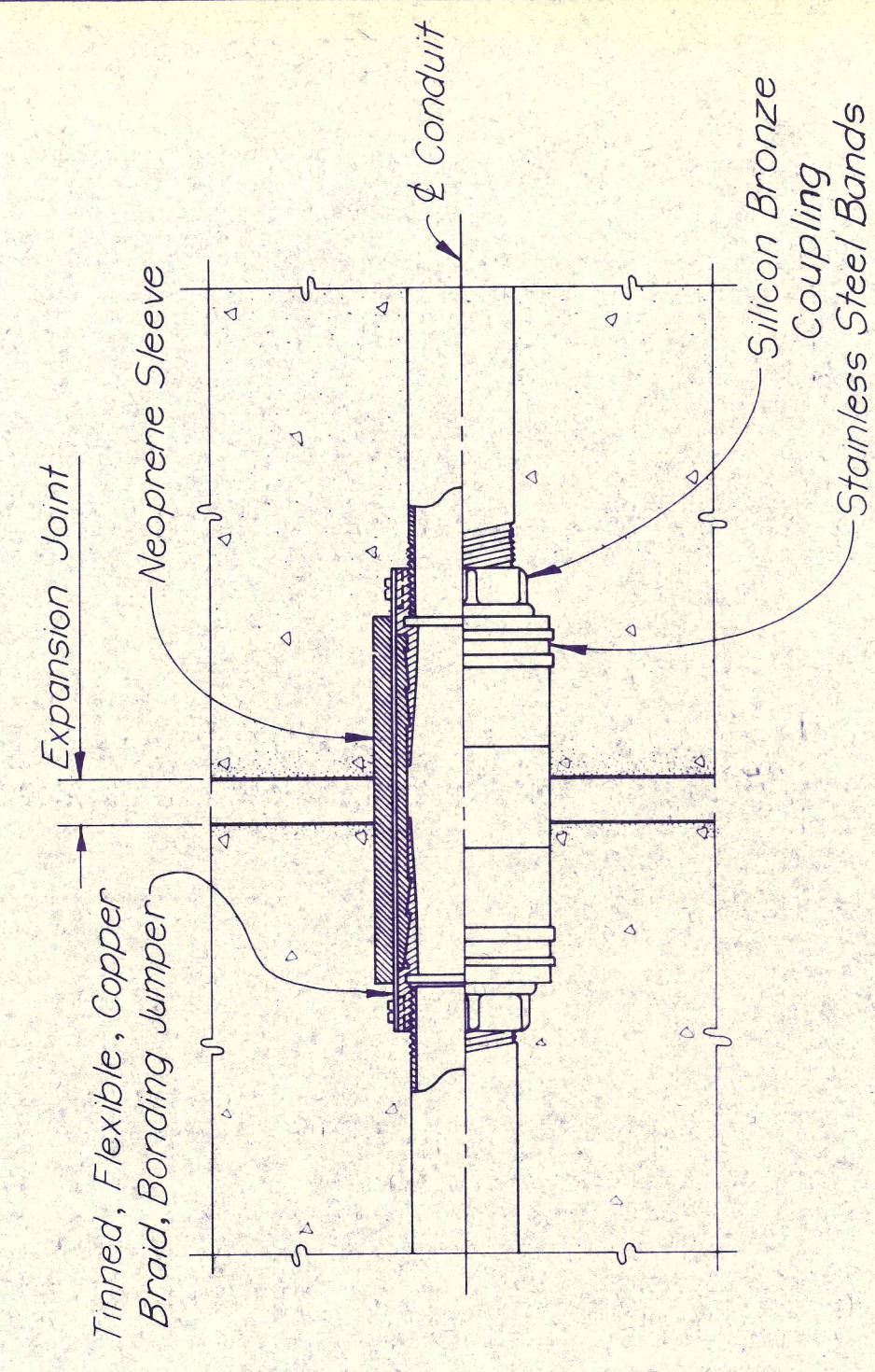
UNDERBRIDGE LIGHTING CONDUIT DETAILS



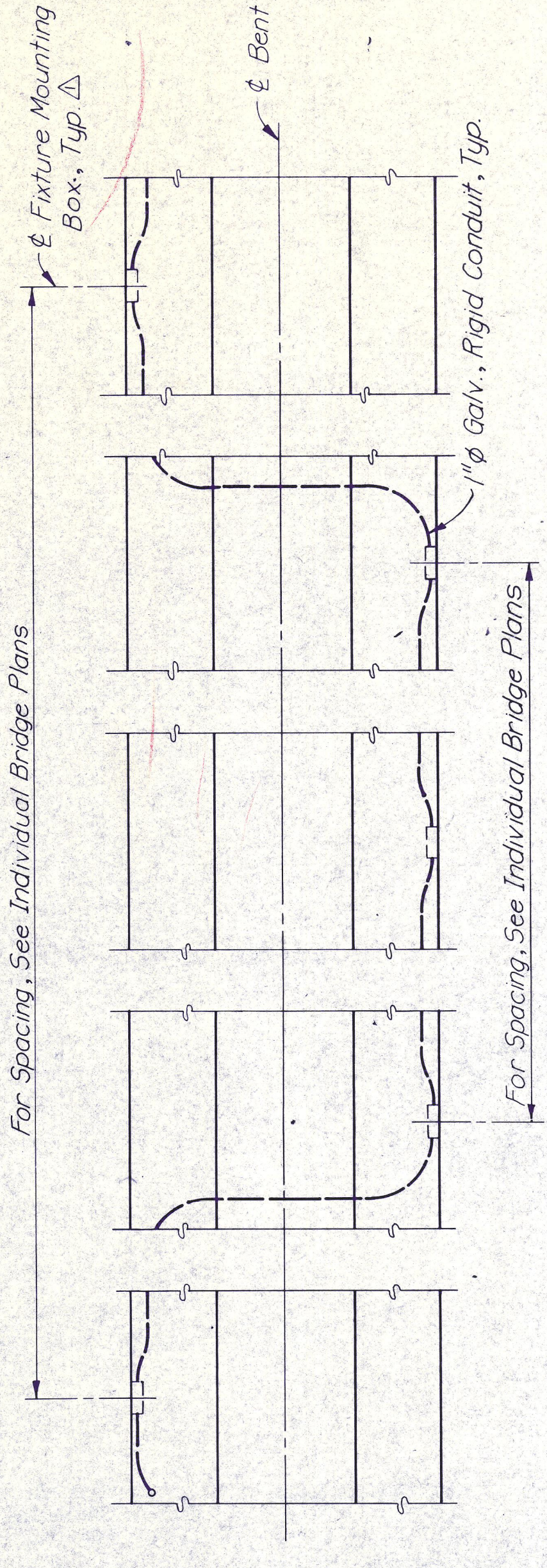
EXPANSION FITTING DETAIL



FRONT ELEVATION

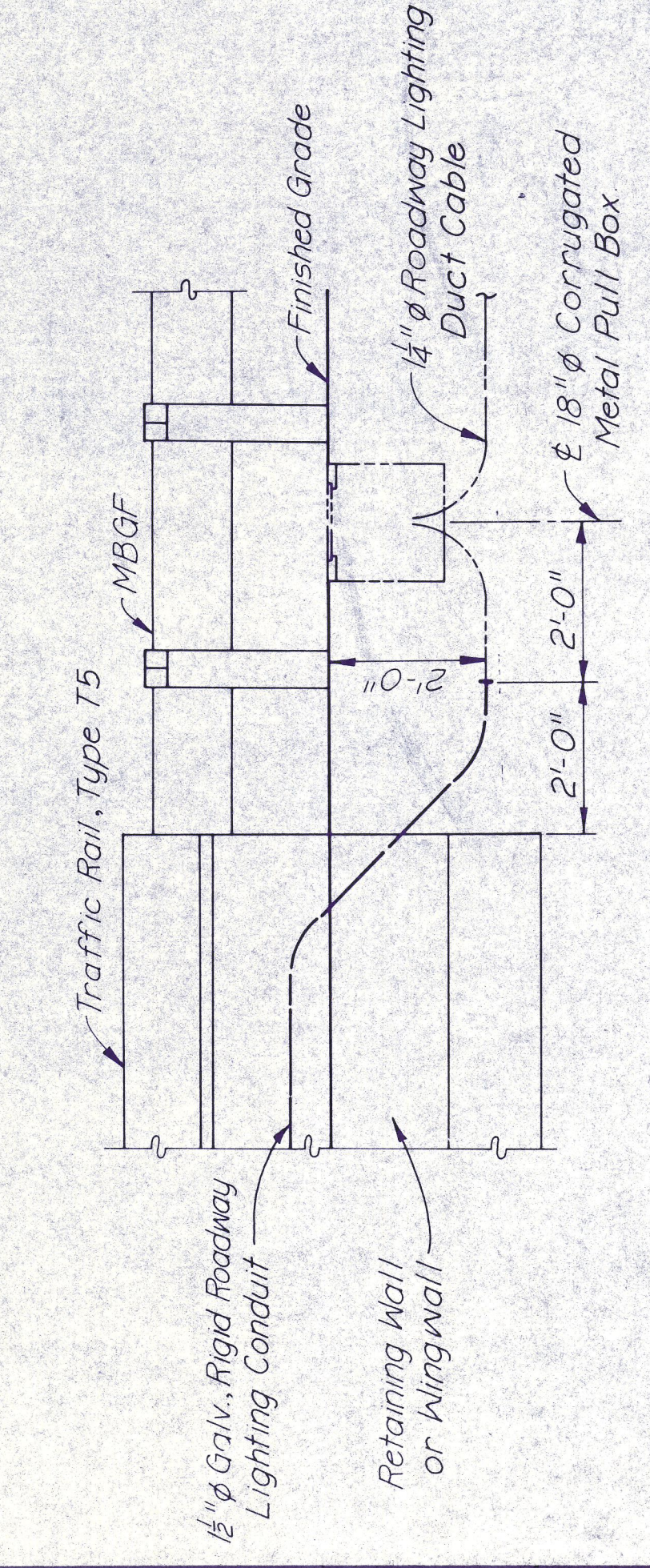


EXPANSION & DEFLECTION JOINT FITTING



PLAN

OVERPASS BRIDGE BENT MOUNTING



STRUCTURAL CONDUIT TERMINAL DETAIL

NO.	REVISION	BY	DATE
1	Junction Box Drain	WMB	8-20-84
2	Fixture Mounting Box	JK	8-15-84

TEXAS TURNPIKE AUTHORITY
DALLAS NORTH TOLLWAY

MISCELLANEOUS ELECTRICAL DETAILS

HNTB
SECTION VII

HOWARD NEEDLES TAMMEN & BERGENCOFF
DESIGNED G.D.H. DATE 8-25-83
DRAWN J.T.K. DATE 8-29-83
CHECKED G.D.H. DATE 10-19-83 SCALE NONE

STANDARD DRAWING NO. 37