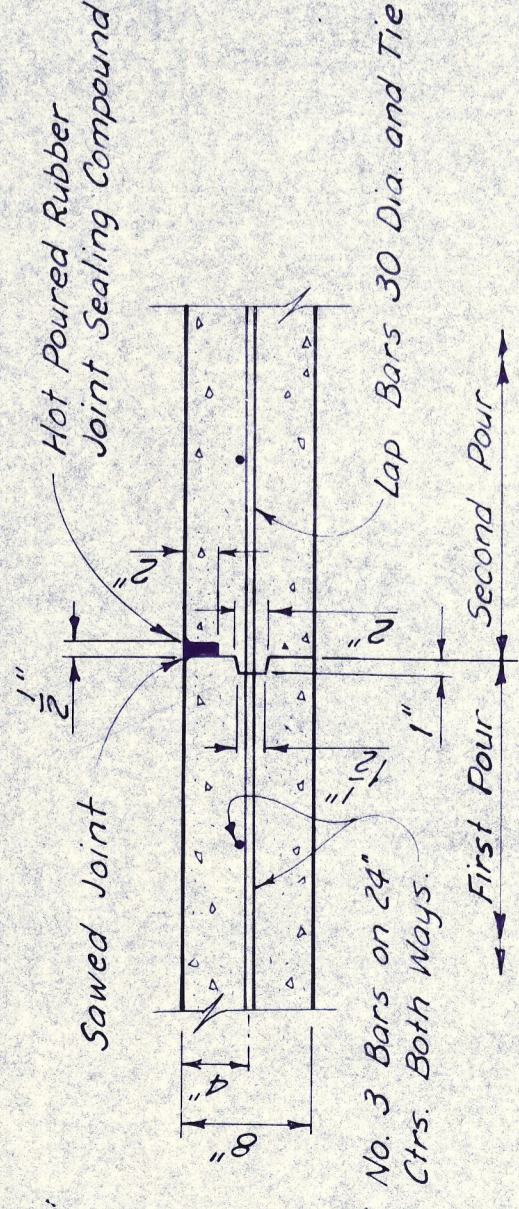


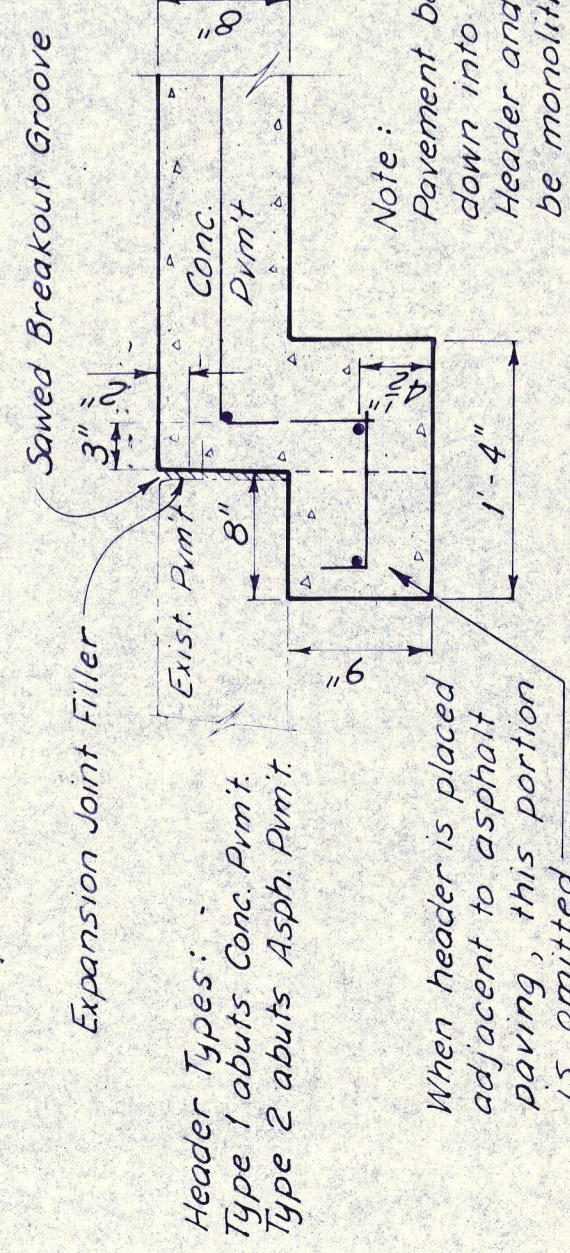
TRANSVERSE EXPANSION JOINT (E)

Scale: 1" = 1'-0"



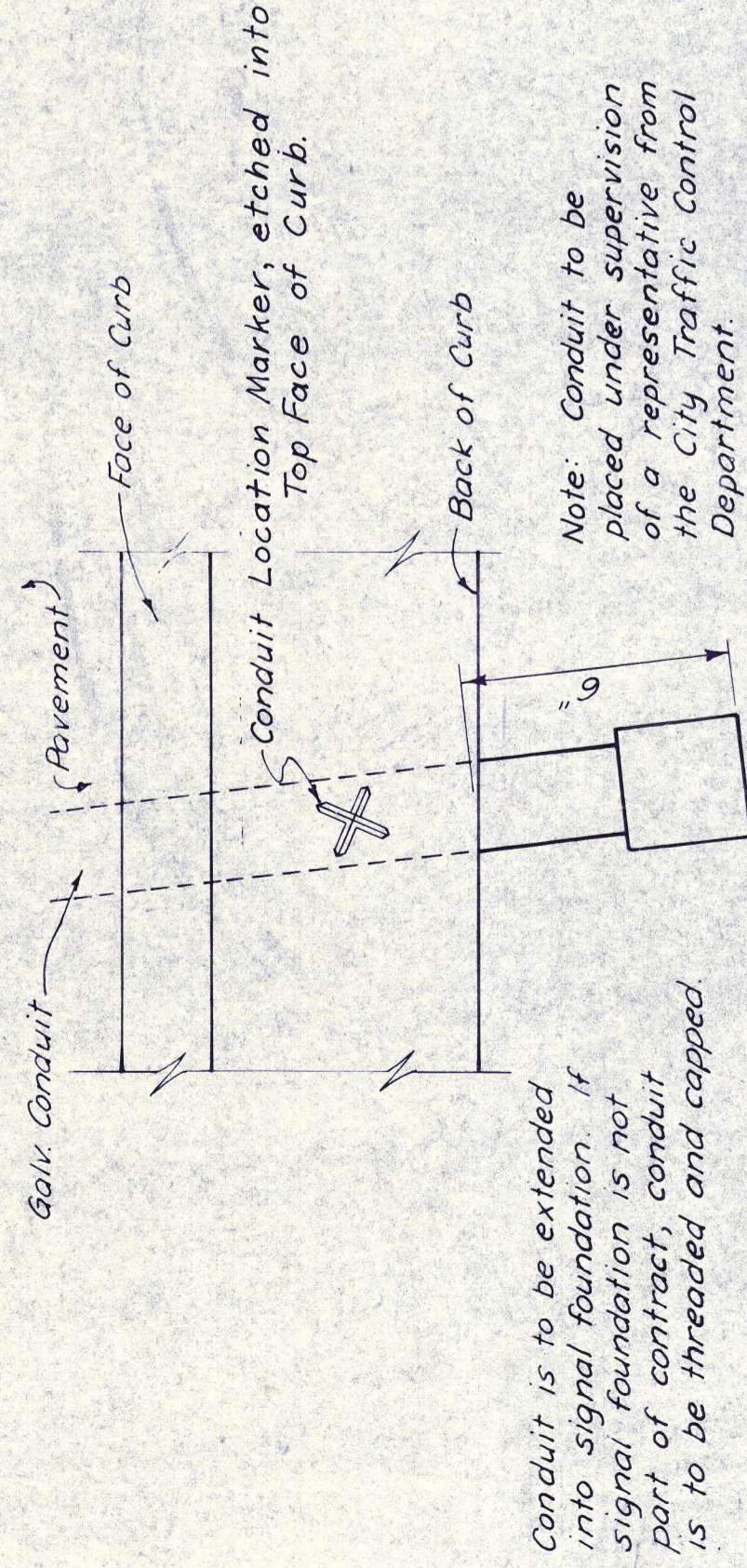
CONSTRUCTION JOINT (C)

Scale: 1" = 1'-0"
(Longitudinal and Transverse)



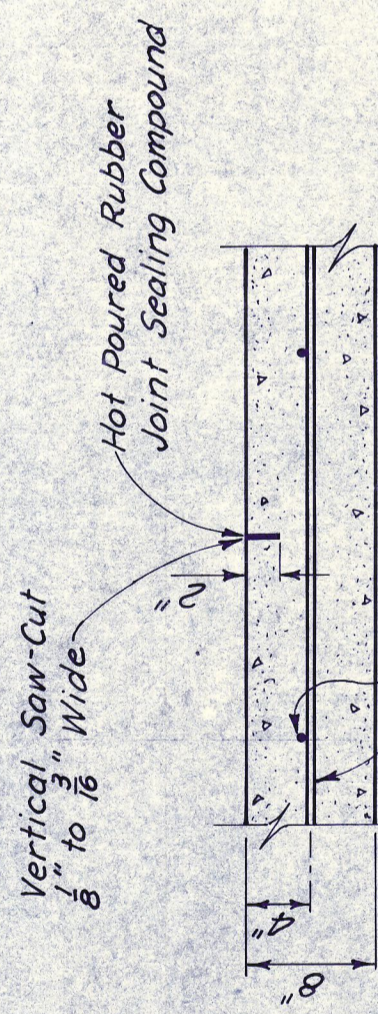
STREET HEADER

Scale: 1" = 1'-0"



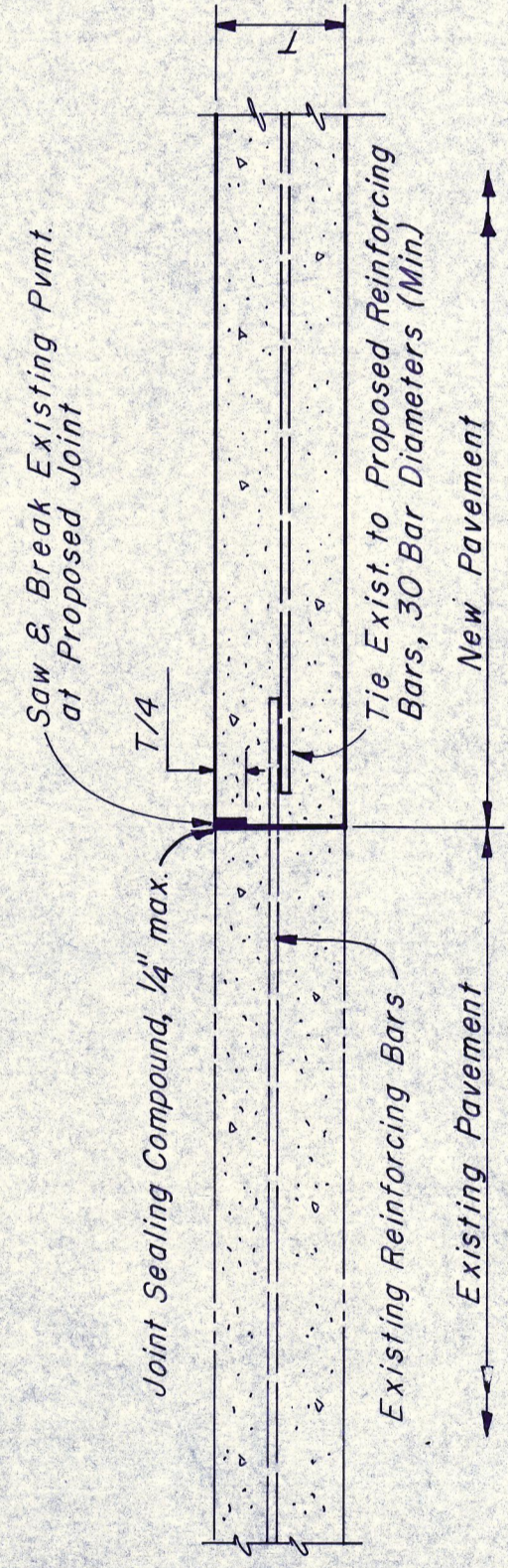
DETAIL OF CONDUIT MARKER

No Scale



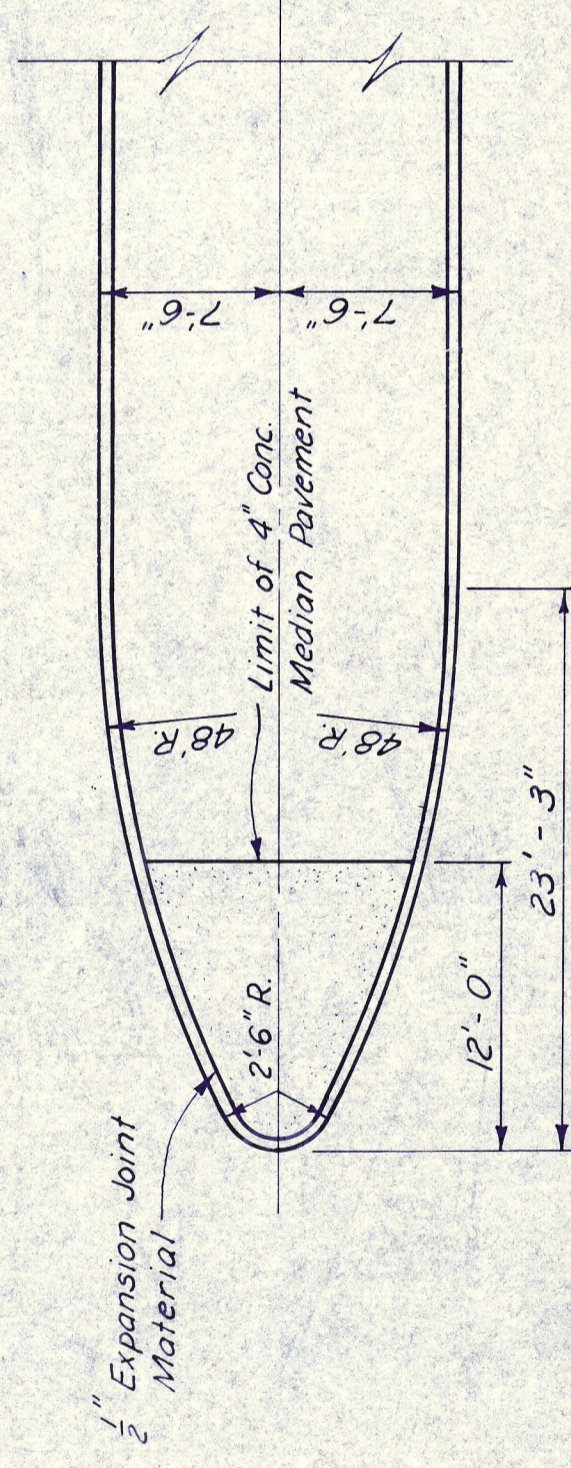
SAWED DUMMY JOINT (S)

Scale: 1" = 1'-0"
(Longitudinal and Transverse)



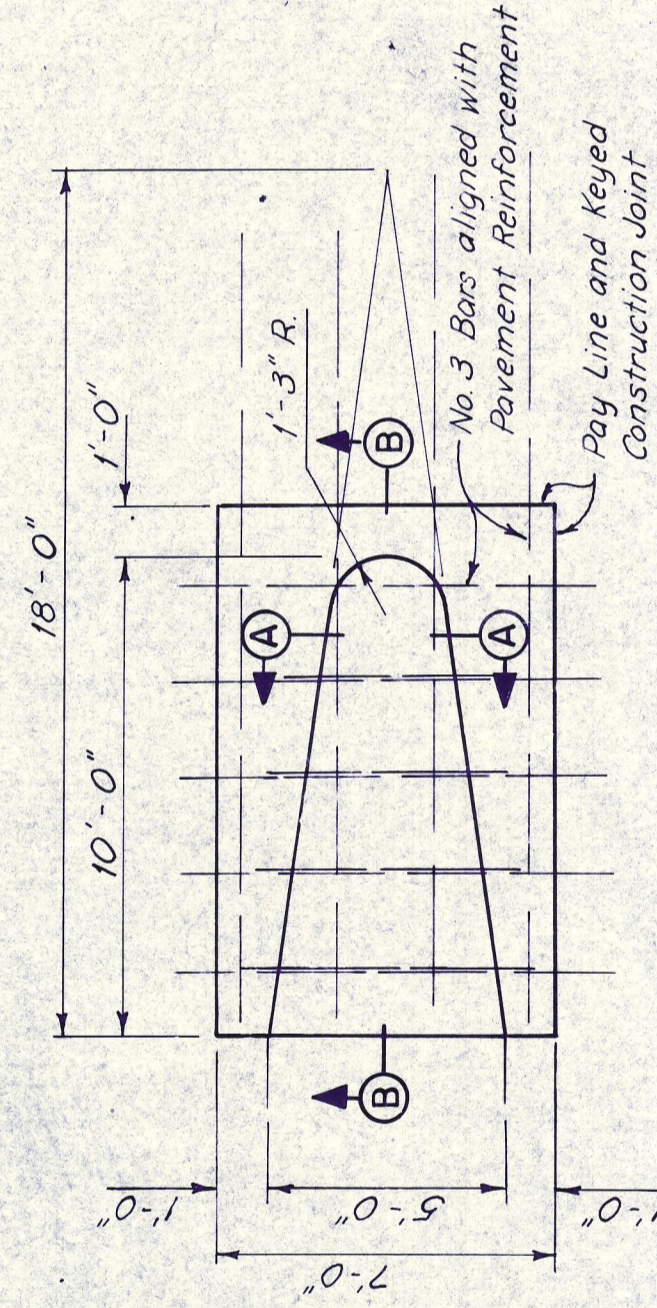
SPECIAL CONSTRUCTION JOINT (SP)

Scale: 1" = 1'-0"



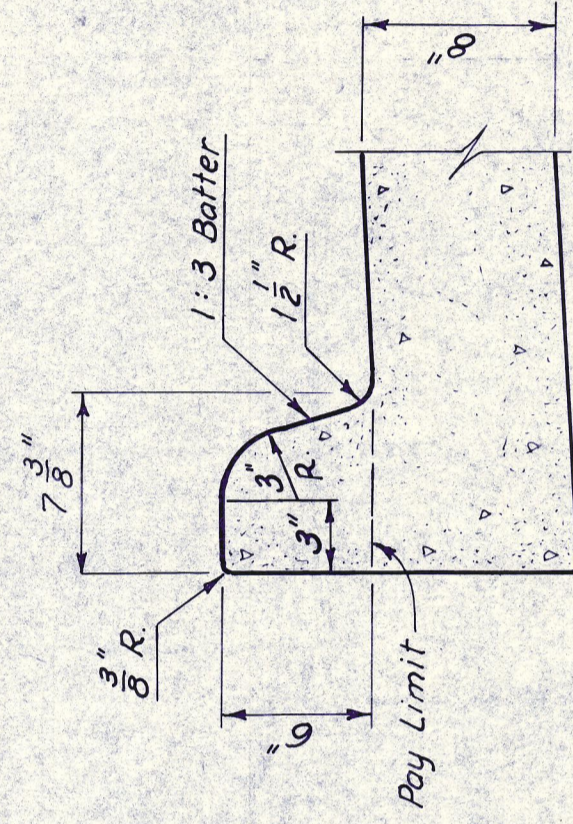
DETAIL OF NOSE FOR 15' WIDTH MEDIAN ISLAND

Scale: 3/8" = 1'-0"



MONOLITHIC MEDIAN NOSE

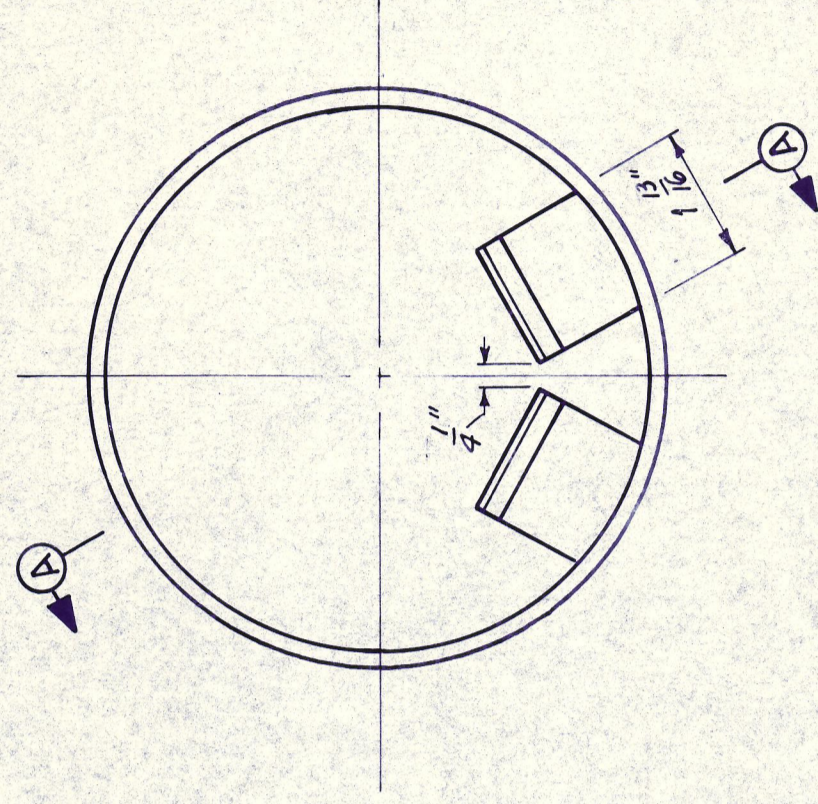
Note:
Monolithic median nose and pavement within pay lines shall be paid for per each, complete in place.



TYPE A CURB

Scale: 1/2" = 1'-0"

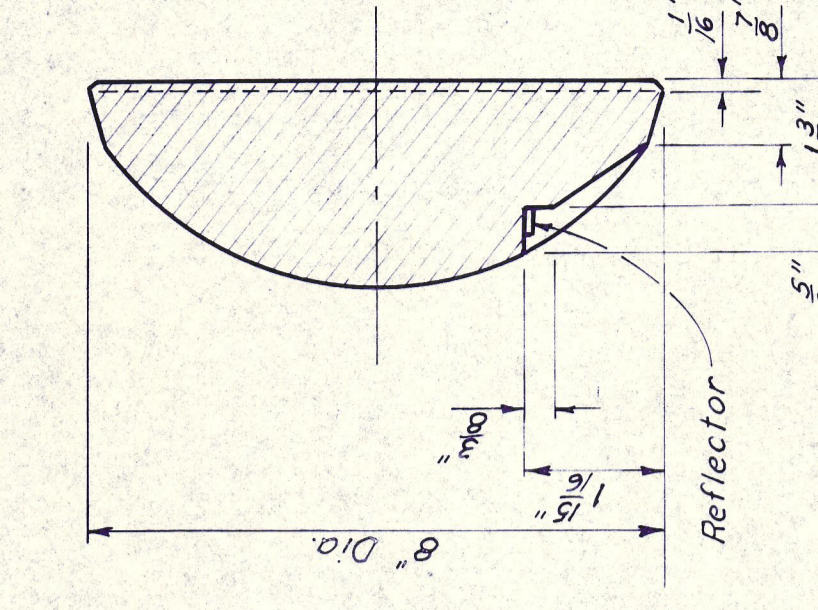
Note: See Standard Drawing No. 11 for Dowel Curb Detail.



PLAN

CHANNEL MARKER

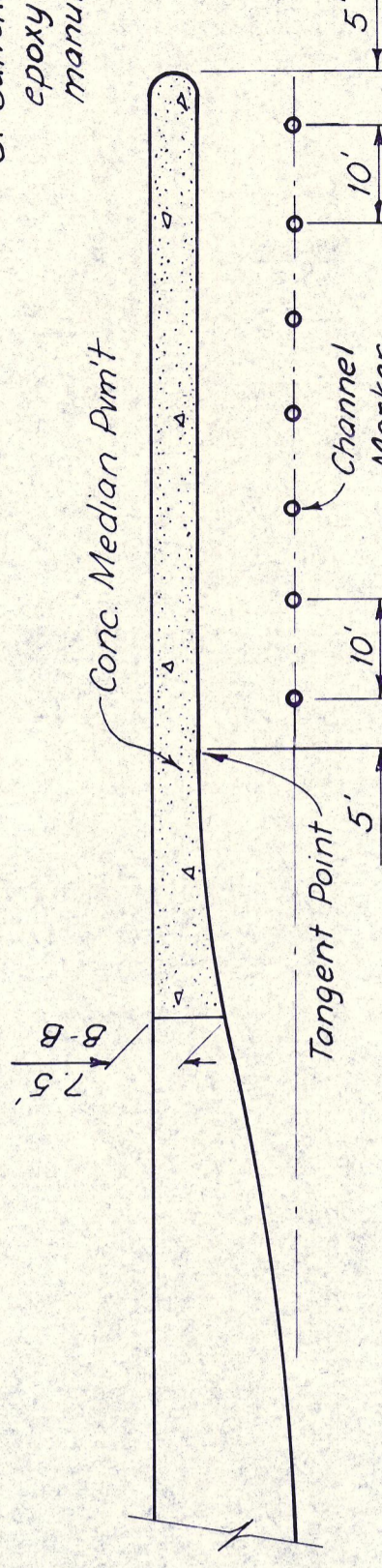
No Scale



SECTION A-A

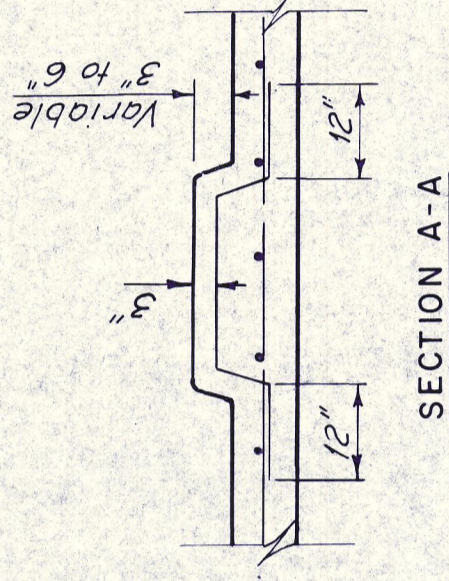
INSTALLATION NOTES:

- Buttons to be installed on 10' centers
- Left-Turn markers shall have a white base with white reflector lenses.
- Buttons shall be installed with approved epoxy bond in accordance with manufacturers specifications.

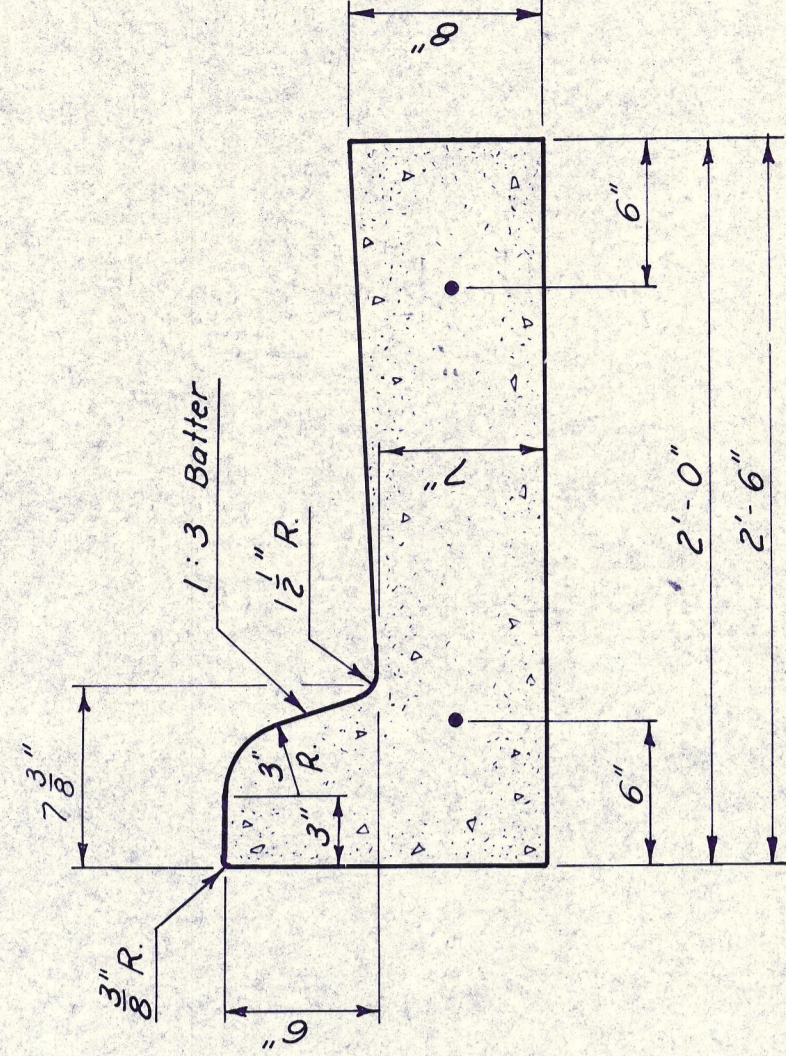


TYPICAL LEFT TURN LANE CHANNEL MARKER PLACEMENT

No Scale



SECTION A-A



2'-0" AND 2'-6" CURB AND GUTTER

Scale: 1/2" = 1'-0"

Reinforcement shall be No. 4 Bars

NO.	REVISION	ADD REINFORCEMENT NOTE	GRB	2-29-84
		REVISED JOINTS	GRB	2-2-89
		DATE	BY	DATE
		3-8-83		
		DATE	SCALE	AS SHOWN
		3-9-83		
HOWARD NEEDLES TAMMEN & BERGENDOFF HNTB TEXAS TURNPIKE AUTHORITY DALLAS NORTH TOLLWAY MISCELLANEOUS DETAILS SERVICE ROADS SECTION VII				
DRAWN	CHECKED	DATE	DESIGNED	DATE
GRB	GRB	3-8-83	GRB	3-8-83
STANDARD DRAWING NO. 14				