

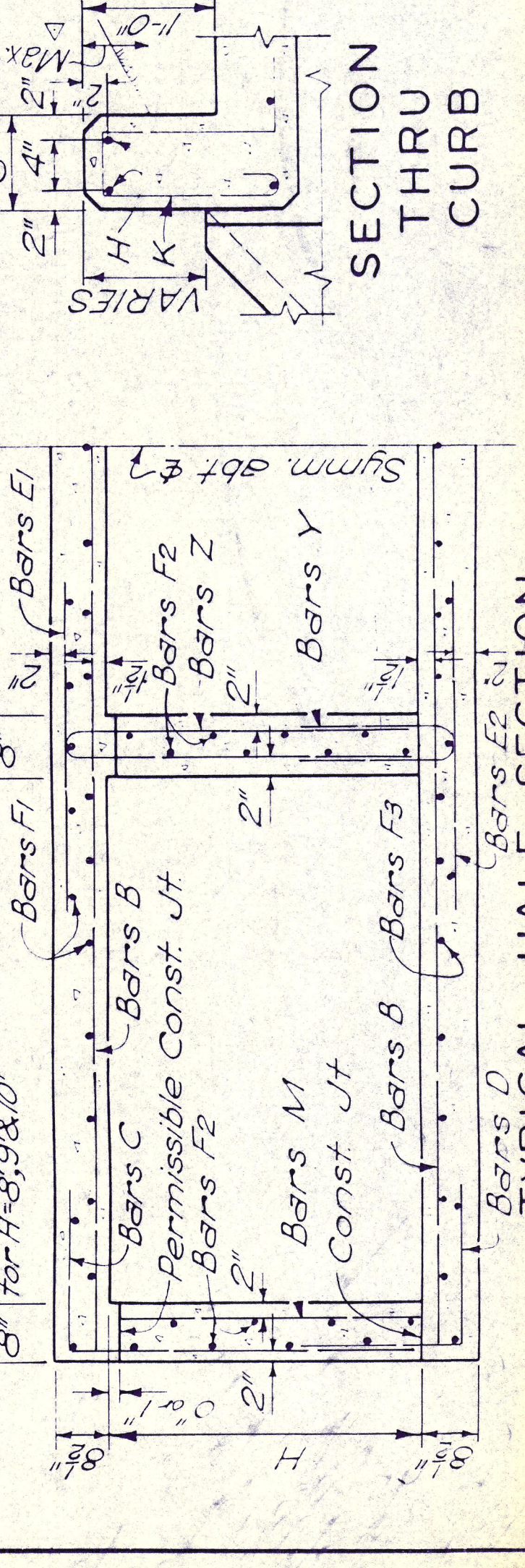
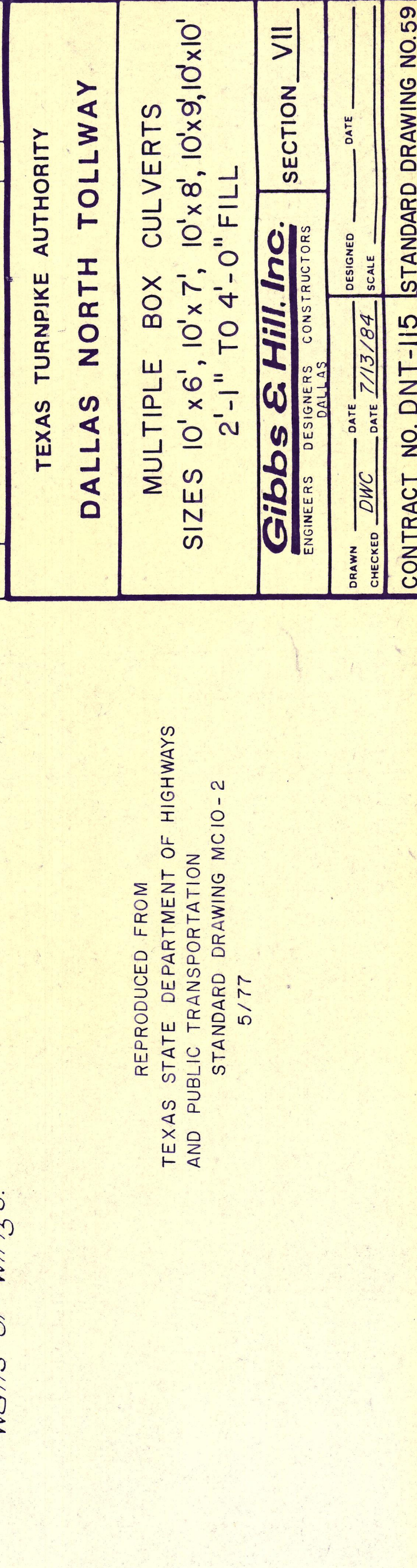
BILLS OF REINFORCING STEEL FOR 44'-0" CLEAR WIDTH - BARRELS ONLY

Table with columns for MARK, NUMBER, SIZE, SPACING, LENGTH, WEIGHT, and various dimensions (B, C, D, E1, E2, F1, F2, H, K, M, Y, Z) for different barrel sizes (10'x6', 10'x8', 10'x9', 10'x10').

Table titled 'QUANTITIES' showing 'NO. OF SPANS', 'NO. OF BARS', and 'QUANTITIES' for different barrel sizes.

Table titled '* BARREL QUANTITIES' showing 'NO. OF SPANS', 'NO. OF BARS', and 'QUANTITIES' for different barrel sizes.

Table titled 'REINFORCING STEEL' showing 'NO. OF SPANS', 'NO. OF BARS', and 'QUANTITIES' for different barrel sizes.



* These quantities do not include toe walls or wings.

Project information block including: TEXAS TURNPIKE AUTHORITY, DALLAS NORTH TOLLWAY, MULTIPLE BOX CULVERTS, SIZES 10'x6", 10'x7", 10'x8", 10'x9", 10'x10", 2'-1" TO 4'-0" FILL, and contractor information for Gibbs & Hill, Inc.

Reproduction information block: REPRODUCED FROM TEXAS STATE DEPARTMENT OF HIGHWAYS AND PUBLIC TRANSPORTATION STANDARD DRAWING MC10-2 5/77. Includes a title block with project name, section VII, and contract details.