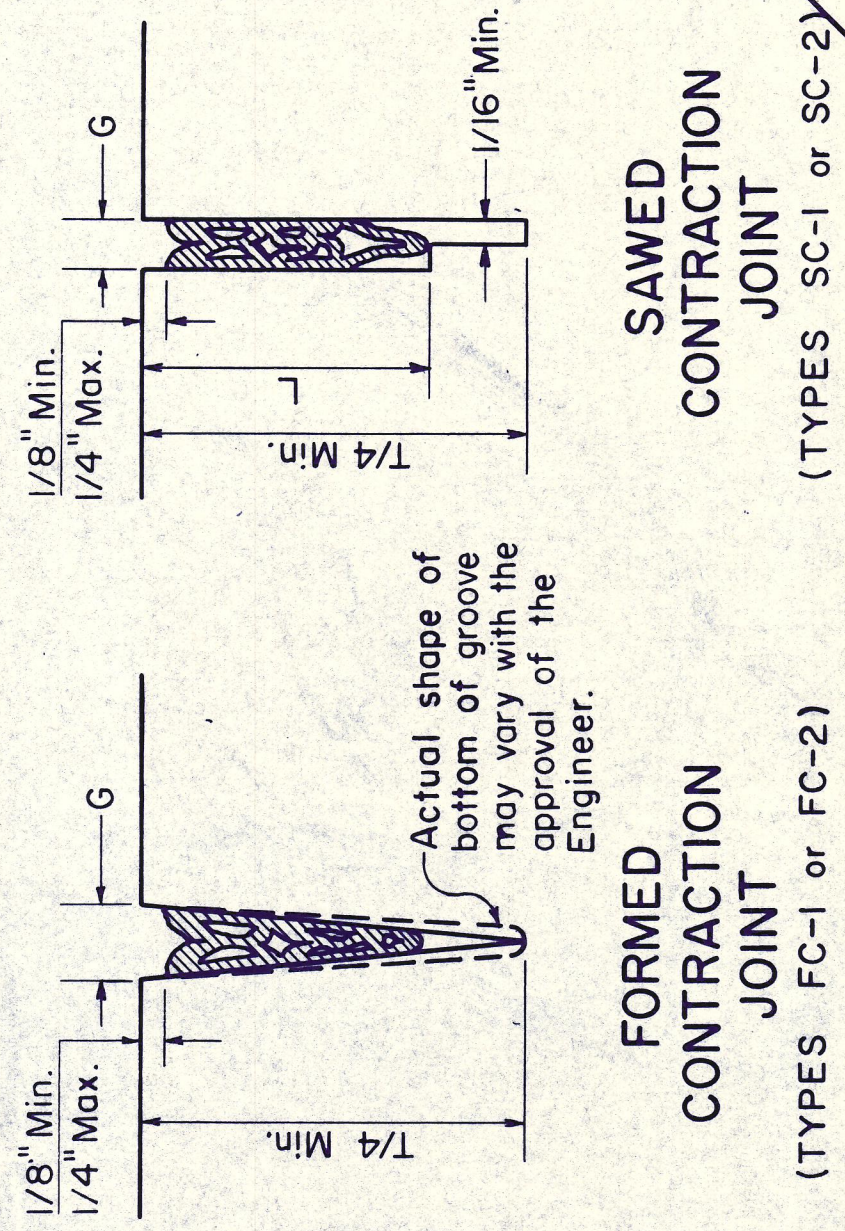
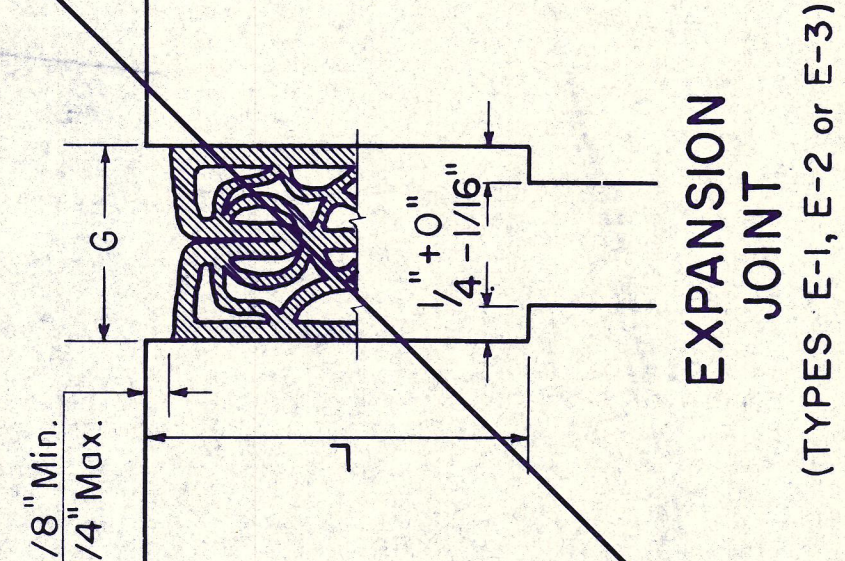


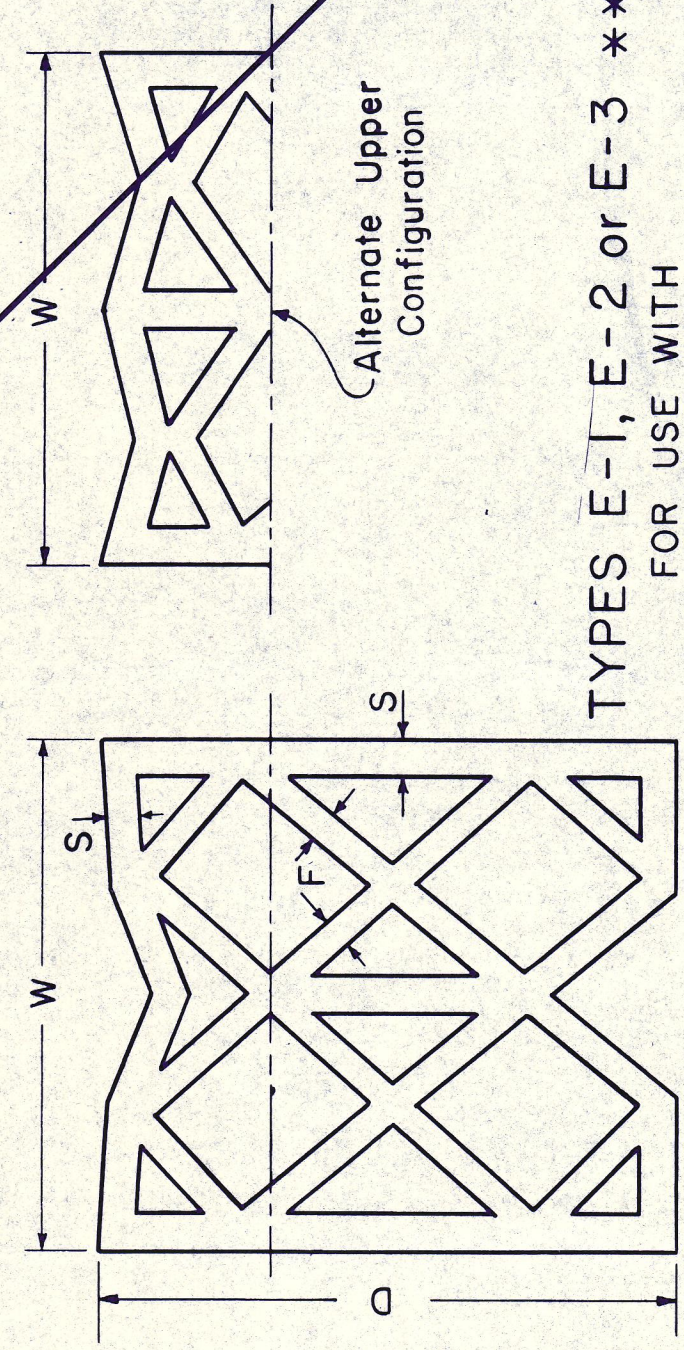
LONGITUDINAL JOINT SEALS  
(TYPES L-1 or L-2)



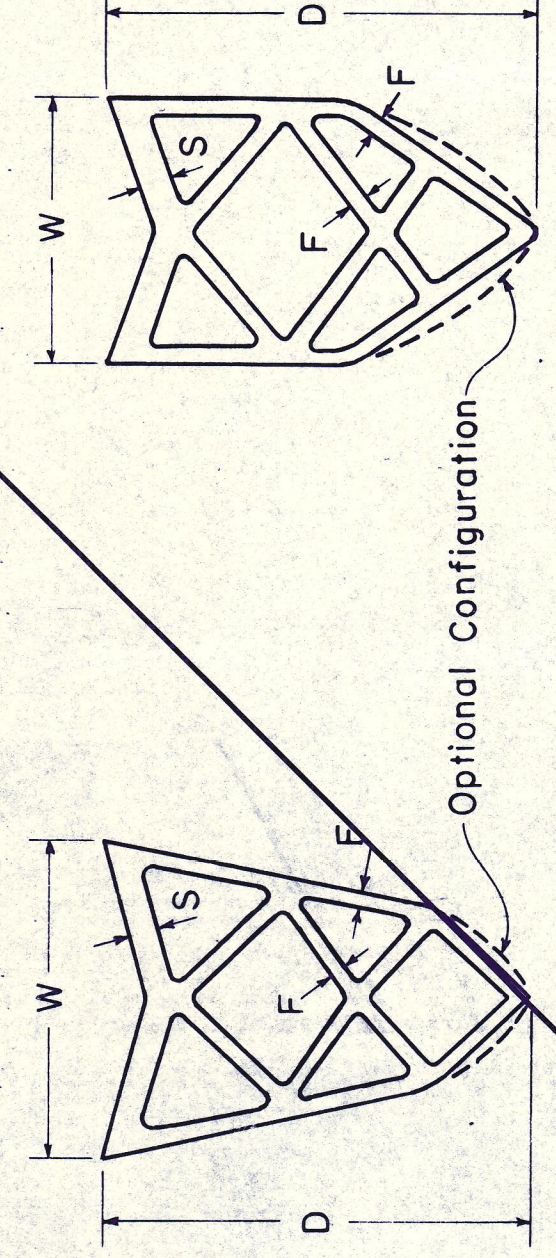
TRANSVERSE JOINT SEALS  
(TYPES SC-1 or SC-2)



TRANSVERSE JOINT SEALS  
(TYPES E-1, E-2 or E-3)



PREFORMED COMPRESSION SEAL TYPES



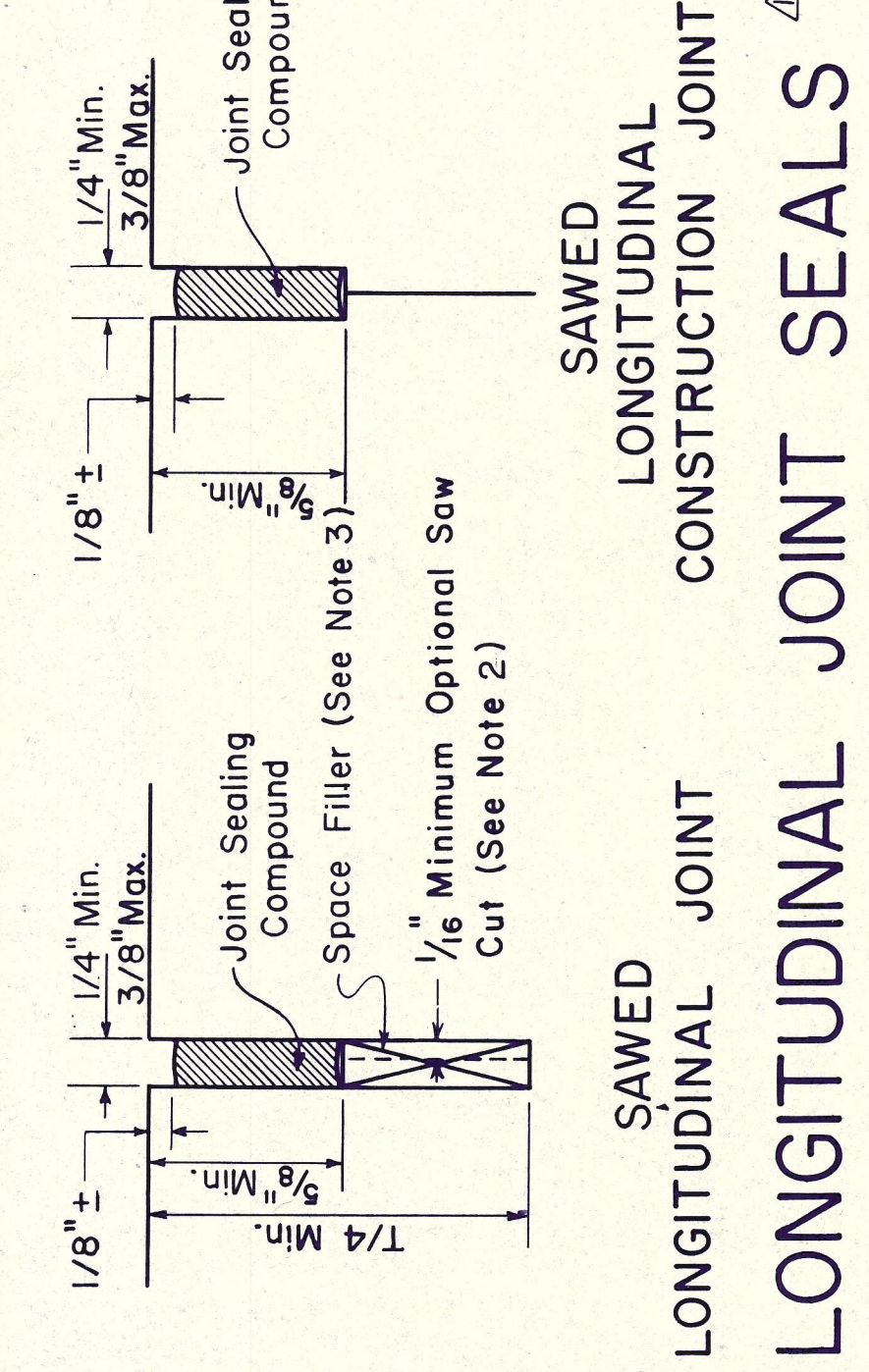
PREFORMED COMPRESSION SEAL TYPES

**METHOD A: PREFORMED COMPRESSION SEALS**

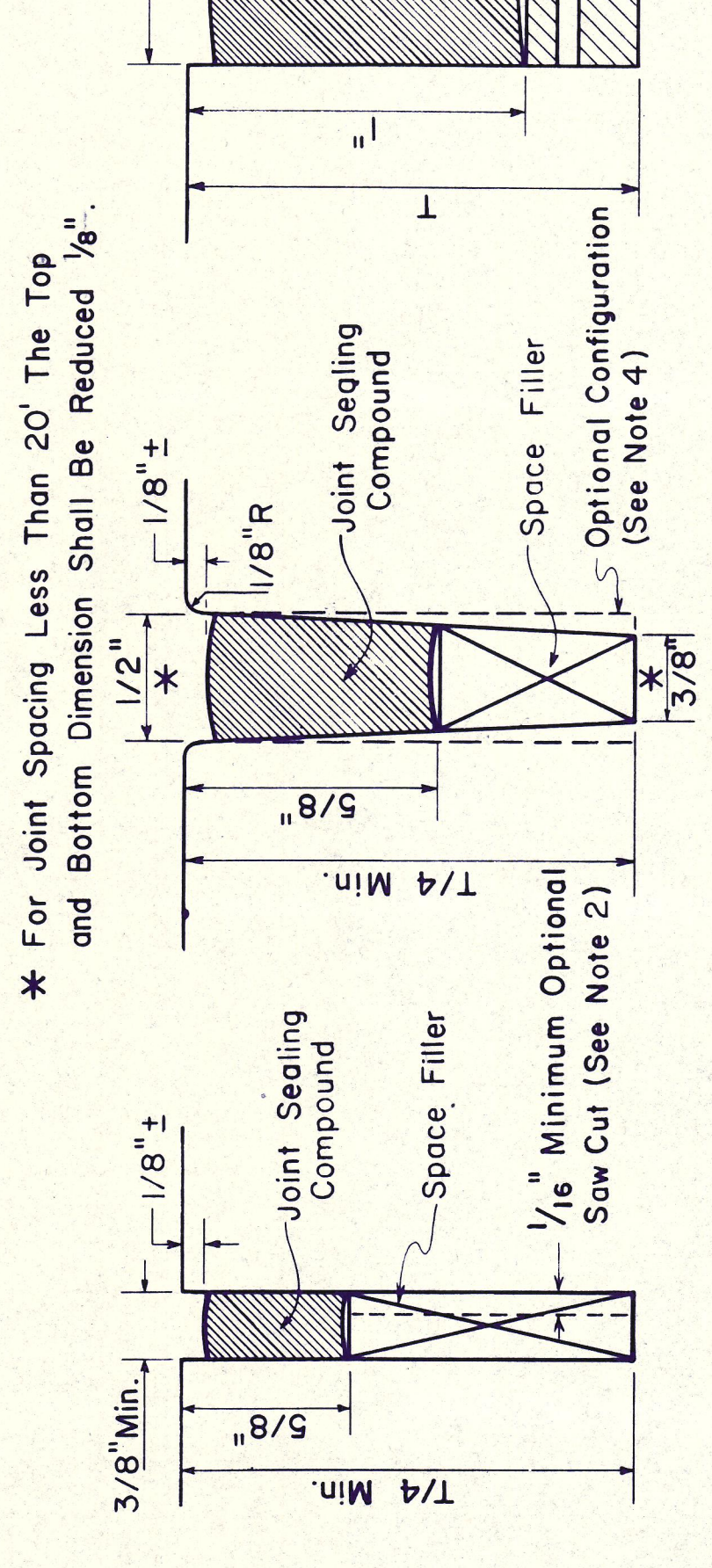
JOINT TYPE	JOINT GROOVE WIDTH (in.)	JOINT GROOVE DEPTH (in.)	MINIMUM JOINT SEAL SIZE TO BE USED		SEAL DESIGNATION
			MAX. WIDTH (in.)	THICK. (in.)	
LONGITUDINAL JOINT	1/8 to 1/4	5/8	1/8	0.040	L-1
	1/4 to 1/2	7/32	0.062	-0.005	L-2
SAWED TRANSVERSE CONTRACTION JOINT	1/8 to 1/4	1-1/8	1/4	0.080	SC-1
	1/4 to 1/2	1-3/4	5/16	0.080	SC-2
FORMED TRANSVERSE CONTRACTION JOINT	3/8	N/A	5/16	0.080	FC-1
	5/8	N/A	5/8	0.080	FC-2
EXPANSION JOINTS	1-1/4	2-3/4	2	0.125	E-1
	1-5/8	3-3/8	2-1/2	0.187	E-2
					E-3

- \* THIS GROOVE WIDTH IS FOR SUMMER CONCRETE PLACEMENT. WHEN CONCRETE IS PLACED DURING THE WINTER SEASON, THIS GROOVE SHALL BE INCREASED 1/8".
1. DUE TO SMALL VARIATIONS IN SEAL SIZES, THIS DIMENSION MAY HAVE TO BE MODIFIED SLIGHTLY TO INSURE PROPER INSTALLATION. THIS DIMENSION IS APPLICABLE ONLY WHEN A STEPPED GROOVE IS USED. N/A: NOT APPLICABLE.
2. THESE DIMENSIONS ARE MINIMUM DIMENSIONS. DIMENSIONS GREATER THAN THOSE SHOWN MAY BE USED IF APPROVED BY THE ENGINEER AND IF THEY PERMIT INSTALLATION IN A WORKMANLIKE MANNER AT NO EXTRA EXPENSE TO THE STATE.
3. ONLY MINIMUM TOLERANCES ARE SHOWN. ANY REASONABLE OVERSIZE WILL BE ACCEPTED PROVIDED PROPER INSTALLATION IS POSSIBLE.

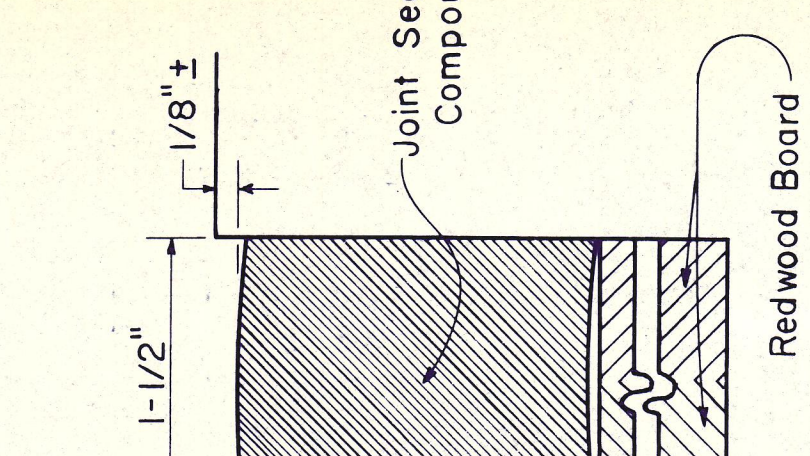
- GENERAL NOTES FOR METHOD "A"**
- A SAMPLE OF EACH SIZE AND TYPE OF SEAL PROPOSED FOR USE SHALL BE APPROVED BY THE ENGINEER PRIOR TO INSTALLATION.
  - THE SEALS SHOWN AS METHOD "A" OR METHOD "B" MAY BE USED AT ANY JOINT REQUIRING A SEAL, HOWEVER, THE SAME SEAL SHALL BE USED THROUGHOUT THE PROJECT UNLESS OTHERWISE AUTHORIZED BY THE ENGINEER.
  - LONGITUDINAL JOINTS SHALL BE SAWED STRAIGHT AND TRUE TO LINE AS DETAILED IN THE STANDARD SPECIFICATIONS.
  - TRANSVERSE JOINTS MAY BE SAWED OR FORMED AND SHALL BE PLACED AS SHOWN ELSEWHERE IN THE PLANS.
  - OTHER INTERIOR CONFIGURATIONS MAY BE USED PROVIDED THE MATERIAL MEETS ALL OF THE REQUIREMENTS OF THE SPECIFICATIONS AND AS OTHERWISE SHOWN HEREON OR ELSEWHERE IN THE PLANS. THE NUMBER OF INTERIOR CELLS AND/OR THE THICKNESS OF THE EXTERIOR AND INTERIOR WALLS SHALL BE SUCH AS TO PROVIDE AN ADEQUATE COMPRESSIVE FORCE TO MAINTAIN A POSITIVE SEAL.
  - UNLESS OTHERWISE SPECIFIED, THE SIDES OF THE FORMED CONTRACTION JOINT MAY BE FORMED PARALLEL, BUT IF SO FORMED, THE SEAL SHALL BE AN APPROPRIATE TYPE SC SEAL APPROVED BY THE ENGINEER.
  - UNLESS THE GROOVE AND SEAL COMBINATION IS SPECIFICALLY DESIGNATED ELSEWHERE IN THE PLANS, ANY GROOVE AND SEAL COMBINATION SHOWN IN THE TABLE FOR A PARTICULAR TYPE JOINT MAY BE USED, BUT MUST BE APPROVED BY THE ENGINEER.



LONGITUDINAL JOINT SEALS  
(TYPES L-1 or L-2)



TRANSVERSE JOINT SEALS  
(TYPES SC-1 or SC-2)



TRANSVERSE JOINT SEALS  
(TYPES E-1, E-2 or E-3)

**METHOD B: JOINT SEALING COMPOUND**

- GENERAL NOTES FOR METHOD "B"**
- Longitudinal and transverse joints shall be sawed or formed as detailed in the plans and specifications.
  - A suitable space filler shall be used where shown and the joint seal compound poured to the depth indicated except that if the minimum saw cut is used, the space filler may be deleted.
  - At the option of the Contractor, the space filler may be omitted in the longitudinal joint only and the joint sealing compound poured full depth.
  - Unless otherwise specified, the sides of the formed contraction joint may be formed parallel at the option of the Contractor.
  - Unless otherwise shown in the plans, Method "B" shall be used.
  - T is thickness of pavement.

REPRODUCED FROM  
TEXAS STATE DEPARTMENT OF  
HIGHWAYS AND PUBLIC TRANSPORTATION  
STANDARD DRAWING JS-75

NO.	REVISION	BY	DATE
1	Revised Longitudinal Joint	T.D.	9-19-84

**TEXAS TURNPIKE AUTHORITY**  
**DALLAS NORTH TOLLWAY EXTENSION**

CONCRETE PAVING DETAILS  
JOINT SEALS

**HNTB**  
HOWARD NEEDLES TAMMEN & BERGENDOFF

SECTION VII

DRAWN: PMA DATE: 3-20-83  
CHECKED: PMA DATE: 3-20-83 SCALE: DATE:

STANDARD DRAWING NO. 13  
CONTRACT NO. DMT - 115