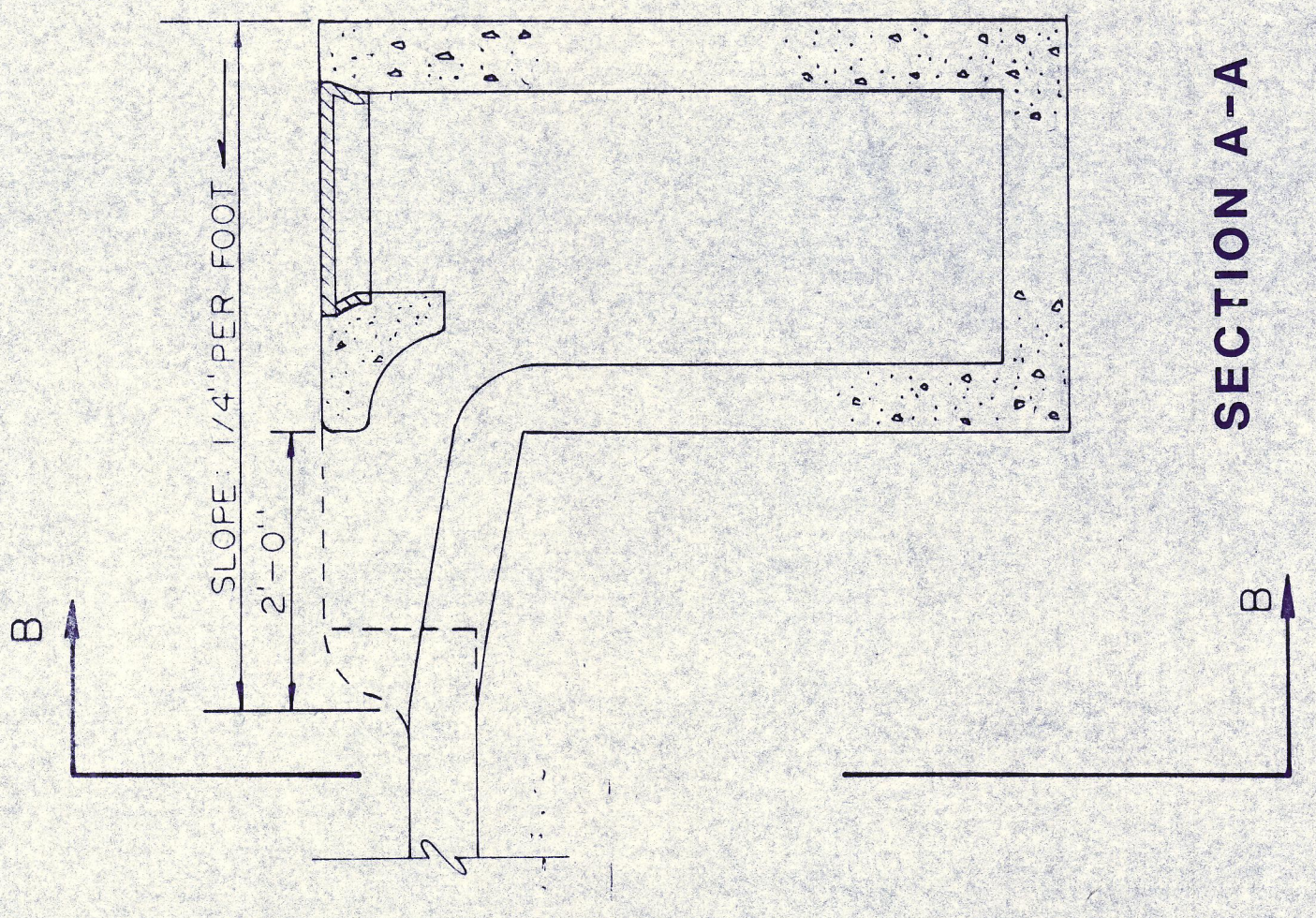
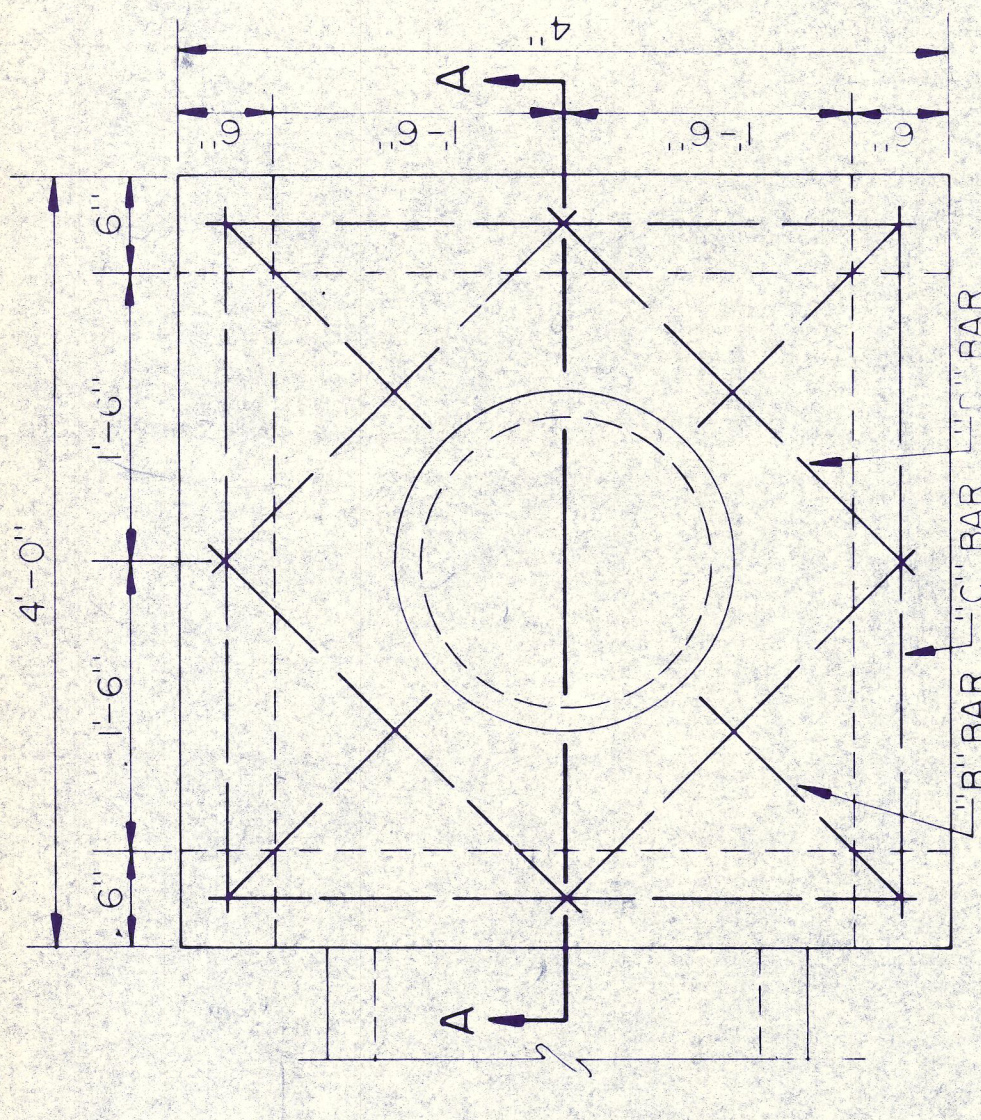


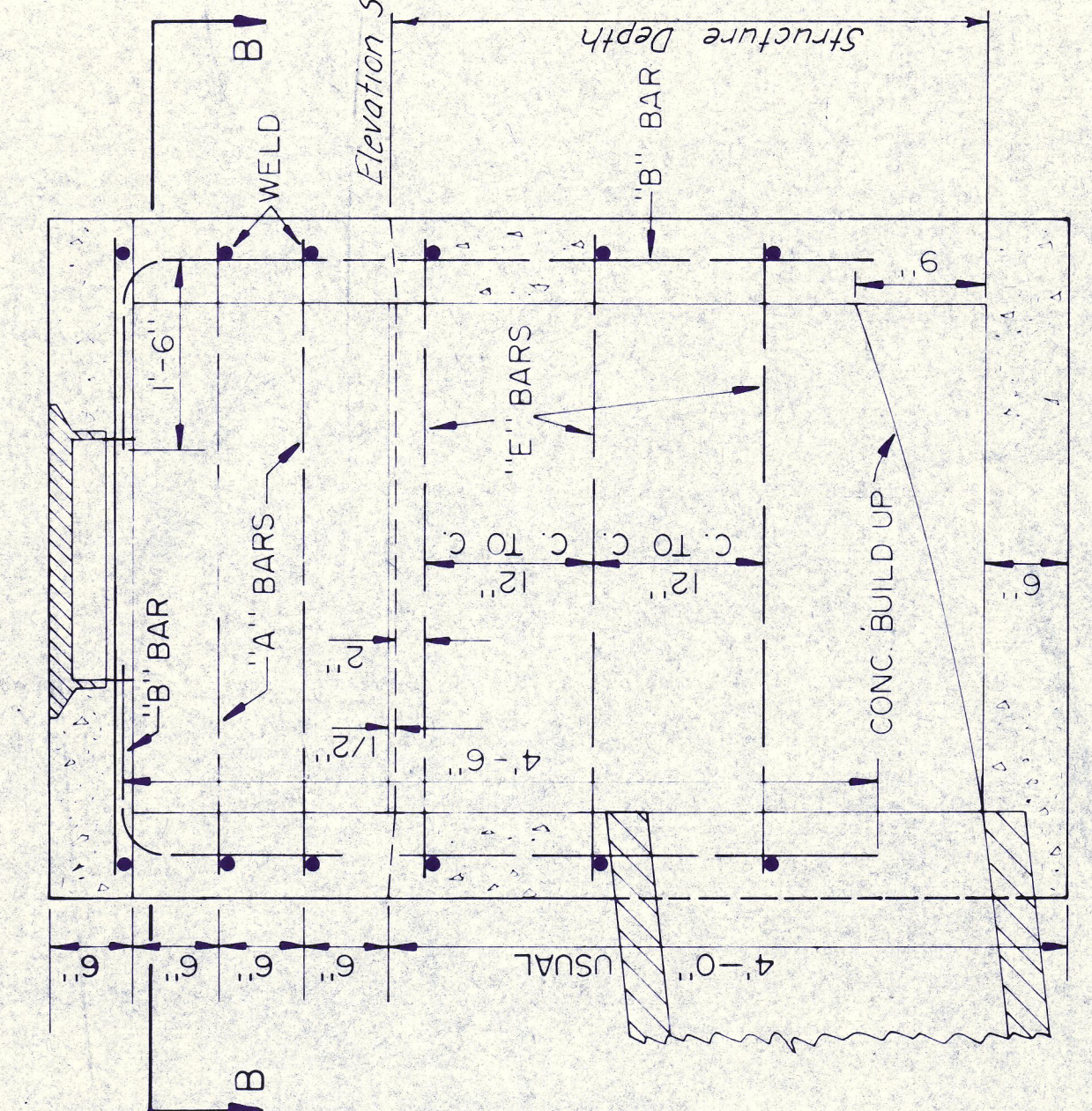
NOTE: FOR REINFORCING AND BEAM DESIGN SEE STANDARD DRAWING NOS. 5 & 6



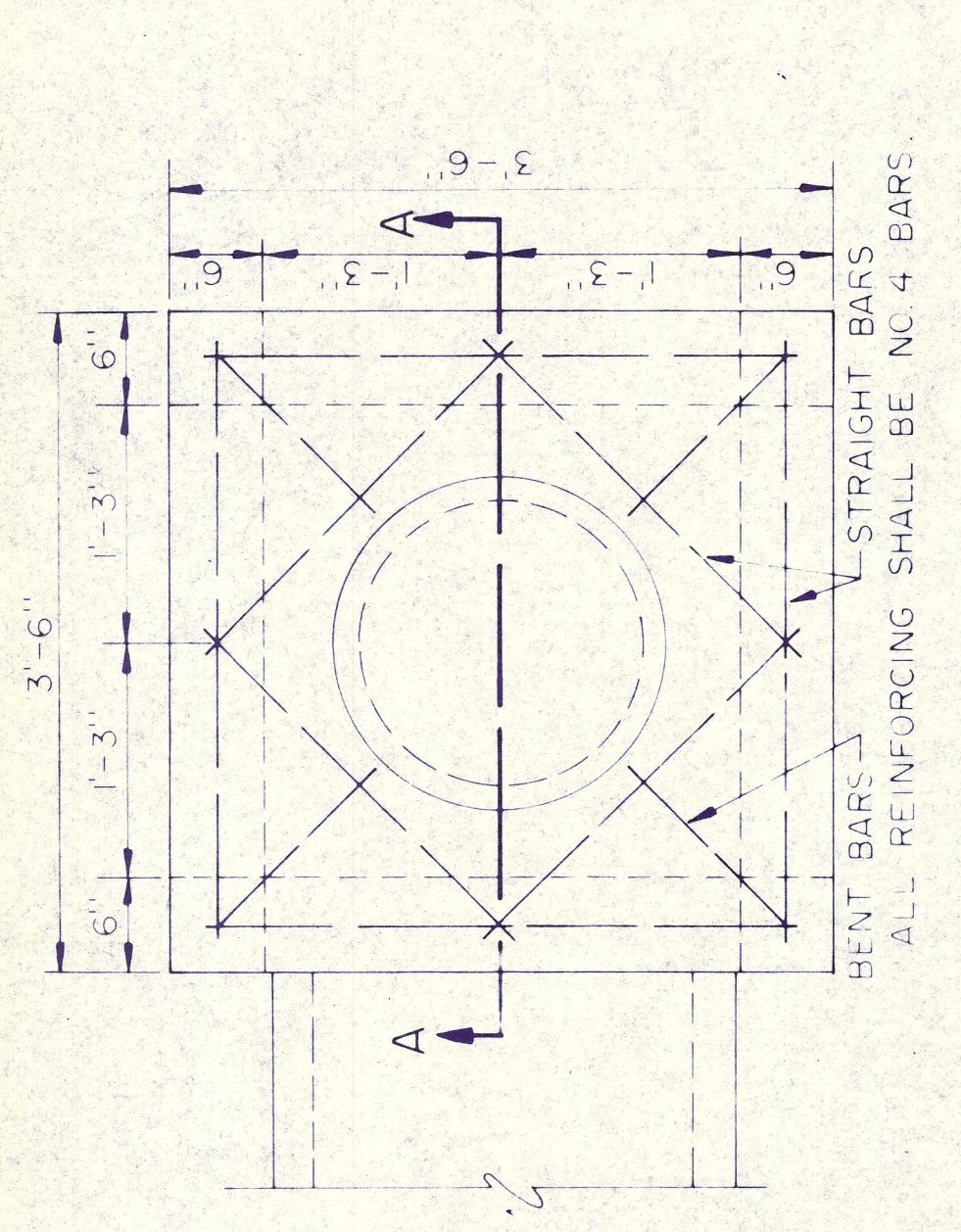
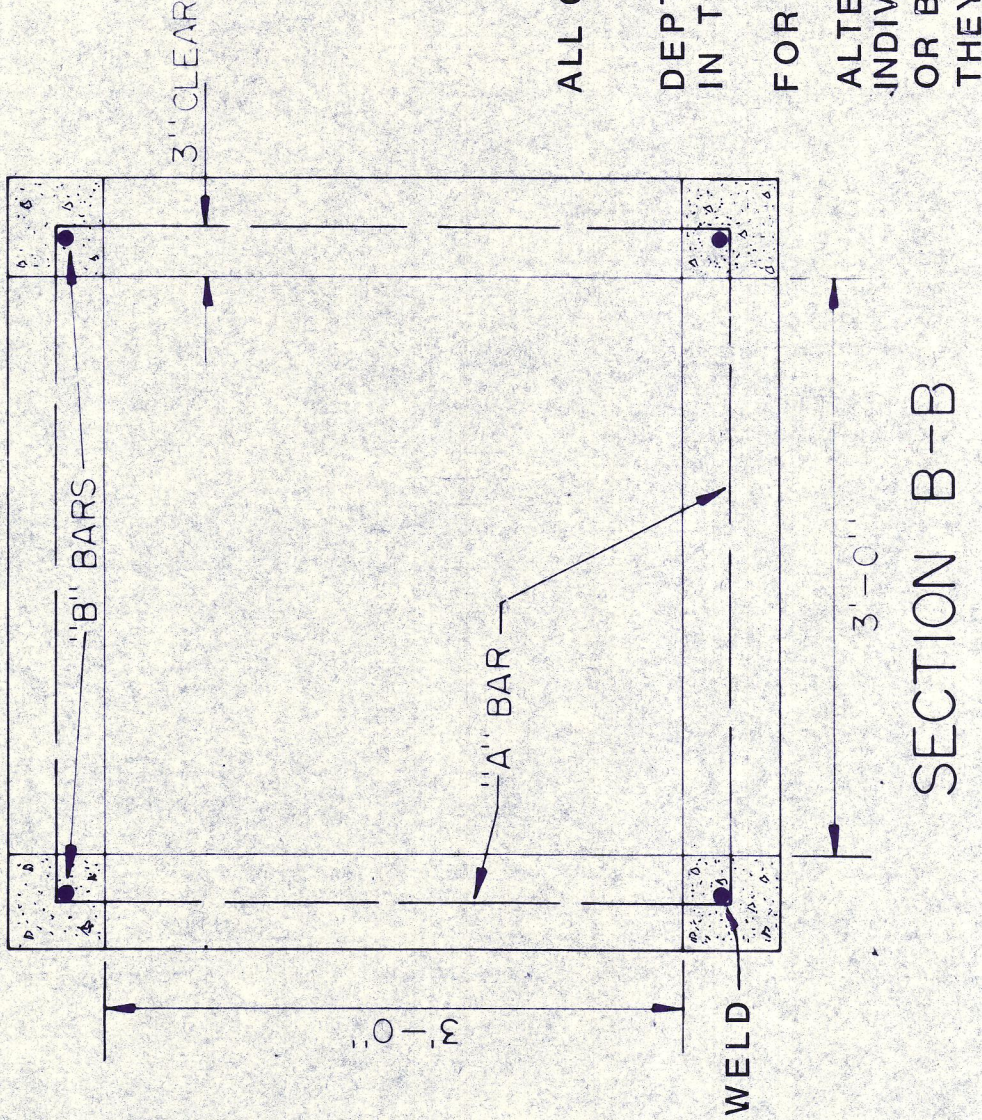
RECESSED DETAILS FOR CITY STREET INLETS



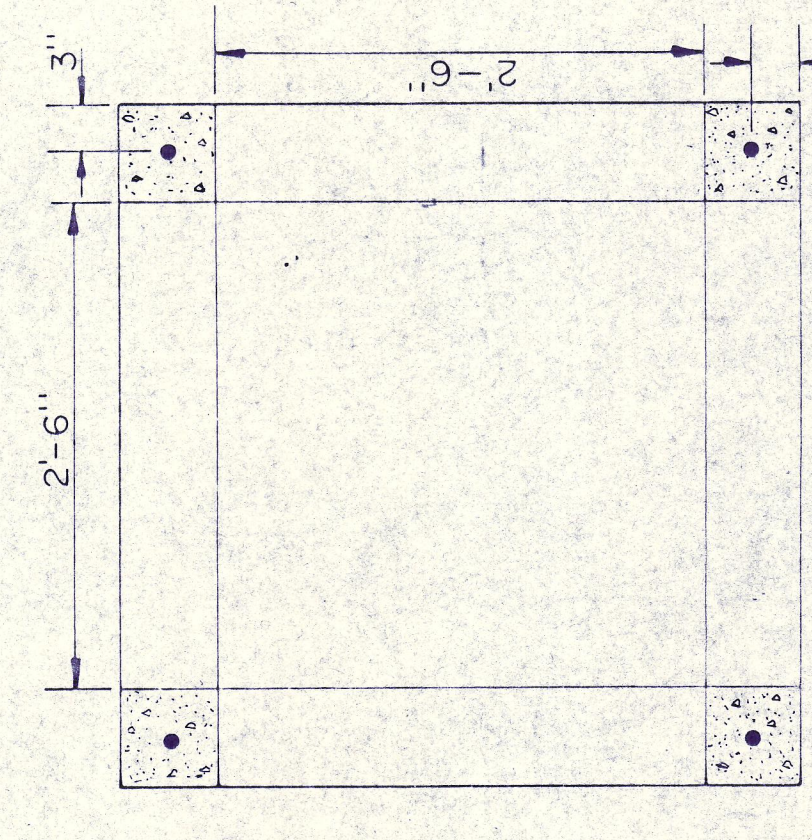
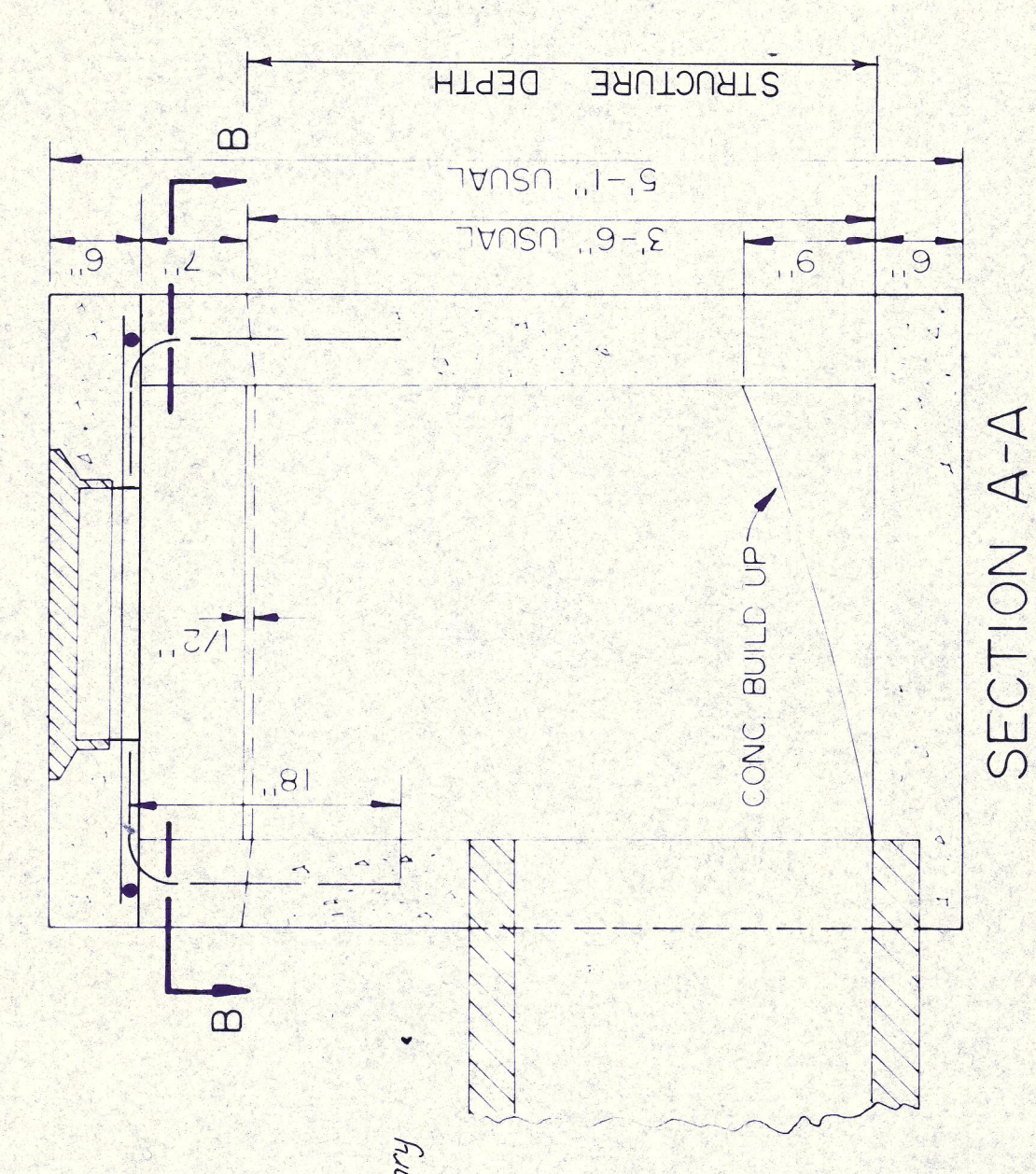
SPECIAL "Y" INLET



"A" BARS SHALL BE NO. 8 BARS PLACED AS SHOWN & WELDED AT EACH CORNER OF THE INLET. ALL OTHER BARS SHALL BE NO. 5 BARS PLACED AS SHOWN.



STANDARD "Y" INLET



GENERAL NOTES

ALL CONCRETE SHALL BE CLASS "A".
 DEPTH OF INLETS MAY VARY TO SUIT CONDITIONS IN THE FIELD OR AS SPECIFIED IN THE PLANS.
 FOR FRAME AND COVERSEE STANDARD DRAWING NO. 5
 ALTERNATE PRECAST INLETS MAY BE APPROVED ON AN INDIVIDUAL BASIS. PRECAST INLETS SHALL BE OF EQUAL OR BETTER STRENGTH, MATERIAL, AND WORKMANSHIP. THEY SHALL ALSO MEET THE STANDARD DESIGN CRITERIA OF THE CAST-IN-PLACE INLETS AS SHOWN IN THESE DETAILS.

NO.	REVISION	BY	DATE
TEXAS TURNPIKE AUTHORITY DALLAS NORTH TOLLWAY			
RECESSED AND "Y" INLET DETAILS			
HNTB <small>HOWARD NEEDLES TAMMEN & BERGENDOFF</small>		SECTION VII	
DRAWN	DATE	DESIGNED	DATE
CHECKED	DATE	SCALE	DATE
	DNT/2	3-18-82	
STANDARD DRAWING NO. 7			CONTRACT NO. DNT-115