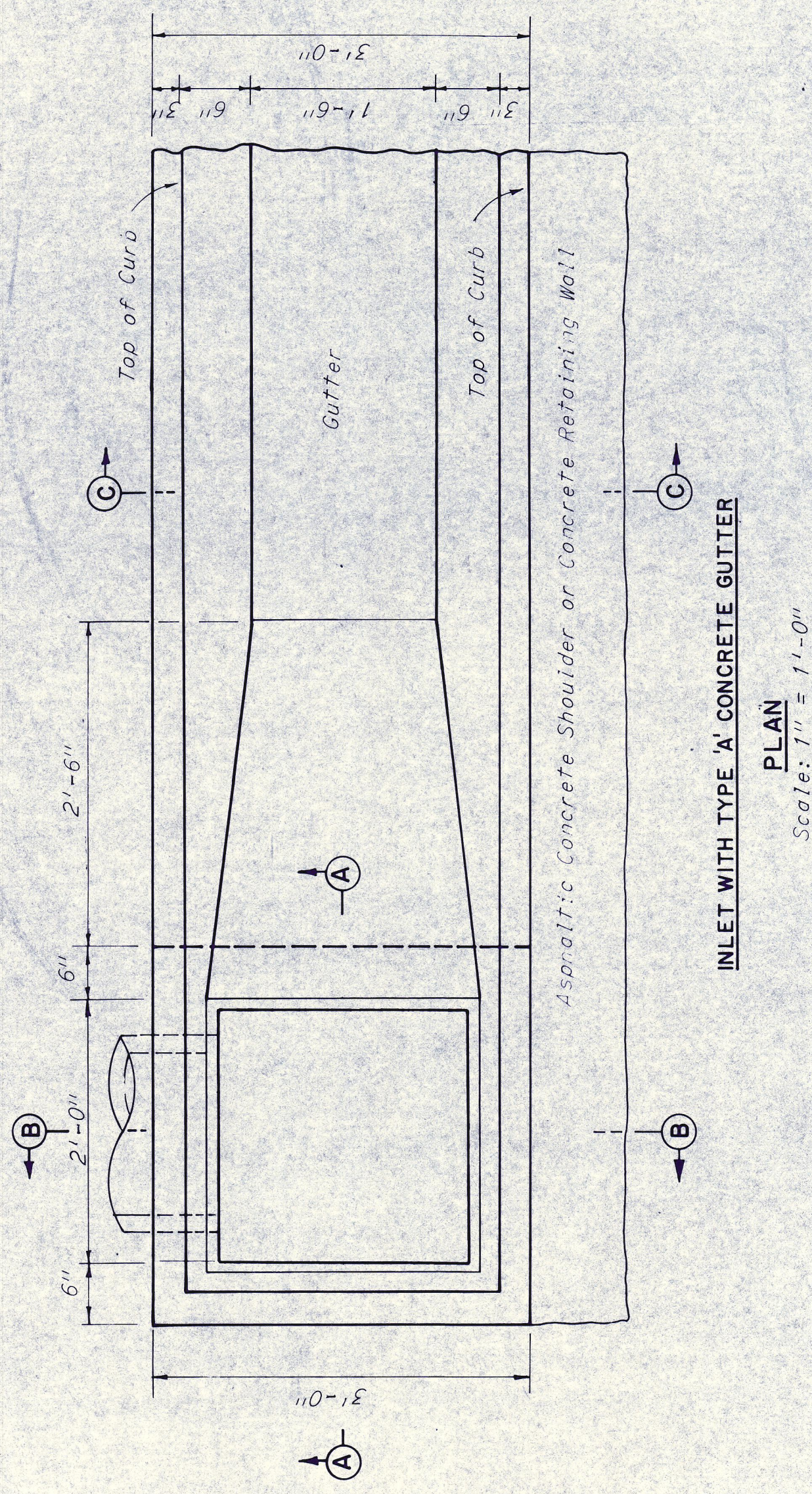
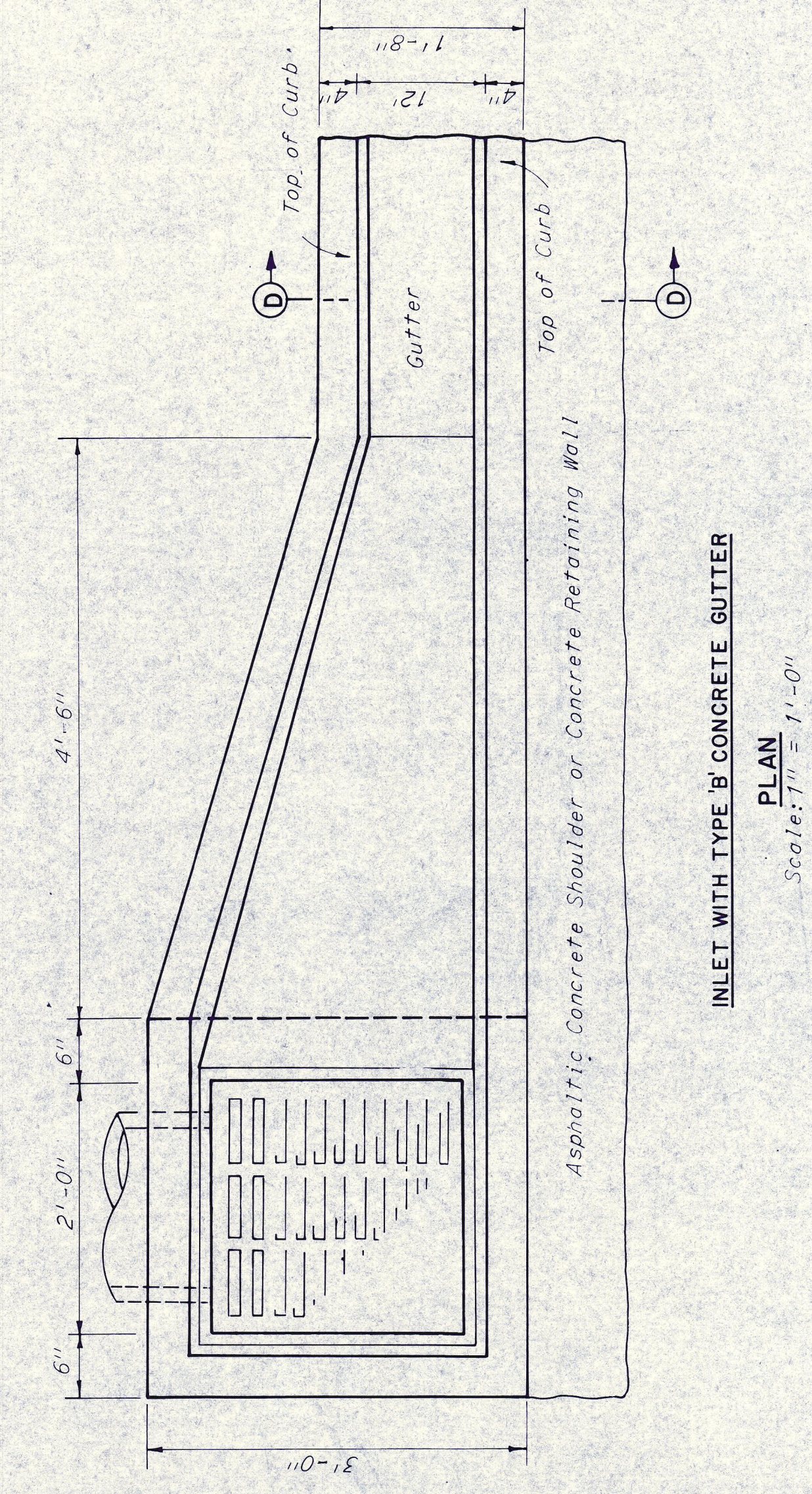


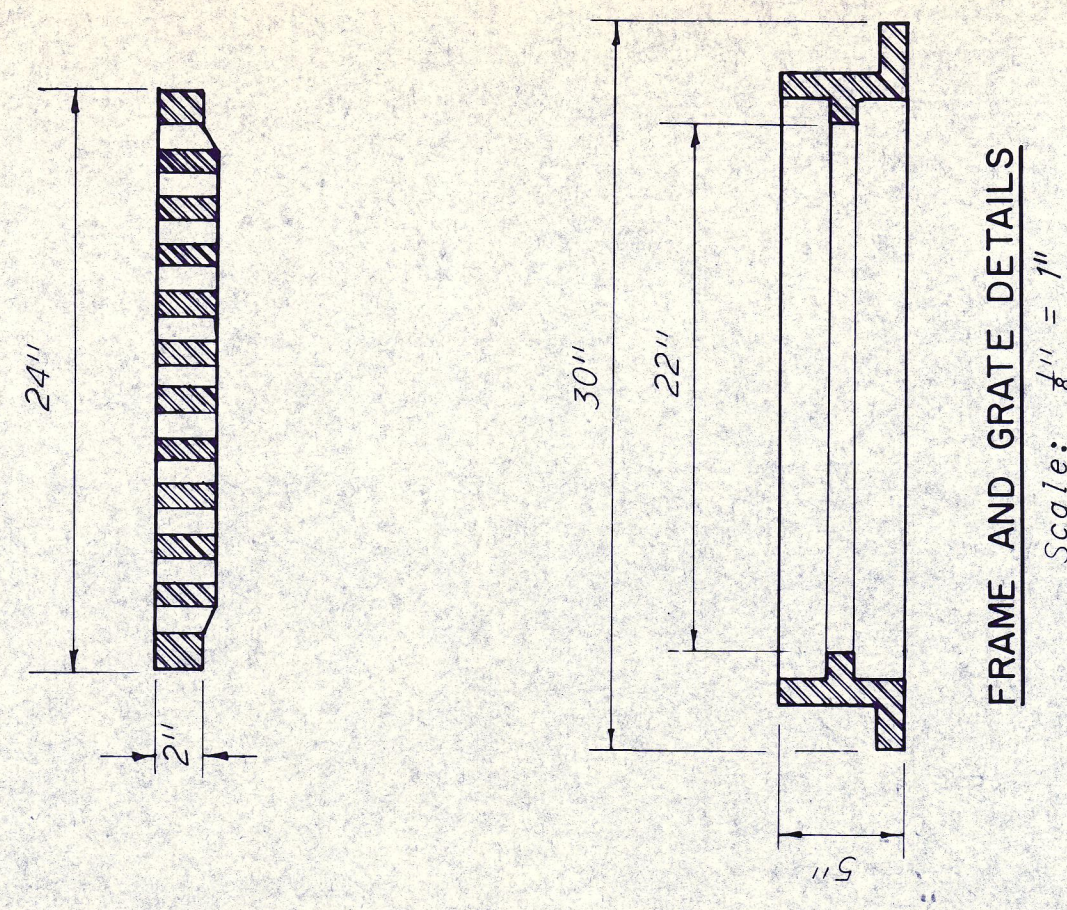
NOTE:
When inlet is located at a low point concrete gutter transitions shall be symmetrical about 1/2 of box.



INLET WITH TYPE 'A' CONCRETE GUTTER
Scale: 1" = 1'-0"



INLET WITH TYPE 'B' CONCRETE GUTTER
Scale: 1" = 1'-0"



FRAME AND GRATE DETAILS
Scale: 1/4" = 1"

GENERAL NOTES:

Alternate. Precast inlets may be approved on an individual basis. Precast inlets shall be of equal or better strength, material, and workmanship. They shall also meet the standard design criteria of the cast-in-place inlets as shown in these details.

Top of Inlet walls shall be level and to the elevation at the bottom of the gutter at the inlet.

All concrete above the construction joint is to be constructed during gutter construction and will be paid for as Lin. Ft. of Gutter.

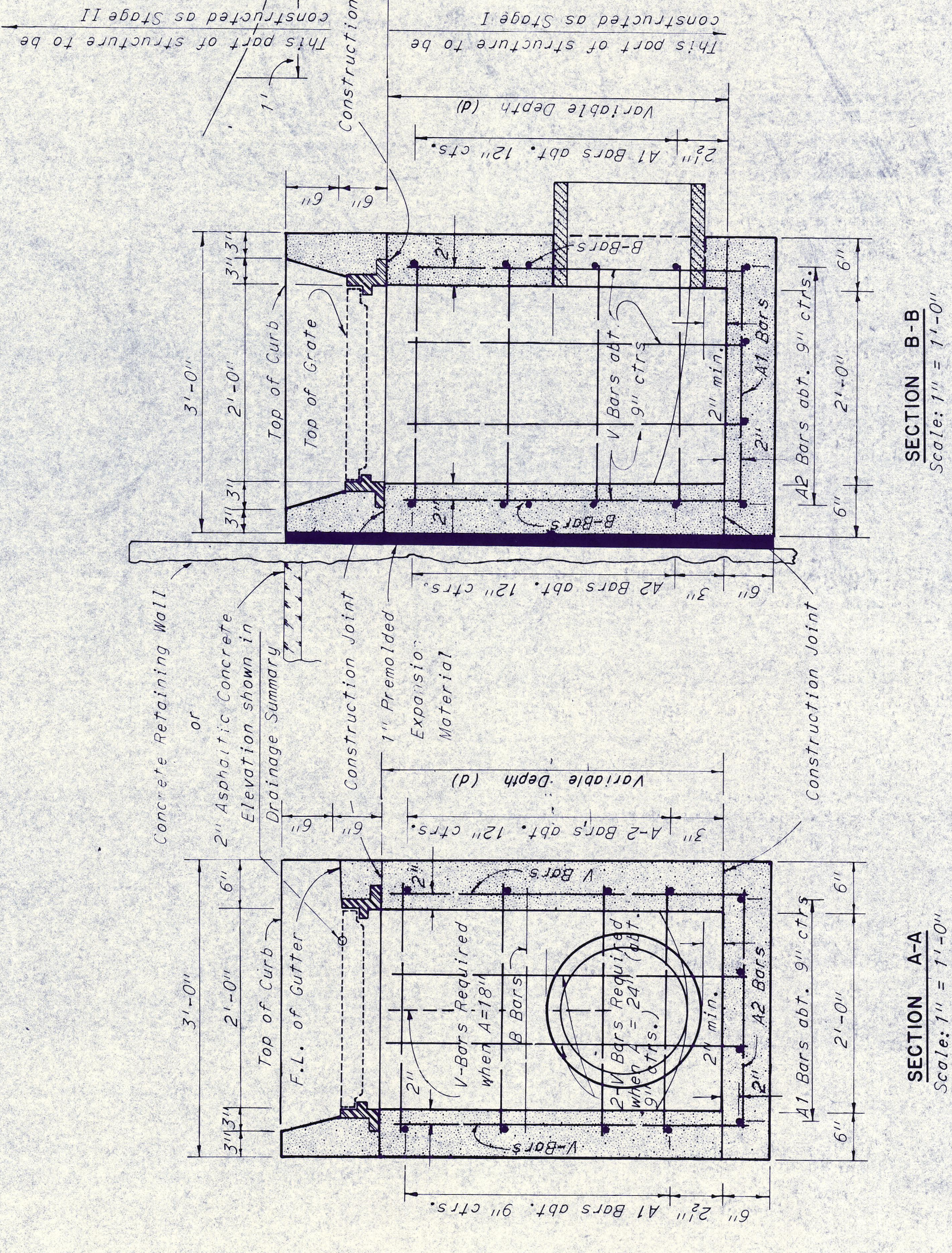
All concrete below the construction joints shall be Class A. Invert concrete shall be placed after Inlet Box has been constructed.

Reinforcing bars shall be cut and or bent at pipe openings. The reinforcing steel shown on this drawing is in addition to any reinforcing shown on drawings for Concrete Gutters.

Steps for inlets shall be placed at intervals of 16 inches, as directed by the Engineer. Inlet Steps shall conform to Bass and Hays Foundry, Inc. Standard Manhole Steps No. 90, or equal.

The work and materials required for cutting, trimming and pointing the pipe with mortar inside the inlet or manhole will not be paid for separately but will be considered subsidiary to the cost of the pipe.

NO.	REVISION	BY	DATE
TEXAS TURNPIKE AUTHORITY			
DALLAS NORTH TOLLWAY			
TOLLWAY GUTTER INLET			
TYPE "G"			
HNTB			SECTION VII
HOWARD NEEDLES TAMMEN & BERGENOFF			
DRAWN	DATE	DESIGNED	DATE
PM.A	3-15-83	AS	3/15/83
CHECKED	SCALE	AS SHOWN	
	1" = 1'-0"		
STANDARD DRAWING NO. 3			
CONTRACT NO. DNT-115			



SECTION A-A
Scale: 1" = 1'-0"

SECTION B-B
Scale: 1" = 1'-0"

SECTION C-C
Scale: 1" = 1'-0"

Inlet Size	A1	A2	V
Bar Mark	2'-9"	2'-9"	No
Bar Mark	d	No	No
1'-9"	8	8	12
2'-0"	8	8	12
2'-6"	10	10	12
3'-0"	10	10	12
3'-6"	12	12	12
4'-0"	14	14	12
4'-6"	14	14	12
5'-0"	14	14	12
5'-6"	16	16	12
6'-0"	16	16	12

Note:
Bar sizes for inlet are as follows:
8" Bar - #4
All others - #2

Notes:
Alter Inlet Steel for Pipe Openings as shown.

Pipe Size	Omit A1 Bars	Cut off V Bars	Add B Bar
12"	2@2'-9"	2@1'-6"	1@2'-9"
15"	2@2'-9"	2@1'-9"	1@2'-9"
18"	2@2'-9"	2@2'-0"	1@2'-9"