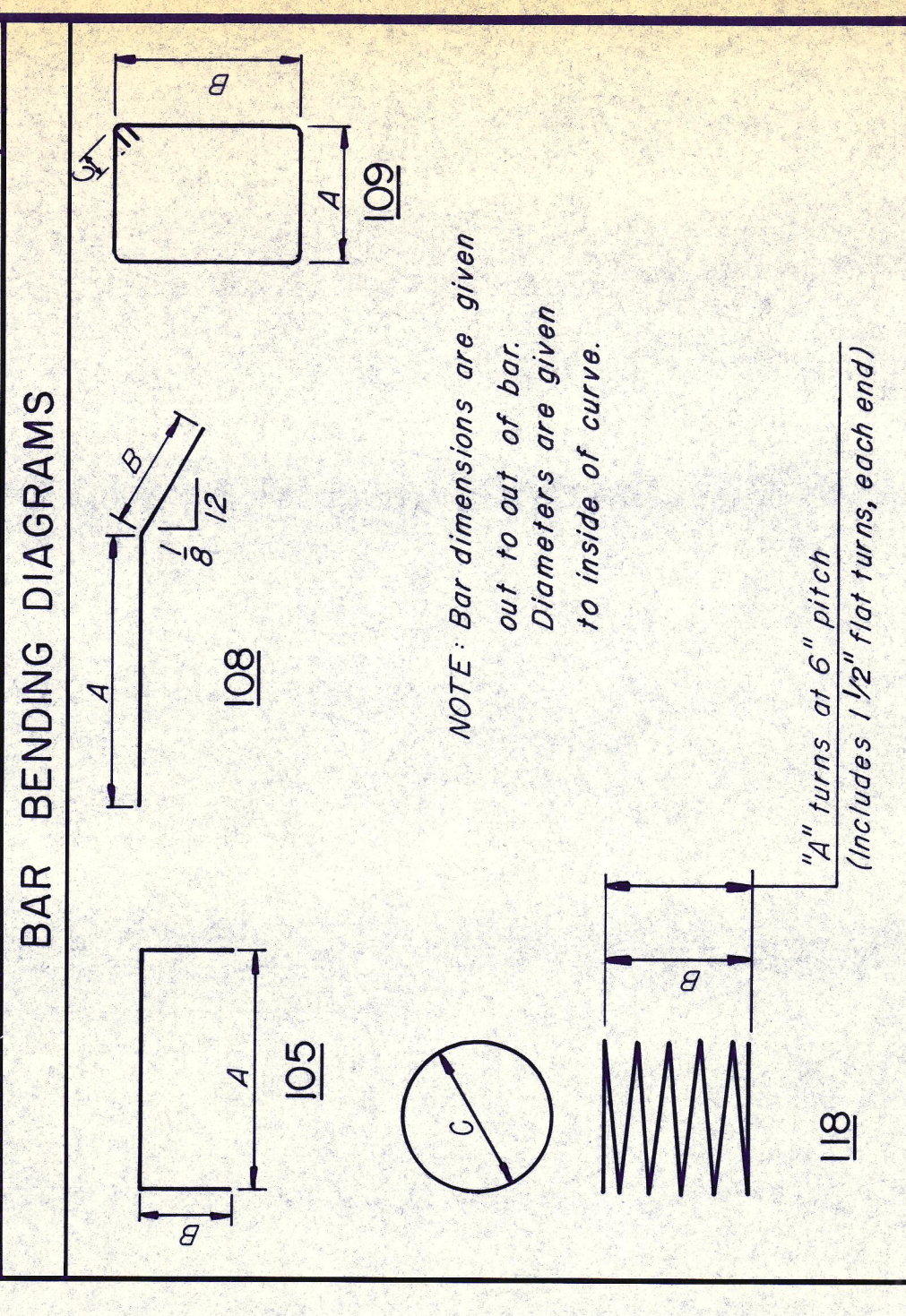


MARK	NO.	LENGTH	TYPE	DIMENSIONS			WEIGHT
				A	B	C	
301	8	168'-2"	1/18	25	10'-8"	2'-1 1/4"	506
401	104	9'-3"	109	2'-3"	2'-0"	0'-4 1/2"	643
402	20	33'-11"	51r				452
403	10	35'-1"	51r				234
404	8	8'-9"	51r				47
501	2	33'-11"	51r				71
502	1	35'-1"	51r				37
503	82	11'-9"	105	0'-7"	5'-7"		1,005
504	20	12'-11"	105	0'-7"	6'-2"		269
901	64	13'-3"	51r				2,883
1101	14	53'-5"	108	49'-10"	3'-7"		3,973
TOTAL							10,120



**ESTIMATED QUANTITY SUMMARY**

ITEM NO	DESCRIPTION	UNIT	QUANTITY
416	Drilled Shaft (30"Ø)	L F	87
421	Class C Concrete (Abutment)	CY	54.8
440	Reinforcing Steel	Lb	10,120
556	Filter Material (Type D)	CY	27.3

**NOTES**  
 Drilled Shaft tip elevations are approximate and shall be varied as required to provide a 5'-0" minimum penetration into unweathered rock. Maximum drilled shaft load is 181.9 k.  
 For Section A-A, Column Elevation and Bearing Seat Details, see Sheet No. S12.  
 For General Notes and Foundation Note see Sheet No. S12.

NO. \_\_\_\_\_ REVISION \_\_\_\_\_ BY \_\_\_\_\_ DATE \_\_\_\_\_

TEXAS TURNPIKE AUTHORITY  
**DALLAS NORTH TOLLWAY**

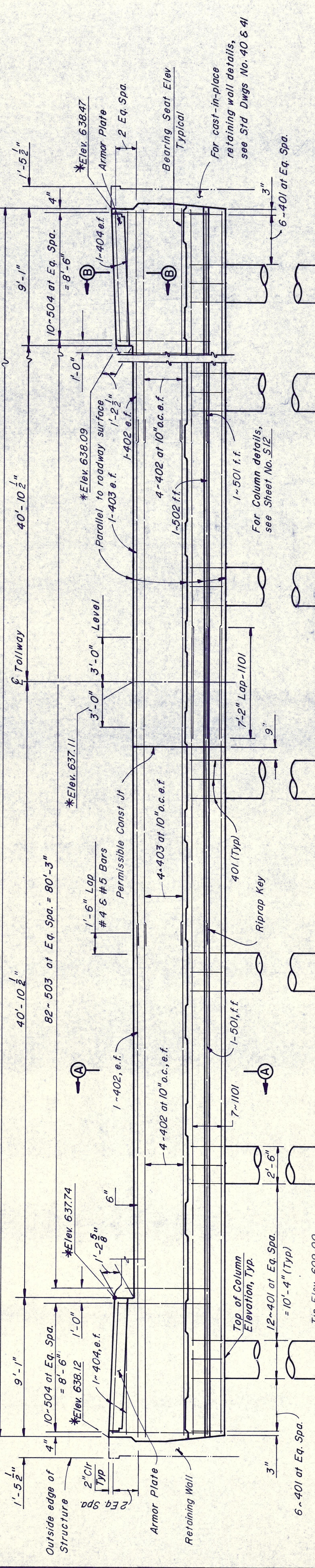
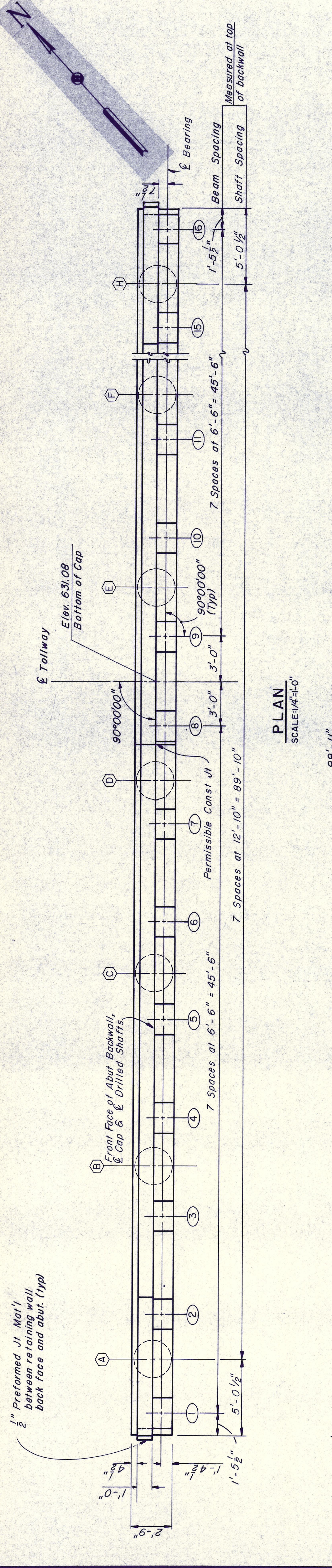
WESTGROVE DRIVE OVERPASS  
 NORTH ABUTMENT DETAILS

**Gibbs & Hill, Inc.**  
 ENGINEERS ARCHITECTS CONSTRUCTORS  
 DALLAS

SECTION VII

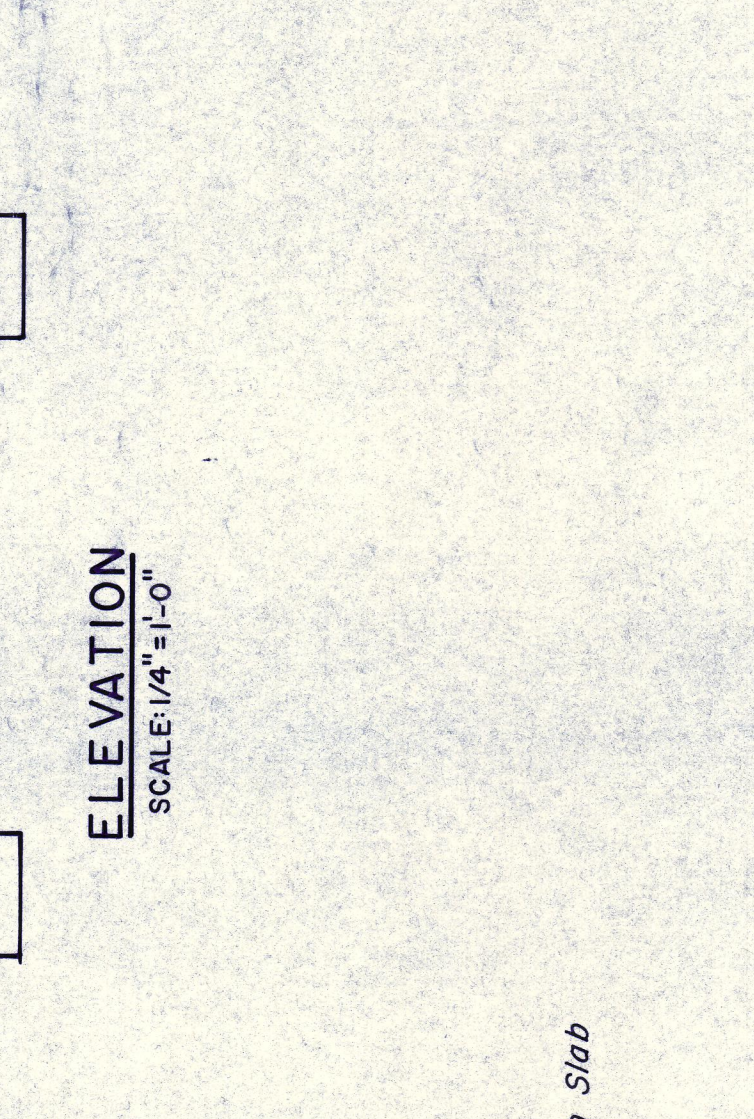
DRAWN: VEF DATE: 8-3-83 DESIGNED: REF DATE: 8-1-83  
 CHECKED: REF DATE: 8-4-83 SCALE: AS SHOWN

CONTRACT NO. DNT-115 SHEET S13 OF S21



\*NOTE: Elevations are given for the front face of the abutment backwall.

\*NOTE: Shaft tip elevations are approximate and shall be varied as required to provide a 5'-0" minimum penetration into unweathered rock. Maximum drilled shaft load is 181.9 k.  
 For Section A-A, Column Elevation and Bearing Seat Details, see Sheet No. S12.  
 For General Notes and Foundation Note see Sheet No. S12.



**COLUMN ELEVATIONS**

LOCATION	A	B	C	D	E	F	G	H
TOP	630.42	630.62	630.82	631.02	631.06	630.98	630.91	630.83
BOTTOM	619.42	619.62	619.82	620.02	620.06	619.98	619.91	619.83

**BEARING SEAT ELEVATIONS**

BEAM DESIGNATION	(1)	(2)	(3)	(4)	(5)	(6)	(7)	(8)	(9)	(10)	(11)	(12)	(13)	(14)	(15)	(16)
ELEVATION	632.99	633.09	633.19	633.29	633.40	633.50	633.60	633.70	633.80	633.90	634.00	634.10	634.20	634.30	634.40	634.50

\*NOTE: The cost of reinforcing steel is to be included in the price bid for drilled shafts.  
 Elev. North Abut. 609.00  
 Elev. South Abut. 608.00