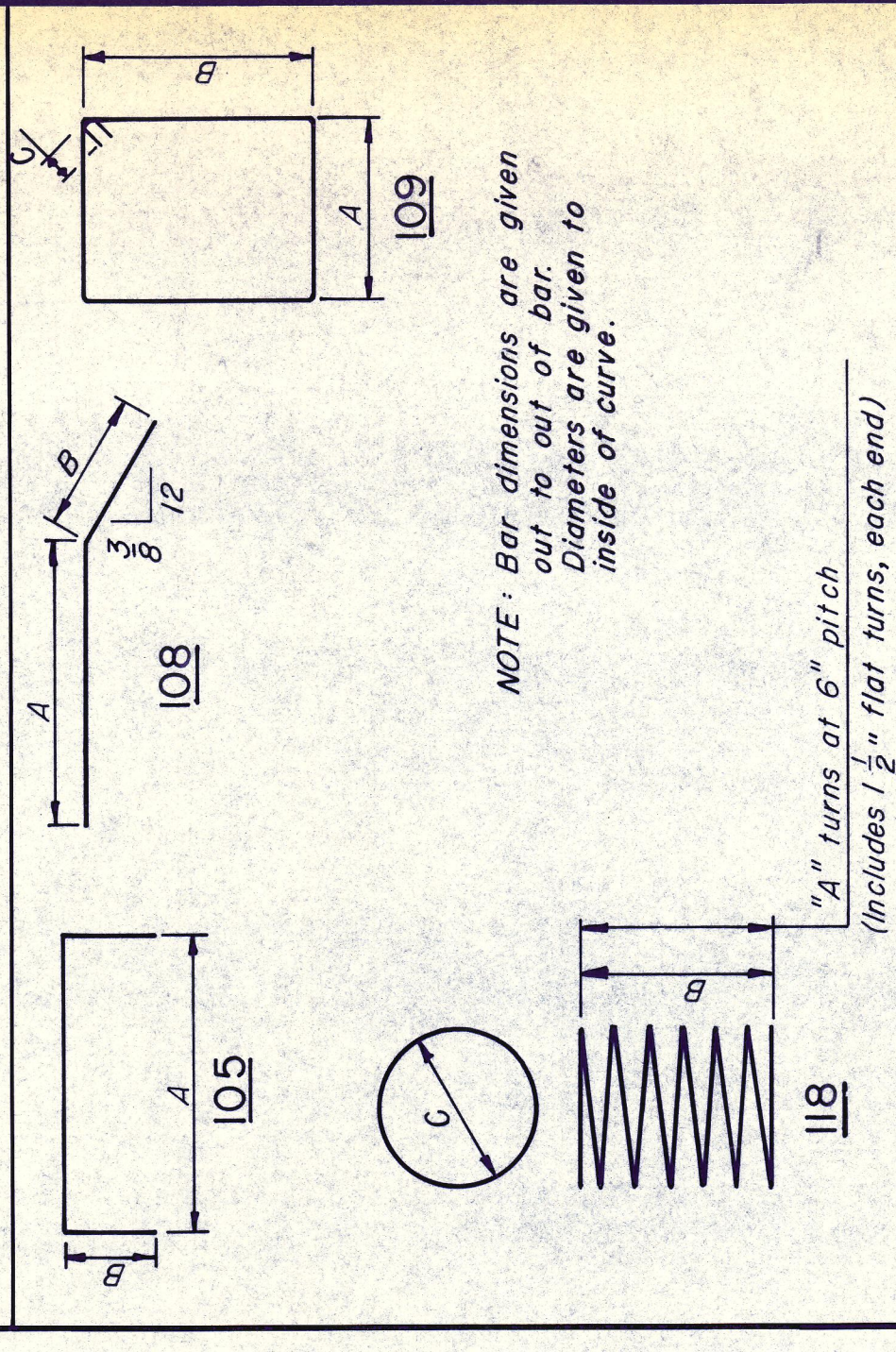


**BILL OF REINFORCING STEEL**

MARK	NO	LENGTH	TYPE	DIMENSIONS			WEIGHT
				A	B	C	
301	8	188'-4"	118	28	12'-2"	2'-1 1/4"	566
401	104	9'-3"	109	2'-3"	2'-0"	0'-4 1/2"	643
402	20	33'-11"	Str				452
403	10	35'-1"	Str				234
404	8	8'-9"	Str				47
501	2	33'-11"	Str				71
502	1	35'-1"	Str				37
503	82	11'-9"	109	0'-7"	5'-7"		1,005
504	20	12'-11"	109	0'-7"	6'-2"		269
901	64	14'-9"	Str				3,210
1101	14	53'-5"	108	49'-10"	3'-7"		3,973
TOTAL							10,507

**BAR BENDING DIAGRAM**



**ESTIMATED QUANTITY SUMMARY**

ITEM NO	DESCRIPTION	UNIT	QUANTITY
416	Drilled Shaft (30"Ø)	LF	74
421	Class C Concrete (Abutment)	CY	57.0
440	Reinforcing Steel	Lb	10,507
556	Filter Material (Type D)	CY	27.3

**GENERAL NOTES:**

All cast-in-place concrete to be Class C. Design  $f_c = 4,200$  psi  
Drilled shaft tip elevations are approximate and shall be varied, as required, to provide a 5'-0" minimum penetration into unweathered rock.  
f.f. and e.f. denote far face and each face, respectively.  
Chamfer all exposed concrete edges 3/4", unless otherwise noted.  
Reinforcing steel shall be ASTM A-615, Grade 60.  
Ø denotes the beam number.  
Ø denotes the column designation  
Maximum drilled shaft load is 181.9 k  
For Armor Joint details, see Standard Drawing No. 28.  
For Section B-B, see Sheet No. S13.  
For Drilled Shaft details, see Sheet No. S15.

NO. \_\_\_\_\_ REVISION \_\_\_\_\_ BY \_\_\_\_\_ DATE \_\_\_\_\_

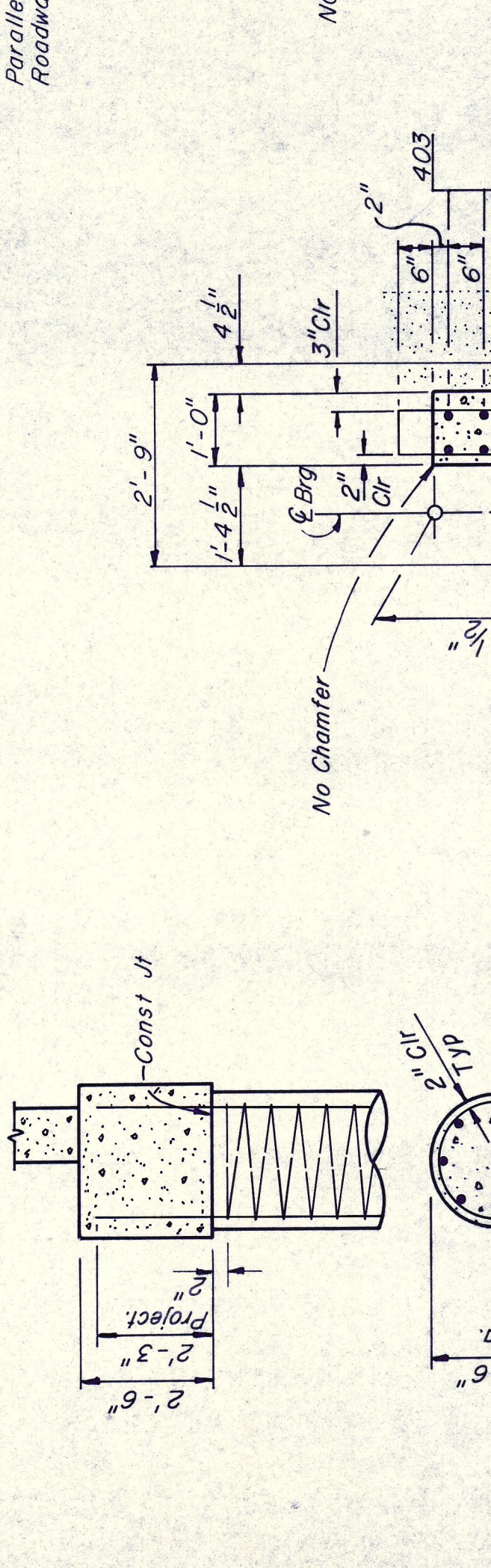
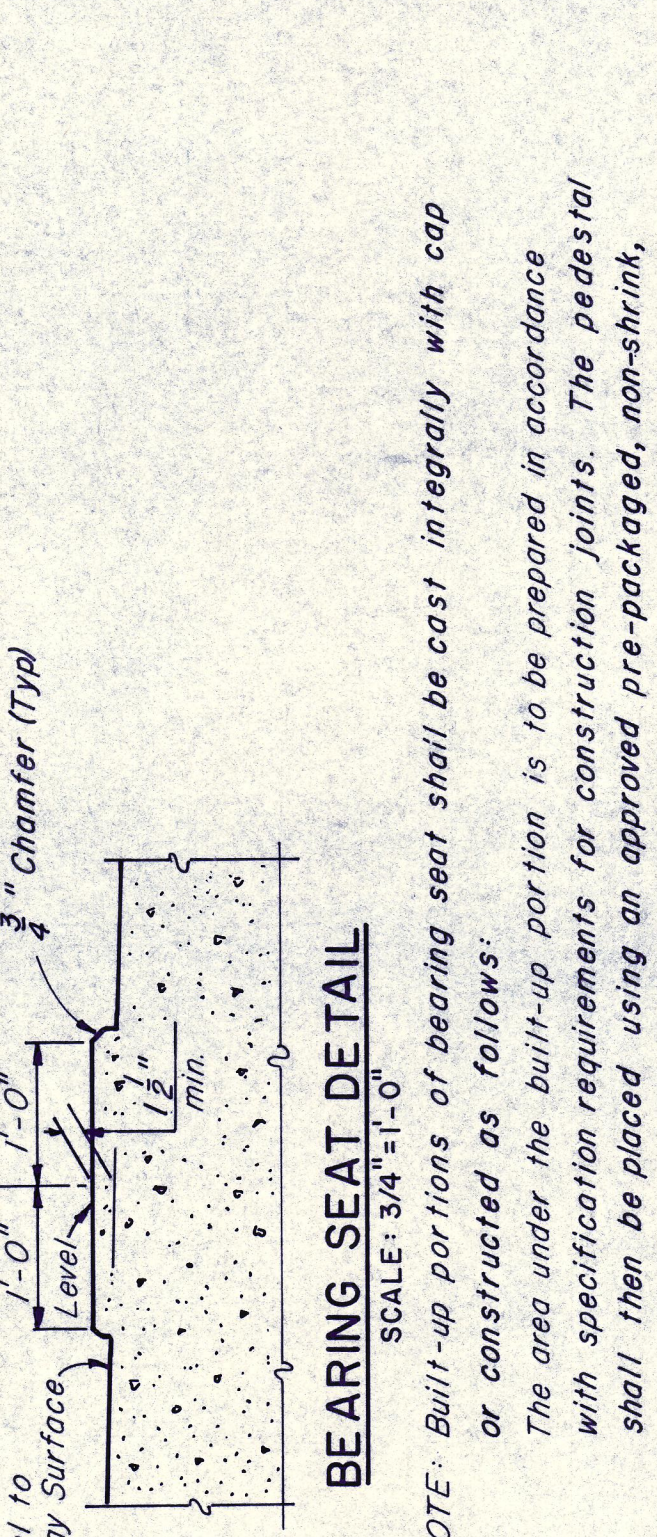
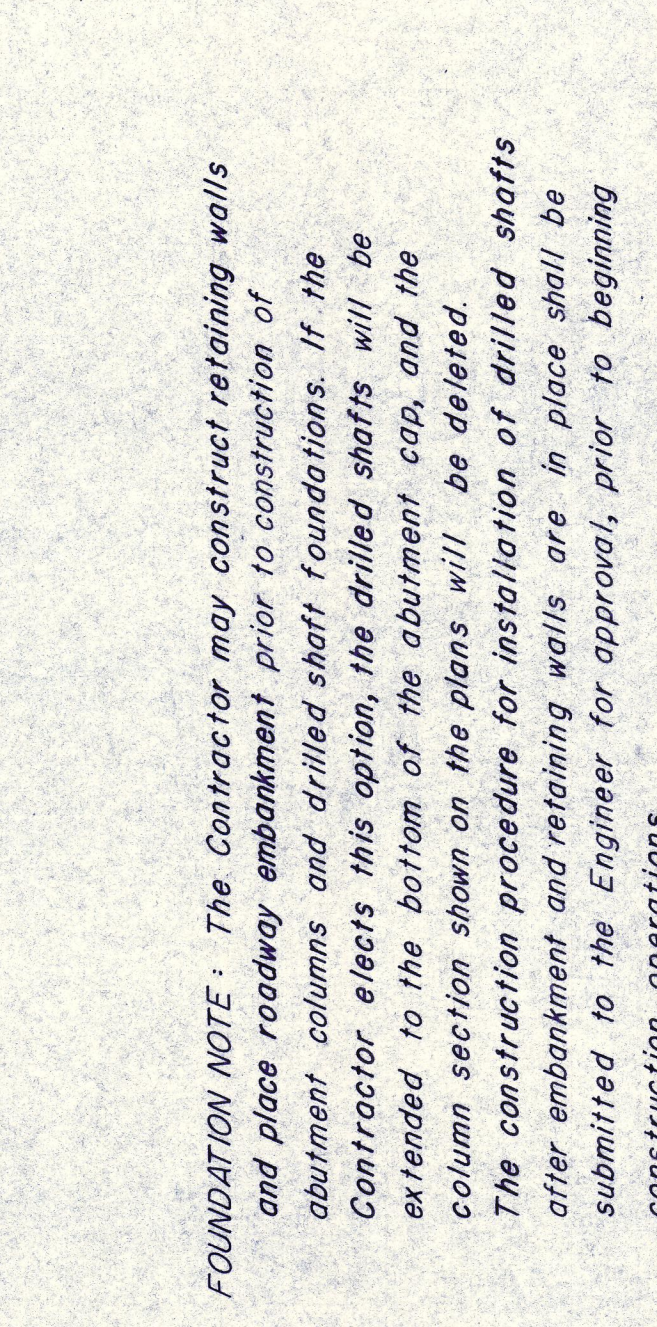
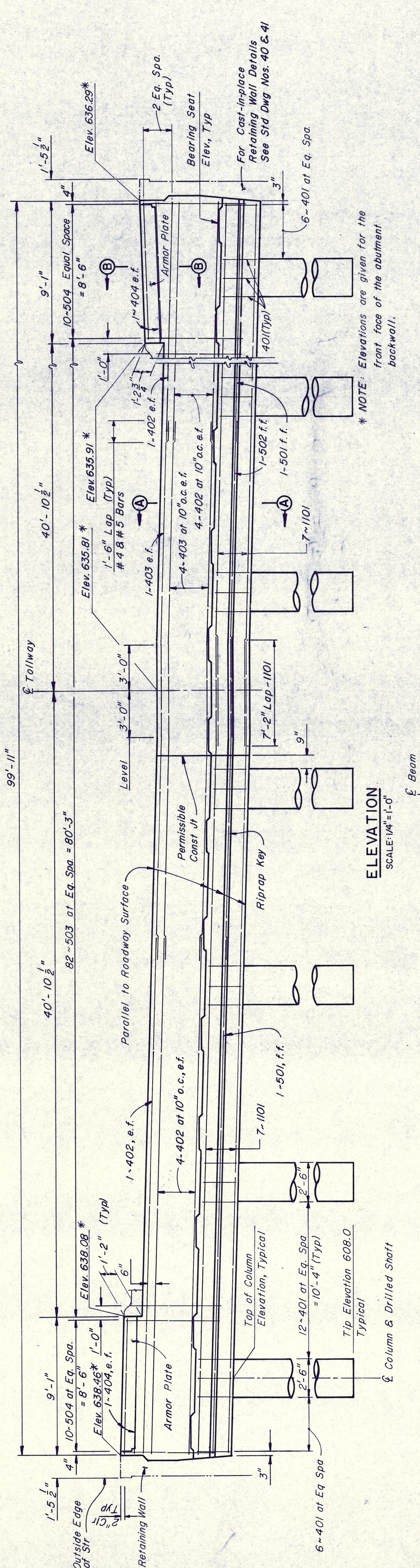
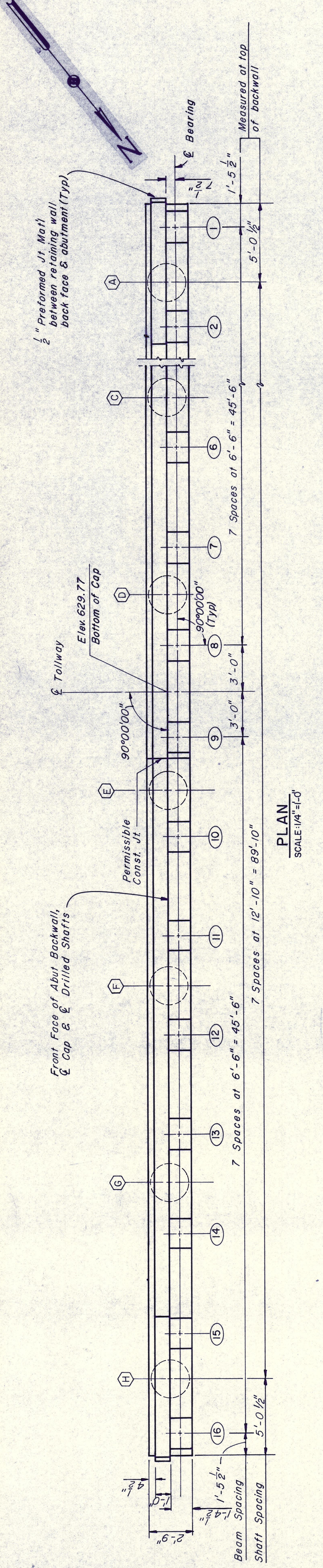
TEXAS TURNPIKE AUTHORITY  
**DALLAS NORTH TOLLWAY**  
WESTGROVE DRIVE OVERPASS  
SOUTH ABUTMENT DETAILS

**Gibbs & Hill, Inc.**  
ENGINEERS DESIGNERS CONSTRUCTORS  
DALLAS

SECTION VII

DRAWN VEP DATE 8-1-83 DESIGNED REF DATE 7-28-83  
CHECKED REF DATE 8-2-83 SCALE AS SHOWN

CONTRACT NO. DNT-115 SHEET S12 OF S21



**COLUMN ELEVATIONS**

LOCATION	COLUMN DESIGNATION	ELEVATION
TOP	(A) through (H)	629.86, 629.67, 629.29, 628.92, 628.54
BOTTOM	(A) through (H)	617.74, 617.36, 617.17, 616.79, 616.04

**BEARING SEAT ELEVATIONS**

BEAM DESIGNATION	ELEVATION
(1) through (16)	632.01, 631.82, 631.63, 632.20, 632.01, 631.44, 632.39, 632.58, 632.77, 632.96, 633.15, 633.34, 633.53, 633.72

**ESTIMATED QUANTITY SUMMARY**

ITEM NO	DESCRIPTION	UNIT	QUANTITY
416	Drilled Shaft (30"Ø)	LF	74
421	Class C Concrete (Abutment)	CY	57.0
440	Reinforcing Steel	Lb	10,507
556	Filter Material (Type D)	CY	27.3