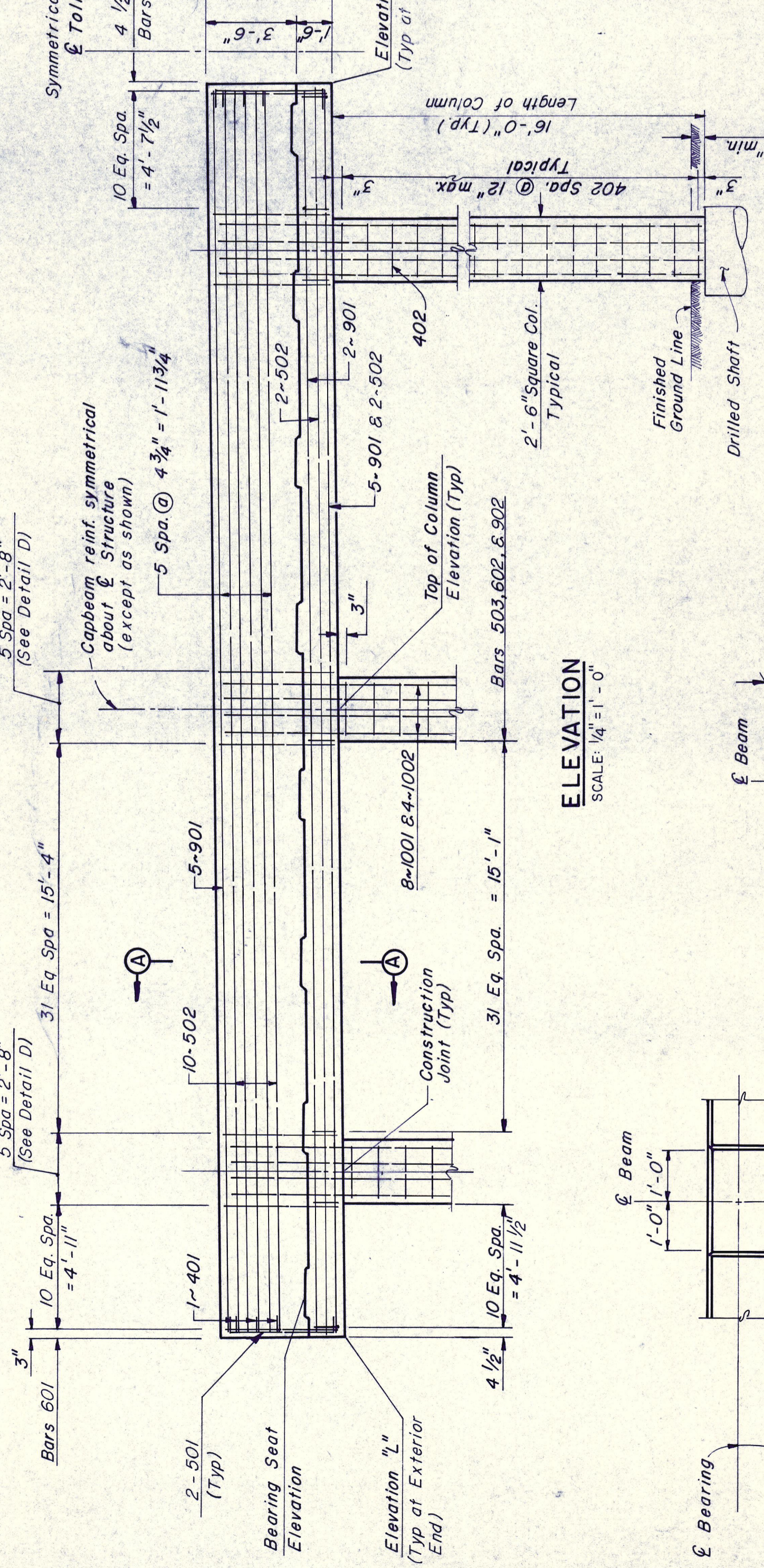


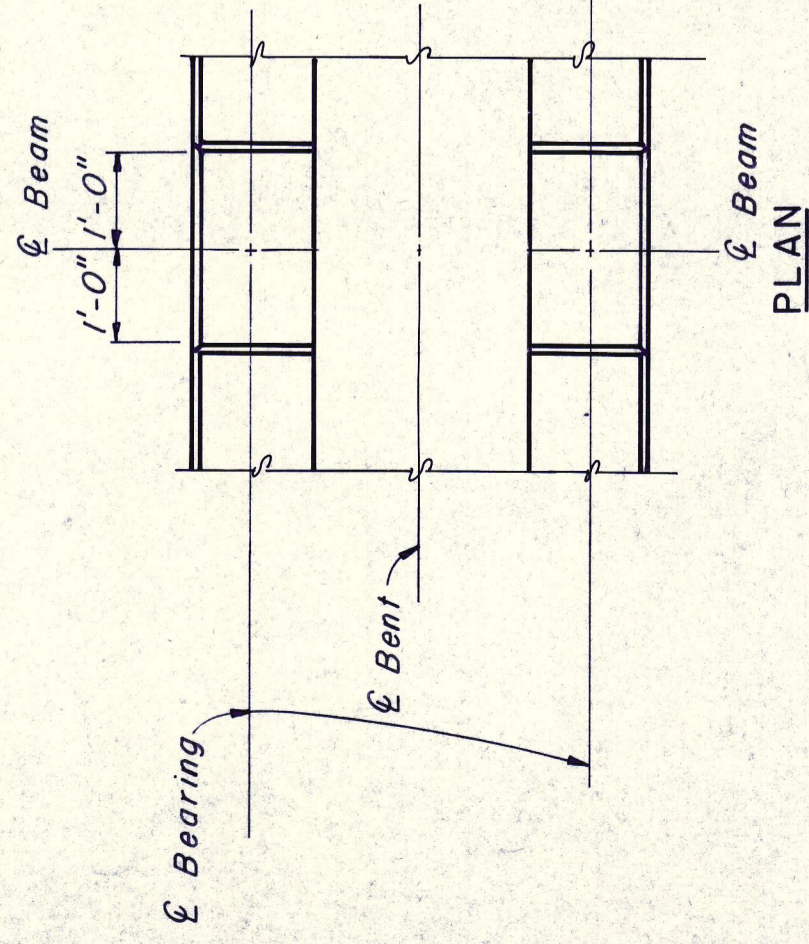
BENTS IW & 2W

BENTS IE & 2E

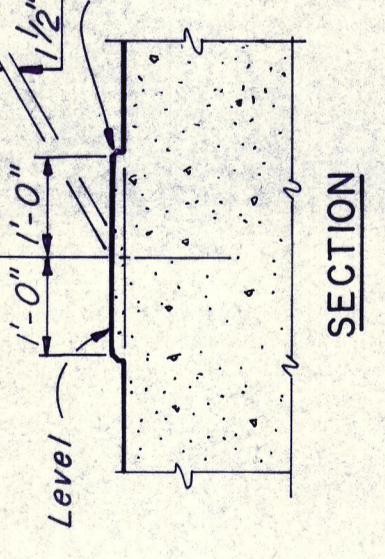
PLAN
SCALE: 1/4" = 1'-0"



ELEVATION
SCALE: 1/4" = 1'-0"



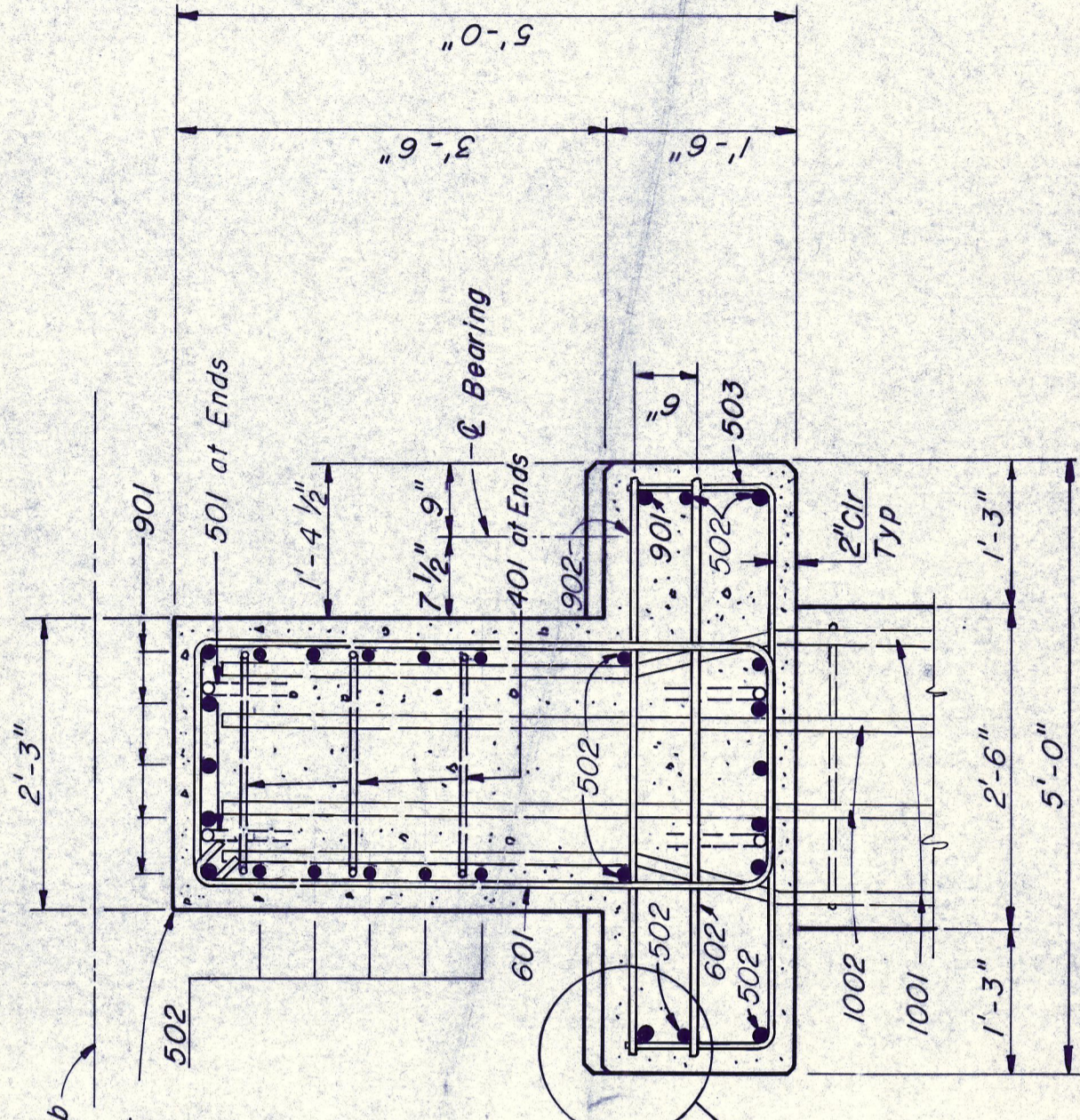
BEARING SEAT DETAILS
SCALE: 1/2" = 1'-0"



NOTE: Built-up portions of bearing seat shall be cast integrally with cap or constructed as follows. The area under the built-up portion is to be prepared in accordance with specification requirements for construction joints. The pedestal shall then be placed using an approved pre-packaged, non-shrink, impact resistant grout containing non-metallic fibers, similar to Set "Impact Resistant Grout." The grout shall be mixed and applied in accordance with the manufacturer's recommendations.

GENERAL NOTES:

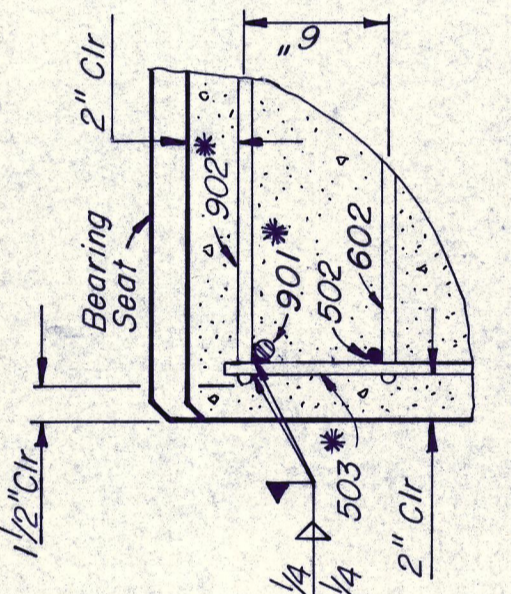
- All cast-in-place concrete to be Class C.
- Design $f'_c = 3,600$ psi
- Reinforcing steel shall be ASTM A-615, Grade 60.
- Chamfer all exposed capbeam edges $3/4"$, except the top of web edges.
- \emptyset denotes the beam number.
- Identifies the columns.
- For location of beam erection inserts to be cast into the capbeams, see Standard Drawing No. 26.
- For drilled shaft and column details see Sheet S15.
- Maximum drilled shaft load is 415.1 k.
- For Detail D see Sheet S15.



SECTION A-A
SCALE: 3/4" = 1'-0"

NOTES: 1. Contractor's attention is being directed to the requirements of the latest edition of the Structural Welding Code for Reinforcing Steel published by the American Welding Society. The preheat requirements of Section 5.2 and the proper welding rods, as defined in Table 5.1, must be strictly adhered to.

2. Bars marked with an asterisk (*) in the Bill of Reinforcing Steel shall conform to the requirements of ASTM A-706, Grade 60.



DETAIL B
SCALE: 1/2" = 1'-0"

BENT DATA

LOCATION	BEARING SEAT ELEVATIONS																TOP OF COLUMN ELEVATIONS										
	BEAM NUMBERS																EAST		WEST								
SPAN	BENT	1	2	3	4	5	6	7	8	9	10	11	12	13	14	15	16	A	B	C	D	E	F	ELEV. "L"	ELEV. "H"	ELEV. "L"	ELEV. "H"
1	1	632.43	632.54	632.65	632.76	632.87	632.98	633.09	633.20	633.31	633.42	633.53	633.63	633.73	633.84	633.95	634.06	630.91	631.21	631.51	631.66	631.96	632.27	632.38	631.54	631.61	630.80
2	1	632.49	632.59	632.70	632.81	632.91	633.02	633.12	633.23	633.34	633.44	633.55	633.65	633.75	633.85	633.95	640.06	633.79	634.09	634.39	634.54	634.84	635.15	635.26	634.42	634.49	633.68
2	2	632.86	632.96	633.06	633.16	633.27	633.37	633.47	633.57	633.67	633.77	633.87	633.97	640.07	640.17	640.27	640.37	633.83	634.13	634.43	634.58	634.88	635.19	635.30	634.46	634.53	633.72
3	2	632.88	632.98	633.08	633.18	633.29	633.39	633.49	633.59	633.69	633.79	633.89	633.99	640.09	640.19	640.29	640.39	633.85	634.15	634.45	634.60	634.90	635.21	635.32	634.48	634.55	633.74

NO.	REVISION	BY	DATE
TEXAS TURNPIKE AUTHORITY			
DALLAS NORTH TOLLWAY			
WESTGROVE DRIVE OVERPASS			
BENT DETAILS			
Gibbs & Hill, Inc.		SECTION VII	
DESIGNERS		CONSTRUCTORS	
DALLAS		DALLAS	
DRAWN	REF	DATE	DESIGNED
VER	B-10-83	8-11-83	8-8-83
CHECKED	REF	DATE	SCALE
AS SHOWN	AS SHOWN		AS SHOWN
CONTRACT NO. DNT-115 SHEET S14 OF S21			