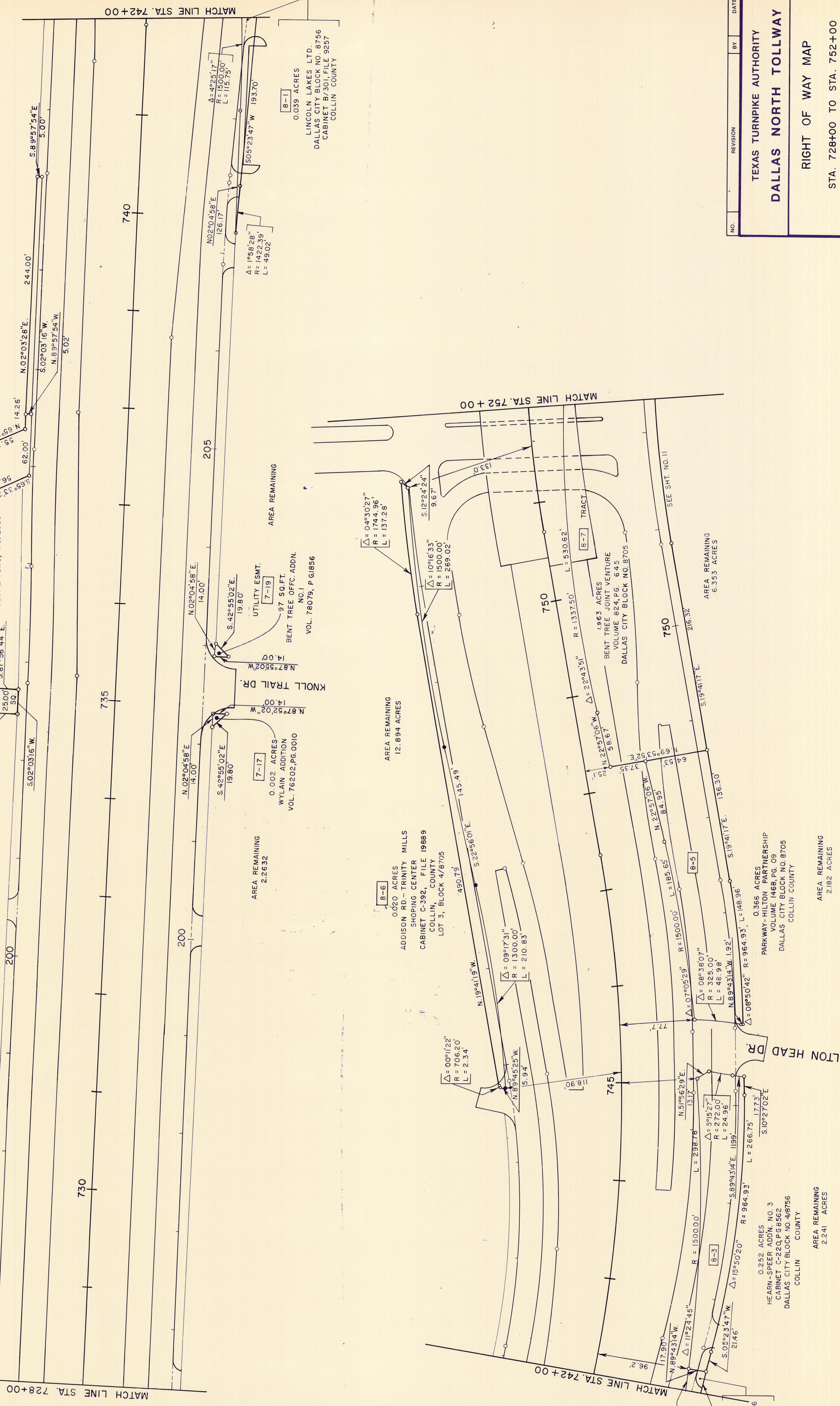


MATCH LINE STA. 728+00

MATCH LINE STA. 742+00

MATCH LINE STA. 752+00

MATCH LINE STA. 742+00



[8-1]
0.039 ACRES
LINCOLN LAKES LTD.
DALLAS CITY BLOCK NO. 8756
CABINET B/301, FILE 9257
COLLIN COUNTY

[8-3]
0.252 ACRES
HEARN-SPEER ADDN. NO. 3
CABINET C-220, PG. 8562
DALLAS CITY BLOCK NO. 48756
COLLIN COUNTY

AREA REMAINING
2.241 ACRES

[8-5]
0.366 ACRES
PARKWAY-HILTON PARTNERSHIP
VOLUME 1468, PG. 09
DALLAS CITY BLOCK NO. 8705
COLLIN COUNTY

AREA REMAINING
2.182 ACRES

[8-6]
0.020 ACRES
ADDISON RD.-TRINITY MILLS
SHOPPING CENTER
CABINET C-392, FILE 19889
COLLIN COUNTY
LOT 3, BLOCK 4/8705

AREA REMAINING
12.894 ACRES

[7-17]
0.002 ACRES
WYLAINE ADDITION
VOL. 76202, PG. 0010

AREA REMAINING
2.2632

[7-19]
UTILITY ESMT.
BENT TREE OFFC. ADDN.
NO. 1
VOL. 78079, PG. 856

AREA REMAINING
6.353 ACRES

[7-12]
DRNGE. ESMT.
2
625 SQ. FT.

[7-12]
DRNGE. ESMT.
1
2,619 SQ. FT.

ZACK TANNERY, TRUSTEE
VOLUME 79119, PG. 2608

AREA REMAINING
0.039 ACRES

[8-1]
0.039 ACRES
LINCOLN LAKES LTD.
DALLAS CITY BLOCK NO. 8756
CABINET B/301, FILE 9257
COLLIN COUNTY

NO.	REVISION	BY	DATE

TEXAS TURNPIKE AUTHORITY
DALLAS NORTH TOLLWAY

RIGHT OF WAY MAP
STA. 728+00 TO STA. 752+00

HNTB
HOWARD NEEDLES TAMMEN & BERGENDOFF

CONTRACT NO. _____ SHEET _____ OF _____

DRAWN C.R.S. DATE 12-6-84 DESIGNED _____ DATE _____
CHECKED _____ DATE _____ SCALE _____