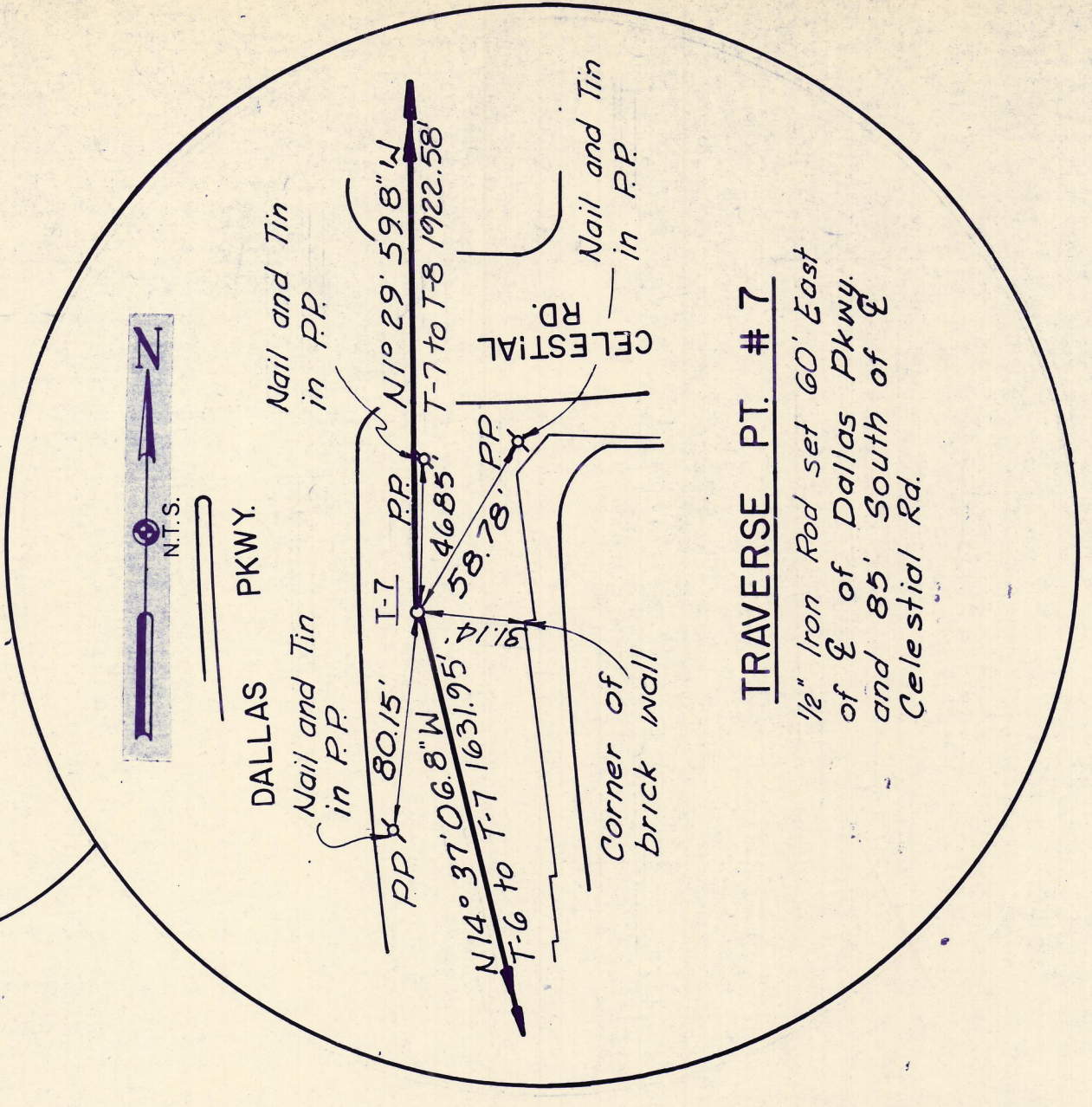
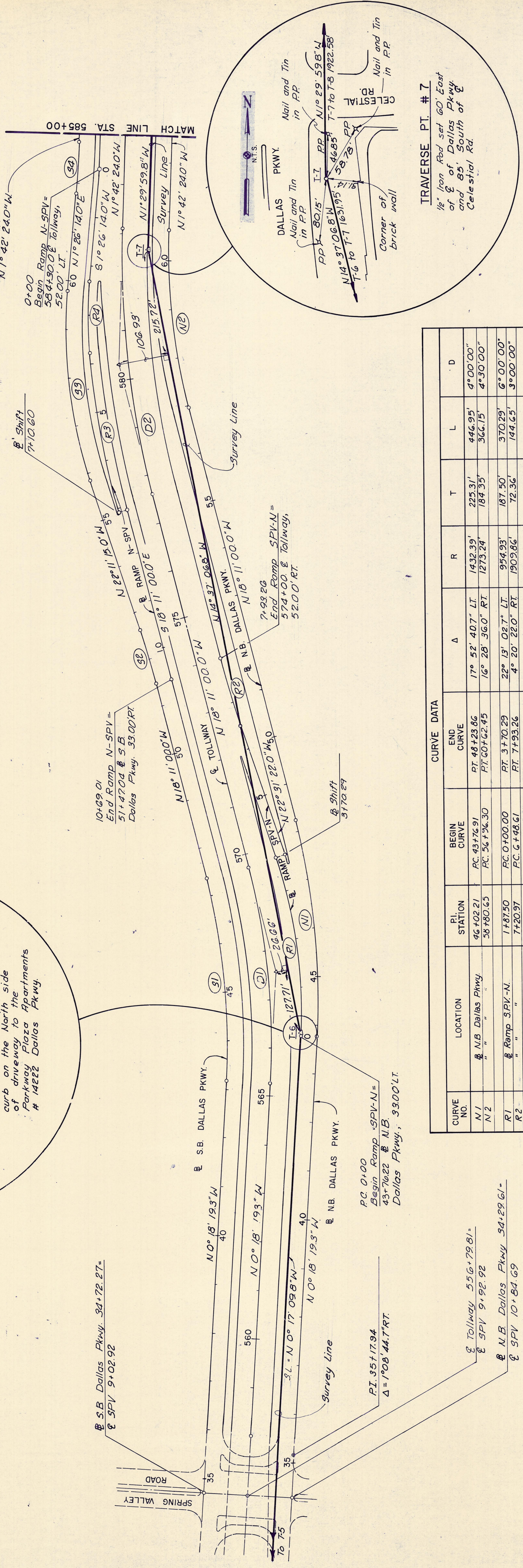


TRAVERSE PT. # 6
 Chiseled "x" on top of curb on the North side of driveway to the Parkway Plaza Apartments # 14222 Dallas Fkwy.



TRAVERSE PT. # 7
 1/2" Iron Rod set 60' East of Dallas Pkwy and 85' South of Celestial Rd.

CURVE DATA

| CURVE NO. | LOCATION | PI. STATION | BEGIN CURVE | END CURVE | Δ | R | T | L | D |
|-----------|------------------|-------------|--------------|--------------|------------------|----------|---------|---------|--------------|
| N1 | N.B. Dallas Pkwy | 46+02.21 | PC 43+76.91 | PT 48+23.86 | 17° 52' 40.7" LT | 1432.39' | 225.31' | 446.95' | 4° 00' 00" |
| N2 | " | 58+80.65 | PC 56+79.30 | PT 60+62.45 | 16° 28' 36.0" RT | 1273.24' | 184.35' | 366.15' | 4° 30' 00" |
| R1 | Ramp SPV-N | 1+87.50 | PC 0+00.00 | PT 3+70.29 | 22° 13' 02.7" LT | 954.93' | 187.50' | 370.29' | 6° 00' 00" |
| R2 | " | 7+20.97 | PC 6+48.61 | PT 7+93.26 | 4° 20' 22.0" RT | 1909.86' | 72.36' | 144.65' | 3° 00' 00" |
| S1 | S.B. Dallas Pkwy | 45+28.38 | PC 43+77.23 | PT 47+36.10 | 17° 52' 40.7" LT | 1342.39' | 211.15' | 418.87' | 4° 16' 03.4" |
| S2 | " | 52+04.27 | PC 51+47.04 | PT 52+61.45 | 4° 00' 15.0" LT | 1637.02' | 57.23' | 114.40' | 9° 30' 00" |
| S3 | " | 57+84.46 | PC 55+84.75 | PT 59+78.50 | 23° 37' 29.0" RT | 954.93' | 193.71' | 393.75' | 6° 00' 00" |
| S4 | " | 62+31.89 | PC 61+79.48 | PT 62+84.28 | 3° 08' 38.0" LT | 1909.86' | 52.41' | 104.80' | 3° 00' 00" |
| R3 | Ramp N-SPV | 51+34.69 | PC 3+77.95 | PT 6+90.77 | 9° 01' 30.4" LT | 1985.86' | 156.73' | 312.81' | 2° 53' 06.7" |
| R4 | " | 31+05.09 | PC 2+31.81 | PT 3+77.95 | 10° 35' 43.5" LT | 790.29' | 73.28' | 146.14' | 7° 15' 00" |
| D1 | Tollway | 567+50.18 | PC 565+24.88 | PT 569+71.83 | 17° 52' 40.7" LT | 1432.39' | 225.31' | 446.95' | 4° 00' 00" |
| D2 | " | 580+37.54 | PC 577+61.02 | PT 583+10.25 | 16° 28' 36.0" RT | 1909.86' | 276.52' | 549.22' | 3° 00' 00" |

| | | | |
|-----|----------|----|------|
| NO. | REVISION | BY | DATE |
| | | | |

TEXAS TURNPIKE AUTHORITY
DALLAS NORTH TOLLWAY

GEOMETRIC CONTROLS &
 TRAVERSE TIES

STA. 585+00 TO STA. 585+00

TurnerCollie & Braden Inc
 Consulting Engineers

SECTION **VII**

| | | | | | | | |
|---------|-----|------|------|----------|-----------|------|------|
| DRAWN | LJD | DATE | 3-83 | DESIGNED | GGS | DATE | 3-83 |
| CHECKED | JBL | DATE | 3-83 | SCALE | 1" = 100' | | |

CONTRACT NO. **DNT-114** SHEET **R4** OF **R103**

AS BUILT PLANS