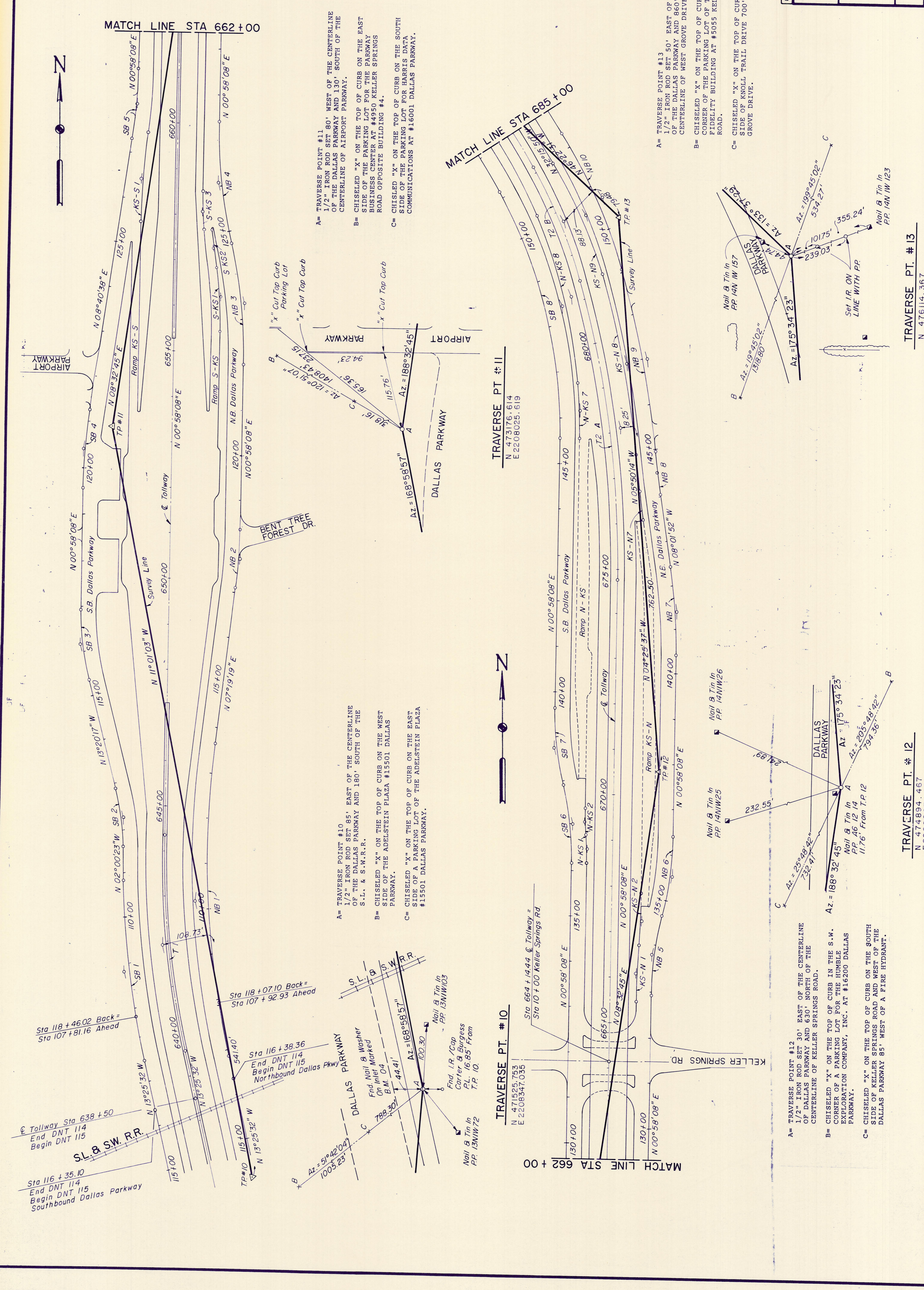


NOTES:
1. Refer to plan-profile sheets for additional alignment details.



A= TRAVERSE POINT #11
1/2" IRON ROD SET 80' WEST OF THE CENTERLINE OF THE DALLAS PARKWAY AND 130' SOUTH OF THE CENTERLINE OF AIRPORT PARKWAY.

B= CHISELED "X" ON THE TOP OF CURB ON THE EAST SIDE OF THE PARKING LOT FOR THE PARKWAY BUILDINGS CENTER AT #4950 KELLER SPRINGS ROAD OPPOSITE BUILDING #4.

C= CHISELED "X" ON THE TOP OF CURB ON THE SOUTH SIDE OF THE PARKING LOT FOR HARRIS DATA COMMUNICATIONS AT #16001 DALLAS PARKWAY.

A= TRAVERSE POINT #10
1/2" IRON ROD SET 85' EAST OF THE CENTERLINE OF THE DALLAS PARKWAY AND 180' SOUTH OF THE S.L. & S.W.R.R.

B= CHISELED "X" ON THE TOP OF CURB ON THE WEST SIDE OF THE ADELSTEIN PLAZA #15501 DALLAS PARKWAY.

C= CHISELED "X" ON THE TOP OF CURB ON THE EAST SIDE OF A PARKING LOT OF THE ADELSTEIN PLAZA #15501 DALLAS PARKWAY.

TRAVERSE PT. #10
N 471825.783
E 2208347.035

TRAVERSE PT. #11
N 473176.614
E 2208025.619

TRAVERSE PT. #12
N 474693.457
E 2208283.761

TRAVERSE PT. #13
N 476114.367
E 2208199.319

A= TRAVERSE POINT #13
1/2" IRON ROD SET 50' EAST OF THE CENTERLINE OF THE DALLAS PARKWAY AND 860' SOUTH OF THE CENTERLINE OF WEST GROVE DRIVE.

B= CHISELED "X" ON THE TOP OF CURB AT THE N.E. CORNER OF THE PARKING LOT OF THE FIDELITY BUILDING AT #5055 KELLER SPRINGS ROAD.

C= CHISELED "X" ON THE TOP OF CURB ON THE EAST SIDE OF KNOLL TRAIL DRIVE, 700' SOUTH OF WEST GROVE DRIVE.

A= TRAVERSE POINT #12
1/2" IRON ROD SET 30' EAST OF THE CENTERLINE OF DALLAS PARKWAY AND 630' NORTH OF THE CENTERLINE OF KELLER SPRINGS ROAD.

B= CHISELED "X" ON THE TOP OF CURB IN THE S.W. CORNER OF A PARKING LOT FOR THE HUMBLE EXPLORATION COMPANY, INC. AT #16200 DALLAS PARKWAY.

C= CHISELED "X" ON THE TOP OF CURB ON THE SOUTH SIDE OF KELLER SPRINGS ROAD AND WEST OF THE DALLAS PARKWAY 85' WEST OF A FIRE HYDRANT.

A= 188°32'45"
Nail & Tin In A
PP 146 12 14
11/76 From T.P. 12

B= 175°34'23"
Nail & Tin In B
PP 141W/26

C= 205°44'42"
Nail & Tin In C
PP 141W/25

A= 175°34'23"
Nail & Tin In A
PP 141W/157

B= 199°45'10"
Nail & Tin In B
PP 141W/123

C= 199°45'10"
Nail & Tin In C
PP 141W/123

NO.	REVISION	BY	DATE
TEXAS TURNPIKE AUTHORITY			
DALLAS NORTH TOLLWAY			
GEOMETRIC CONTROLS & TRAVERSE TIES			
STA 638 + 50 TO STA 685 + 00			
Gibbs & Hill, Inc.			SECTION VII
ENGINEERS DESIGNERS CONSTRUCTORS			DRAWN
DALLAS			DATE
DATE 7/13/84			DESIGNED
CHECKED 7/27/84			DATE 7/29/84
SCALE 1"=100'			SHEET
CONTRACT NO. DNT-115			CI
SHEET			OF
C3			C3