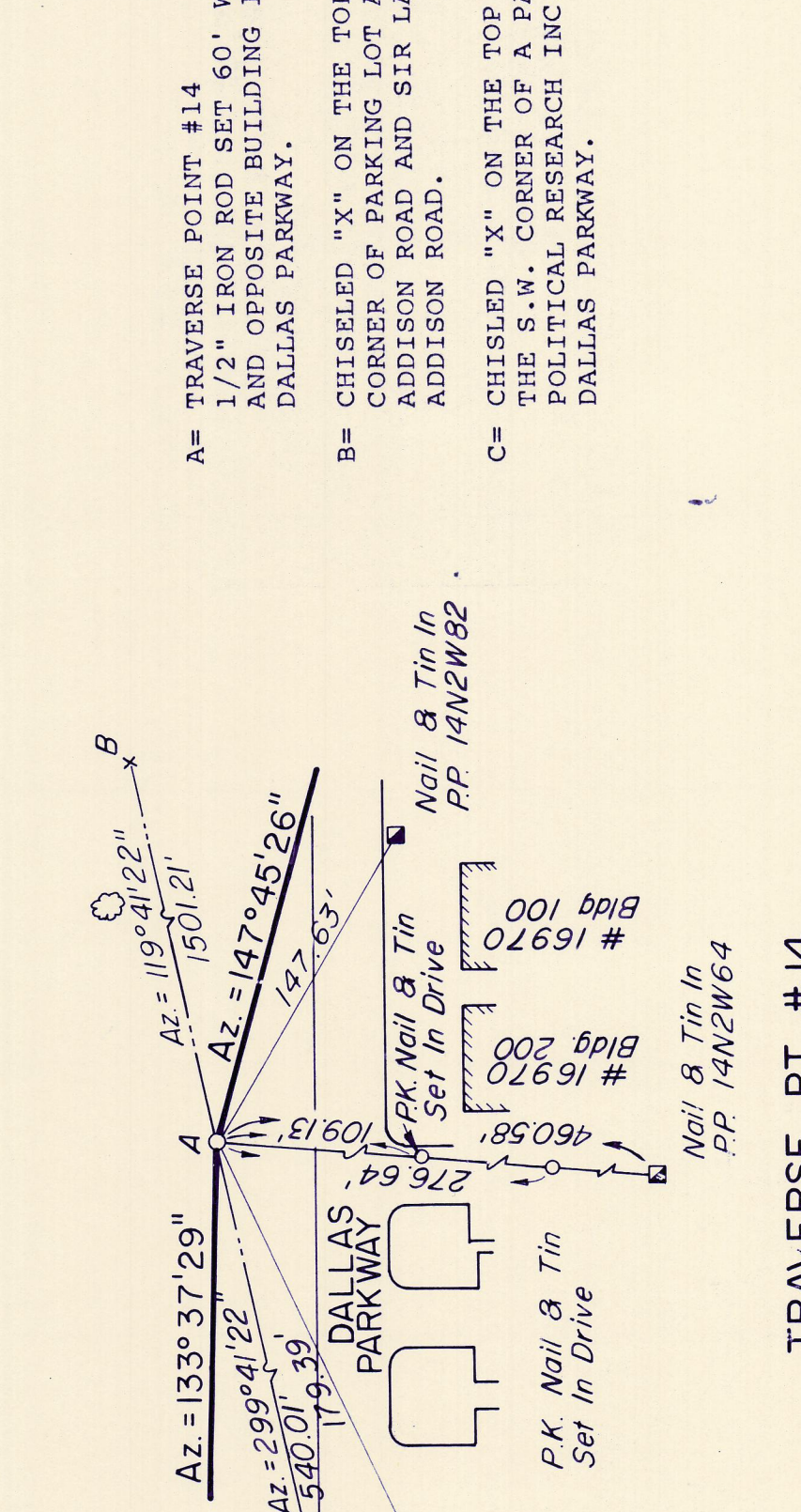
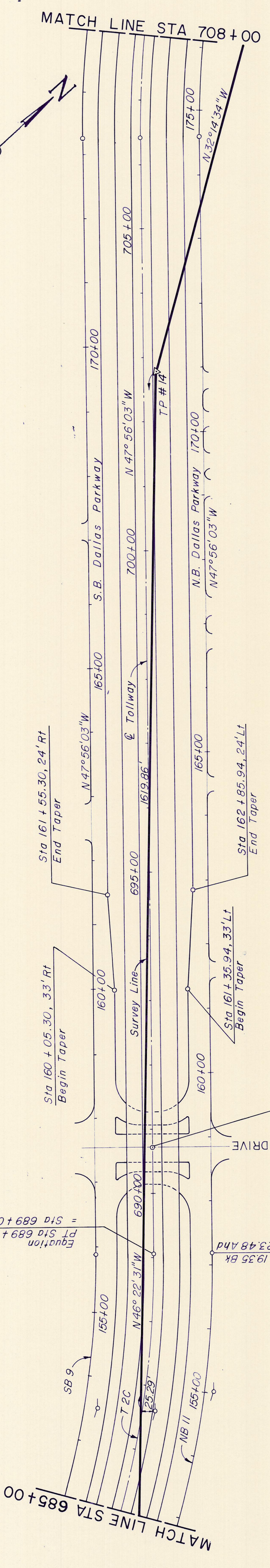
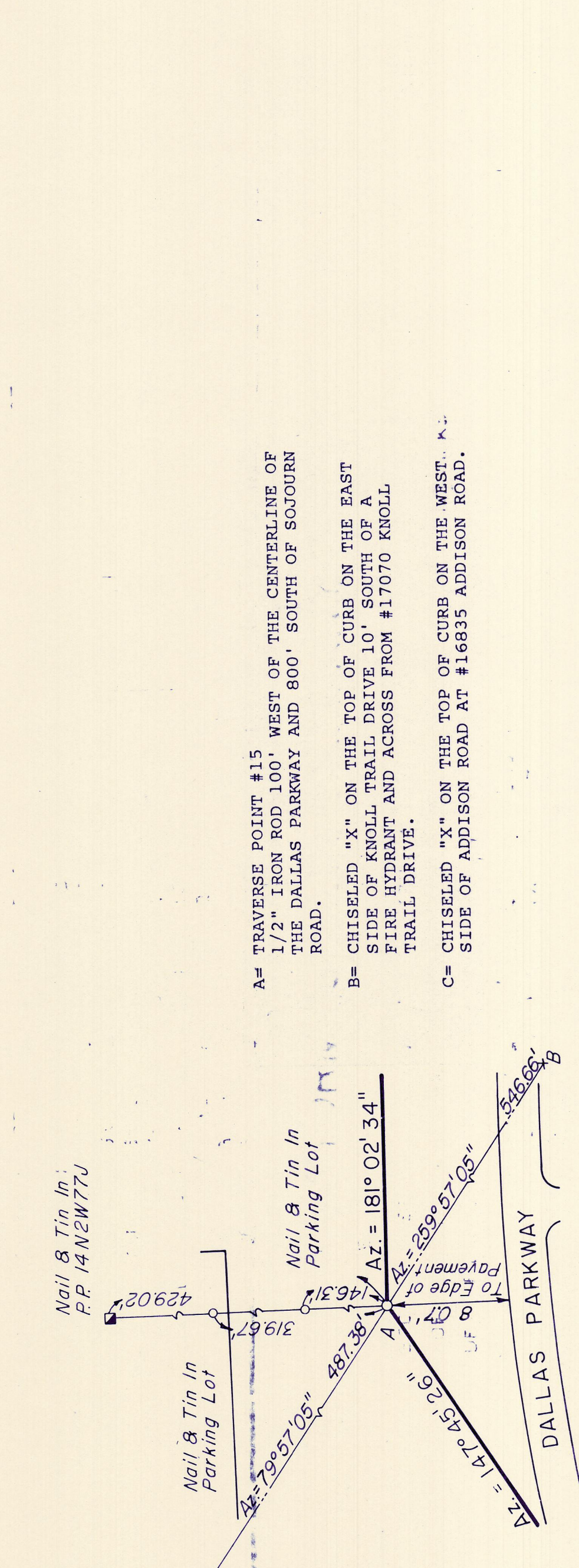
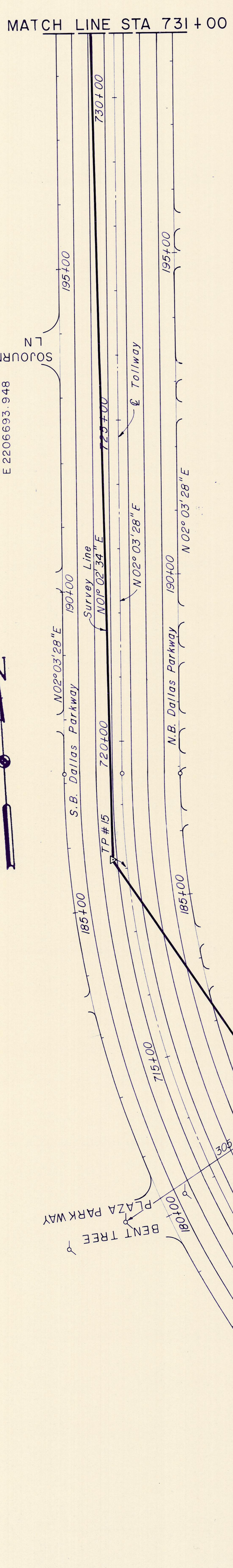


NOTES:  
1. Refer to plan-profile sheets for additional alignment details.



TRaverse PT. # 14  
N 47°53'39.623  
E 2206693.948

- A= TRAVERSE POINT #14  
1/2" IRON ROD SET 60' WEST OF DALLAS PARKWAY  
AND OPPOSITE BUILDING 100 & 200 OF #16970  
DALLAS PARKWAY.
- B= CHISELED "X" ON THE TOP OF CURB ON THE S.E.  
CORNER OF PARKING LOT AT THE CORNER OF  
ADDISON ROAD AND SIR LANCELOT AT #16775  
ADDISON ROAD.
- C= CHISELED "X" ON THE TOP OF CURB 10' EAST OF  
THE S.W. CORNER OF THE PARKING LOT FOR THE  
POLITICAL RESEARCH INC. BUILDING AT #16850  
DALLAS PARKWAY.



TRaverse PT. # 15  
N 47°53'39.623  
E 2206693.948

- A= TRAVERSE POINT #15  
1/2" IRON ROD 100' WEST OF THE CENTERLINE OF  
THE DALLAS PARKWAY AND 800' SOUTH OF SOJOURN  
ROAD.
- B= CHISELED "X" ON THE TOP OF CURB ON THE EAST  
SIDE OF KNOLL TRAIL DRIVE 10' SOUTH OF A  
FIRE HYDRANT AND ACROSS FROM #17070 KNOLL  
TRAIL DRIVE.
- C= CHISELED "X" ON THE TOP OF CURB ON THE WEST. A.  
SIDE OF ADDISON ROAD AT #16835 ADDISON ROAD.

TRaverse PT. # 15  
N 47°53'39.623  
E 2206693.948

NO.	REVISION	BY	DATE
<b>TEXAS TURNPIKE AUTHORITY</b> <b>DALLAS NORTH TOLLWAY</b>			
GEOMETRIC CONTROLS & TRAVERSE TIES STA 685 + 00 TO STA 731 + 00			
<b>Gibbs &amp; Hill, Inc.</b> ENGINEERS DESIGNERS CONSTRUCTORS DALLAS			SECTION VII
DRAWN VER REF	DATE 7/3/84	DESIGNED DWC	DATE 6/29/84
CHECKED REF	DATE 7/19/84	SCALE 1" = 100'	CONTRACT NO. DNT-115 SHEET C2 OF C3