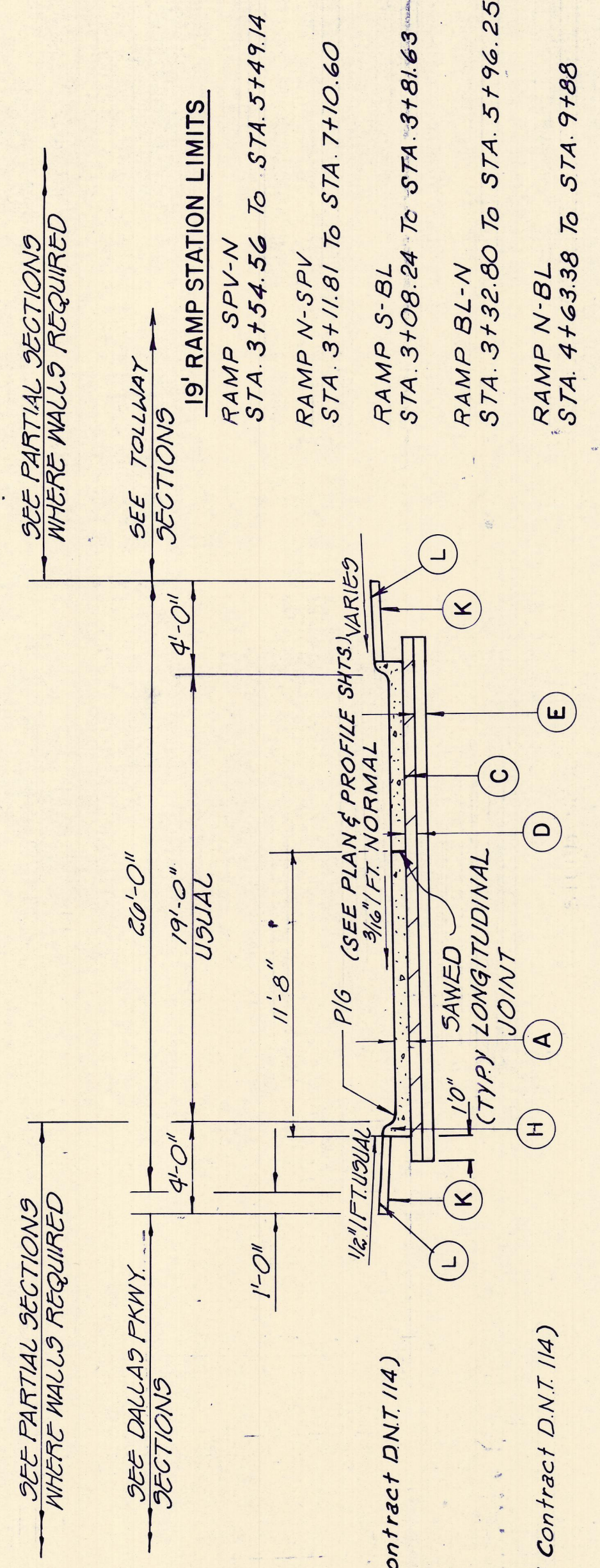


**THREE LANE DALLAS PARKWAY**

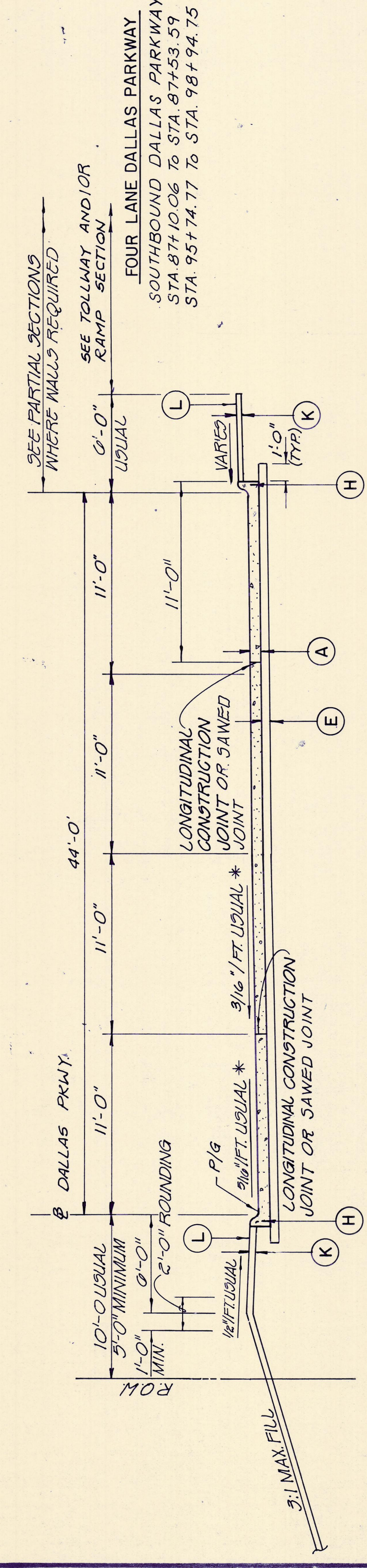
(SECTION SHOWN FOR SOUTHBOUND - REVERSE FOR NORTHBOUND)  
THIS SECTION DRAWN AS CUT CONDITION. SEE FOUR LANE DALLAS PARKWAY SECTION FOR FILL CONDITIONS

**THREE LANE DALLAS PARKWAY**  
NORTHBOUND DALLAS PARKWAY  
STA. 47+42.53 TO STA. 78+76.50  
STA. 89+35.71 TO STA. 92+35.69  
STA. 95+64.46 TO STA. 105+07.07  
STA. 110+79.79 TO STA. 116+20 (End Contract DNT 114)

SOUTHBOUND DALLAS PARKWAY  
STA. 45+00 TO STA. 51+47.04  
STA. 55+03.77 TO STA. 84+60.16  
STA. 101+46.51 TO STA. 116+25 (End Contract D.N.T. 114)



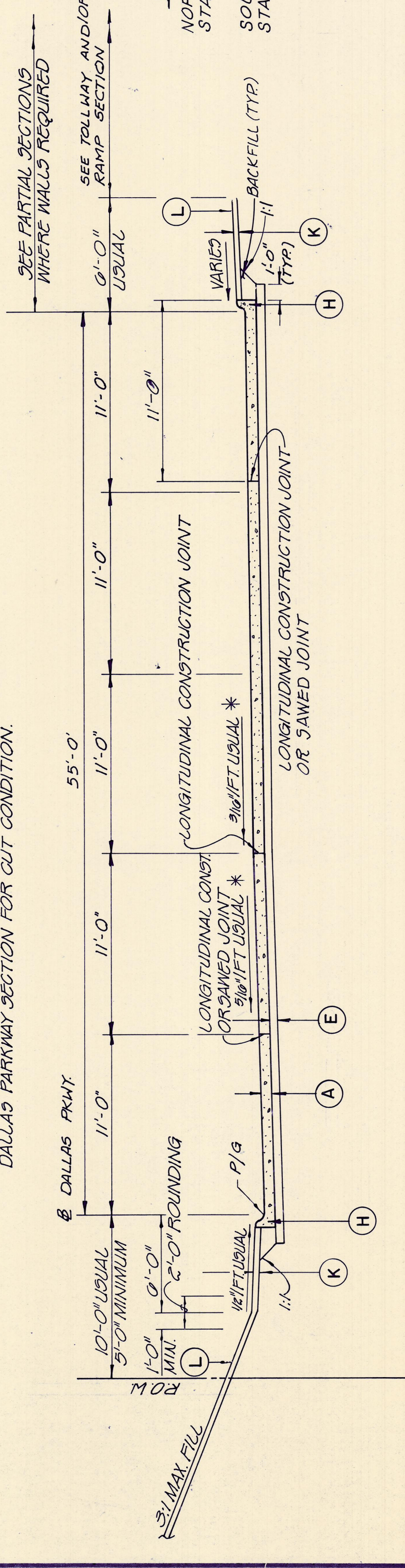
**RAMP PAVING**



**FOUR LANE DALLAS PARKWAY**

(SECTION SHOWN FOR SOUTHBOUND - REVERSE FOR NORTHBOUND)  
THIS SECTION DRAWN AS FILL CONDITION. SEE THREE LANE DALLAS PARKWAY SECTION FOR CUT CONDITION.

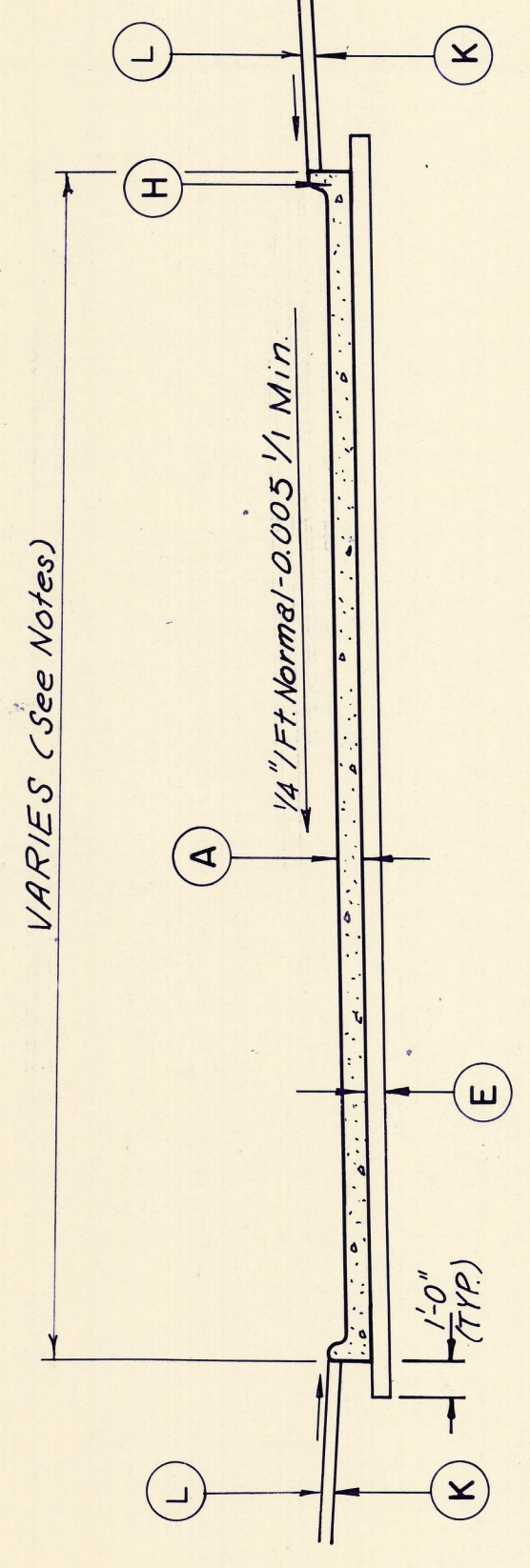
**FOUR LANE DALLAS PARKWAY**  
SOUTHBOUND DALLAS PARKWAY  
STA. 87+10.06 TO STA. 87+53.59  
STA. 95+74.77 TO STA. 98+94.75



**FIVE LANE DALLAS PARKWAY**

(SECTION SHOWN FOR SOUTHBOUND - REVERSE FOR NORTHBOUND)  
THIS SECTION DRAWN AS CUT CONDITION. SEE FOUR LANE DALLAS PARKWAY SECTION FOR FILL CONDITIONS

**FIVE LANE DALLAS PARKWAY**  
NORTHBOUND DALLAS PARKWAY  
STA. 79+70.88 TO STA. 87+02.85  
SOUTHBOUND DALLAS PARKWAY  
STA. 90+41.41 TO STA. 92+67.99



**CROSS STREET PAVING**

(THIS SECTION SHOWN FOR TYPE OF PAVEMENT AND SUBGRADE ONLY. FOR ALL DIMENSIONS, ELEVATIONS & JOINTS SEE PAVING PLAN SHEETS.)

**LEGEND**

- (A) CONCRETE PAVEMENT (WATER CEMENT RATIO) 8 IN.
- (B) HOT MIX ASPHALTIC CONCRETE PAVEMENT (TYPE D) 2 IN.
- (C) EMULSIFIED ASPHALT TREATMENT (SS-1)-(SEE NOTE 3)
- (D) SOIL CEMENT BASE 4 IN. (DENSITY CONTROL)
- (E) LIME TREATED SUBGRADE (DENSITY CONTROL) 6 IN.
- (G) MONOLITHIC CURB (TYPE M) 4 IN.
- (H) MONOLITHIC CURB (TYPE A) 6 IN.
- (K) FURNISHING AND PLACING TOPSOIL (4 IN.)
- (L) BROADCAST SEEDING (TYPE 4)

- NOTE:**
- \* 1. SEE 50% SCALE PLAN AND PROFILE SHEETS FOR LOCATION OF PAVEMENT CROSS SLOPE TRANSITION AND REVERSE SLOPE.
  2. WHERE STATION LIMITS ARE NOT SHOWN THE PAVEMENT WIDTHS ARE NOT TYPICAL. THEREFORE REFER TO PAVING PLANS FOR APPROPRIATE ALIGNMENT.
  3. USE MS-1 WHEN AMBIENT TEMPERATURE IS ABOVE 70° F. AND USE SS-1 WHEN AMBIENT TEMPERATURE IS LESS THAN 70° F.

NO.	REVISION	BY	DATE
TEXAS TURNPIKE AUTHORITY			
<b>DALLAS NORTH TOLLWAY</b>			
TYPICAL ROADWAY SECTIONS			SECTION <b>VI</b>
TurnerCollie & Braden Inc. <small>Consulting Engineers</small>			CONTRACT NO. <b>DNT-114</b> SHEET <b>R.8</b> OF <b>1103</b>
DRAWN	DATE	DESIGNED	G.C.S. DATE
CHECKED	J.B.L.	3-83	3-83
		SCALE	3/16" = 1'-0"

**AS BUILT PLANS**