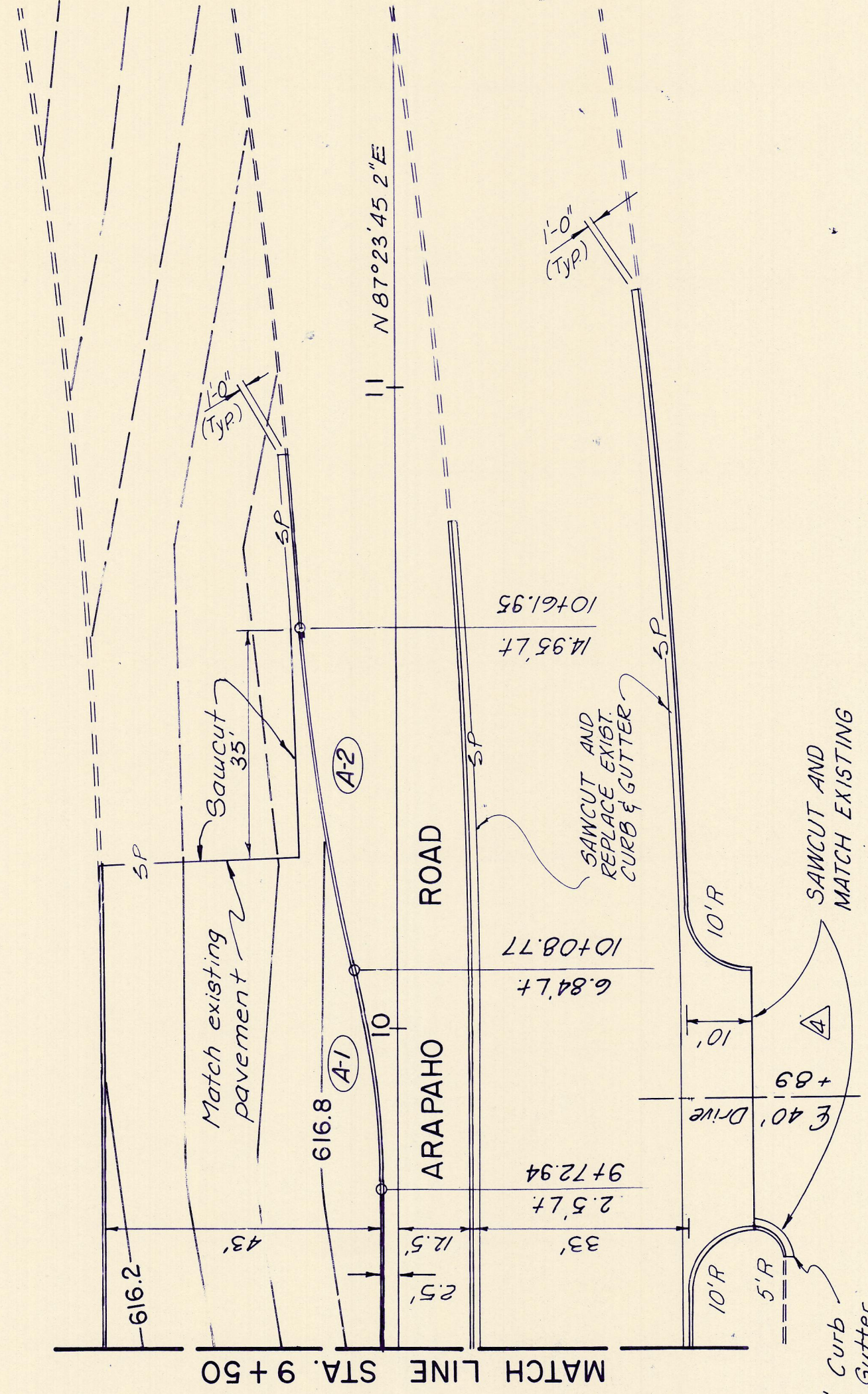
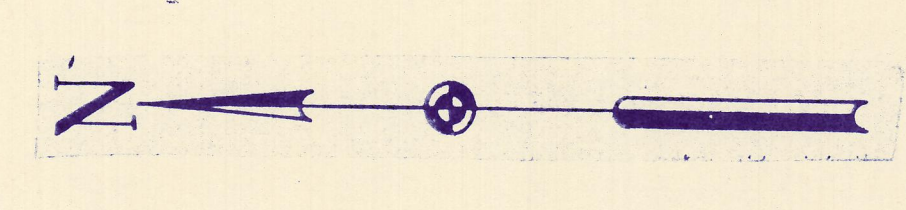
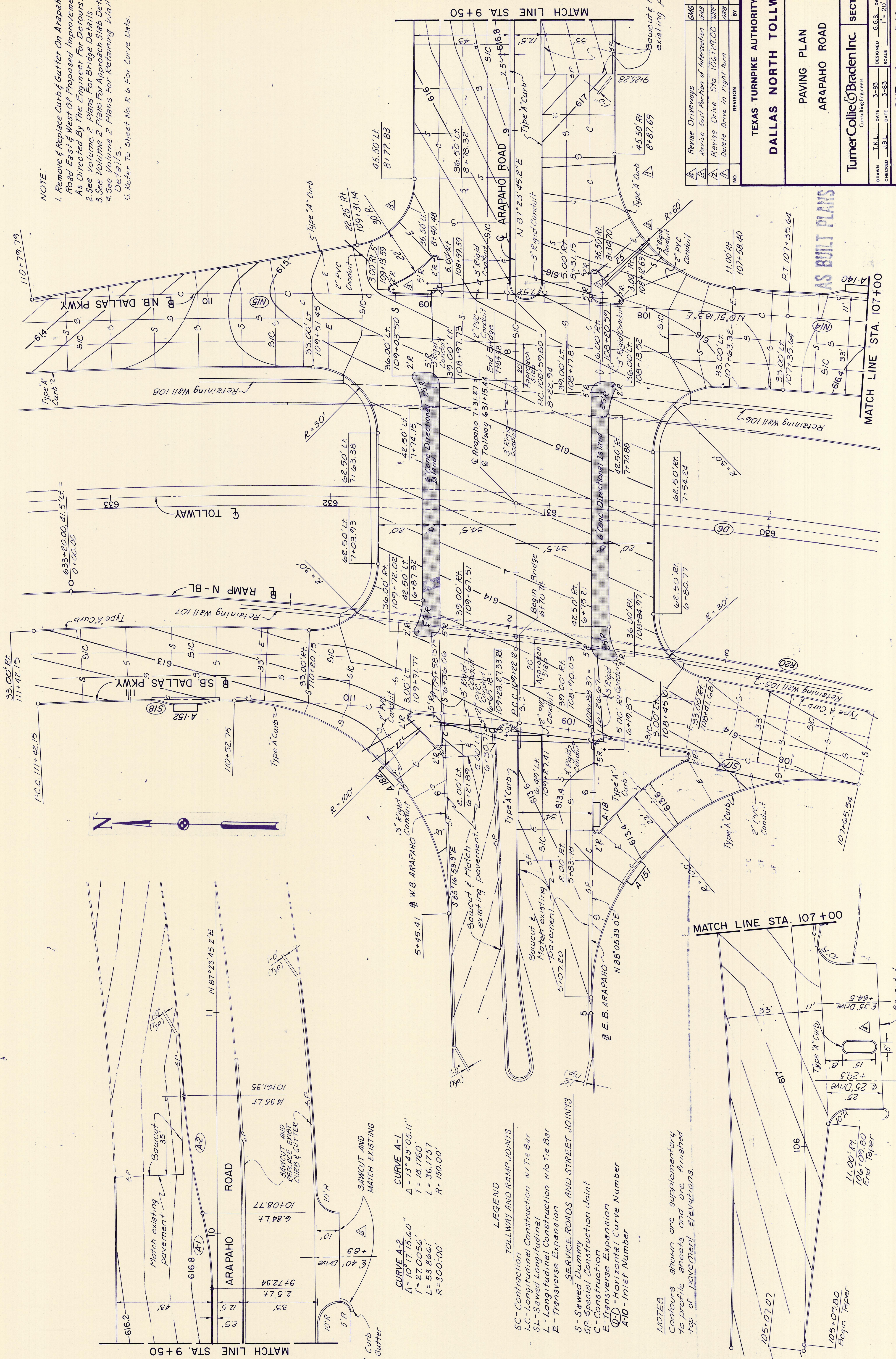


NOTE:

1. Remove & Replace Curb & Gutter On Arapaho Road East & West Of Proposed Improvements As Directed By The Engineer For Detours.
2. See Volume 2 Plans For Bridge Details.
3. See Volume 2 Plans For Approach Slab Details.
4. See Volume 2 Plans For Retaining Wall Details.
5. Refer To Sheet No. R & For Curve Data.



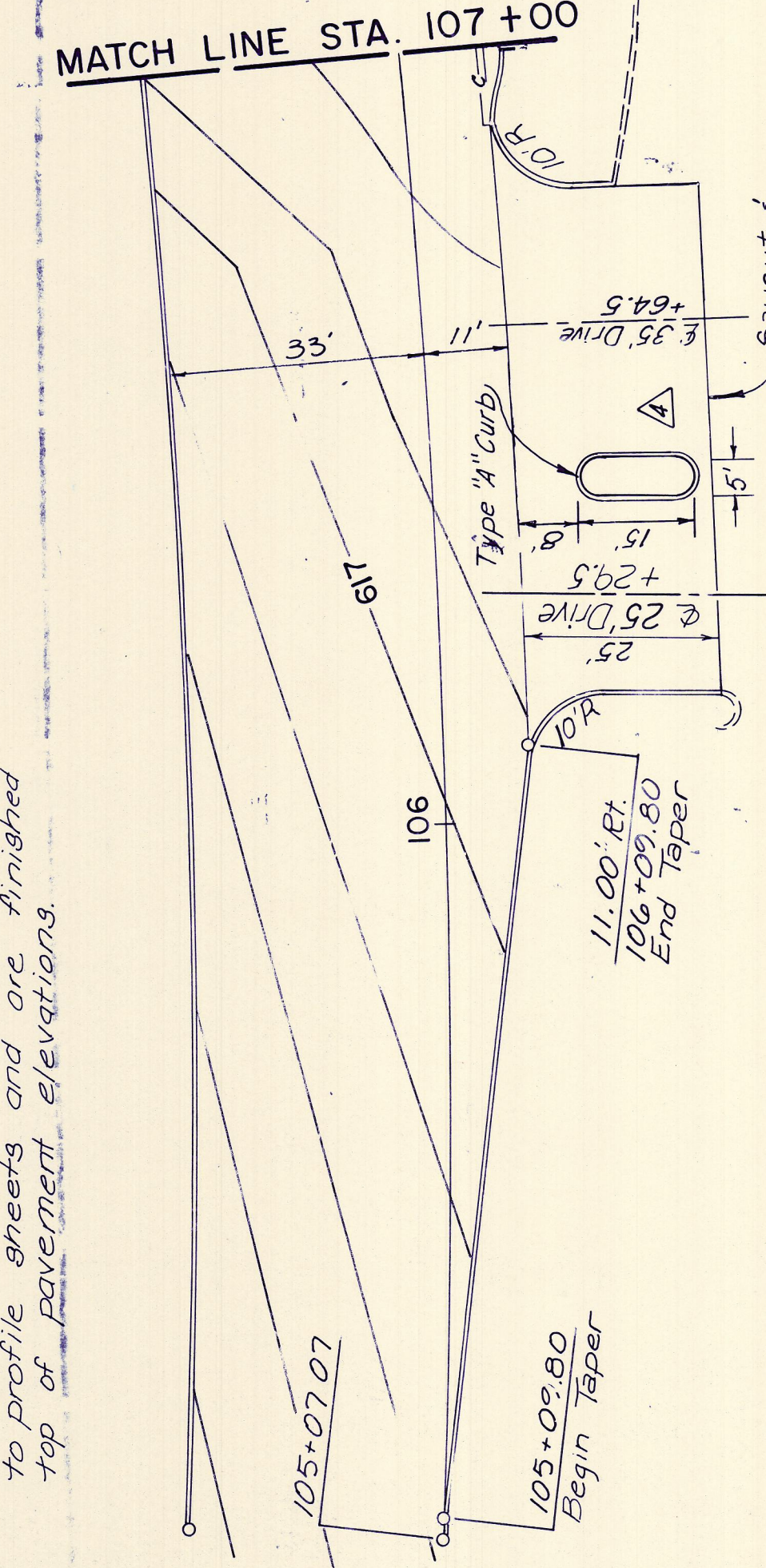
CURVE A-2
 $\Delta = 107^\circ 15.60"$
 $T = 27.0056'$
 $L = 53.8661'$
 $R = 300.00'$

CURVE A-1
 $\Delta = 13^\circ 43' 03.11"$
 $T = 18.1760'$
 $L = 36.1757'$
 $R = 150.00'$

- LEGEND**
- SC - Contraction
 - LC - Longitudinal Construction w/ Tie Bar
 - SL - Sawed Longitudinal
 - L - Longitudinal Construction w/o Tie Bar
 - E - Transverse Expansion
- SERVICE ROADS AND STREET JOINTS**
- S - Sawed Dummy
 - SP - Special Construction Joint
 - C - Construction
 - E - Transverse Expansion
 - (DL) - Horizontal Curve Number
 - A10 - Inlet Number

NOTES

Contours shown are supplementary to profile sheets and are finished top of pavement elevations.



MATCH LINE STA. 9+50

MATCH LINE STA. 107+00

TEXAS TURNPIKE AUTHORITY DALLAS NORTH TOLLWAY PAVING PLAN ARAPAH0 ROAD		SECTION VII TURNER COLLEGE BRADEN INC.
DRAWN: I.K.L. CHECKED: J.B.L. DATE: 3-83 SCALE: 1" = 20'	DESIGNED: G.S.S. DATE: 11-9-84 DRAWN: J.P.P. DATE: 9-6-84	CONTRACT NO. DNT-114 SHEET R40 OF R103

AS BUILT PLANS