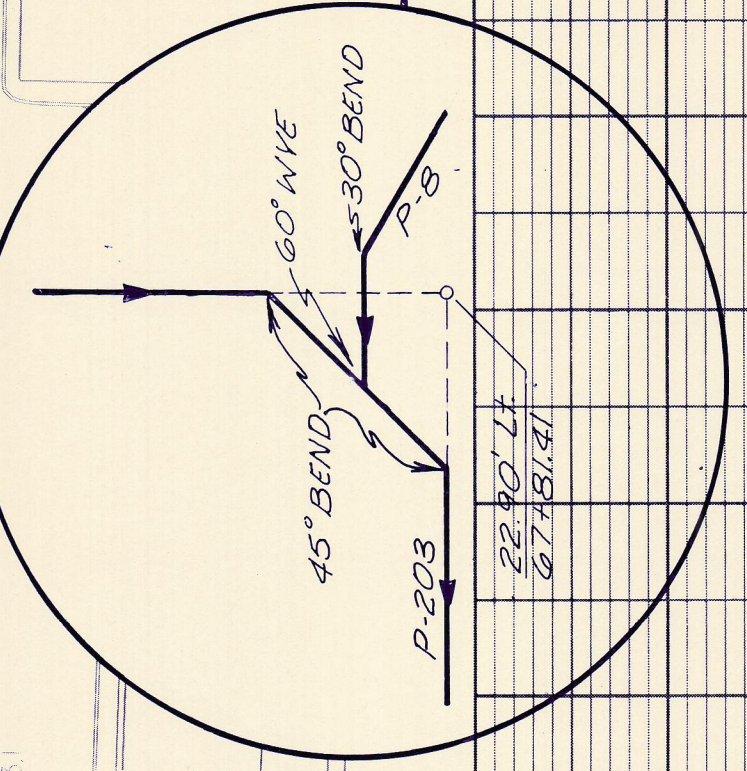
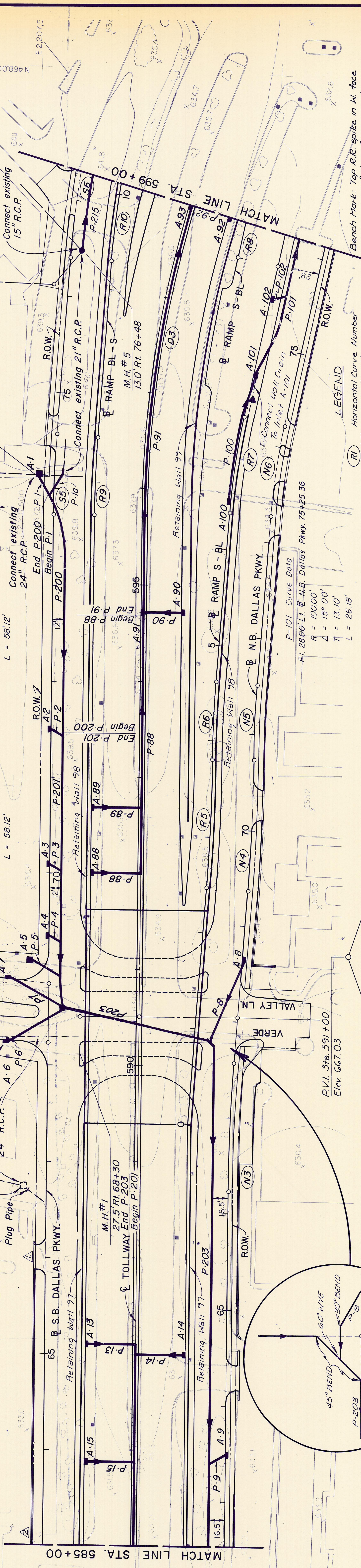


Connect P-202 to existing inlet.  
No separate payment will be made  
for connection to existing inlet.

P-201 Curve Data  
PI 12.00' Rt. S.B. Dallas Pkwy. 68+56.85  
R = 11100'  
Δ = 30°00'  
T = 29.74'  
L = 58.12'

P-200 Curve Data  
PI 12.00' Rt. S.B. Dallas Pkwy. 73+63.78  
R = 11100'  
Δ = 30°00'  
T = 29.74'  
L = 58.12'

End Pt. 17.00' Lt. 74+14.00



LEGEND

- (RI) Horizontal Curve Number
- AZI Inlet Designation
- Existing Light Pole
- Existing Power/Telephone Pole
- Existing Tree
- Existing Fence
- Existing Building
- Storm Sewer Manhole
- Storm Sewer redirection of flow
- Reinf. Conc. Box Sewer
- Reinf. Conc. Pipe Sewer

Bench Mark: Top RR spike in N. face of transformer pole located between the N. curb of Portaway Place N. Apts. & S. curb of parking lot to Village on the Parkway at 132.41 East of Sta 597+89.0 Elev. 656.59

NO.	REVISION	BY	DATE
660	Revise Driveway Location	CAS	9-18-84
655			
650			
645			
640			
635	Revise Avt + P-17	GMG	7-14-86

TEXAS TURNPIKE AUTHORITY  
**DALLAS NORTH TOLLWAY**  
 STORM SEWER PLAN  
 STA. 585+00 TO STA. 599+00

TurnerCollie & Braden Inc.  
 Consulting Engineers  
 SECTION VI

AS BUILT PLANS

Note  
 1. See sheets R56, R57, R58, R63, R64 and R65 for pipe profiles.  
 2. For Lateral Connection Detail See Sheet R68

Existing Ground

Verde Valley  
 1275' V.C.