

AS BUILT PLANS

CONTRACT NO.	DNT-114	SHEET	R72	OF	R103
DATE	7-83	TRACED	DATE	7-83	SECTION
CHECKED	J.B.L.	DATE	7-83	SCALE	1/4" = 1'-0"
MADE	D.W.G.	DATE	7-83	PROJECT	SECTION VI

TURNER COLLIE & BRADEN INC.

TEXAS TURNPIKE AUTHORITY  
DALLAS NORTH TOLLWAY

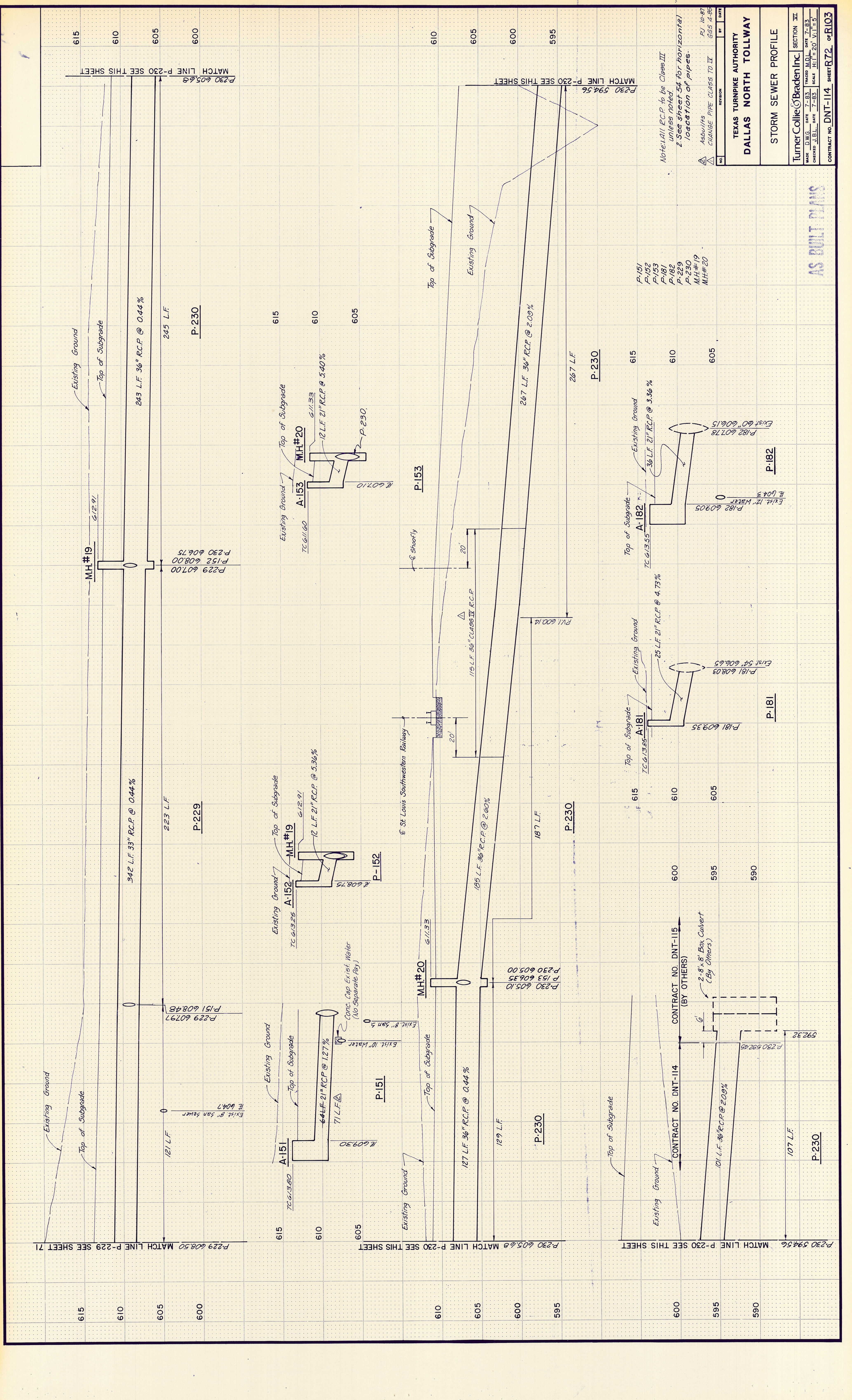
STORM SEWER PROFILE

REVISION  
NO. BY DATE

1. Asbuilts  
2. CHANGE PIPE CLASS TO IV  
3. See sheet 54 for horizontal location of pipes.

Note: All R.C.P. to be Class III unless noted

10-87  
655 4-88



615  
610  
605  
600

Existing Ground  
Top of Subgrade

243 L.F. 36" R.C.P. @ 0.44%

245 L.F. P-230

M.H.#19  
612.91

223 L.F. P-229

342 L.F. 36" R.C.P. @ 0.44%

M.H.#19  
612.91

12 L.F. 21" R.C.P. @ 5.36%

615  
610  
605  
600

Existing Ground  
Top of Subgrade

267 L.F. 36" R.C.P. @ 2.09%

267 L.F. P-230

M.H.#20  
611.33

187 L.F. P-230

185 L.F. 36" R.C.P. @ 2.60%

187 L.F. P-230

M.H.#20  
611.33

25 L.F. 21" R.C.P. @ 4.73%

25 L.F. P-230

M.H.#19  
612.91

36 L.F. 21" R.C.P. @ 3.36%

36 L.F. P-230

M.H.#20  
611.33

101 L.F. 36" R.C.P. @ 2.09%

107 L.F. P-230

615  
610  
605  
600

Existing Ground  
Top of Subgrade

101 L.F. 36" R.C.P. @ 2.09%

107 L.F. P-230

M.H.#20  
611.33

101 L.F. 36" R.C.P. @ 2.09%

107 L.F. P-230

615  
610  
605  
600

Existing Ground  
Top of Subgrade

101 L.F. 36" R.C.P. @ 2.09%

107 L.F. P-230

M.H.#20  
611.33

101 L.F. 36" R.C.P. @ 2.09%

107 L.F. P-230

615  
610  
605  
600

Existing Ground  
Top of Subgrade

101 L.F. 36" R.C.P. @ 2.09%

107 L.F. P-230

M.H.#20  
611.33

101 L.F. 36" R.C.P. @ 2.09%

107 L.F. P-230

615  
610  
605  
600

Existing Ground  
Top of Subgrade

101 L.F. 36" R.C.P. @ 2.09%

107 L.F. P-230

M.H.#20  
611.33

101 L.F. 36" R.C.P. @ 2.09%

107 L.F. P-230

615  
610  
605  
600

Existing Ground  
Top of Subgrade

101 L.F. 36" R.C.P. @ 2.09%

107 L.F. P-230

M.H.#20  
611.33

101 L.F. 36" R.C.P. @ 2.09%

107 L.F. P-230

615  
610  
605  
600

Existing Ground  
Top of Subgrade

101 L.F. 36" R.C.P. @ 2.09%

107 L.F. P-230

M.H.#20  
611.33

101 L.F. 36" R.C.P. @ 2.09%

107 L.F. P-230

615  
610  
605  
600

Existing Ground  
Top of Subgrade

101 L.F. 36" R.C.P. @ 2.09%

107 L.F. P-230

M.H.#20  
611.33

101 L.F. 36" R.C.P. @ 2.09%

107 L.F. P-230

615  
610  
605  
600

Existing Ground  
Top of Subgrade

101 L.F. 36" R.C.P. @ 2.09%

107 L.F. P-230

M.H.#20  
611.33

101 L.F. 36" R.C.P. @ 2.09%

107 L.F. P-230

615  
610  
605  
600

Existing Ground  
Top of Subgrade

101 L.F. 36" R.C.P. @ 2.09%

107 L.F. P-230

M.H.#20  
611.33

101 L.F. 36" R.C.P. @ 2.09%

107 L.F. P-230

615  
610  
605  
600

Existing Ground  
Top of Subgrade

101 L.F. 36" R.C.P. @ 2.09%

107 L.F. P-230

M.H.#20  
611.33

101 L.F. 36" R.C.P. @ 2.09%

107 L.F. P-230

615  
610  
605  
600

Existing Ground  
Top of Subgrade

101 L.F. 36" R.C.P. @ 2.09%

107 L.F. P-230

M.H.#20  
611.33

101 L.F. 36" R.C.P. @ 2.09%

107 L.F. P-230

615  
610  
605  
600

Existing Ground  
Top of Subgrade

101 L.F. 36" R.C.P. @ 2.09%

107 L.F. P-230

M.H.#20  
611.33

101 L.F. 36" R.C.P. @ 2.09%

107 L.F. P-230

615  
610  
605  
600

Existing Ground  
Top of Subgrade

101 L.F. 36" R.C.P. @ 2.09%

107 L.F. P-230

M.H.#20  
611.33

101 L.F. 36" R.C.P. @ 2.09%

107 L.F. P-230

615  
610  
605  
600

Existing Ground  
Top of Subgrade

101 L.F. 36" R.C.P. @ 2.09%

107 L.F. P-230

M.H.#20  
611.33

101 L.F. 36" R.C.P. @ 2.09%

107 L.F. P-230

615  
610  
605  
600

Existing Ground  
Top of Subgrade

101 L.F. 36" R.C.P. @ 2.09%

107 L.F. P-230

M.H.#20  
611.33

101 L.F. 36" R.C.P. @ 2.09%

107 L.F. P-230

615  
610  
605  
600

Existing Ground  
Top of Subgrade

101 L.F. 36" R.C.P. @ 2.09%

107 L.F. P-230

M.H.#20  
611.33

101 L.F. 36" R.C.P. @ 2.09%

107 L.F. P-230

615  
610  
605  
600

Existing Ground  
Top of Subgrade

101 L.F. 36" R.C.P. @ 2.09%

107 L.F. P-230

M.H.#20  
611.33

101 L.F. 36" R.C.P. @ 2.09%

107 L.F. P-230

615  
610  
605  
600

Existing Ground  
Top of Subgrade

101 L.F. 36" R.C.P. @ 2.09%

107 L.F. P-230

M.H.#20  
611.33

101 L.F. 36" R.C.P. @ 2.09%

107 L.F. P-230

615  
610  
605  
600

Existing Ground  
Top of Subgrade

101 L.F. 36" R.C.P. @ 2.09%

107 L.F. P-230

M.H.#20  
611.33

101 L.F. 36" R.C.P. @ 2.09%

107 L.F. P-230

615  
610  
605  
600

Existing Ground  
Top of Subgrade

101 L.F. 36" R.C.P. @ 2.09%

107 L.F. P-230

M.H.#20  
611.33

101 L.F. 36" R.C.P. @ 2.09%

107 L.F. P-230

615  
610  
605  
600

Existing Ground  
Top of Subgrade

101 L.F. 36" R.C.P. @ 2.09%

107 L.F. P-230

M.H.#20  
611.33

101 L.F. 36" R.C.P. @ 2.09%

107 L.F. P-230

615  
610  
605  
600

Existing Ground  
Top of Subgrade

101 L.F. 36" R.C.P. @ 2.09%

107 L.F. P-230

M.H.#20  
611.33

101 L.F. 36" R.C.P. @ 2.09%

107 L.F. P-230

615  
610  
605  
600

Existing Ground  
Top of Subgrade

101 L.F. 36" R.C.P. @ 2.09%

107 L.F. P-230

M.H.#20  
611.33

101 L.F. 36" R.C.P. @ 2.09%

107 L.F. P-230

615  
610  
605  
600

Existing Ground  
Top of Subgrade

101 L.F. 36" R.C.P. @ 2.09%

107 L.F. P-230

M.H.#20  
611.33

101 L.F. 36" R.C.P. @ 2.09%

107 L.F. P-230

615  
610  
605  
600

Existing Ground  
Top of Subgrade

101 L.F. 36" R.C.P. @ 2.09%

107 L.F. P-230

M.H.#20  
611.33

101 L.F. 36" R.C.P. @ 2.09%

107 L.F. P-230

615  
610  
605  
600

Existing Ground  
Top of Subgrade

101 L.F. 36" R.C.P. @ 2.09%

107 L.F. P-230

M.H.#20  
611.33

101 L.F. 36" R.C.P. @ 2.09%

107 L.F. P-230

615  
610  
605  
600

Existing Ground  
Top of Subgrade

101 L.F. 36" R.C.P. @ 2.09%

107 L.F. P-230

M.H.#20  
611.33

101 L.F. 36" R.C.P. @ 2.09%

107 L.F. P-230

615  
610  
605  
600

Existing Ground  
Top of Subgrade

101 L.F. 36" R.C.P