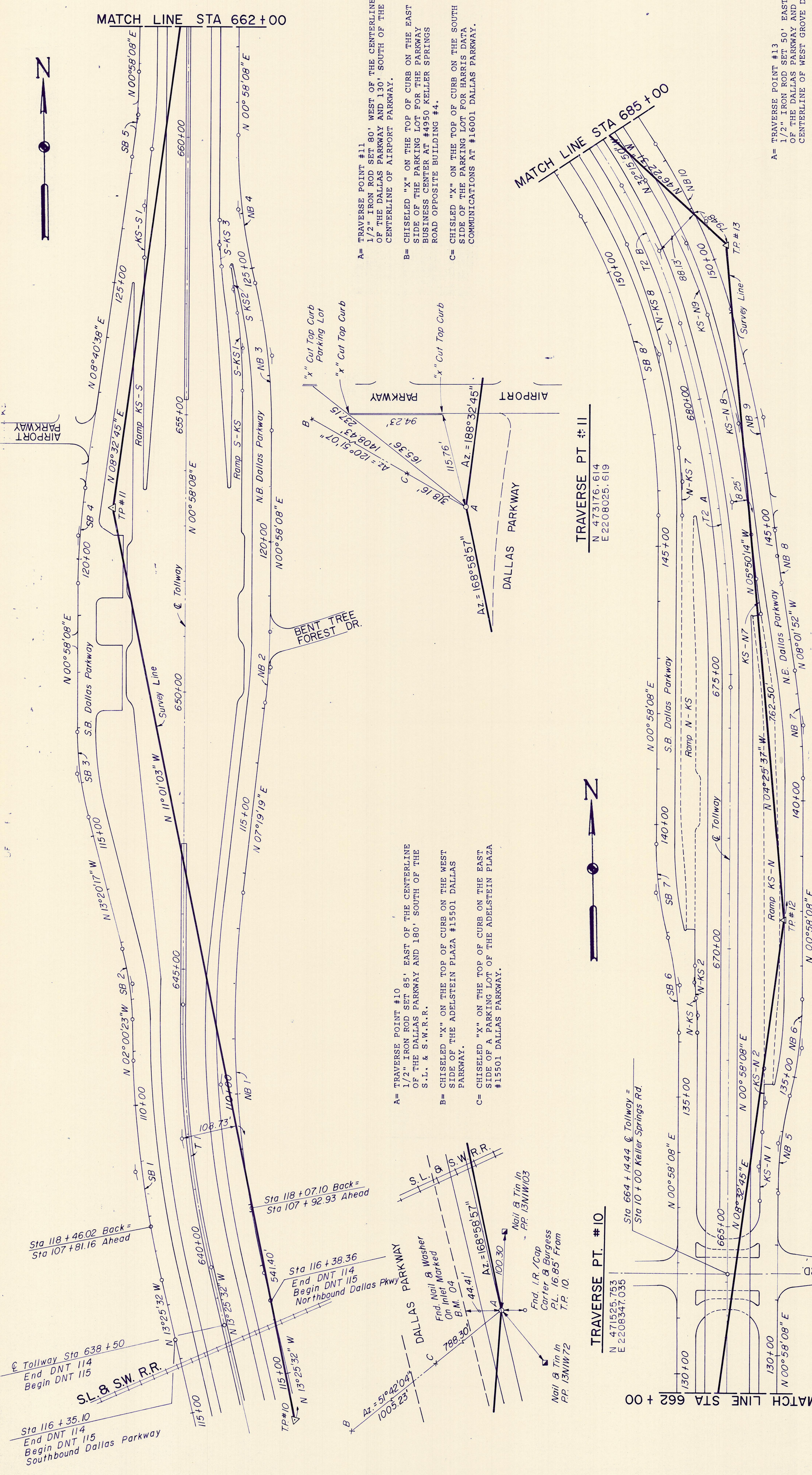


NOTES:
1. Refer to plan-profile sheets for additional alignment details.



A = TRAVERSE POINT #11
1/2" IRON ROD SET 80' WEST OF THE CENTERLINE OF THE DALLAS PARKWAY AND 130' SOUTH OF THE CENTERLINE OF AIRPORT PARKWAY.

B = CHISELED "X" ON THE TOP OF CURB ON THE EAST SIDE OF THE PARKING LOT FOR THE PARKWAY BUSINESS CENTER AT #4950 KELLER SPRINGS ROAD OPPOSITE BUILDING #4.

C = CHISELED "X" ON THE TOP OF CURB ON THE SOUTH SIDE OF THE PARKING LOT FOR HARRIS DATA COMMUNICATIONS AT #16001 DALLAS PARKWAY.

A = TRAVERSE POINT #10
1/2" IRON ROD SET 85' EAST OF THE CENTERLINE OF THE DALLAS PARKWAY AND 180' SOUTH OF THE S.L. & S.W.R.R.

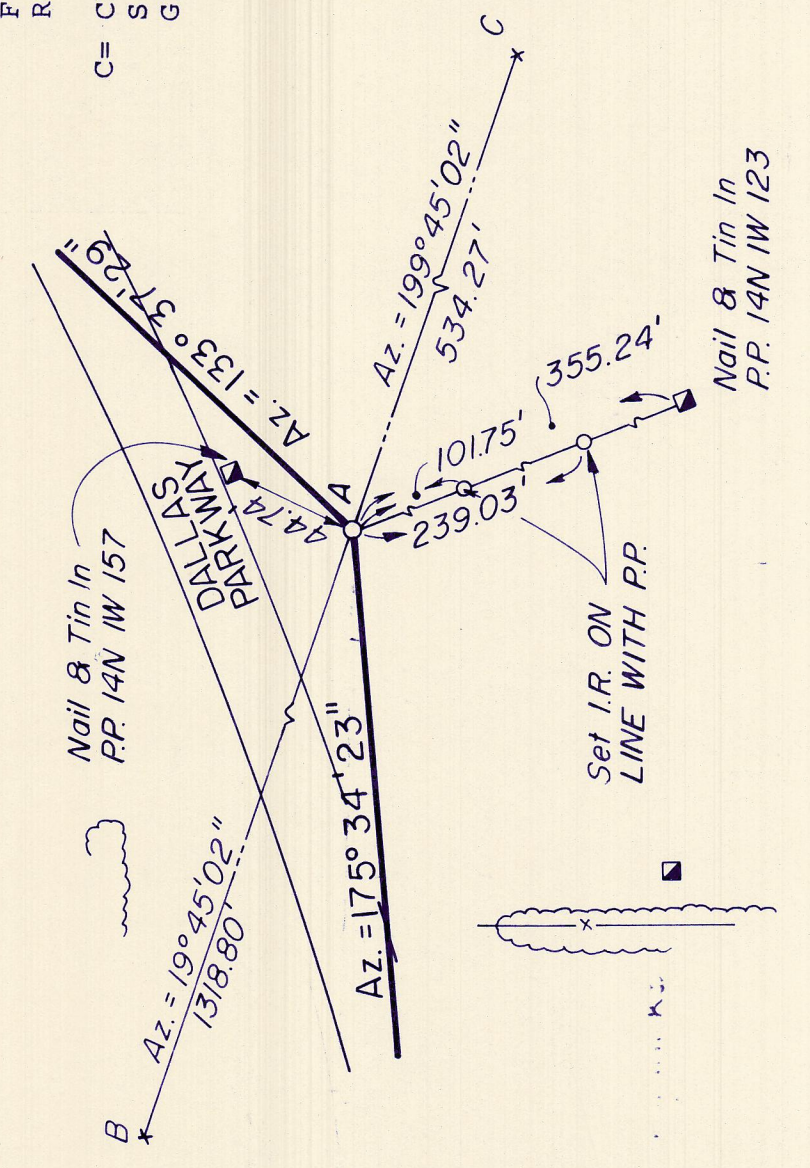
B = CHISELED "X" ON THE TOP OF CURB ON THE WEST SIDE OF THE ADELSTEIN PLAZA #15501 DALLAS PARKWAY.

C = CHISELED "X" ON THE TOP OF CURB ON THE EAST SIDE OF A PARKING LOT OF THE ADELSTEIN PLAZA #15501 DALLAS PARKWAY.

A = TRAVERSE POINT #12
1/2" IRON ROD SET 30' EAST OF THE CENTERLINE OF DALLAS PARKWAY AND 330' SOUTH OF THE CENTERLINE OF KELLER SPRINGS ROAD.

B = CHISELED "X" ON THE TOP OF CURB IN THE S.W. CORNER OF A PARKING LOT FOR THE HUMBLE EXPLORATION COMPANY, INC. AT #16200 DALLAS PARKWAY.

C = CHISELED "X" ON THE TOP OF CURB ON THE SOUTH SIDE OF KELLER SPRINGS ROAD AND WEST OF THE DALLAS PARKWAY 85' WEST OF A FIRE HYDRANT.



NO.	REVISION	BY	DATE

TEXAS TURNPIKE AUTHORITY
DALLAS NORTH TOLLWAY

GEOMETRIC CONTROLS & TRAVERSE TIES

STA 638 + 50 TO STA 685 + 00

Gibbs & Hill, Inc.
ENGINEERS DESIGNERS CONSTRUCTORS DALLAS

SCALE 1"=100'

CHECKED: AELT DATE: 7/18/84
DRAWN: AELT DATE: 7/18/84
DESIGNED: DWG DATE: 6/29/84

CONTRACT NO. DNT-115 SHEET CI OF C3

SECTION VII

TRAVERSE PT. # 13
N 476114.367
E 2208189.319

TRAVERSE PT. # 12
N 474894.467
E 2208283.761