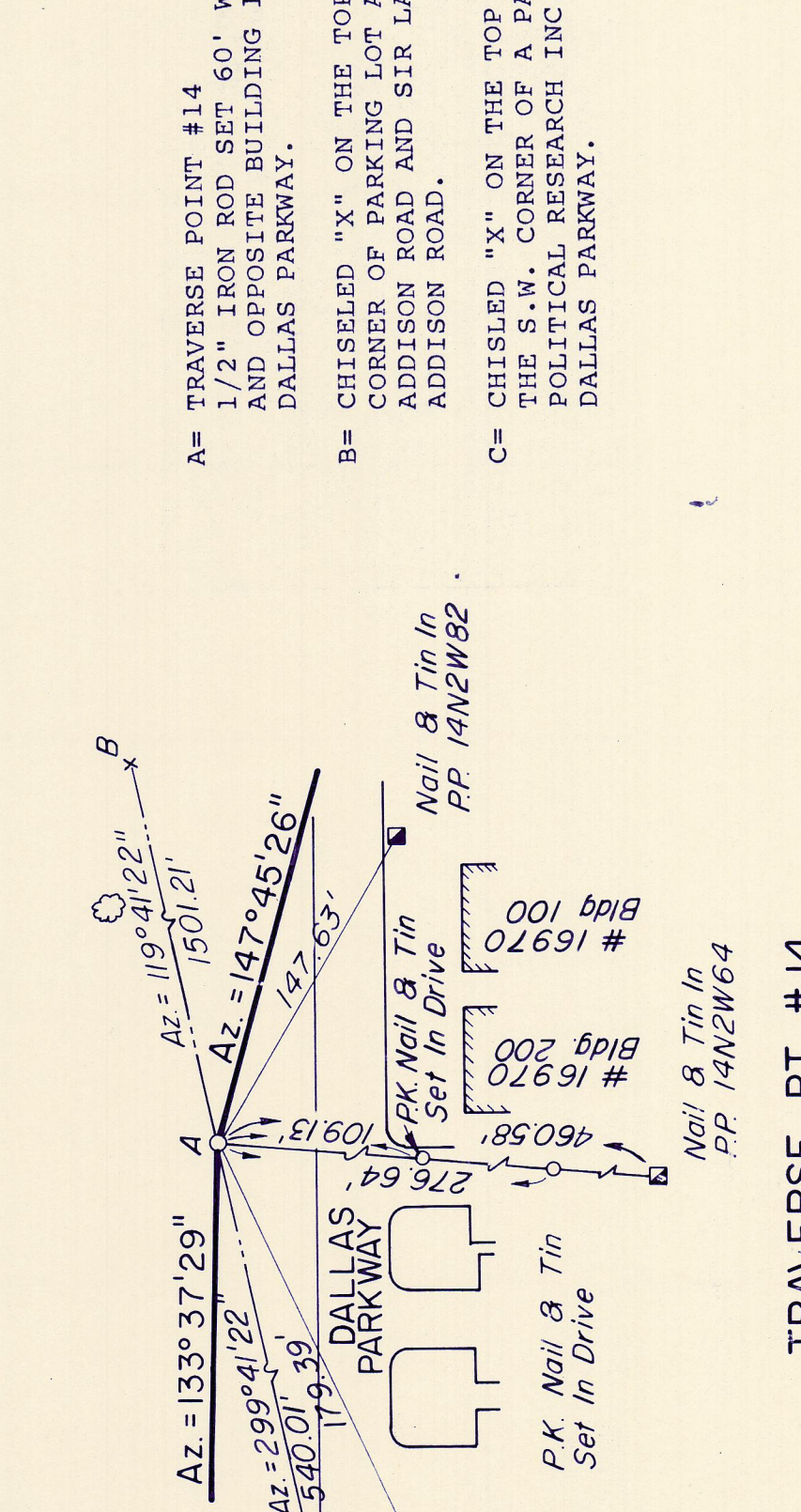
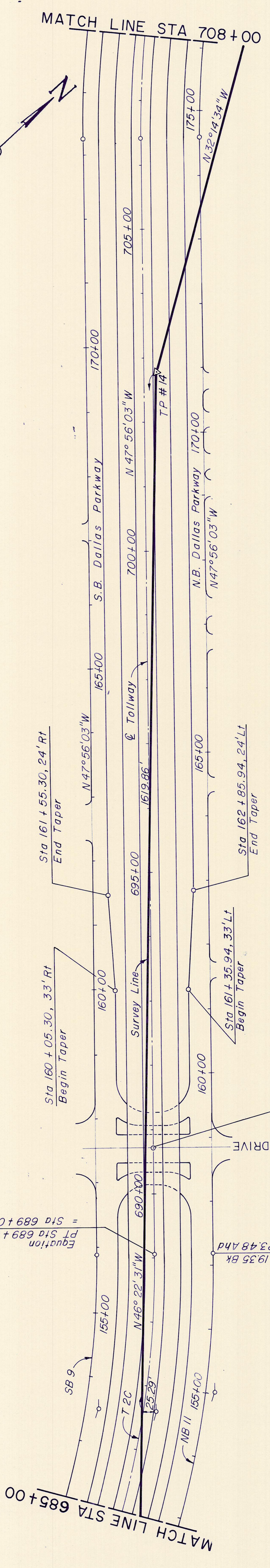
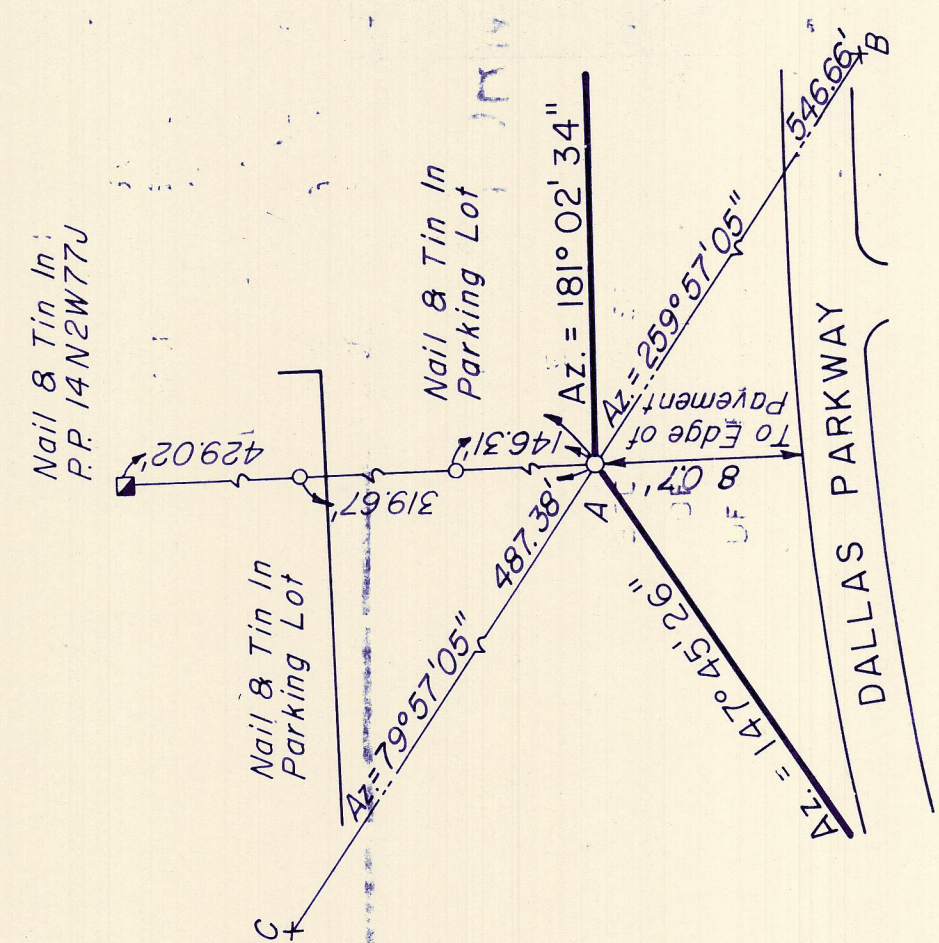
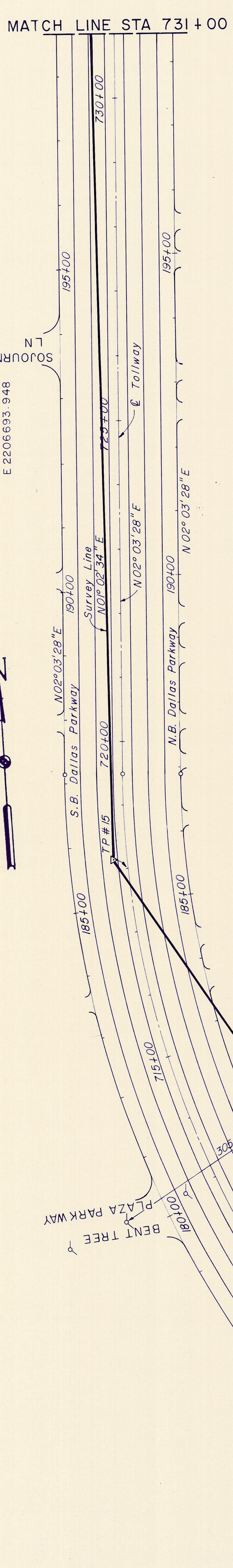


NOTES:
1. Refer to plan-profile sheets for additional alignment details.



TRAVERSE PT. #14
N 475.39.623
E 2206693.948

- A= TRAVERSE POINT #14
1/2" IRON ROD SET 60' WEST OF DALLAS PARKWAY
AND OPPOSITE BUILDING 100 & 200 OF #16970
DALLAS PARKWAY.
- B= CHISELED "X" ON THE TOP OF CURB ON THE S.E.
CORNER OF PARKING LOT AT THE CORNER OF
ADDISON ROAD AND SIR LANCELOT AT #16775
ADDISON ROAD.
- C= CHISELED "X" ON THE TOP OF CURB 10' EAST OF
THE S.W. CORNER OF A PARKING LOT FOR THE
POLITICAL RESEARCH INC. BUILDING AT #16850
DALLAS PARKWAY.



TRAVERSE PT. #15
N 478799.664
E 2205899.146

- A= TRAVERSE POINT #15
1/2" IRON ROD 100' WEST OF THE CENTERLINE OF
THE DALLAS PARKWAY AND 800' SOUTH OF SOJOURN
ROAD.
- B= CHISELED "X" ON THE TOP OF CURB ON THE EAST
SIDE OF KNOLL TRAIL DRIVE 10' SOUTH OF A
FIRE HYDRANT AND ACROSS FROM #17070 KNOLL
TRAIL DRIVE.
- C= CHISELED "X" ON THE TOP OF CURB ON THE WEST. A.
SIDE OF ADDISON ROAD AT #16835 ADDISON ROAD.

NO.	REVISION	BY	DATE
TEXAS TURNPIKE AUTHORITY DALLAS NORTH TOLLWAY			
GEOMETRIC CONTROLS & TRAVERSE TIES STA 685 + 00 TO STA 731 + 00			
Gibbs & Hill, Inc. ENGINEERS DESIGNERS CONSTRUCTORS DALLAS			SECTION VII
DRAWN VER CHECKED REF	DATE 7/3/84 DATE 7/19/84	DESIGNED DW SCALE 1"=100'	DATE 6/29/84
CONTRACT NO. DNT-115 SHEET C2 OF C3			