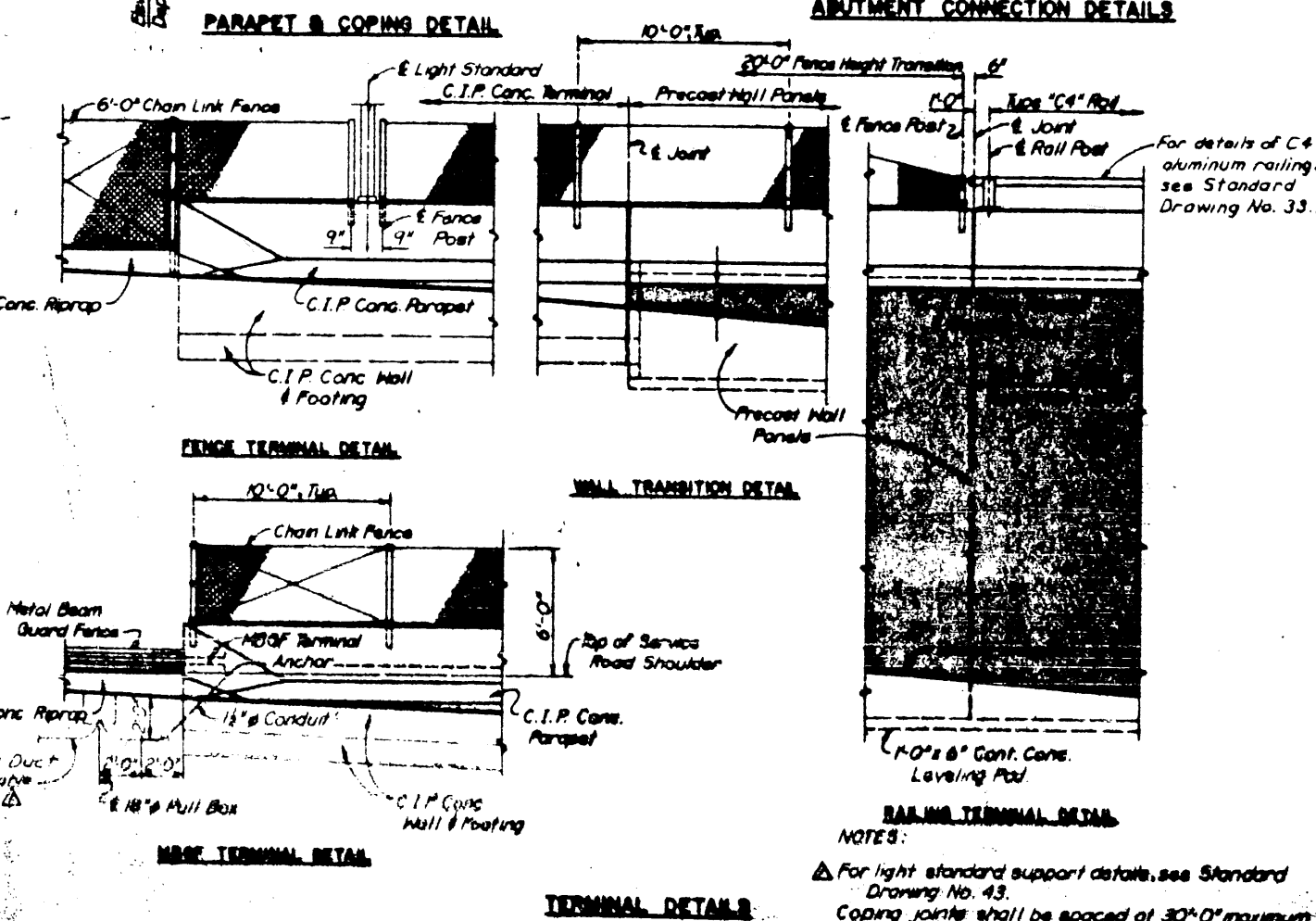
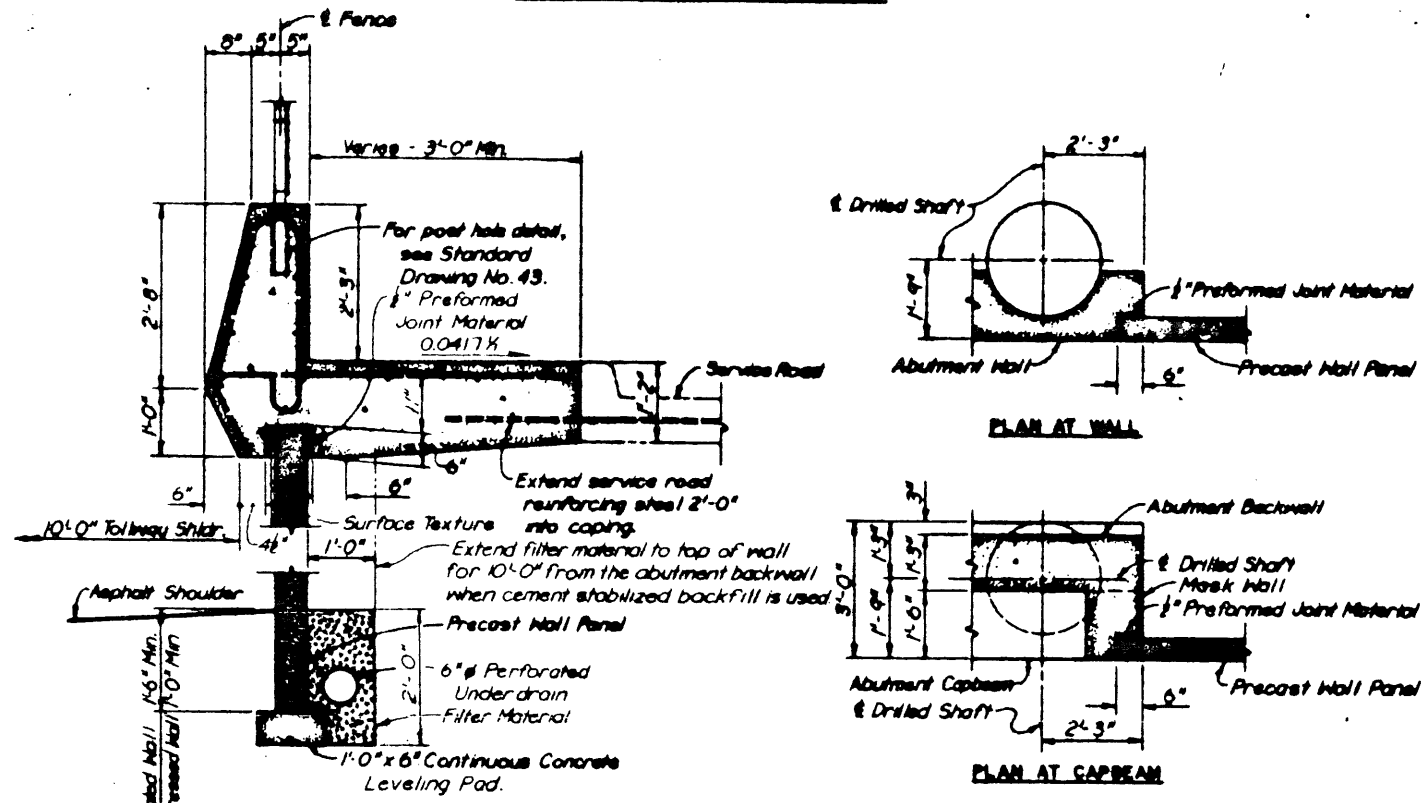
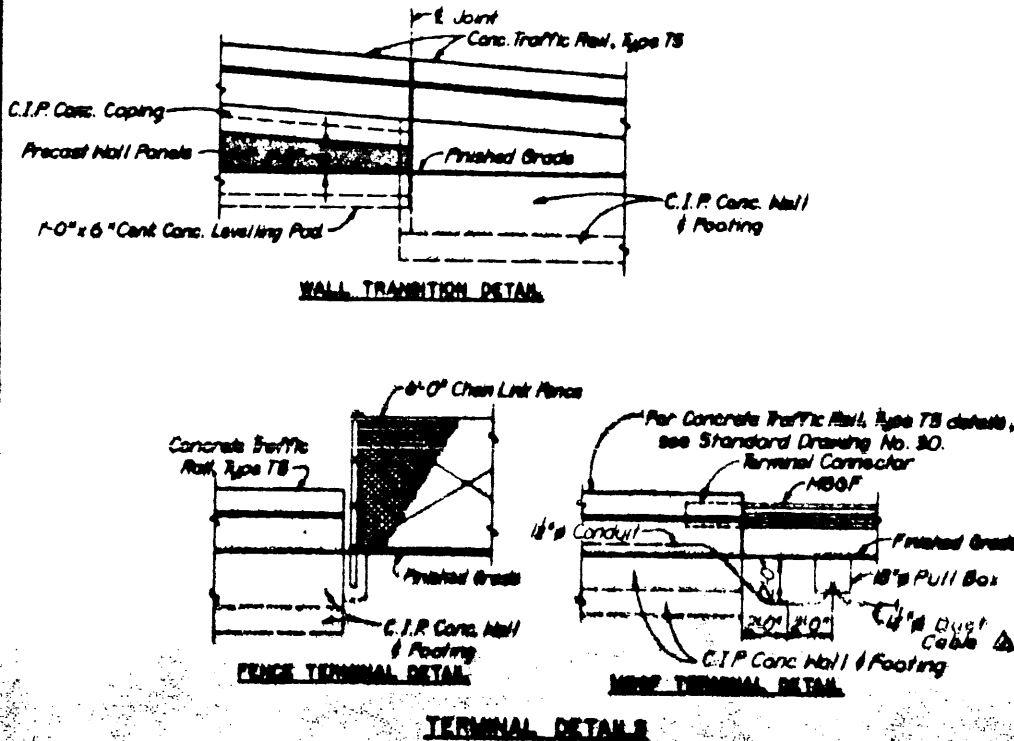
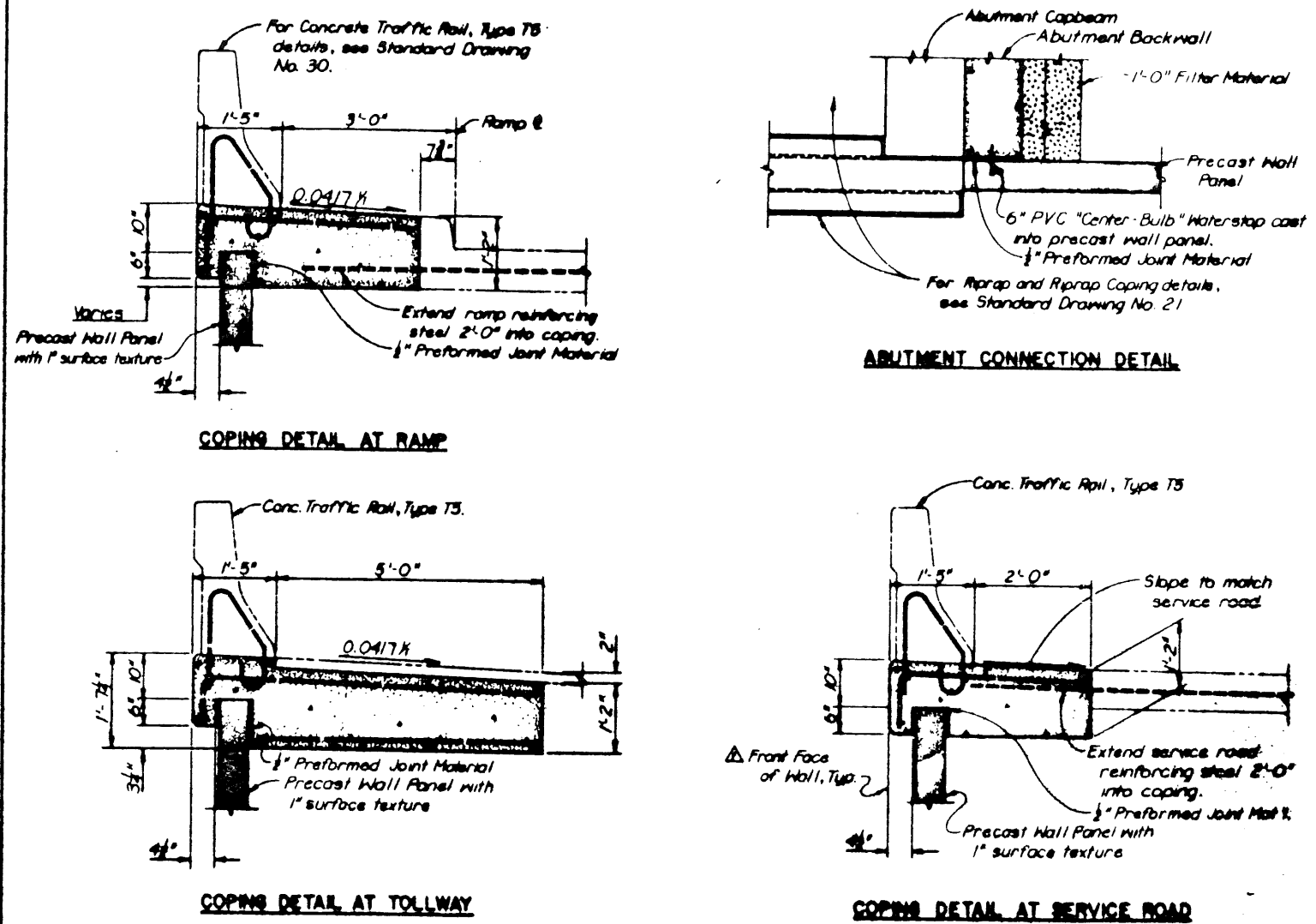


DEPRESSED ROADWAY SECTION



NOTES:
 For light standard support details, see Standard Drawing No. 43.
 Coping joints shall be spaced at 30'-0" maximum centers.

ELEVATED ROADWAY SECTION



NOTES:
 For light standard support details, see Standard Drawing No. 41.
 For base of wall detail, see "Depressed Roadway Section" at left.
 Coping joints shall be spaced at 30'-0" maximum centers.

Misc.	57M 1-13-88
TEXAS TURNPIKE AUTHORITY	
DALLAS NORTH TOLLWAY	
PRECAST RETAINING WALL DETAILS	
HNFB	SECTION
STANDARD DRAWING	