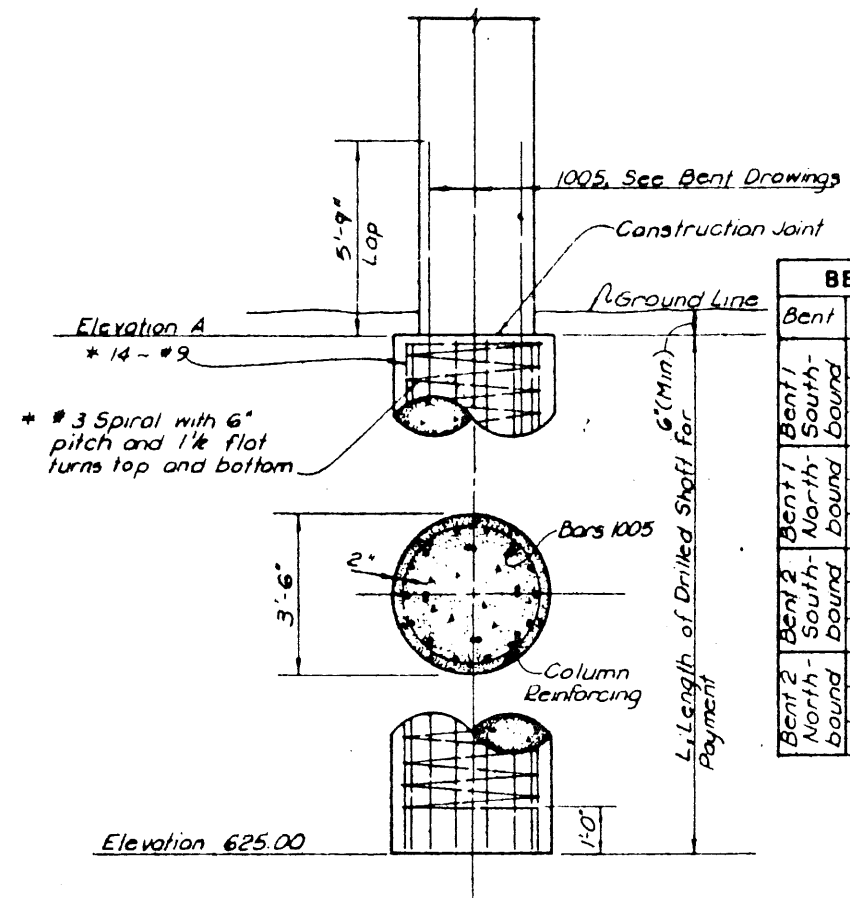


BEARING SEAT ELEVATIONS

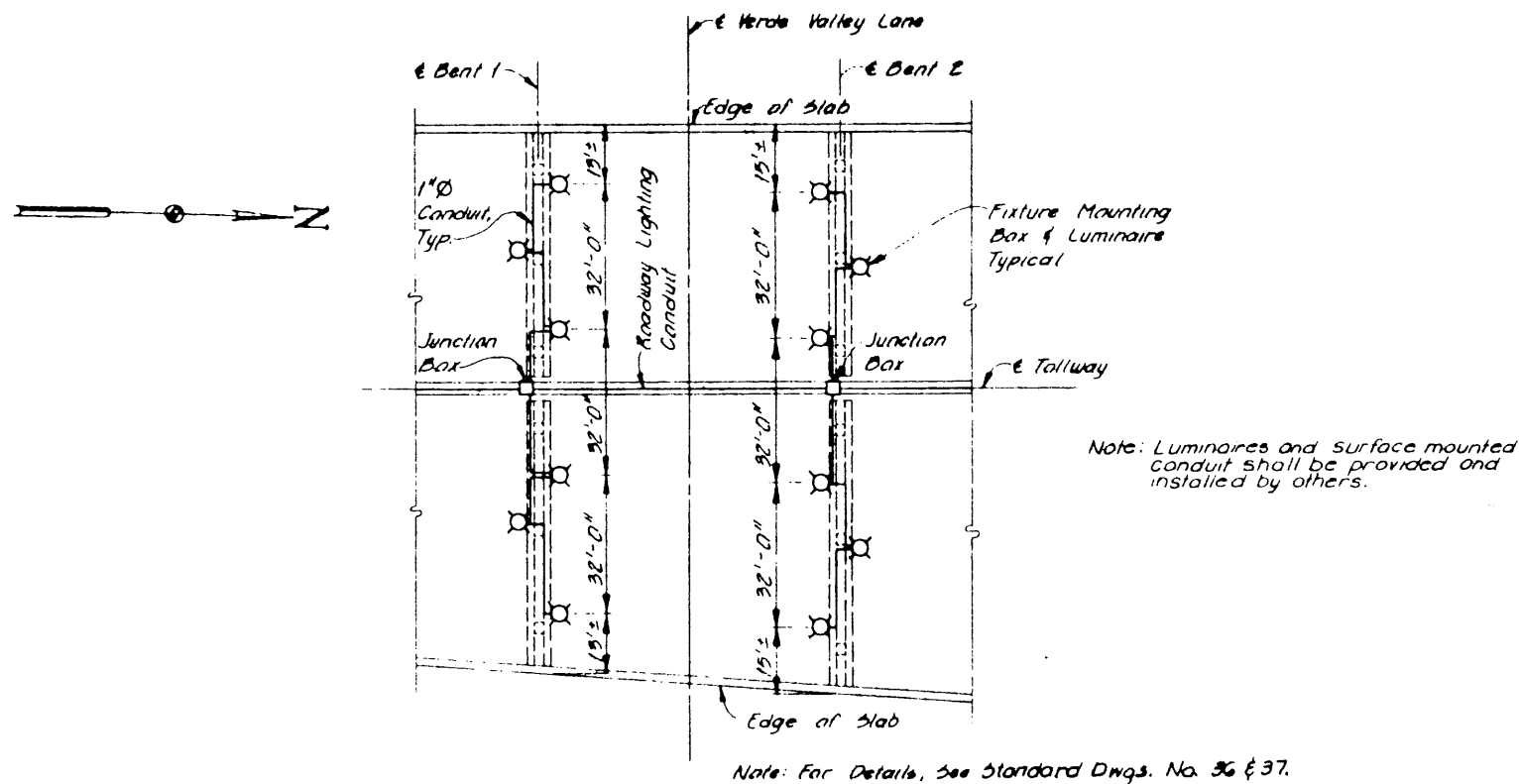
SOUTH ABUTMENT (FWD)	BEAM 1	BEAM 2	BEAM 3	BEAM 4	BEAM 5	BEAM 6	BEAM 7	BEAM 8
	650.00	650.12	650.23	650.34	650.45	650.57	650.68	650.79
	BEAM 9	BEAM 10	BEAM 11	BEAM 12	BEAM 13	BEAM 14	BEAM 15	BEAM 16
	650.79	650.67	650.55	650.44	650.32	650.20	650.13	650.07
	BEAM 17							
	650.00							
BENT 1 (BK)	BEAM 1	BEAM 2	BEAM 3	BEAM 4	BEAM 5	BEAM 6	BEAM 7	BEAM 8
	650.58	650.69	650.81	650.92	651.03	651.14	651.26	651.37
	(FWD)	650.60	650.71	650.83	650.94	651.05	651.16	651.28
	BEAM 9	BEAM 10	BEAM 11	BEAM 12	BEAM 13	BEAM 14	BEAM 15	BEAM 16
	651.37	651.25	651.13	651.01	650.90	650.78	650.68	650.59
	(FWD)	651.39	651.27	651.15	651.03	650.92	650.80	650.70
	BEAM 17							
	650.50							
	(FWD)	650.51						
BENT 2 (BK)	BEAM 1	BEAM 2	BEAM 3	BEAM 4	BEAM 5	BEAM 6	BEAM 7	BEAM 8
	650.80	650.91	651.02	651.14	651.25	651.36	651.47	651.59
	(FWD)	650.80	650.92	651.03	651.14	651.25	651.37	651.48
	BEAM 9	BEAM 10	BEAM 11	BEAM 12	BEAM 13	BEAM 14	BEAM 15	BEAM 16
	651.59	651.47	651.35	651.23	651.11	650.99	650.88	650.76
	(FWD)	651.59	651.47	651.35	651.24	651.12	651.00	650.91
	BEAM 17	BEAM 18						
	650.64	650.64						
	(FWD)	650.73						
NORTH ABUTMENT (BK)	BEAM 1	BEAM 2	BEAM 3	BEAM 4	BEAM 5	BEAM 6	BEAM 7	BEAM 8
	650.69	650.81	650.92	651.03	651.14	651.26	651.37	651.48
	BEAM 9	BEAM 10	BEAM 11	BEAM 12	BEAM 13	BEAM 14	BEAM 15	BEAM 16
	651.48	651.36	651.25	651.13	651.01	650.89	650.78	650.67
	BEAM 17	BEAM 18						
	650.56	650.45						



BENT DRILLED SHAFT DATA			
Bent	Location	Elevation A	Length of Shaft, L
Bent 1 South-bound	Lt. Column	632.88	7.88
	Center Col	633.19	8.19
	Rt. Column	633.51	8.51
Bent 1 North-bound	Lt. Column	633.50	8.50
	Center Col	633.15	8.15
	Rt. Column	632.85	7.85
Bent 2 South-bound	Lt. Column	633.09	8.09
	Center Col	633.40	8.40
	Rt. Column	633.72	8.72
Bent 2 North-bound	Lt. Column	633.70	8.70
	Center Col	633.32	8.32
	Rt. Column	632.95	7.95

* Notes: The cost of reinforcing steel to be included in the price bid for drilled shafts. Bottom of shaft elevation is approximate and should be varied as required to provide a 5'-0" minimum penetration into unweathered rock.

BENT DRILLED SHAFT
Scale: 1/2" = 1'-0"



UNDERBRIDGE LIGHTING PLAN

NO.	REVISION	BY	DATE
TEXAS TURNPIKE AUTHORITY DALLAS NORTH TOLLWAY			
VERDE VALLEY LANE OVERPASS BEARING SEAT ELEVATIONS AND BENT DRILLED SHAFT DETAILS			
Turner Collier & Braden Inc. Consulting Engineers			SECTION VI
DRAWN RGD	DATE 4-83	DESIGNED TJR	DATE 3-83
CHECKED JRA	DATE 5-83	SCALE AS NOTED	
CONTRACT NO. DNT-114 SHEET S-11 OF S-82			