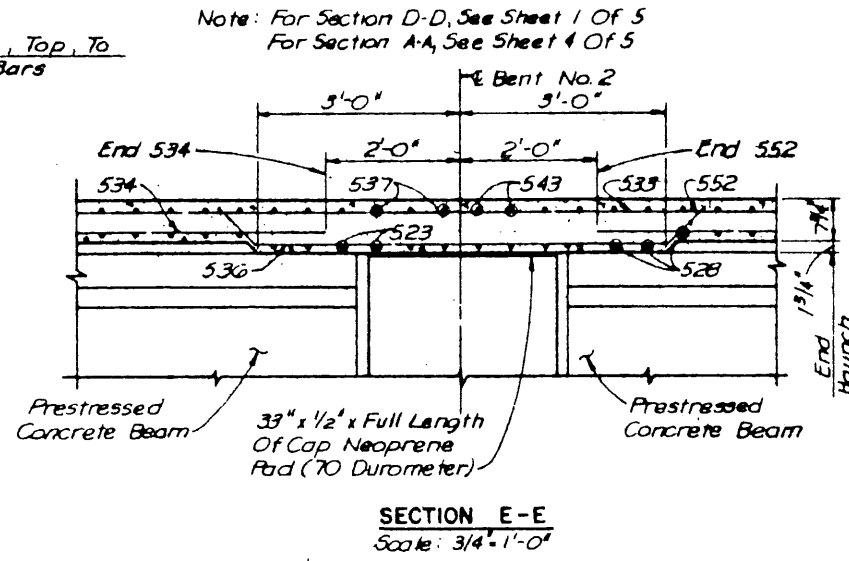


Note: Interior Diaphragm Spacing Varies, See Sheet No. S-12.

PLAN
Scale: 1/8" = 1'-0"

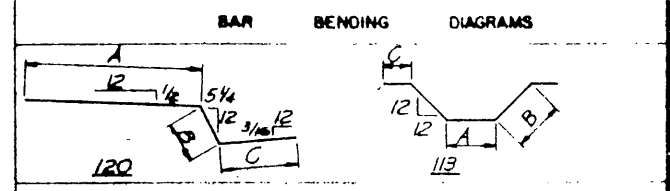
*See Reinforcement Bar Schedule, Sheet 1 Of 5
*See Reinforcement Bar Schedule, Sheet 3 Of 5



Note: For Section D-D, See Sheet 1 Of 5
For Section A-A, See Sheet 4 Of 5

SECTION E-E
Scale: 3/4" = 1'-0"

MARK	NO.	LENGTH	TYPE	DIMENSIONS				WEIGHT
				A	B	C	D or R	
519	134	38'-8"	Str					5404
520	45	24'-7"	Str					1154
521	45	26'-2"	Str					1228
522	44	27'-8"	Str					1270
523	134	51'-8"	Str					7221
524	134	45'-5"	Str					6348
525	45	20'-10"	Str					978
526	45	22'-4"	Str					1048
527	44	23'-11"	Str					1098
528	268	6'-3"	120	3'-11"	0'-10"	1'-6"		1747
529	268	4'-1"	Str					1141
530	28	38'-4"	Str					1119
532	134	24'-8"	Str					3448
533	290	46'-3"	Str					13989
534	128	40'-0"	Str					5340
535	Omitted							
536	128	7'-2"	113	5'-8"	0'-9"	0'-0"		957
537	134	54'-8"	Str					7040
								Total 61130



ITEM NO.	DESCRIPTION	UNIT	QUANTITY
425	Prest. Conc. Beams (Type C)	L.F.	1086.91
422	Reinforced Concrete Slab	S.F.	8082
#440	Reinforcing Steel	Lb.	61130
442	Structural Steel (HYC)	Lb.	5168
450	Concrete Traffic Rail (Type T5)	L.F.	134.2
514	Concrete Traffic Barrier	L.F.	67.0
#421	Class C Concrete (Slab)	CY.	206.3

For Contractor's Information Only.

- NOTES:
- Concrete To Be Class C - Design Strength $f_c = 1200$ psi. Steel Reinforcement To Be ASTM A615 Grade 60 Unless Noted
 - For Concrete Traffic Rail (Type T5) Details, See Standard Drawing No. 30.
 - For Concrete Traffic Barrier Details, See Standard Drawing No. 31 & 32.
 - For Slab Elevations And Dead Load Deflections, See Sheet No. S-20
 - Dimensions Relating To Reinforcing Steel Are Outside To Outside Dimensions Of Bars

NO.	REVISION	BY	DATE
TEXAS TURNPIKE AUTHORITY			
DALLAS NORTH TOLLWAY			
VERDE VALLEY LANE OVERPASS			
SLAB DETAILS-SPAN 2			
Turner Collie & Braden Inc. <small>(Consulting Engineers)</small>			SECTION VI
DESIGNED RGD	DATE 3-83	APPROVED FRW	DATE 3-83
CHECKED FRW	DATE 4-83	SCALE AS NOTED	
CONTRACT NO. DNT-114 SHEET S-15 OF S-82			