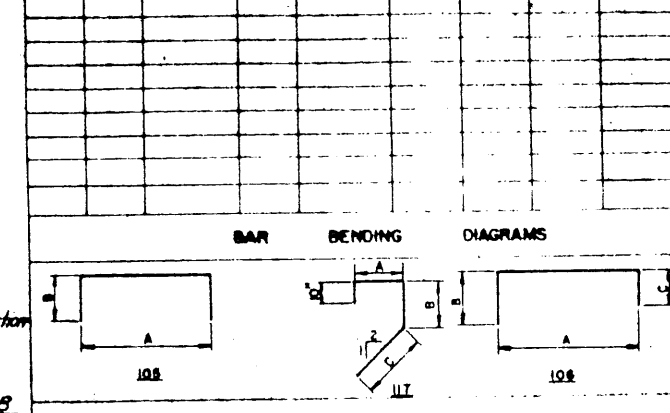


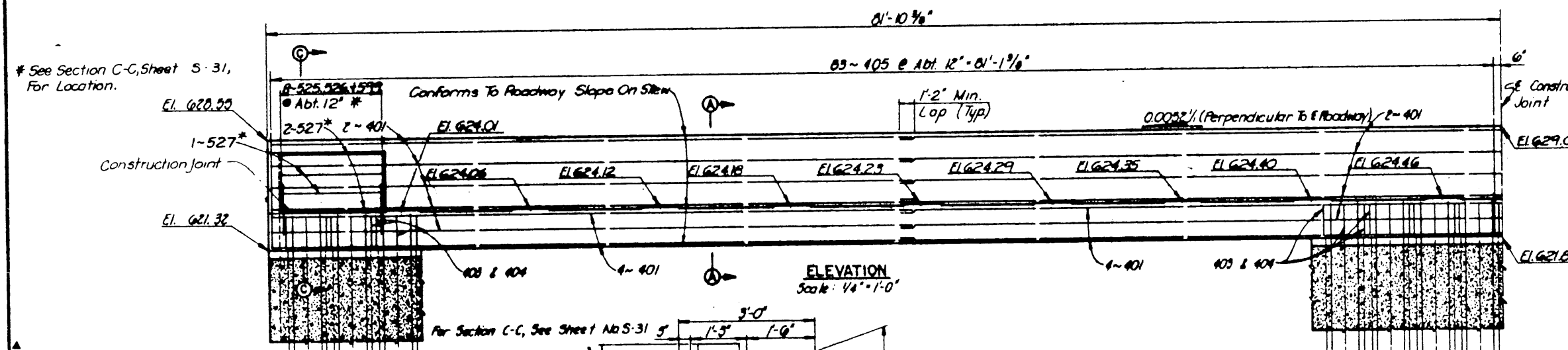
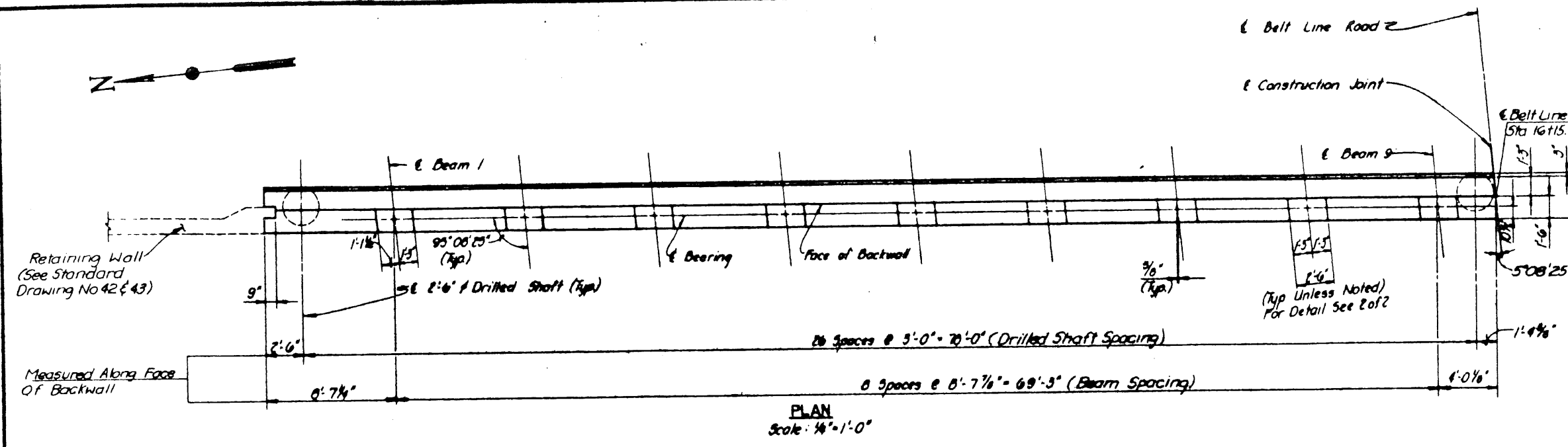
MARK	NO.	LENGTH	TYPE	DIMENSIONS				WEIGHT
				A	B	C	D or R	
401	36	44'-6"	Str					1070
402	36	45'-2"	Str					1086
403	174	5'-4"	105					620
404	174	5'-6"	117	2'-0"	1'-8"			639
405	170	15'-11"	105	0'-11"	7'-6"			1893
								Total 5308

501	8	3'-6"	Str					29
502	8	5'-0"	Str					42
503	4	4'-0"	Str					17
525	28	5'-5"	105	2'-5"	1'-6"			158
526	28	7'-7"	106	2'-5"	1'-6"	3'-8"		221
527	6	6'-5"	Str					40
528	6	18'-8"	Str					117
579	28	2'-6"	Str					78
								Total 697
								Total 6005

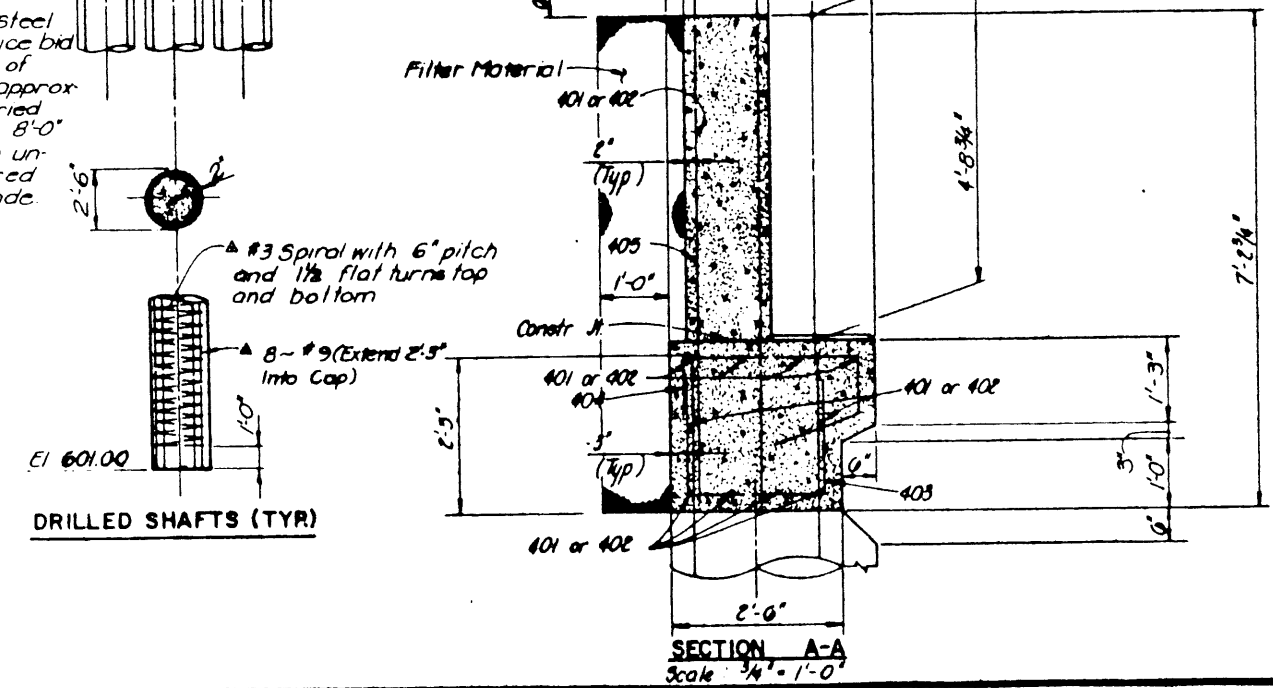


ITEM NO.	DESCRIPTION	UNIT	QUANTITY
416	Drilled Shaft (30")	L.F.	1184
421	Class "C" Concrete (Abutment)	C.Y.	85
423	Retaining Wall (Fascia Wall)	S.F.	2352
440	Reinforcing Steel	Lb.	6005
556	Filter Material (Type D)	C.Y.	55
900	Filter Well (12")	L.F.	349

NOTE:
Armor Joint at Abutment is included in the Slab Details Drawings, Item No. 442 Quantity.



Note:
The cost of reinforcing steel to be included in the price bid for drilled shaft. Bottom of drilled shaft elevation is approximate and should be varied as required to provide 8'-0" minimum penetration into un-weathered rock measured from top of finished grade.



- NOTES:**
- All concrete shall be Class "C", Design $f_c = 4200$ p.s.i. Chamfer all exposed corners $3/4"$ unless otherwise noted.
 - All reinforcing steel shall be ASTM A615 Grade 60.
 - Dimensions relating to reinforcing steel are to outside dimension of bar, with radii shown to the inside of bar.
 - For Drilled Shaft and Fascia Wall Details, See Sheet No. S-35.
 - Elevations shown, other than the Bearing Seat Elevations, are given at front face of Abutment Backwall.
 - For Under Bridge Lighting Conduit Details, see Standard Drawing No. 36 and Underbridge Lighting Plan on Sheet 4 of 5.

NO.	REVISION	BY	DATE
TEXAS TURNPIKE AUTHORITY			
DALLAS NORTH TOLLWAY			
BELT LINE ROAD UNDERPASS			
EAST ABUTMENT DETAILS			
Turner Collier Braden Inc.			SECTION VI
DESIGNED BY	DRD	DATE	4-83
CHECKED BY	FRW	DATE	4-83
CONTRACT NO. DNT-14			SHEET S-25 OF S-82

004093