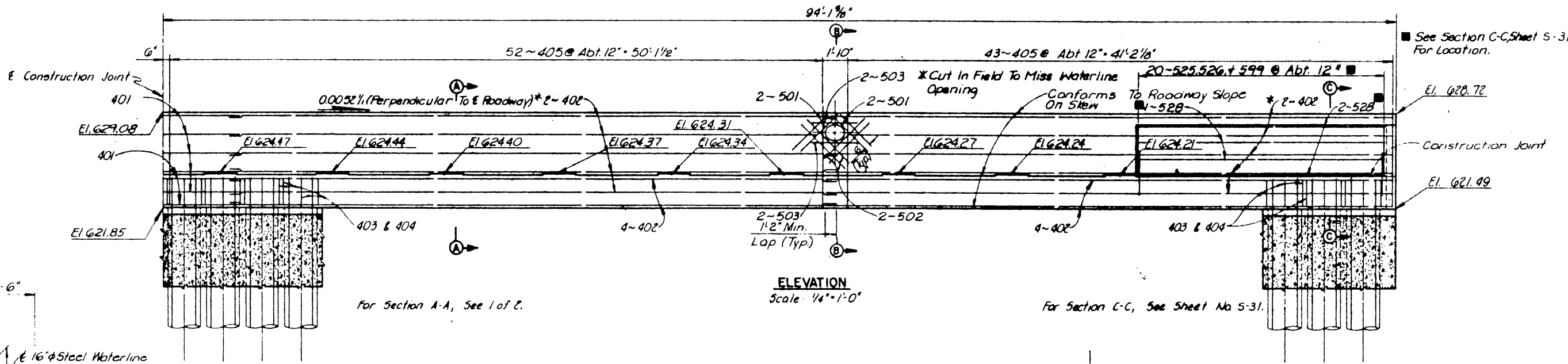
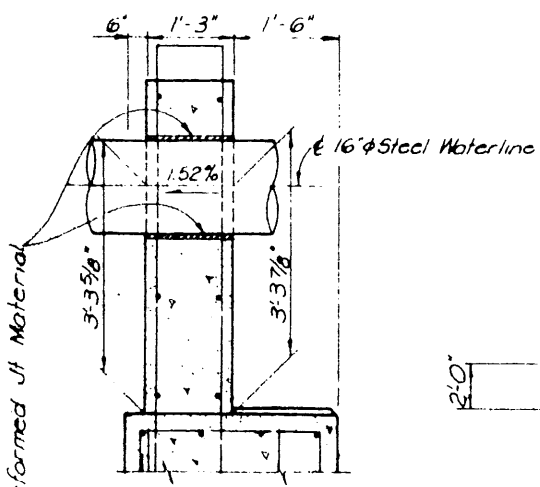


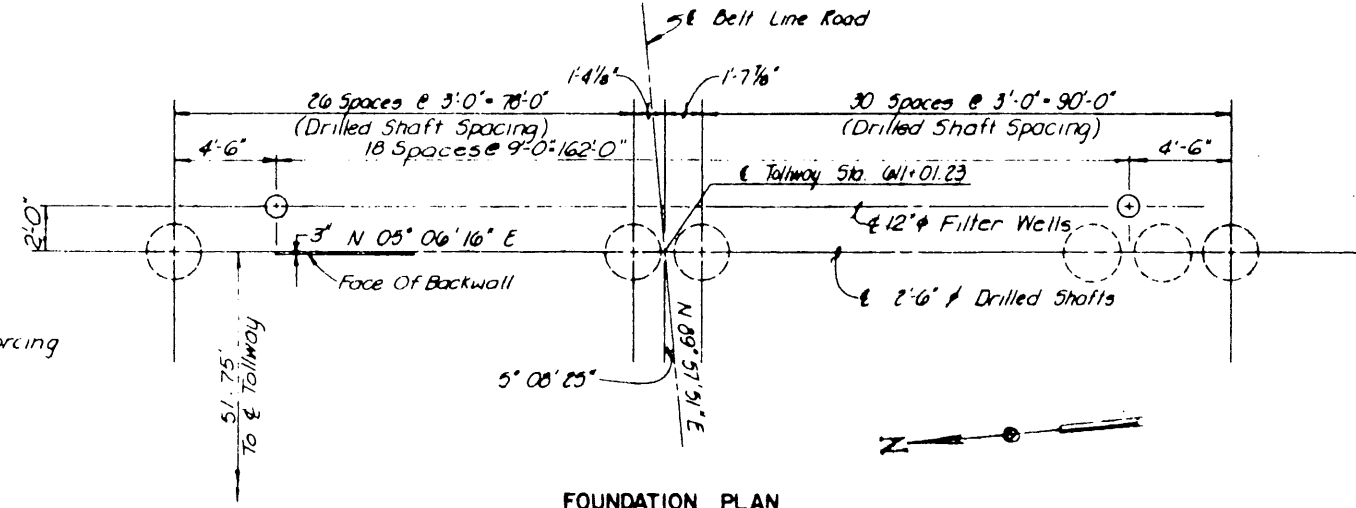
PLAN
Scale: 1/4" = 1'-0"



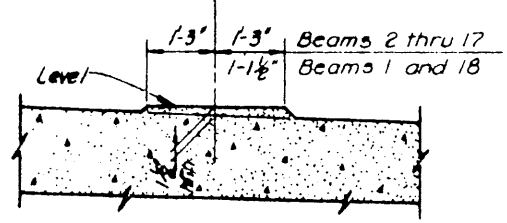
ELEVATION
Scale: 1/4" = 1'-0"



SECTION B-B
Scale: 3/4" = 1'-0"



FOUNDATION PLAN
NTS



BEARING SEAT DETAIL
Scale: 3/4" = 1'-0"

Note: Built-up portions of bearing seat shall be cast integrally with cap or constructed as follows: The area under the built-up portion is to be prepared in accordance with specification requirements for construction joints. The pedestal shall then be placed using an approved pre-packaged, non-shrink, impact resistant grout containing non-metallic fibers, similar to *Sat* "Impact Resistant Grout". The grout shall be mixed and applied in accordance with the manufacturer's recommendations.

Notes
1 See East Abutment Details, 1 of 2 for Notes, Estimated Quantities and Details not shown

NO.	REVISION	BY	DATE
TEXAS TURNPIKE AUTHORITY DALLAS NORTH TOLLWAY BELT LINE ROAD UNDERPASS EAST ABUTMENT DETAILS			
Turner Collier & Braden Inc. <small>(Consulting Engineers)</small>			SECTION VII
DESIGNED BY	DATE	DESIGNED BY	DATE
FRW	4-83	FRW	3-83
CHECKED BY	DATE	CHECKED BY	DATE
FRW	4-83	AS NOTED	
CONTRACT NO. DNT-114 SHEET S-26 OF S-82			