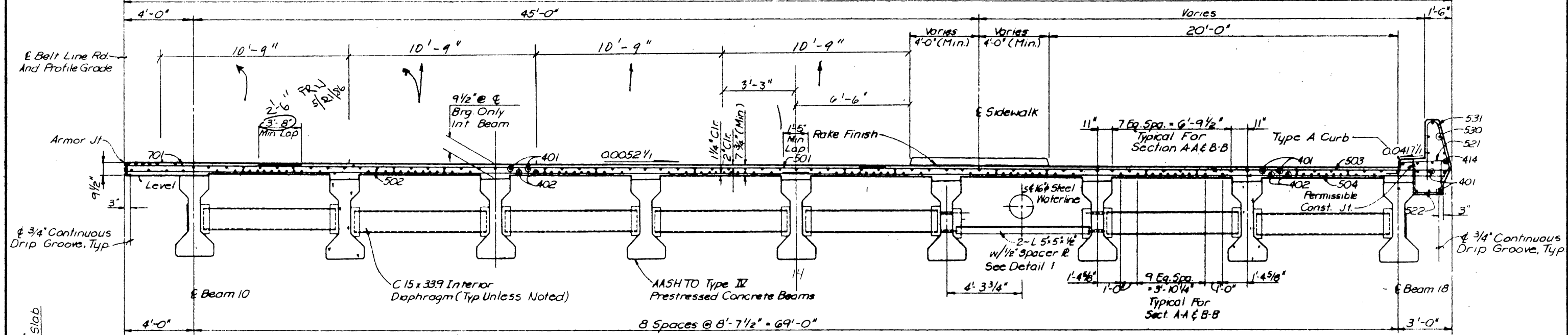
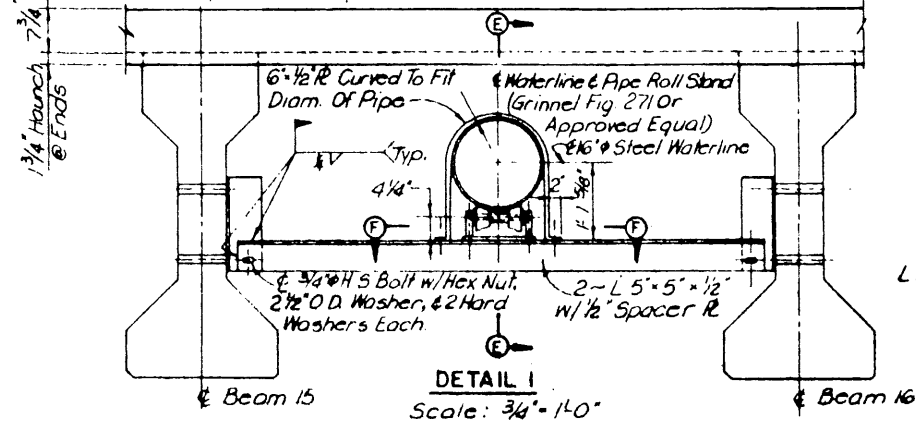


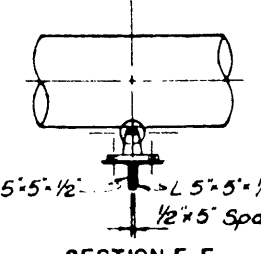
SECTION A-A
Scale: 3/8" = 1'-0"
76'-0"



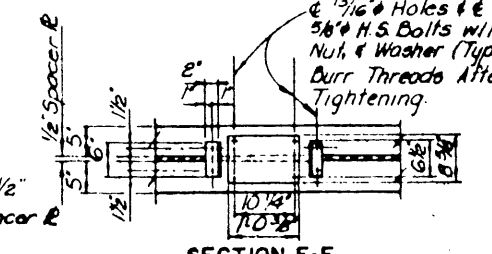
SECTION B-B
Scale: 3/8" = 1'-0"
76'-0"



DETAIL I
Scale: 3/4" = 1'-0"



SECTION E-E
Scale: 3/4" = 1'-0"



SECTION F-F
Scale: 3/4" = 1'-0"

GENERAL NOTES

1. Concrete To Be Class C. Design Strength $f_c = 1200$ psi. Steel Reinforcement To Be ASTM A615, Grade 60.
2. For Aluminum Combination Rail (Type C4) Details, See Standard Drawing No. 33.
3. For Parapet Details See Section A-A, Sheet 4 of 5.
4. For Slab Elevations And Dead Load Deflections, See Sheet No. S-33.
5. For Armor Jt. Details, See Standard Dwg. 28.
6. For Thickened Slab Details, See Sheet 4 of 5.
7. For Type A Curb Details, See Standard Dwg. 11.
8. For Sidewalk Details And Dimensions, See Sheet No. R-37.
9. Pipe Roll Stands And Appurtenances Shall Be Paid For Under Structural Steel Pipe Roll Stands And Straps.

NO.	REVISION	BY	DATE
TEXAS TURNPIKE AUTHORITY DALLAS NORTH TOLLWAY			
BELT LINE ROAD UNDERPASS SLAB DETAILS- SECTION A-A AND SECTION B-B			
TurnerCollins & Bradburn Consulting Engineers			SECTION VI
Drawn	RGD	Date	5-83
Checked	FRW	Date	6-83
Approved	L.O.L.	Date	5-83
NOTED			
CONTRACT NO. DNT-114 SHEET S-30 OF S-82			