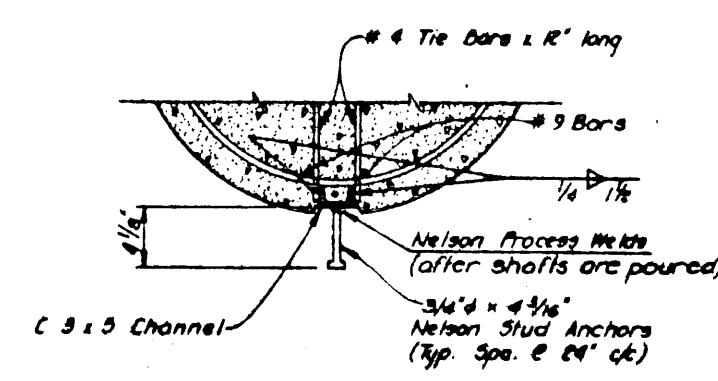
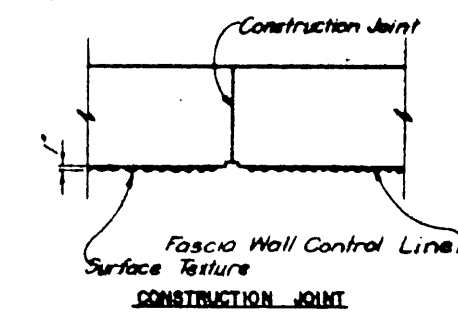


**PLAN**  
Scale: 1/8" = 1'-0"

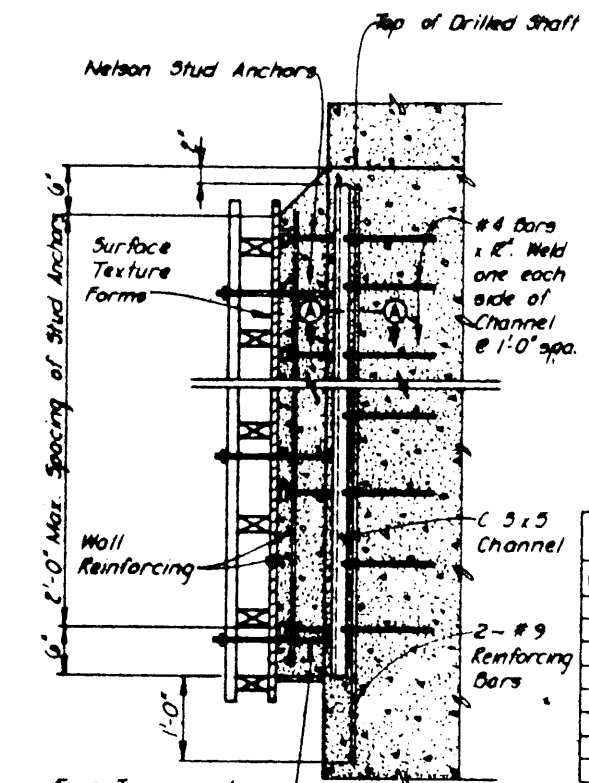
\* Can be varied to accommodate drilled shaft vertical alignment construction tolerances, as per Specifications.



**SECTION A-A**  
N.T.S.



**VERTICAL GROOVE DETAILS**  
N.T.S.

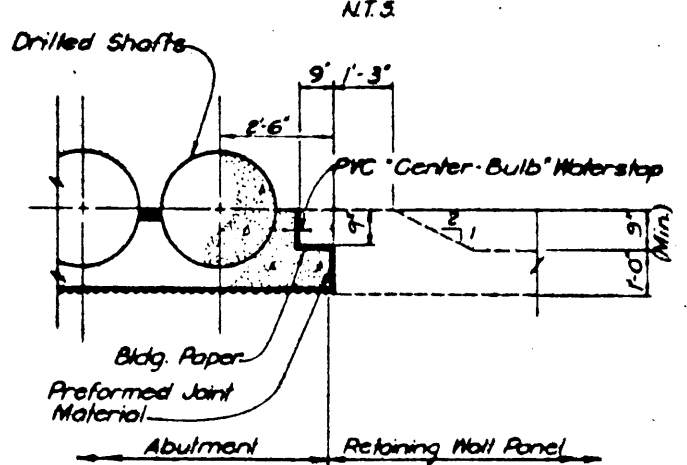


**VERTICAL SECTION**  
N.T.S.

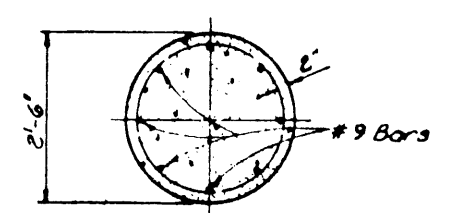
**NOTE:**  
Forming details shown are diagrammatic only, Contractor shall select type of Form ties, etc., subject to approval of Engineer.

ESTIMATED QUANTITY SUMMARY*			
ITEM NO	DESCRIPTION	UNIT	QUANTITY
#421	Class C Concrete (Fascia Wall)	CY	0.10
#430	Reinforcing Steel (Fascia Wall)	Lb	2.67
556	Pipe Underdrains (4 in Non Perf)	LF	453

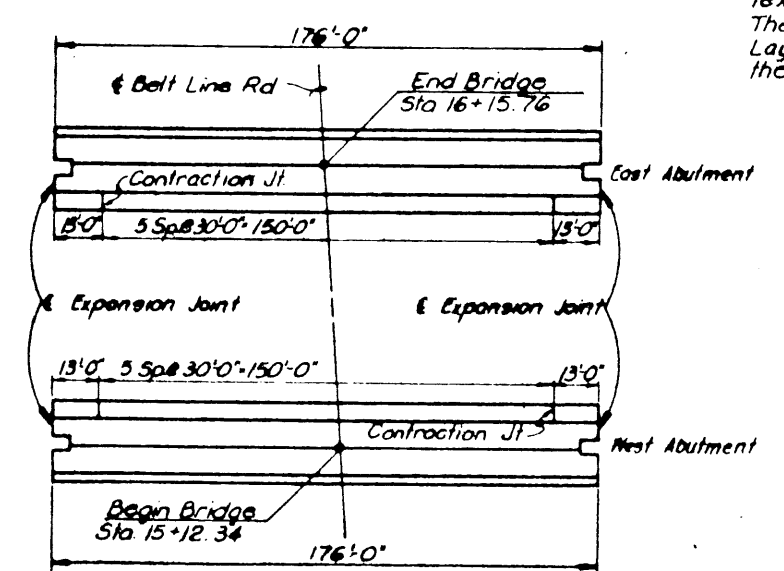
# For Contractors' Information only.  
\* Quantities For 1'-0" Height Fascia Wall Per Shaft Space



**FASCIA WALL END DETAIL**  
Scale: 1/2" = 1'-0"



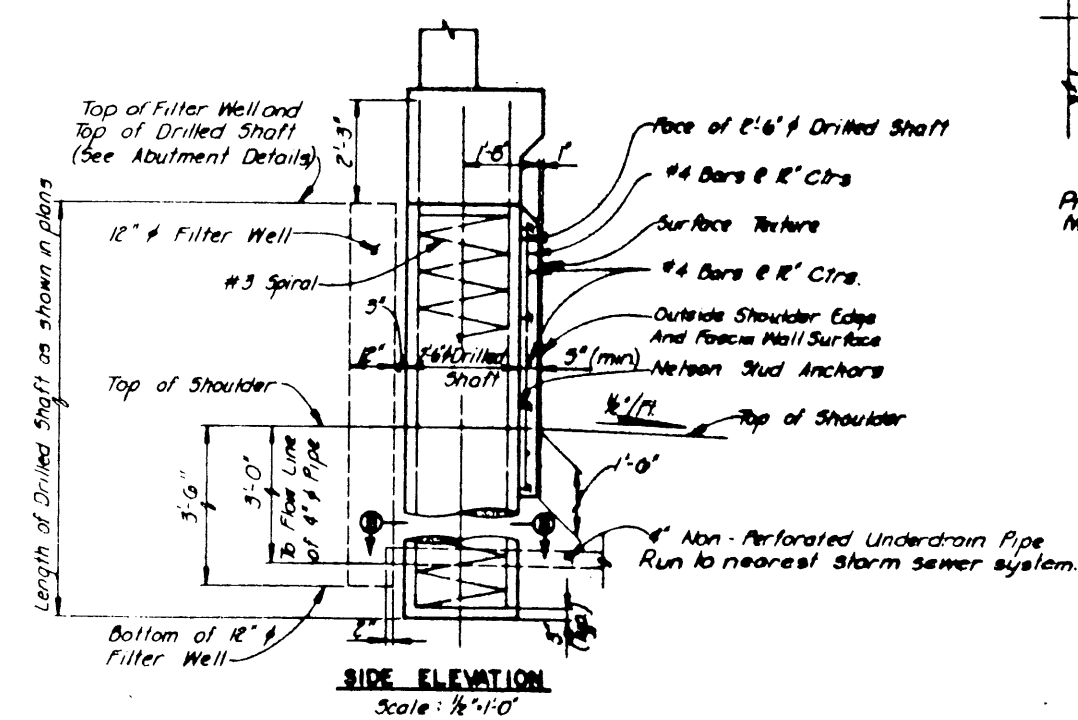
**SECTION B-B**  
Scale: 3/4" = 1'-0"



**PLAN**  
**FASCIA WALL PANELS**  
N.T.S.

**GENERAL NOTES:**

- All concrete for drilled shafts and concrete fascia walls shall be Class "C".
- All reinforcing steel shall be ASTM A615, Grade 60, except spiral bars.
- For details and dimensions of Surface Texture, see Standard Dwg No 41. The Contractor shall develop a Rustication Layout for each Abutment for approval by the Engineer.



**SIDE ELEVATION**  
Scale: 1/8" = 1'-0"

NO	REVISION	BY	DATE
TEXAS TURNPIKE AUTHORITY DALLAS NORTH TOLLWAY			
BELT LINE ROAD UNDERPASS DRILLED SHAFT AND FASCIA WALL DETAILS			
Turner Collier Braden Inc Consulting Engineers			SECTION VI
DATE	DATE	DATE	DATE
CONTRACT NO. DNT-114 SHEET S-35 OF S-82			