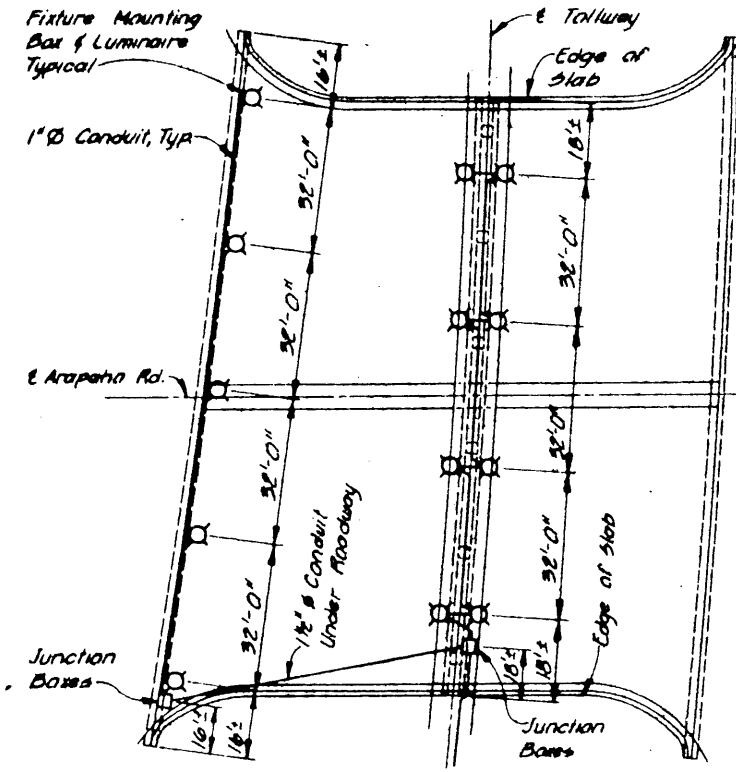


ITEM NO	DESCRIPTION	UNIT	QUANTITY
416	Drilled Shaft (30" Ø)	L.F.	2563
416	Drilled Shaft (42" Ø)	L.F.	47
421	Class "C" Concrete (Abutment)	C.Y.	132.6
421	Class "C" Concrete (Bent)	C.Y.	57.5
422	Reinforced Concrete Slab	S.F.	15279
423	Retaining Wall (Fosco Wall)	S.F.	5151
425	Prest. Conc. Beams (AASHTO Type II)	L.F.	1807.88
436	Preformed Joint Sealer (?)	L.F.	430
440	Reinforcing Steel	Lb.	29,788
442	Struct. Steel (H.Y.C.)	Lb.	5,502
442	Struct. Steel (H.Y.C.) (Armor Jt.)	Lb.	15,077
444	Bridge Protective Assembly	Ea.	2
450	Railing, Type C4	L.F.	222.2
556	Filter Material (Type D)	C.Y.	82
610	Conduit (Galvanized) (1")	L.F.	285
610	Conduit (Galvanized) (1 1/2")	L.F.	77
900	Filter Well (12" Ø)	L.F.	623



**UNDERBRIDGE LIGHTING PLAN**  
For Underbridge Lighting Conduit Details, See Standard Dwg. No. 36.

- General Notes**
1. All Station Designations Are & Arapaho Rd. Stations.
  2. For Top And Bottom Column Elevations, See Sheets S-42 and S-49.
  3. For Additional Drilled Shaft Layout Dimensions See Misc Slab Details, Sheet G of G.

NO	REVISION	BY	DATE
TEXAS TURNPIKE AUTHORITY DALLAS NORTH TOLLWAY			
ARAPAHO ROAD UNDERPASS FOUNDATION PLAN B ESTIMATED QUANTITY SUMMARY			
Turner Collier & Braden Inc. <small>Consulting Engineers</small>			SECTION VI
DESIGNED BY	BST	DATE	6-83
CHECKED BY	FRW	DATE	7-83
DRAWN BY		FRW	DATE 6-83
SCALE		AS NOTED	
CONTRACT NO. DNT-114 SHEET S-37 OF S-82			