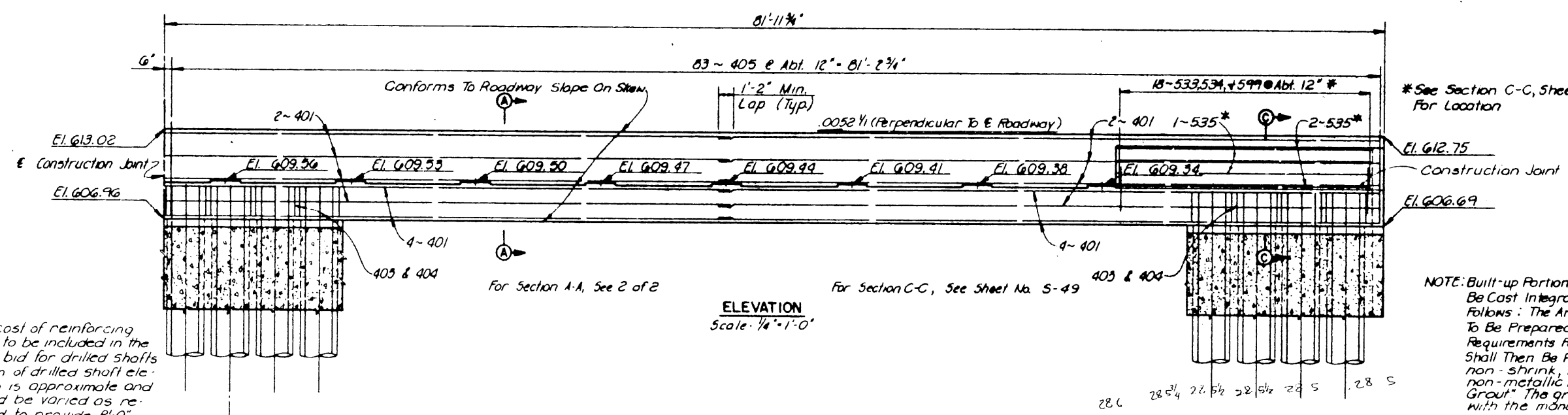


**PLAN**  
Scale: 1/4" = 1'-0"



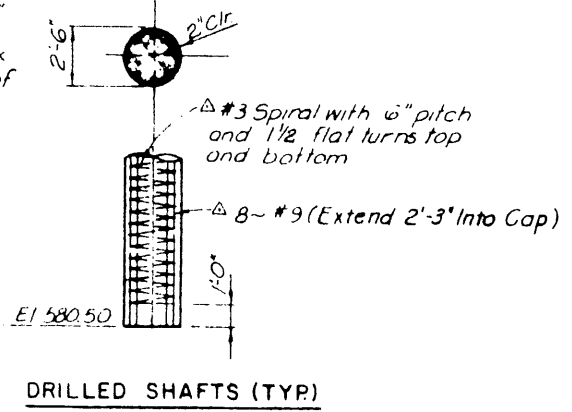
**ELEVATION**  
Scale: 1/4" = 1'-0"

\* See Section C-C, Sheet S-49, For Location

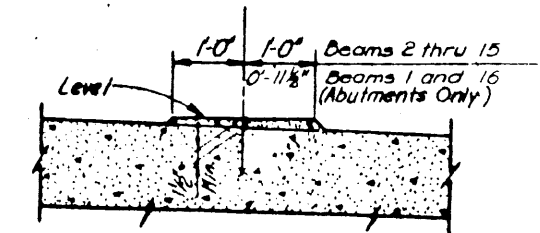
**NOTE:** Built-up Portions Of Bearing Seats Shall Be Cast Integrally With Cap Or Constructed As Follows: The Area Under The Built-up Portion Is To Be Prepared In Accordance With Specification Requirements For Construction Joints. The Pedestal Shall Then Be Placed Using an approved pre-packaged, non-shrink, impact resistant grout containing non-metallic fibers, similar to "Set" Impact Resistant Grout. The grout shall be mixed and applied in accordance with the manufacturer's recommendations.

**NOTES:**  
1. See West Abutment Details, 2 of 2 for Notes, Estimated Quantities and Details not shown.

**Note**  
The cost of reinforcing steel to be included in the price bid for drilled shafts. Bottom of drilled shaft elevation is approximate and should be varied as required to provide 8'-0" minimum penetration into unweathered rock measured from top of finished grade.



**DRILLED SHAFTS (TYP.)**



**BEARING SEAT DETAIL**  
Scale: 1/4" = 1'-0"

NO.	REVISION	BY	DATE
TEXAS TURNPIKE AUTHORITY DALLAS NORTH TOLLWAY			
ARAPAHO ROAD UNDERPASS WEST ABUTMENT DETAILS			
TurnerCollieBraden Inc. <small>(Consulting Engineers)</small>			SECTION VII
DESIGNED BY JRA	DATE 5-83	CHECKED BY FRW	DATE 5-83
DRAWN BY AS NOTED		DATE 6-83	
CONTRACT NO. DNT-114 SHEET S-38 OF S-82			