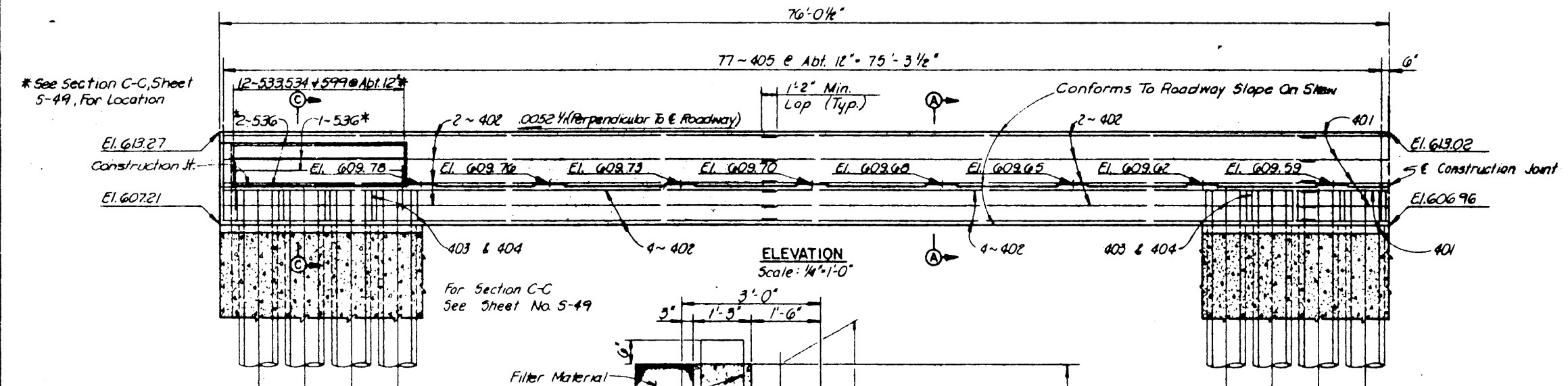
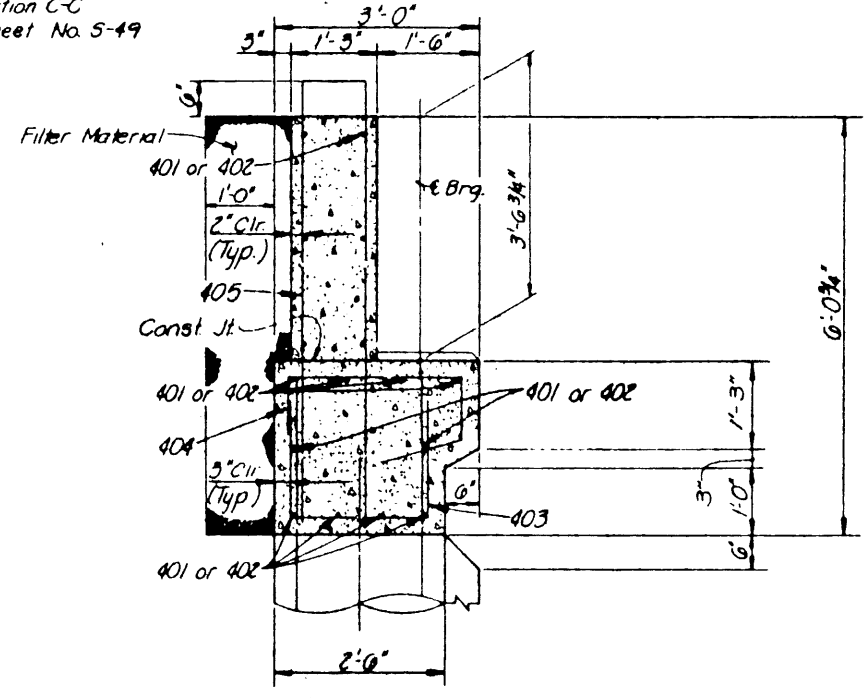


PLAN
Scale: 1/4"=1'-0"



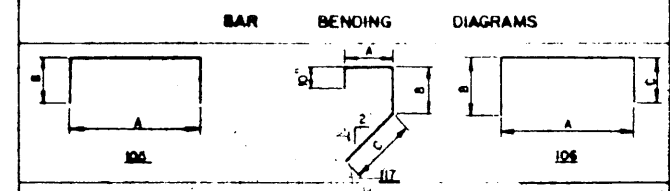
ELEVATION
Scale: 1/4"=1'-0"



SECTION A-A
Scale: 3/4"=1'-0"

- NOTES:**
1. All concrete shall be Class "C". Design $f_c = 1200$ p.s.i. Chamfer all exposed corners $3/4"$ unless otherwise noted.
 2. All reinf. steel shall be ASTM A-615, Grade 60.
 3. Dimensions relating to reinforcing steel are to outside dimension of bar, with radii shown to the inside of bar.
 4. For Drilled Shaft and Fascia Wall Details, See Sheet No. S-55.
 5. Elevations shown, other than the Bearing Seat Elevations, are given at front face of Abutment Backwall.
 6. For Under Bridge Lighting Conduit Details, See Standard Drawing No. 36 and Foundation Plan Drawing

MARK	REQD.	LENGTH	TYPE	DIMENSIONS				WEIGHT
				A	B	C	D or R	
401	32	44'-7"	Str.					953
402	32	30'-2"	Str.					773
403	156	5'-4"	105	2'-0"	1'-8"			556
404	156	5'-6"	117	2'-0"	0'-11"	1'-3"		573
405	160	13'-7"	105	0'-11"	6'-4"			1452
Total								4307
539	30	5'-5"	105	2'-5"	1'-6"			169
534	30	6'-4"	106	2'-5"	1'-6"	2'-5"		198
535	6	17'-0"	Str.					106
536	6	10'-9"	Str.					67
599	30	2'-6"	Str.					78
Total								618
Total								4925



ITEM NO.	DESCRIPTION	UNIT	QUANTITY
416	Drilled Shaft (30"φ)	L.F.	1375
421	Class "C" Concrete (Abutment)	C.Y.	66.3
423	Retaining Wall (Fascia Wall)	S.F.	2885
440	Reinforcing Steel	Lb.	4925
556	Filter Material (Type D)	C.Y.	41
900	Filter Wells (12"φ)	LF	344

NOTE:
Armor Joint at Abutment is included in the Slab Details Drawing, Item No 442 Quantity.

NO.	REVISION	BY	DATE
TEXAS TURNPIKE AUTHORITY DALLAS NORTH TOLLWAY			
ARAPAHO ROAD UNDERPASS WEST ABUTMENT DETAILS			
Turner Collier & Braden Inc. <small>(Consulting Engineers)</small>			SECTION VII
DESIGNED DRD	DATE 5-83	DESIGNED FRW	DATE 5-83
CHECKED JRA	DATE 6-83	SCALE AS NOTED	
CONTRACT NO. DNT-114 SHEET S-39 OF S-62			