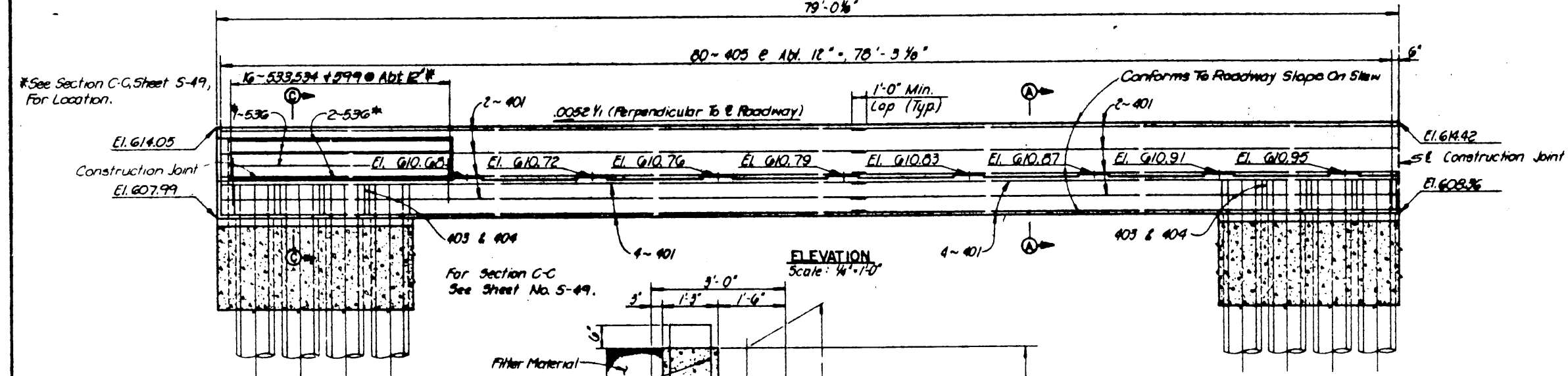
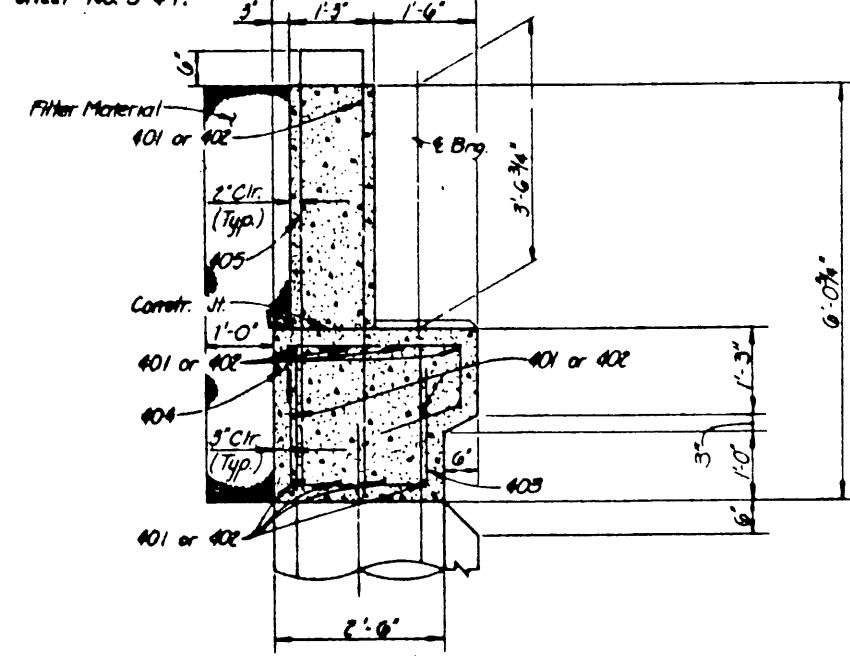


PLAN
Scale: 1/4" = 1'-0"



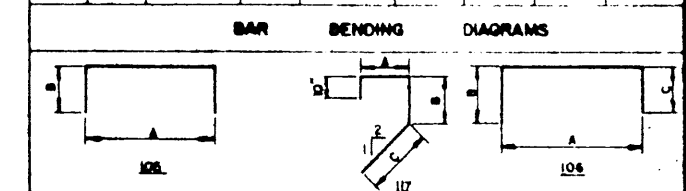
ELEVATION
Scale: 1/4" = 1'-0"



SECTION A-A
Scale: 1/4" = 1'-0"

- NOTES:**
- All concrete shall be Class "C" Design $f_c = 1800$ p.s.i. Chamfer all exposed corners $3/4"$ unless otherwise noted.
 - All reinf. steel shall be ASTM A-615, Grade 60.
 - Dimensions relating to reinforcing steel are to outside dimension of bar, with radii shown to the inside of bar.
 - For Drilled Shaft and Fascia Wall Details, See Sheet No. S-55.
 - Elevations shown, other than the Bearing Seat Elevations, are given at front face of Abutment Backwall.
 - For Under Bridge Lighting Conduit Details, see Standard Drawing No. 36 and Foundation plan drawing.

REINFORCEMENT		BAR		SCHEDULE		DIMENSIONS		WEIGHT
MARK	NO.	LENGTH	TYPE	A	B	C	D or R	
401	32	43'-2"	51r					923
402	32	57'-7"	51r					803
403	156	3'-4"	105	2'-0"	1'-8"			556
404	156	3'-6"	117	2'-0"	0'-11"	1'-3"		573
405	160	13'-7"	105	0'-11"	6'-4"			1452
Total								4307
533	31	5'-5"	105	2'-5"	1'-6"			175
534	31	6'-4"	106	2'-5"	1'-6"	2'-5"		205
535	6	14'-3"	51r					89
536	6	14'-5"	51r					90
599	31	2'-6"	51r					81
Total								640
Total								4947



ESTIMATED QUANTITY SUMMARY			
ITEM NO.	DESCRIPTION	UNIT	QUANTITY
416	Drilled Shaft (30" ϕ)	L.F.	1188
421	Class "C" Concrete (Abutment)	C.Y.	66.3
423	Retaining Wall (Fascia Wall)	S.F.	2266
440	Reinforcing Steel	Lb.	4947
556	Filter Material (Type D)	C.Y.	41
900	Filter Well (12" ϕ)	L.F.	279

NOTE:
Armor Joint at Abutment is included in the Slab Details Drawings, Item No. 442 Quantity.

NO.	REVISION	BY	DATE
TEXAS TURNPIKE AUTHORITY DALLAS NORTH TOLLWAY			
ARAPAHO ROAD UNDERPASS EAST ABUTMENT DETAILS			
Turner Collier & Braden Inc. Consulting Engineers			SECTION VII
DRAWN JRA	DATE 5-83	DESIGNED FRW	DATE 5-83
CHECKED JRA	DATE 6-83	SCALE AS NOTED	
CONTRACT NO. DNT-114 SHEET S-41 OF S-82			