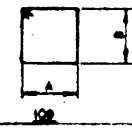


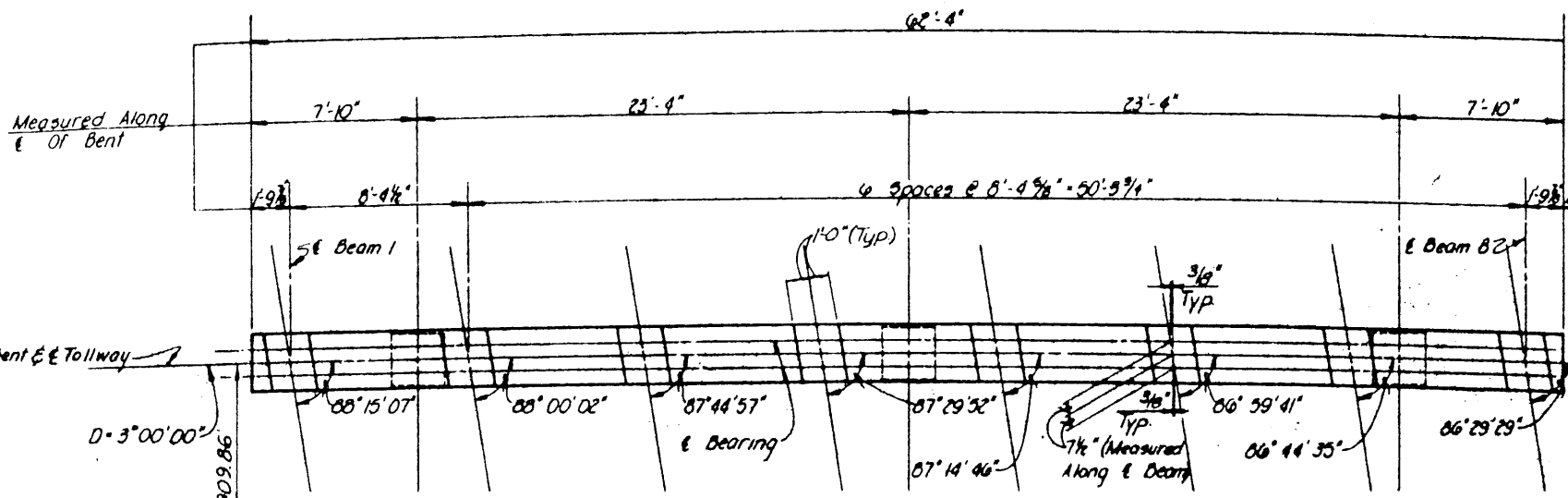
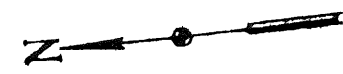
MARK	NO.	RECD.	LENGTH	TYPE	DIMENSIONS			WEIGHT
					A	B	C	
301	108		10'-6"	109	2'-5"	2'-5"	Total	1183
601	72		32'-0"	31r			Total	577
1101	7		28'-2"	31r				899
1102	7		37'-6"	31r				1767
1103	7		53'-6"	31r				1990
1104	8		11'-1"	51r				477
							Total	5127
1001	24		10'-9"	51r				1956
1002	24		8'-6"	51r				878
							Total	2814
401	51		9'-4"	109	2'-2"	2'-2"	Total	318
							Total	10,019

BAR BENDING DIAGRAMS



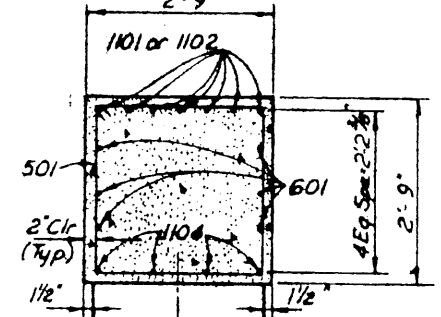
ESTIMATED QUANTITY SUMMARY

ITEM NO.	DESCRIPTION	UNIT	QUANTITY
416	Drilled Shaft (3'-6" #)	LF	29
421	Class C Concrete (Bent)	C.Y.	29.1
440	Reinforcing Steel	Lbs	10,019

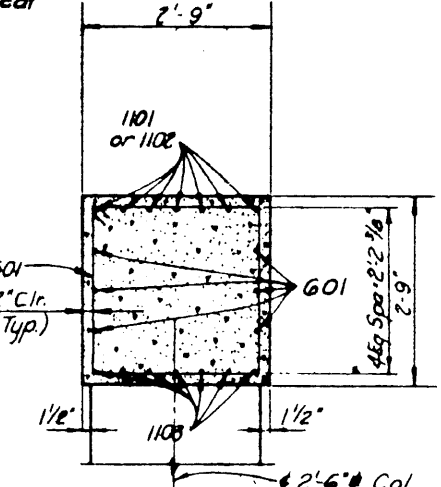


PLAN
Scale 1/4"=1'-0"

E Arapaho Road
Sta. 7+31.27
E Dallas North Tollway
Sta. 6+15.44

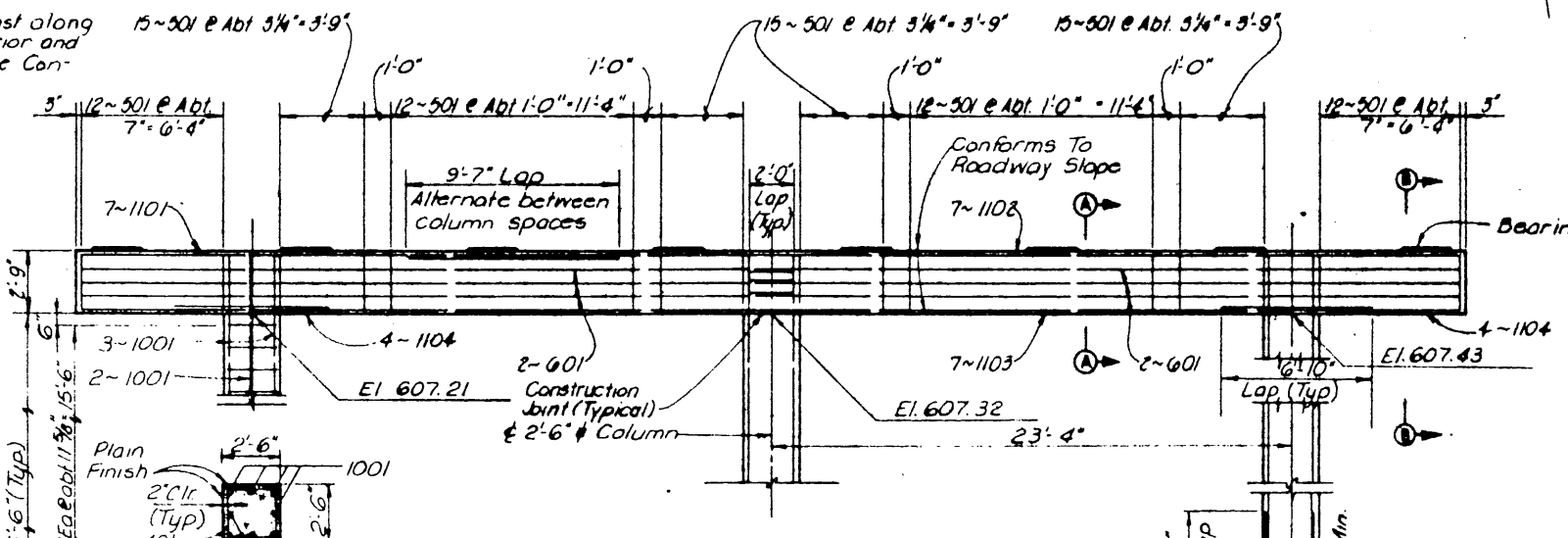


SECTION B-B
Scale: 3/4"=1'-0"



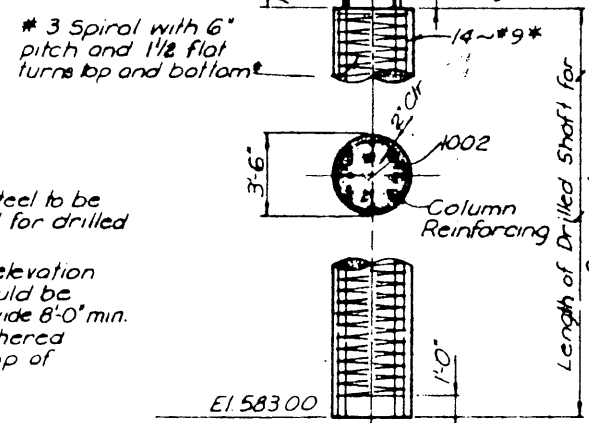
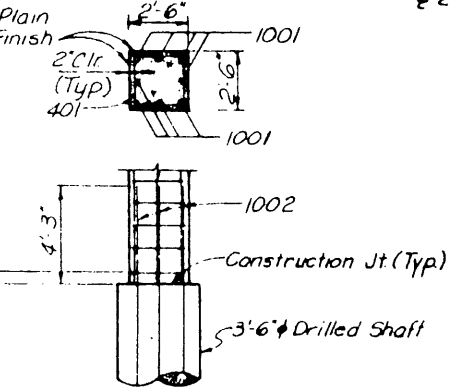
SECTION A-A
Scale: 3/4"=1'-0"

Note
Cap beam may be cast along chord between exterior and center columns at the Contractor's option.



ELEVATION
Scale 1/4"=1'-0"

COLUMN ELEVATION (TYP.)



DRILLED SHAFTS (TYP.)

* Note
The cost of reinforcing steel to be included in the price bid for drilled shafts
Bottom of drilled shaft elevation is approximate and should be varied as required to provide 8'-0" min. penetration into unweathered rock measured from top of finished grade

NOTES:

- All concrete shall be Class "C", $f_c = 3,600$ p.s.i. Chamfer all exposed corners $3/4"$ unless otherwise noted.
- All reinforcing steel shall be ASTM A615 Grade 60.
- Dimensions relating to reinforcing steel are to outside dimension of bar, with radii shown to the inside of bar.
- For details and dimensions of concrete Bearing Seat see Sheet No. S-40.
- Average calculated drilled shaft load = 170 Tons/Shaft
- For Under Bridge Lighting Conduit Details, See Standard Drawing No 36 and Foundation plan drawing.

LOCATION	BEARING SEAT ELEVATIONS								
	BEAM NUMBERS								
SPAN	BENT	1	2	3	4	5	6	7	8
1	North	610.06	610.10	610.14	610.18	610.22	610.26	610.30	610.33
2	North	610.08	610.12	610.16	610.20	610.23	610.27	610.31	610.35

NO. _____ REVISION _____ BY _____ DATE _____

TEXAS TURNPIKE AUTHORITY
DALLAS NORTH TOLLWAY
ARAPAHO ROAD UNDERPASS
BENT DETAIL - NORTH

TurnerCollie & Braden Inc.
Consulting Engineers

SECTION VI

DESIGNED: DRD DATE: 5-83 DRAWN: FRW DATE: 5-83
CHECKED: JRA DATE: 6-83 SCALE: AS NOTED

CONTRACT NO. DNT-114 SHEET S-42 OF S-82